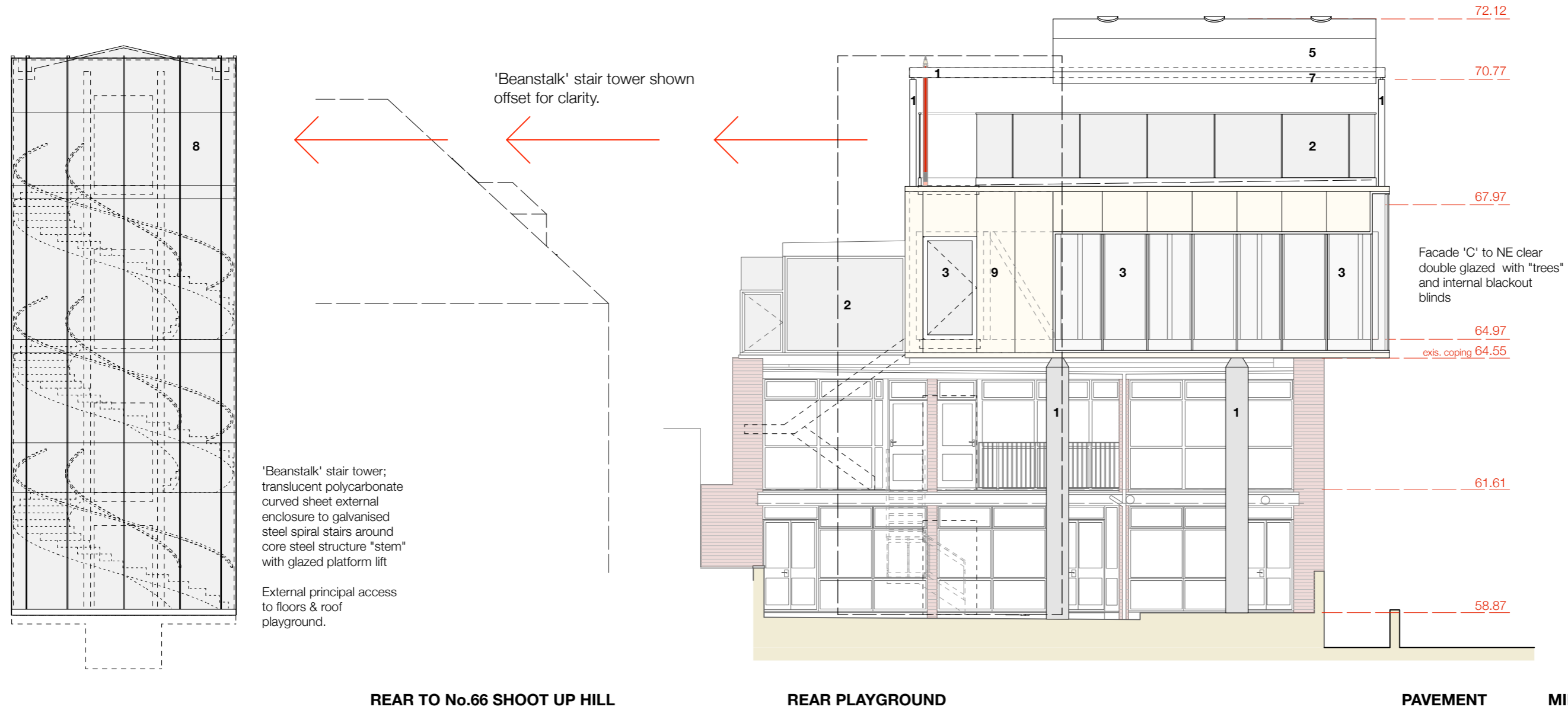


THIS DRAWING IS COPYRIGHT:
 DIMENSIONS SHOULD NOT BE SCALED FROM THE
 DRAWINGS FIGURED DIMENSIONS TO BE USED &
 CHECKED ON SITE PRIOR TO START OF ANY WORK

MATERIALS FOR EXTENSION:

- 1: White painted steel columns and beams
- 2: Translucent glass
- 3: Clear glass
- 5: Grey membrane roof with glass lenses
- 7: White PPC aluminium
- 8: Translucent polycarbonate sheets
- 9: Honey coloured anodised aluminium panels and dressings
- 10: Honey coloured anodised aluminium glazing/cladding frames



'Beanstalk' stair tower;
 translucent polycarbonate
 curved sheet external
 enclosure to galvanised
 steel spiral stairs around
 core steel structure "stem"
 with glazed platform lift

External principal access
 to floors & roof
 playground.

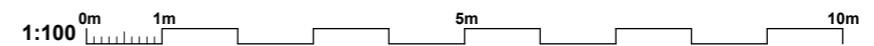
'Beanstalk' stair tower shown
 offset for clarity.

Facade 'C' to NE clear
 double glazed with "trees"
 and internal blackout
 blinds

| REVISIONS | Date | Ini |
|--|---------|-------|
| A | 13-8-15 | AB/NB |
| Column locations; glazing; centerline dimensions; update existing school elevation; roof structure | | |
| B | 24-8-15 | AB/NB |
| Roof canopy structure; beanstalk stair; graphics; notes for PA | | |
| C | 27-8-15 | AB/NB |
| Notes; updates steel from SE info | | |
| D | 2-9-15 | AB/NB |
| Update truss from SE info; SVP 'Pencil' to roof; graphics | | |

Elevation C : Proposed : View from the rear playground

Scale 1:100



Job: Mulberry - Proposed Alterations
Client: The Mulberry House School
Title: Elevation C : Proposed
Scale: 1:100 @ A3
Drawing No: MUL-AL(0)18
Rev: D
Drawn by: NB/AB
Date: 2/9/2015