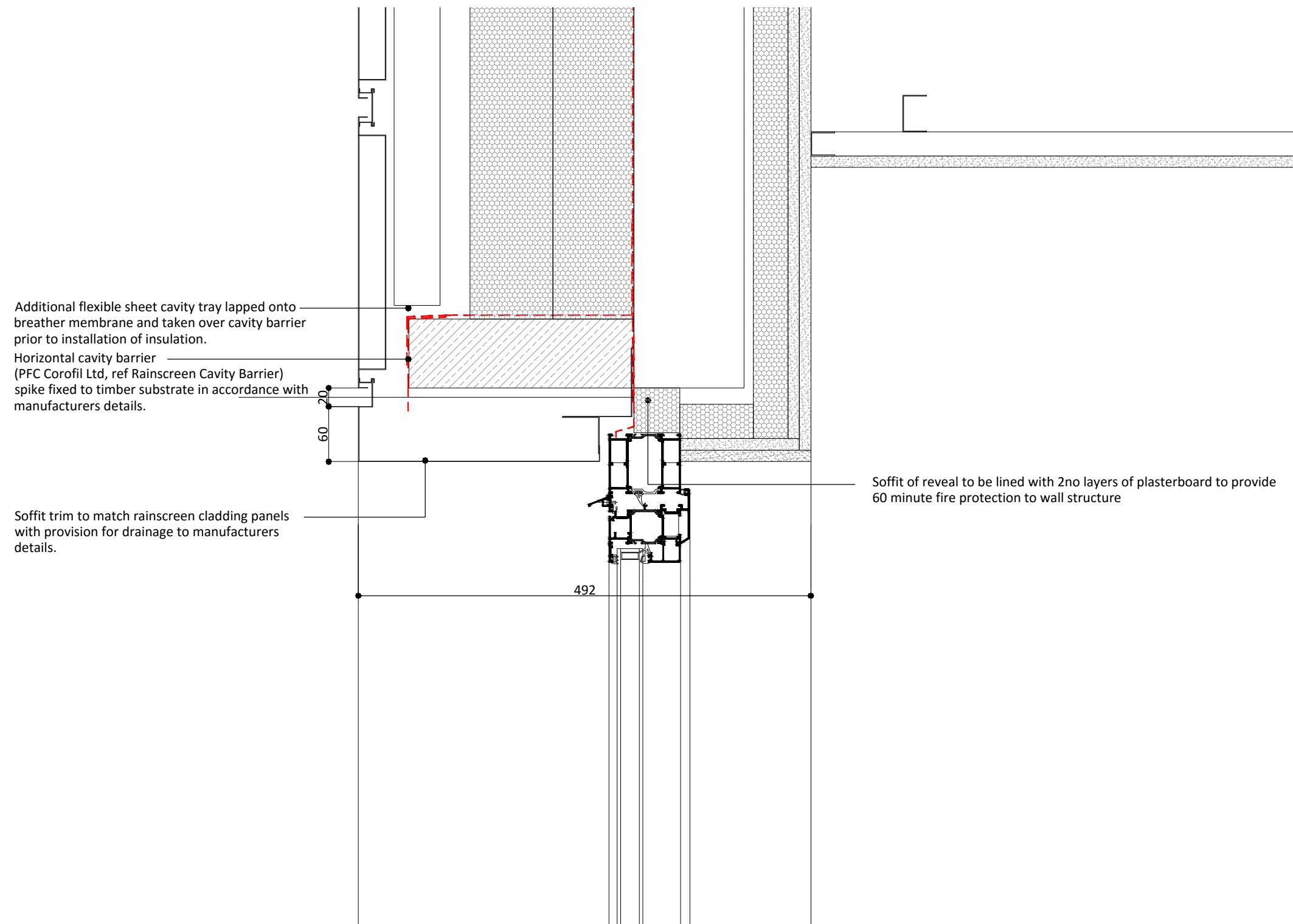


XREF'S IN THIS DRAWING

Note;
 For details of concrete works, refer to Evolve Engineers Drawings.
 For details of the CLT Structure, refer to Eurban Drawings.



Additional flexible sheet cavity tray lapped onto breather membrane and taken over cavity barrier prior to installation of insulation.
 Horizontal cavity barrier (PFC Corofil Ltd, ref Rainscreen Cavity Barrier) spike fixed to timber substrate in accordance with manufacturers details.

Soffit trim to match rainscreen cladding panels with provision for drainage to manufacturers details.

Soffit of reveal to be lined with 2no layers of plasterboard to provide 60 minute fire protection to wall structure

No.	Date	Description	Drwn/Chkd By
CLIENT			

Sussex House Developments

PROJECT
 264-270 Finchley Road

TITLE
 Head Detail
 Windows within Rainscreen Cladding

DRAWING STATUS

For Comment

DRAWN	DRJ	CHECKED	AM
-------	-----	---------	----

SCALE 1:5 @ A3

DATE Jun 2016

WCEC architects
 Chesterfield 01246 260261 | London 020 3388 0019 | Livingston 08700 555915
 email@wcec.co.uk | www.wcec.co.uk

JOB NO.	DRAWING NO.	REV
15-470	A-(21)-2014	