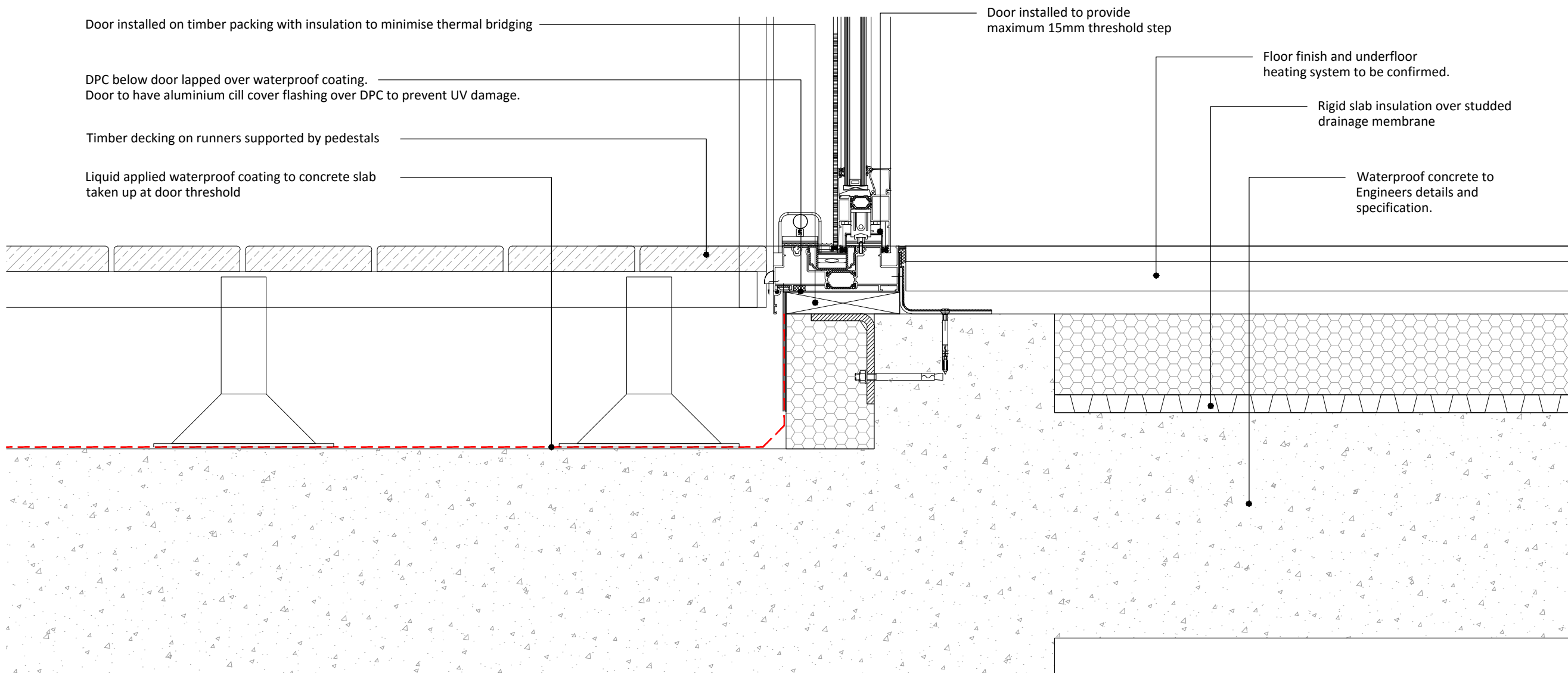


XREF'S IN THIS DRAWING

Note;  
 For details of concrete works, refer to Evolve Engineers Drawings.  
 For details of the CLT Structure, refer to Urban Drawings.



Door installed on timber packing with insulation to minimise thermal bridging

Door installed to provide maximum 15mm threshold step

DPC below door lapped over waterproof coating.  
 Door to have aluminium cill cover flashing over DPC to prevent UV damage.

Floor finish and underfloor heating system to be confirmed.

Timber decking on runners supported by pedestals

Rigid slab insulation over studded drainage membrane

Liquid applied waterproof coating to concrete slab taken up at door threshold

Waterproof concrete to Engineers details and specification.

No.	Date	Description	Drwn/Chkd By
			CLIENT

Sussex House Developments

PROJECT  
 264-270 Finchley Road

TITLE  
 Threshold Detail  
 Lower Ground Floor  
 Sliding Doors

DRAWING STATUS  
 For Comment

DRAWN	DRJ	CHECKED	AM
-------	-----	---------	----

SCALE  
 1:5 @ A3

DATE  
 Jun 2016

**WCEC architects**  
 Chesterfield 01246 260261 London 020 3388 0019 Livingston 08700 555915  
 email@wcec.co.uk www.wcec.co.uk

JOB NO.	DRAWING NO.	REV
15-470	A-(21)-2012	