

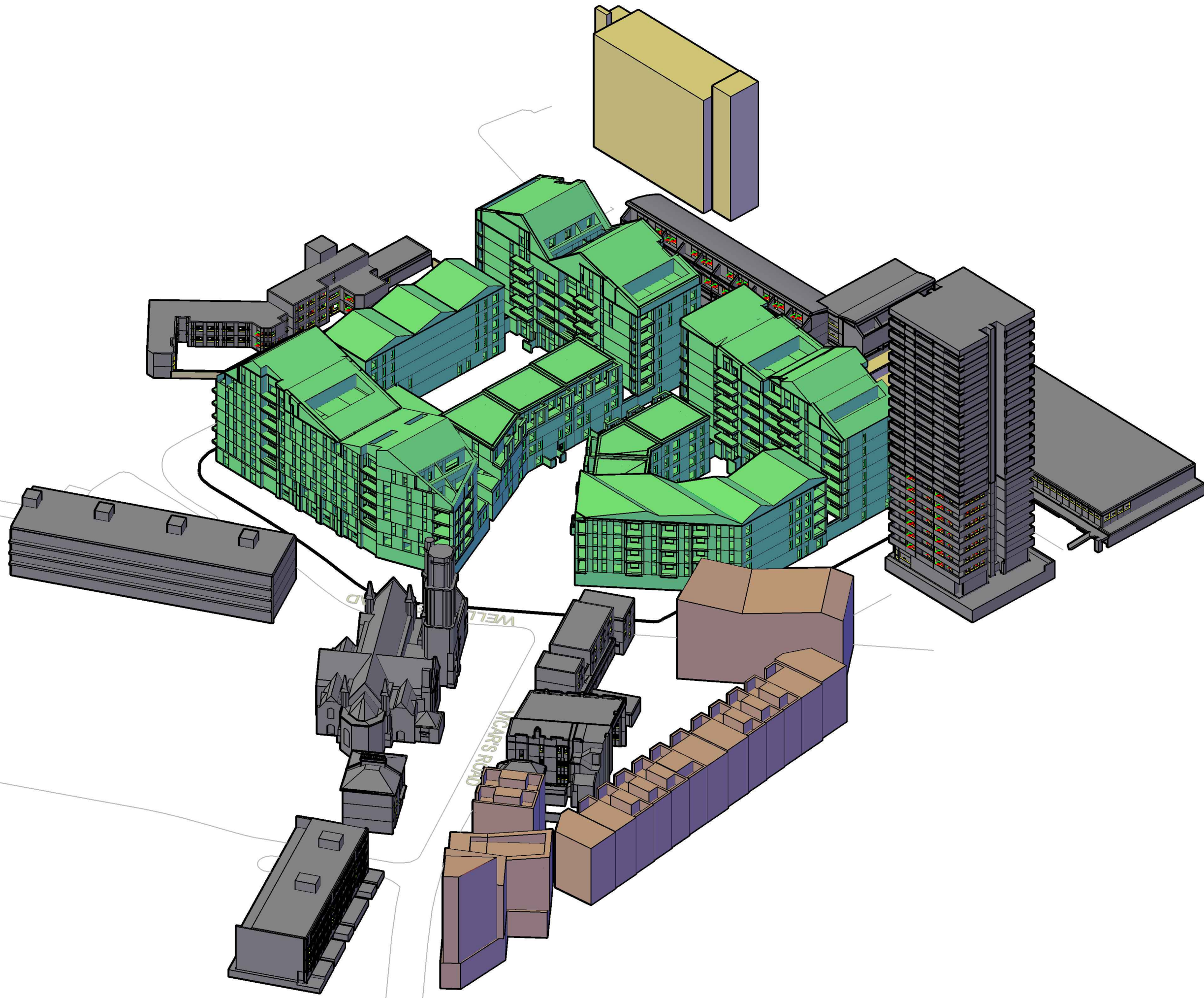


Appendix 1

Daylight and Sunlight
to Neighbouring
Properties.

Drawings BRE131 to
141 plus associated
Tables

'With Trees' BRE142 to
152 plus associated
Tables



Sources of Information

Existing And Surrounding Buildings

MBS Survey Software Ltd 3d Survey sent 15 Sept 2012

Proposed Scheme

Karakusevic Carson Architects LLP 3d Model

Sent on 14 SEPT 2016:

- | | |
|--------------------|--------------------|
| 307-A-D-100-00.dwg | 307-A-D-200-01.dwg |
| 307-A-D-100-01.dwg | 307-A-D-200-02.dwg |
| 307-A-D-100-02.dwg | 307-A-D-200-03.dwg |
| 307-A-D-100-03.dwg | 307-A-D-200-04.dwg |
| 307-A-D-100-04.dwg | 307-A-D-200-05.dwg |
| 307-A-D-100-05.dwg | 307-A-D-200-06.dwg |
| 307-A-D-100-06.dwg | |
| 307-A-D-100-07.dwg | |
| 307-A-D-100-08.dwg | |
| 307-A-D-300-01.dwg | |
| 307-A-D-300-02.dwg | |
| 307-A-D-300-03.dwg | |
| 307-A-D-300-04.dwg | |
| 307-A-D-300-05.dwg | |
| 307-A-D-300-06.dwg | |

Sent on 20 SEPT 2016:

- 307_DAS_GA_Site Plan.pdf
- 307_Levels_KCA markup_rev 01.PDF
- 307_Levels_KCA markup_rev 02.pdf

Sent on 20 SEPT 2016:

- 550355Aug16_Data_Tables.xlsx
- 550355nfAug16V1_TCP.dwg



08449 02 03 04
GVA Schatunowski Brooks
10 Stratton Street, London, W1J 8JR
www.gva.co.uk

Project Name

Bacton Low Rise
Gospel Oak

Client

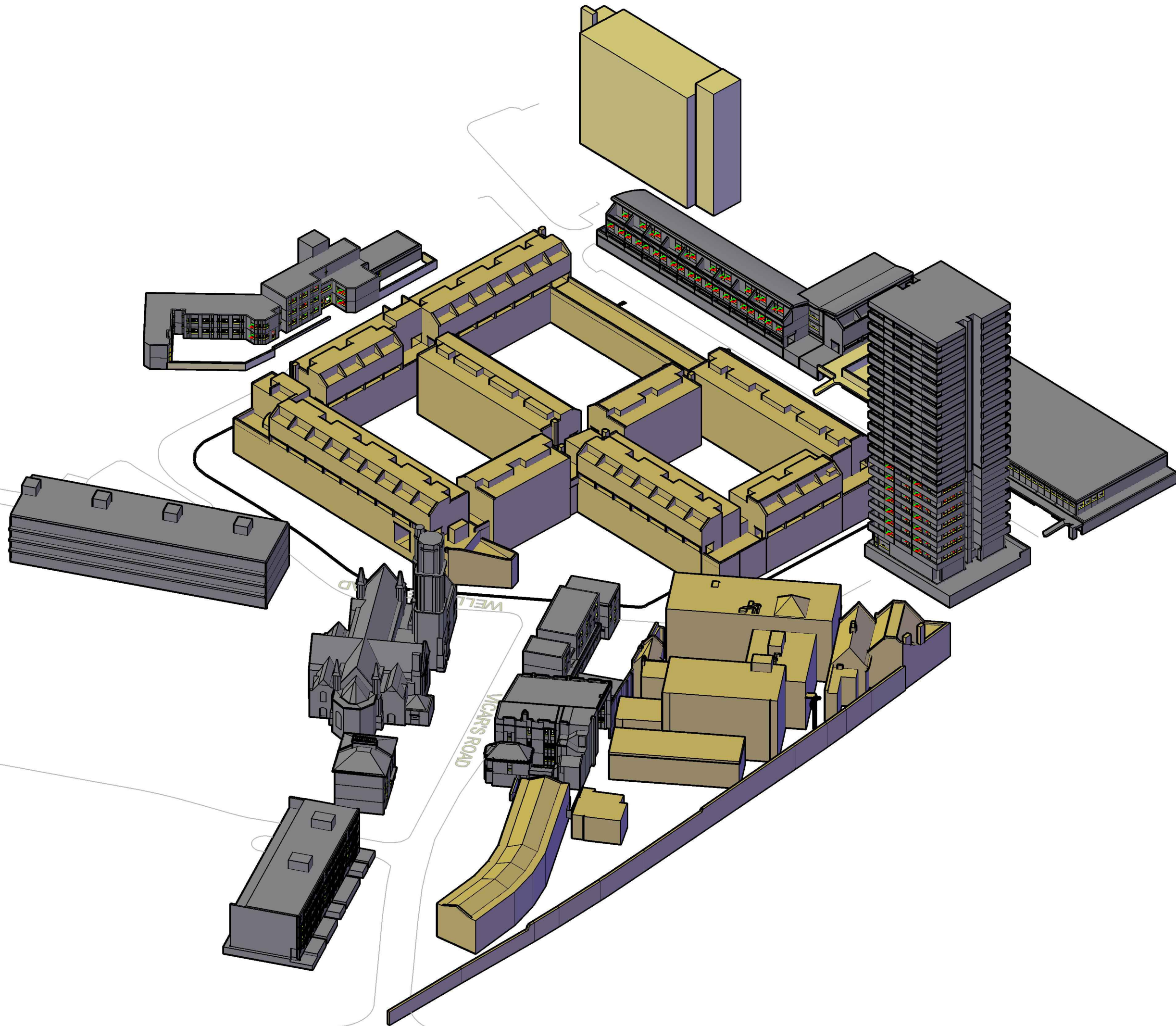
LONDON BOROUGH OF CAMDEN

Drawing Title

Proposed 3d View

Drawn By RT	Chk'd By -	Scale @ A3 1/750	Date 23 SEPT 2016
----------------	---------------	---------------------	----------------------

Project No. BA81 - 30	Drawing No. BRE 138	Revision -
--------------------------	------------------------	---------------



Sources of Information

Existing And Surrounding Buildings

MBS Survey Software Ltd 3d Survey sent 15 Sept 2012

Proposed Scheme

Karakusevic Carson Architects LLP 3d Model

Sent on 14 SEPT 2016:

- | | |
|--------------------|--------------------|
| 307-A-D-100-00.dwg | 307-A-D-200-01.dwg |
| 307-A-D-100-01.dwg | 307-A-D-200-02.dwg |
| 307-A-D-100-02.dwg | 307-A-D-200-03.dwg |
| 307-A-D-100-03.dwg | 307-A-D-200-04.dwg |
| 307-A-D-100-04.dwg | 307-A-D-200-05.dwg |
| 307-A-D-100-05.dwg | 307-A-D-200-06.dwg |
| 307-A-D-100-06.dwg | |
| 307-A-D-100-07.dwg | |
| 307-A-D-100-08.dwg | |
| 307-A-D-300-01.dwg | |
| 307-A-D-300-02.dwg | |
| 307-A-D-300-03.dwg | |
| 307-A-D-300-04.dwg | |
| 307-A-D-300-05.dwg | |
| 307-A-D-300-06.dwg | |

Sent on 20 SEPT 2016:

- 307_DAS_GA_Site Plan.pdf
- 307_Levels_KCA markup_rev 01.PDF
- 307_Levels_KCA markup_rev 02.pdf

Sent on 20 SEPT 2016:

- 550355Aug16_Data_Tables.xlsx
- 550355nfAug16V1_TCP.dwg



08449 02 03 04
GVA Schatunowski Brooks
10 Stratton Street, London, W1J 8JR
www.gva.co.uk

Project Name

Bacton Low Rise
Gospel Oak

Client

LONDON BOROUGH OF CAMDEN

Drawing Title

Existing 3d View

Drawn By RT	Chk'd By -	Scale @ A3 1/750	Date 23 SEPT 2016
----------------	---------------	---------------------	----------------------

Project No. BA81 - 30	Drawing No. BRE 139	Revision -
--------------------------	------------------------	---------------

Sources of Information

Existing And Surrounding Buildings

MBS Survey Software Ltd 3d Survey sent 15 Sept 2012

Proposed Scheme

Karakusevic Carson Architects LLP 3d Model

Sent on 14 SEPT 2016:

- | | |
|--------------------|--------------------|
| 307-A-D-100-00.dwg | 307-A-D-200-01.dwg |
| 307-A-D-100-01.dwg | 307-A-D-200-02.dwg |
| 307-A-D-100-02.dwg | 307-A-D-200-03.dwg |
| 307-A-D-100-03.dwg | 307-A-D-200-04.dwg |
| 307-A-D-100-04.dwg | 307-A-D-200-05.dwg |
| 307-A-D-100-05.dwg | 307-A-D-200-06.dwg |
| 307-A-D-100-06.dwg | |
| 307-A-D-100-07.dwg | |
| 307-A-D-100-08.dwg | |
| 307-A-D-300-01.dwg | |
| 307-A-D-300-02.dwg | |
| 307-A-D-300-03.dwg | |
| 307-A-D-300-04.dwg | |
| 307-A-D-300-05.dwg | |
| 307-A-D-300-06.dwg | |

Sent on 20 SEPT 2016:

- 307_DAS_GA_Site Plan.pdf
- 307_Levels_KCA markup_rev 01.PDF
- 307_Levels_KCA markup_rev 02.pdf

Sent on 20 SEPT 2016:

- 550355Aug16_Data_Tables.xlsx
- 550355nfAug16V1_TCP.dwg



08449 02 03 04
GVA Schatunowski Brooks
10 Stratton Street, London, W1J 8JR
www.gva.co.uk

Project Name

Bacton Low Rise
Gospel Oak

Client

LONDON BOROUGH OF CAMDEN

Drawing Title

Existing plan view

Drawn By

RT

Chk'd By

-

Scale @ A3

1/750

Date

23 SEPT 2016

Project No.

BA81 - 30

Drawing No.

BRE 140

Revision

-

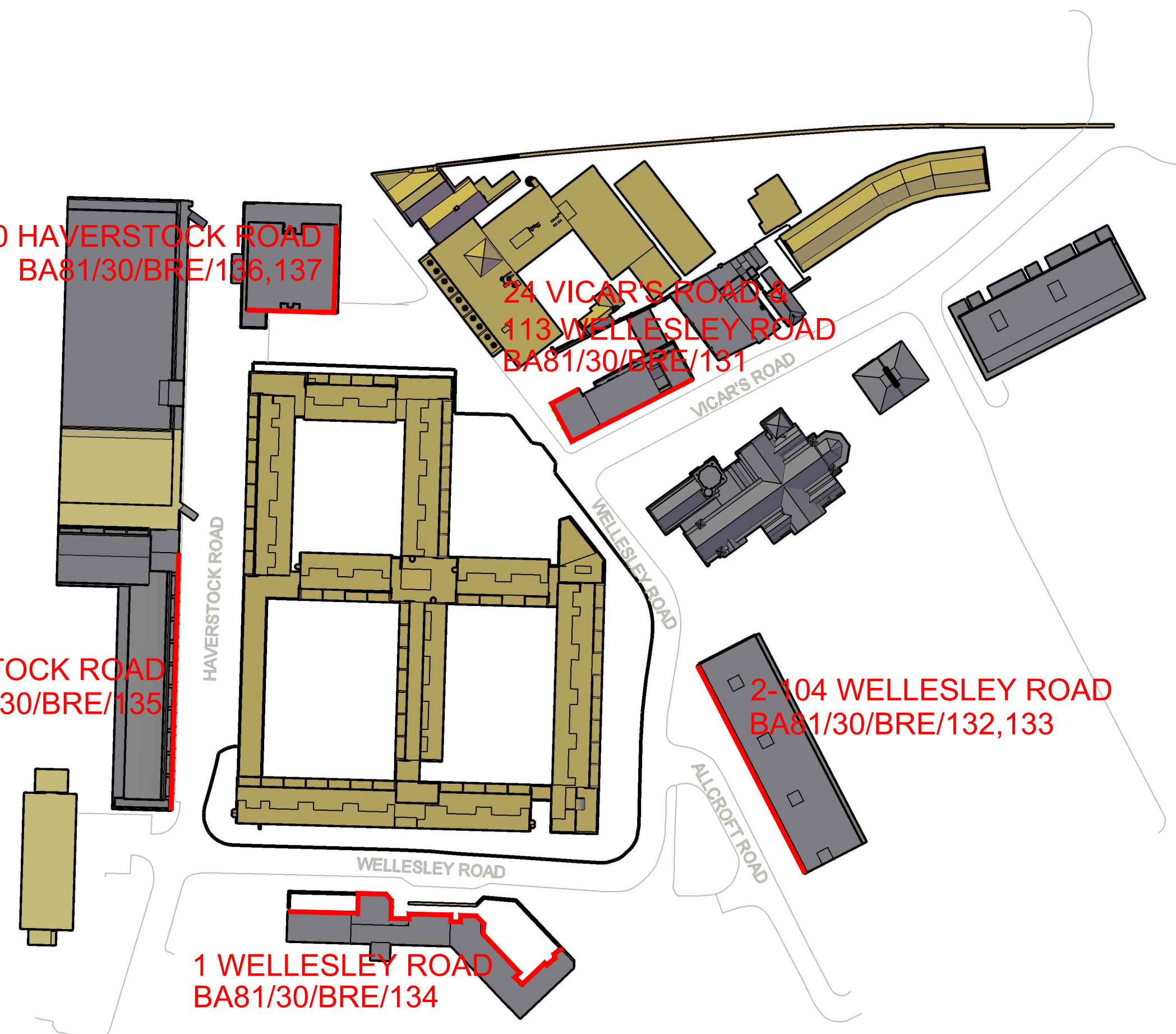
1-120 HAVERSTOCK ROAD
BA81/30/BRE/136,137

24 VICAR'S ROAD &
113 WELLESLEY ROAD
BA81/30/BRE/131

58-74 HAVERSTOCK ROAD
BA81/30/BRE/135

2-104 WELLESLEY ROAD
BA81/30/BRE/132,133

1 WELLESLEY ROAD
BA81/30/BRE/134



Sources of Information

Existing And Surrounding Buildings

MBS Survey Software Ltd 3d Survey sent 15 Sept 2012

Proposed Scheme

Karakusevic Carson Architects LLP 3d Model

Sent on 14 SEPT 2016:

- | | |
|--------------------|--------------------|
| 307-A-D-100-00.dwg | 307-A-D-200-01.dwg |
| 307-A-D-100-01.dwg | 307-A-D-200-02.dwg |
| 307-A-D-100-02.dwg | 307-A-D-200-03.dwg |
| 307-A-D-100-03.dwg | 307-A-D-200-04.dwg |
| 307-A-D-100-04.dwg | 307-A-D-200-05.dwg |
| 307-A-D-100-05.dwg | 307-A-D-200-06.dwg |
| 307-A-D-100-06.dwg | |
| 307-A-D-100-07.dwg | |
| 307-A-D-100-08.dwg | |
| 307-A-D-300-01.dwg | |
| 307-A-D-300-02.dwg | |
| 307-A-D-300-03.dwg | |
| 307-A-D-300-04.dwg | |
| 307-A-D-300-05.dwg | |
| 307-A-D-300-06.dwg | |

Sent on 20 SEPT 2016:

- 307_DAS_GA_Site Plan.pdf
- 307_Levels_KCA markup_rev 01.PDF
- 307_Levels_KCA markup_rev 02.pdf

Sent on 20 SEPT 2016:

- 550355Aug16_Data_Tables.xlsx
- 550355nfAug16V1_TCP.dwg



08449 02 03 04
GVA Schatunowski Brooks
10 Stratton Street, London, W1J 8JR
www.gva.co.uk

Project Name

Bacton Low Rise
Gospel Oak

Client

LONDON BOROUGH OF CAMDEN

Drawing Title

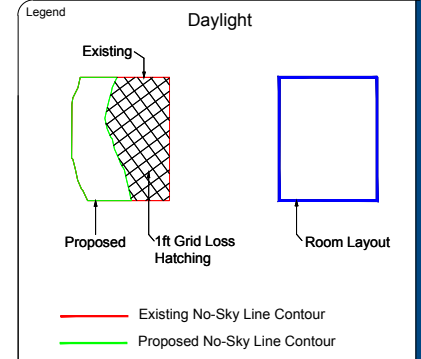
Proposed plan view

Drawn By RT	Chk'd By -	Scale @ A3 1/750	Date 23 SEPT 2016
----------------	---------------	---------------------	----------------------

Project No. BA81 - 30	Drawing No. BRE 141	Revision -
--------------------------	------------------------	---------------



Do not scale this drawing. All dimensions to be checked on site. Drawing to be read in conjunction with any specifications, schedules and Consultants drawings and details.



Sources of Information

Existing And Surrounding Buildings

MBS Survey Software Ltd 3d Survey sent 15 Sept 2012

Proposed Scheme

Karakusevic Carson Architects LLP 3d Model

Sent on 14 SEPT 2016:

- 307-A-D-100-00.dwg
- 307-A-D-100-01.dwg
- 307-A-D-100-02.dwg
- 307-A-D-100-03.dwg
- 307-A-D-100-04.dwg
- 307-A-D-100-05.dwg
- 307-A-D-100-06.dwg
- 307-A-D-100-07.dwg
- 307-A-D-100-08.dwg
- 307-A-D-300-01.dwg
- 307-A-D-300-02.dwg
- 307-A-D-300-03.dwg
- 307-A-D-300-04.dwg
- 307-A-D-300-05.dwg
- 307-A-D-300-06.dwg
- 307-A-D-200-01.dwg
- 307-A-D-200-02.dwg
- 307-A-D-200-03.dwg
- 307-A-D-200-04.dwg
- 307-A-D-200-05.dwg
- 307-A-D-200-06.dwg

Sent on 20 SEPT 2016:

- 307_DAS_GA_Site Plan.pdf
- 307_Levels_KCA markup_rev 01.PDF
- 307_Levels_KCA markup_rev 02.pdf

Sent on 20 SEPT 2016:

- 550355Aug16_Data_Tables.xlsx
- 550355nfAug16V1_TCP.dwg



08449 02 03 04
GVA Schatunowski Brooks
10 Stratton Street, London, W1J 8JR
www.gva.co.uk

Project Name

Bacton Low Rise
Gospel Oak

Client

LONDON BOROUGH OF CAMDEN

Drawing Title

No-Skyline Contours For
113 Wellesley Road & 24 Vicar's Road

Drawn By

RT

Chk'd By

-

Scale @ A3

1/200

Date

23 SEPT 2016

Project No.

BA81 - 30

Drawing No.

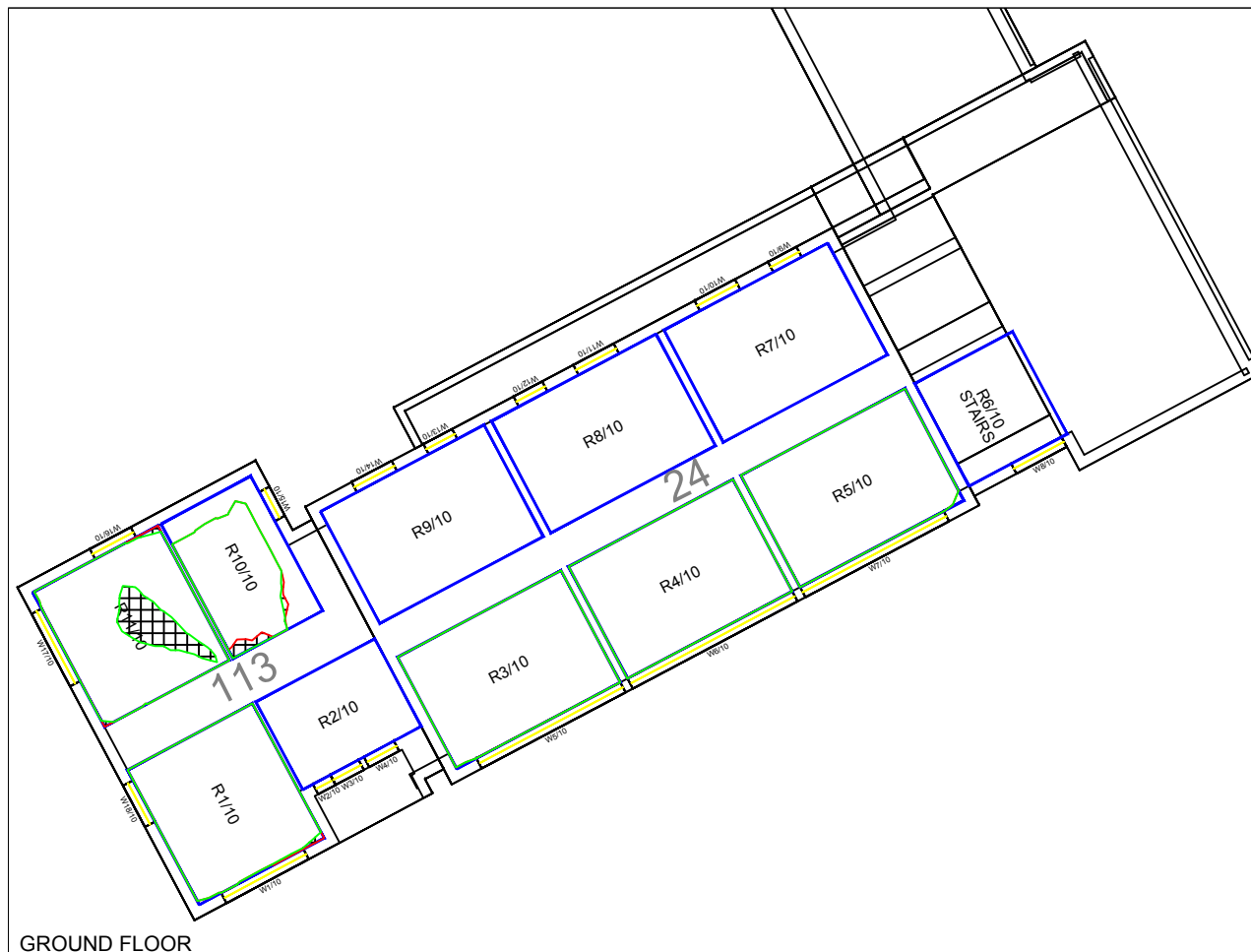
BRE 131

Revision

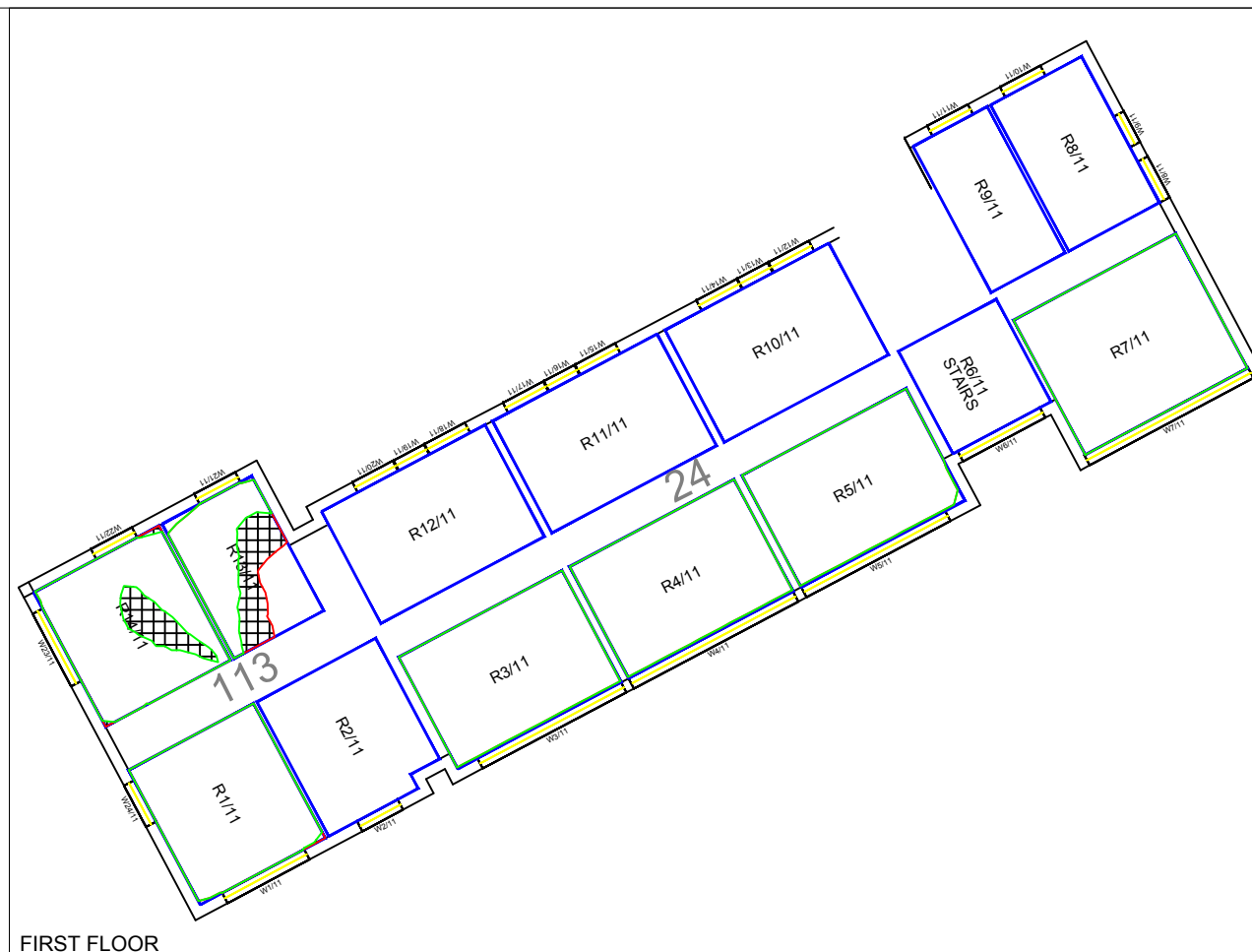
-

DAYLIGHT

A3



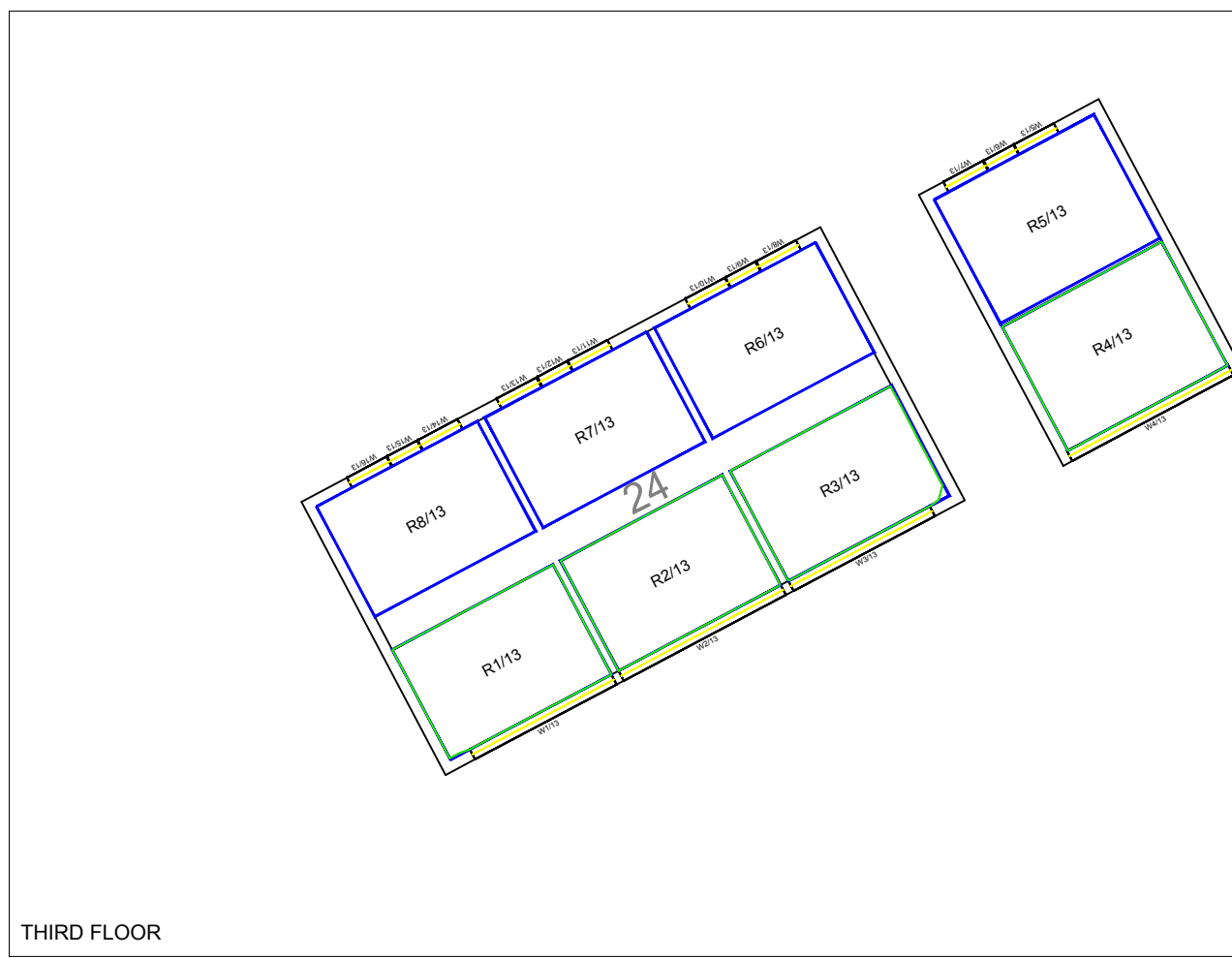
GROUND FLOOR



FIRST FLOOR

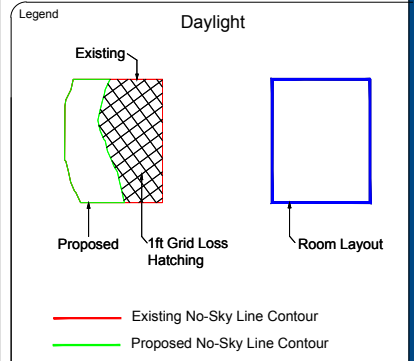


SECOND FLOOR



THIRD FLOOR

Do not scale this drawing. All dimensions to be checked on site. Drawing to be read in conjunction with any specifications, schedules and Consultants drawings and details.



Sources of Information

Existing And Surrounding Buildings

MBS Survey Software Ltd 3d Survey sent 15 Sept 2012

Proposed Scheme

Karakusevic Carson Architects LLP 3d Model

Sent on 14 SEPT 2016:

- 307-A-D-100-00.dwg
- 307-A-D-100-01.dwg
- 307-A-D-100-02.dwg
- 307-A-D-100-03.dwg
- 307-A-D-100-04.dwg
- 307-A-D-100-05.dwg
- 307-A-D-100-06.dwg
- 307-A-D-100-07.dwg
- 307-A-D-100-08.dwg
- 307-A-D-300-01.dwg
- 307-A-D-300-02.dwg
- 307-A-D-300-03.dwg
- 307-A-D-300-04.dwg
- 307-A-D-300-05.dwg
- 307-A-D-300-06.dwg
- 307-A-D-200-01.dwg
- 307-A-D-200-02.dwg
- 307-A-D-200-03.dwg
- 307-A-D-200-04.dwg
- 307-A-D-200-05.dwg
- 307-A-D-200-06.dwg

Sent on 20 SEPT 2016:

- 307_DAS_GA_Site Plan.pdf
- 307_Levels_KCA markup_rev 01.PDF
- 307_Levels_KCA markup_rev 02.pdf

Sent on 20 SEPT 2016:

- 550355Aug16_Data_Tables.xlsx
- 550355nAug16V1_TCP.dwg



08449 02 03 04
GVA Schatunowski Brooks
10 Stratton Street, London, W1J 8JR
www.gva.co.uk

Project Name

DAYLIGHT
Gospel Oak

Client

LONDON BOROUGH OF CAMDEN

Drawing Title

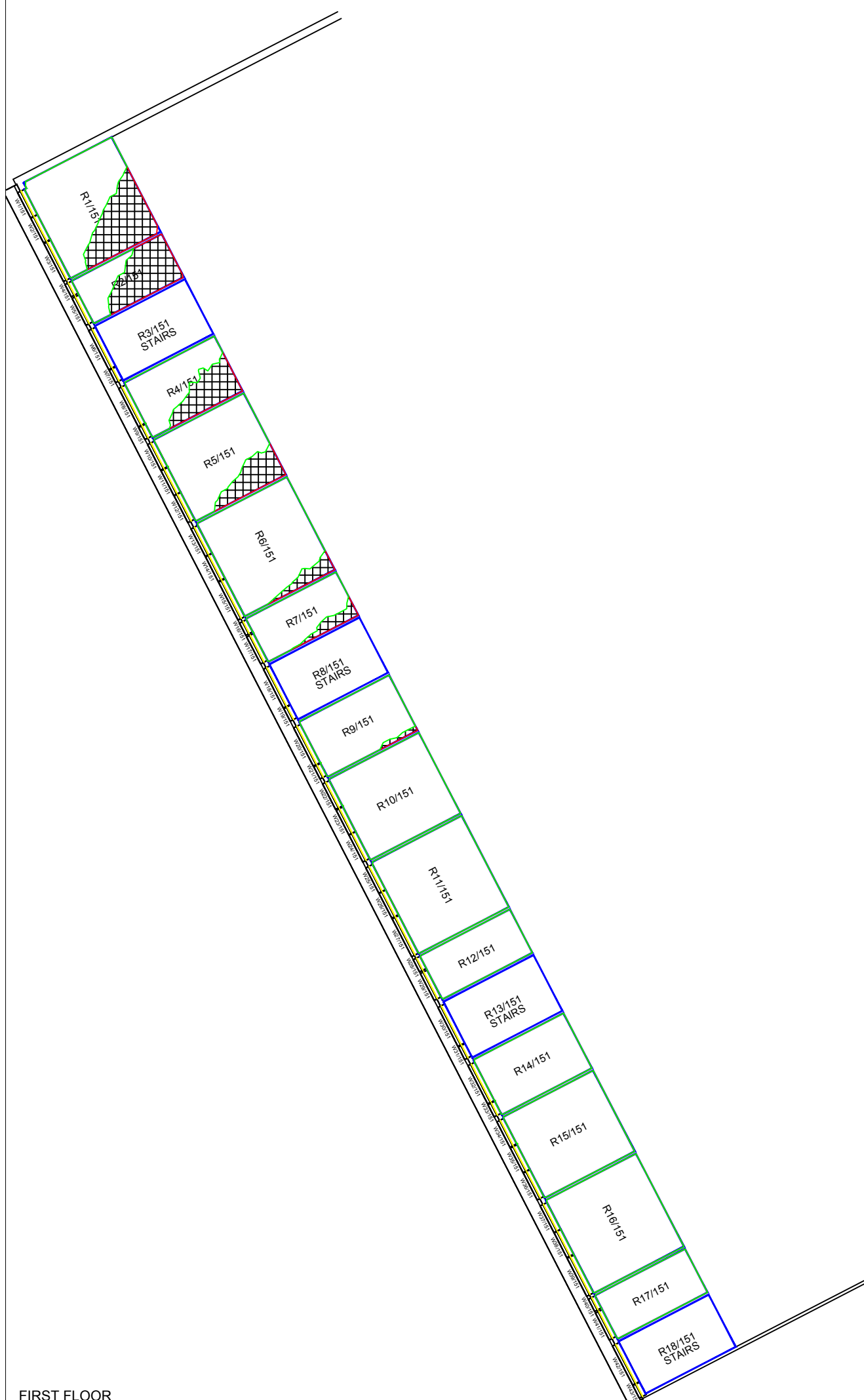
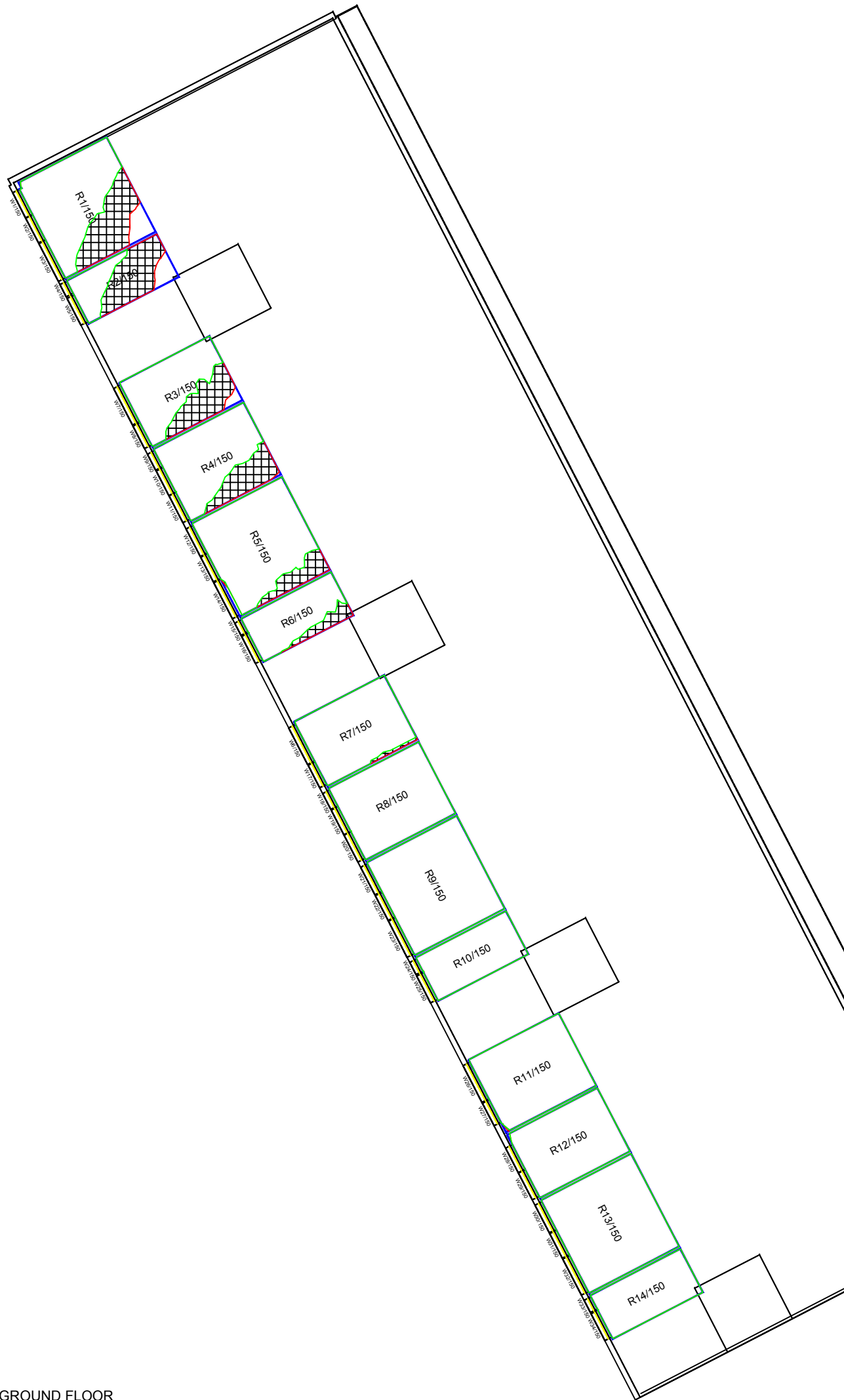
No-Skyline Contours For
2-104 Wellesley Road

Drawn By	Chk'd By	Scale @ A3	Date
RT	-	1/200	23 SEPT 2016

Project No.	Drawing No.	Revision
BA81 - 30	BRE 132	-

DAYLIGHT

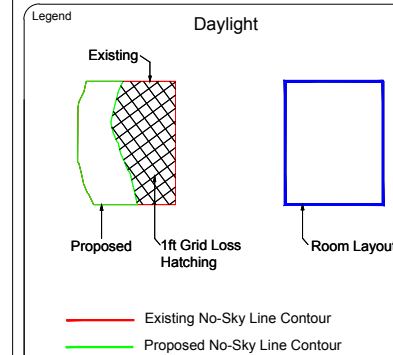
A3



GROUND FLOOR

FIRST FLOOR

Do not scale this drawing.
All dimensions to be checked on site. Drawing to be read in conjunction with any specifications, schedules and Consultants drawings and details.



Sources of Information

Existing And Surrounding Buildings

MBS Survey Software Ltd 3d Survey sent 15 Sept 2012

Proposed Scheme

Karakusevic Carson Architects LLP 3d Model

Sent on 14 SEPT 2016:

- 307-A-D-100-00.dwg
- 307-A-D-100-01.dwg
- 307-A-D-100-02.dwg
- 307-A-D-100-03.dwg
- 307-A-D-100-04.dwg
- 307-A-D-100-05.dwg
- 307-A-D-100-06.dwg
- 307-A-D-100-07.dwg
- 307-A-D-100-08.dwg
- 307-A-D-300-01.dwg
- 307-A-D-300-02.dwg
- 307-A-D-300-03.dwg
- 307-A-D-300-04.dwg
- 307-A-D-300-05.dwg
- 307-A-D-300-06.dwg
- 307-A-D-200-01.dwg
- 307-A-D-200-02.dwg
- 307-A-D-200-03.dwg
- 307-A-D-200-04.dwg
- 307-A-D-200-05.dwg
- 307-A-D-200-06.dwg

Sent on 20 SEPT 2016:

- 307_DAS_GA_Site Plan.pdf
- 307_Levels_KCA markup_rev 01.PDF
- 307_Levels_KCA markup_rev 02.pdf

Sent on 20 SEPT 2016:

- 550355Aug16_Data_Tables.xlsx
- 550355nfAug16V1_TCP.dwg



08449 02 03 04
GVA Schatunowski Brooks
10 Stratton Street, London, W1J 8JR
www.gva.co.uk

Project Name

Bacton Low Rise
Gospel Oak

Client

LONDON BOROUGH OF CAMDEN

Drawing Title

No-Skyline Contours For
2-104 Wellesley Road

Drawn By

RT

Chk'd By

-

Scale @ A3

1/200

Date

23 SEPT 2016

Project No.

BA81 - 30

Drawing No.

BRE 133

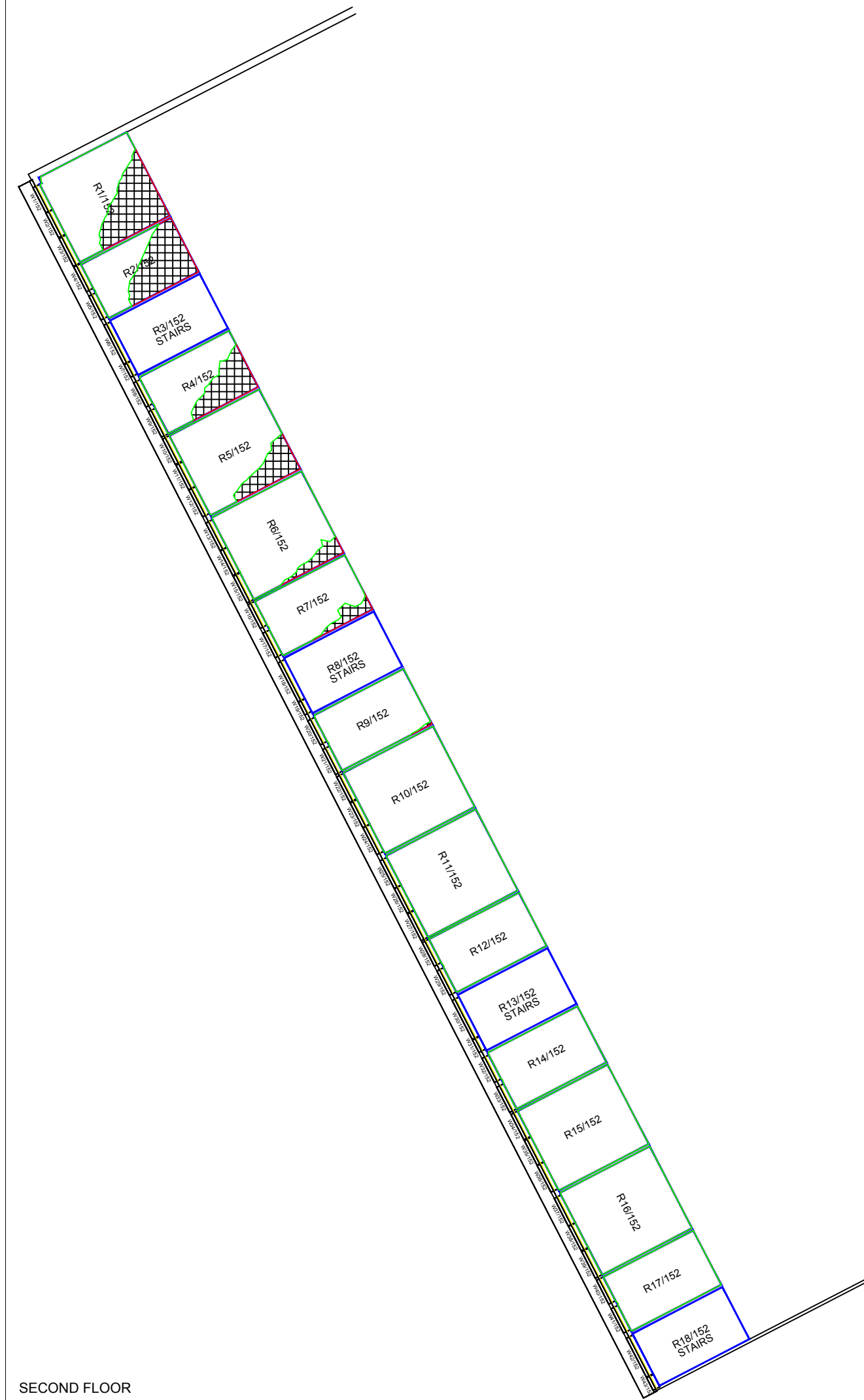
Revision

-

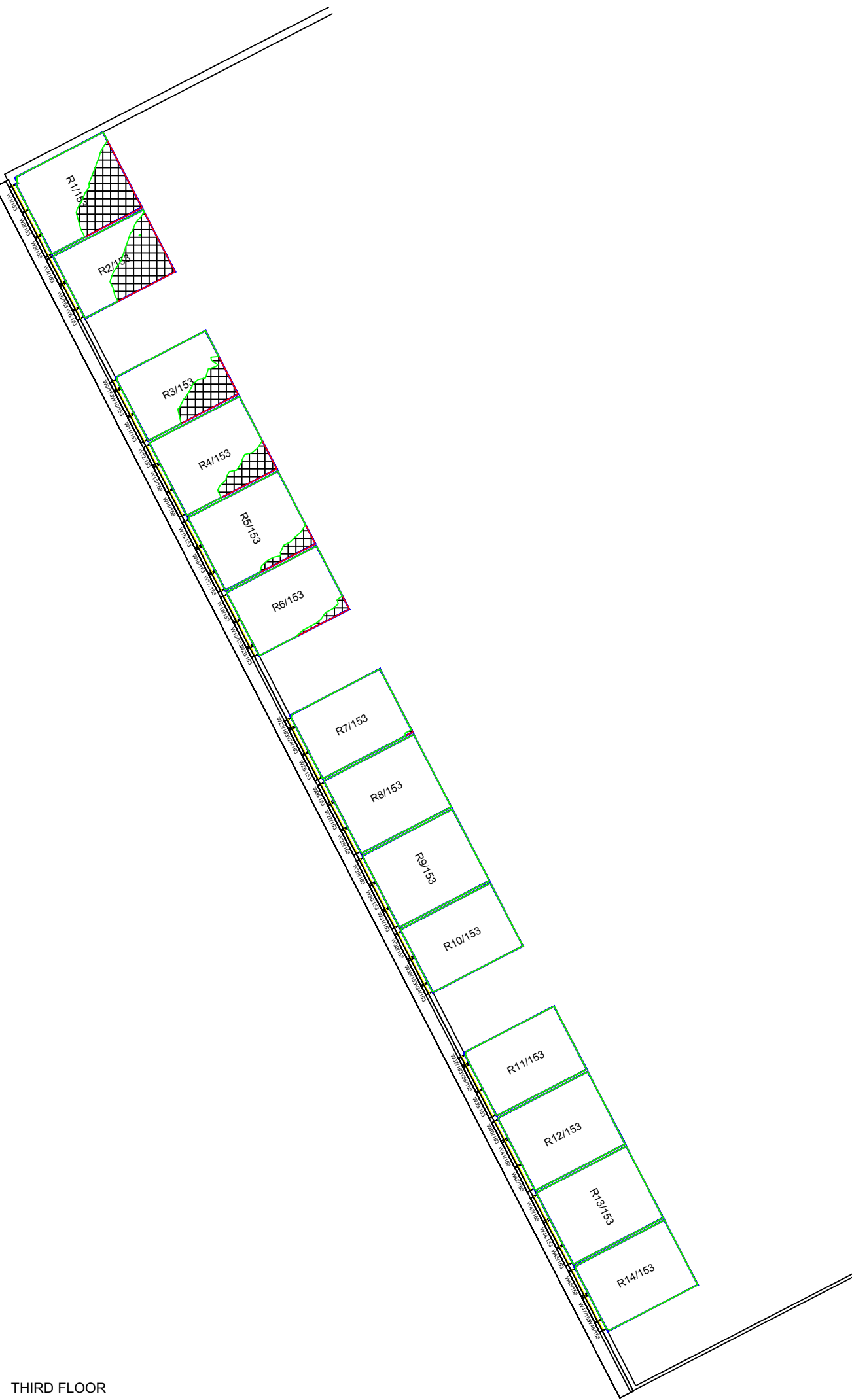
DAYLIGHT

A3

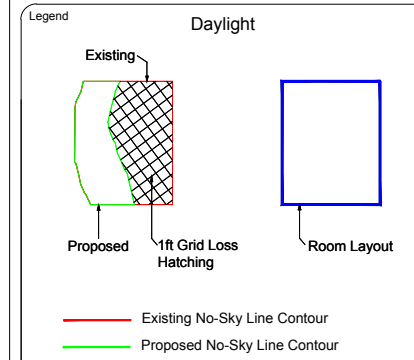
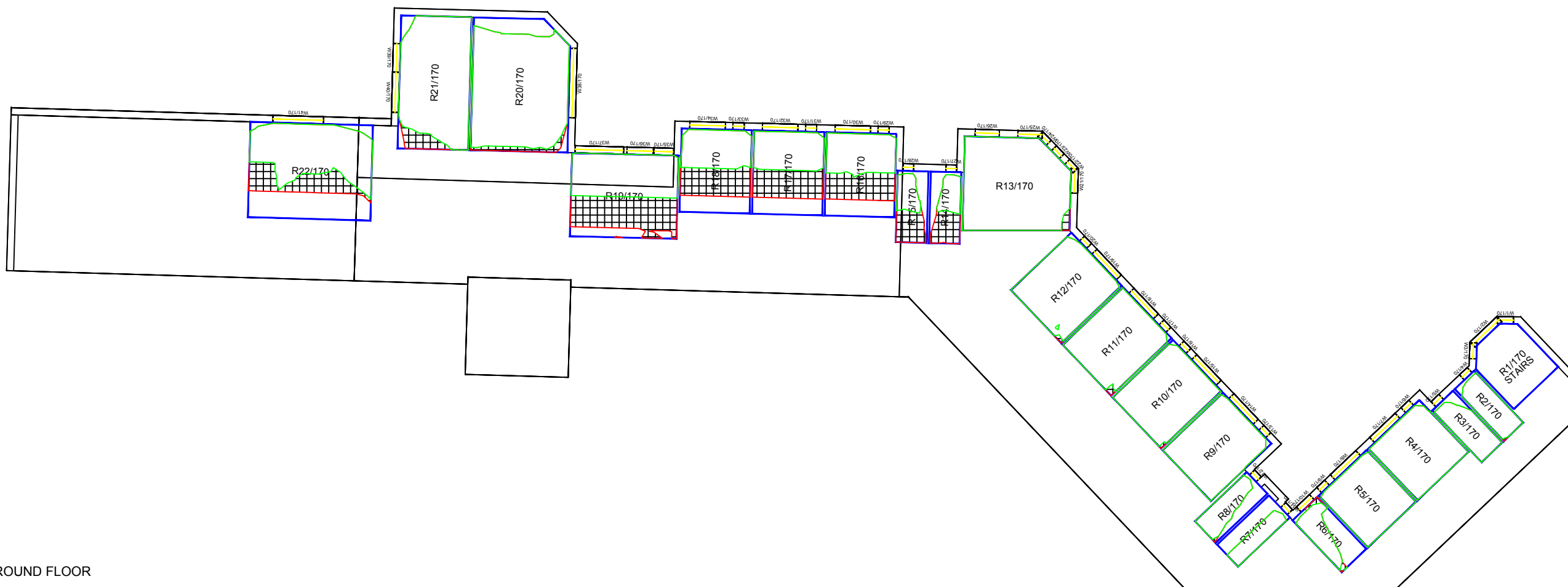
SECOND FLOOR



THIRD FLOOR



Do not scale this drawing.
All dimensions to be checked on site. Drawing to be read in conjunction with any specifications, schedules and Consultants drawings and details.



Sources of Information

Existing And Surrounding Buildings

MBS Survey Software Ltd 3d Survey sent 15 Sept 2012

Proposed Scheme

Karakusevic Carson Architects LLP 3d Model

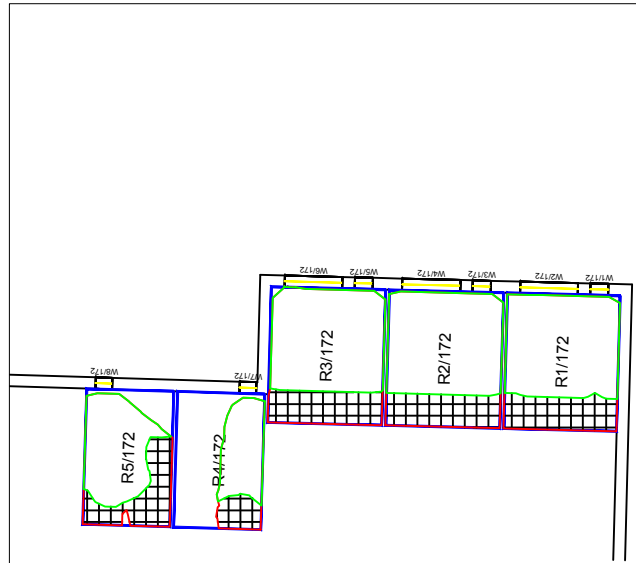
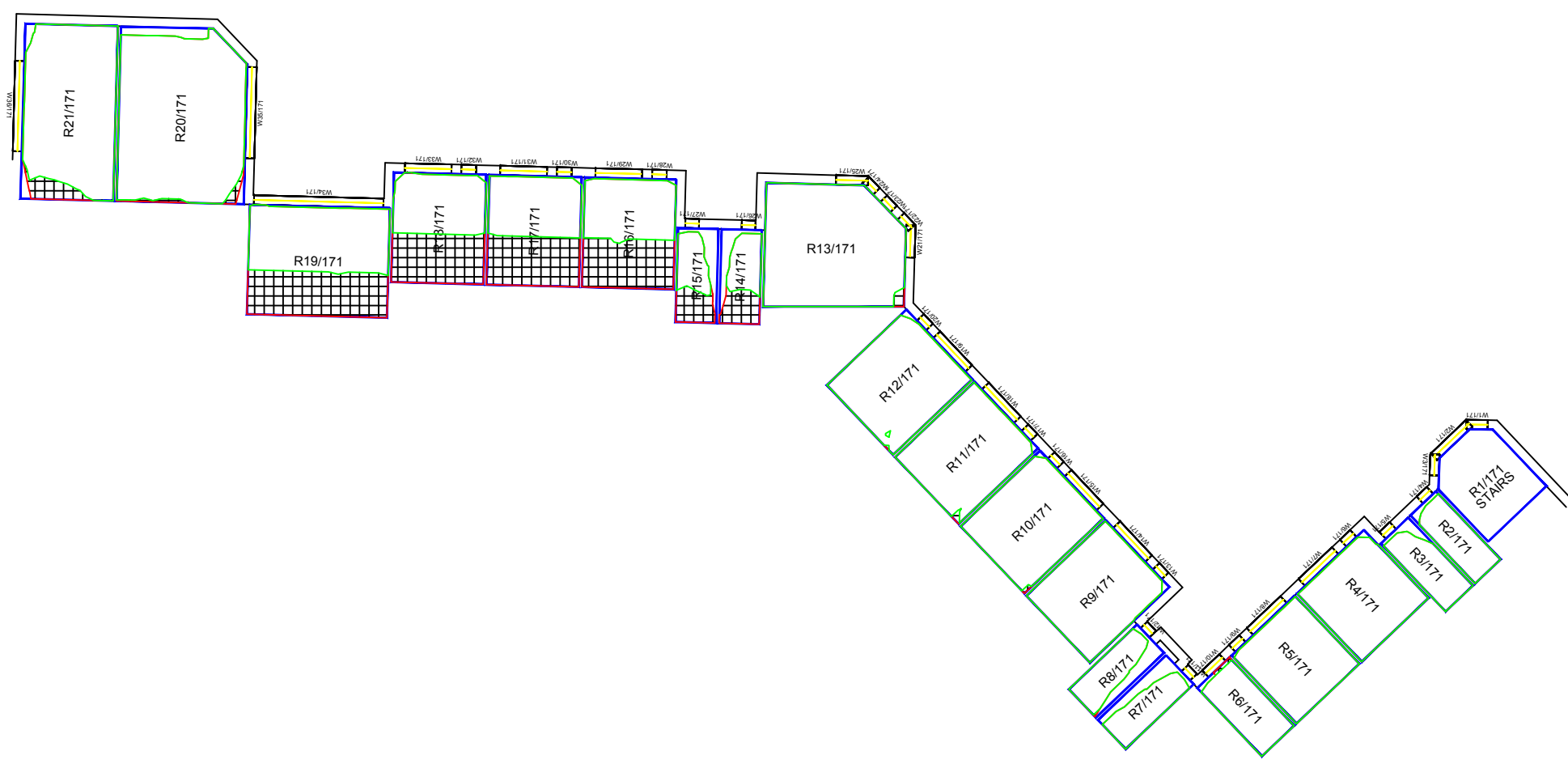
Sent on 14 SEPT 2016:
 307-A-D-100-00.dwg
 307-A-D-100-01.dwg
 307-A-D-100-02.dwg
 307-A-D-100-03.dwg
 307-A-D-100-04.dwg
 307-A-D-100-05.dwg
 307-A-D-100-06.dwg
 307-A-D-100-07.dwg
 307-A-D-100-08.dwg
 307-A-D-300-01.dwg
 307-A-D-300-02.dwg
 307-A-D-300-03.dwg
 307-A-D-300-04.dwg
 307-A-D-300-05.dwg
 307-A-D-300-06.dwg

307-A-D-200-01.dwg
 307-A-D-200-02.dwg
 307-A-D-200-03.dwg
 307-A-D-200-04.dwg
 307-A-D-200-05.dwg
 307-A-D-200-06.dwg

Sent on 20 SEPT 2016:
 307_DAS_GA_Site Plan.pdf
 307_Levels_KCA markup_rev 01.PDF
 307_Levels_KCA markup_rev 02.pdf

Sent on 20 SEPT 2016:
 550355Aug16_Data_Tables.xlsx
 550355nfAug16V1_TCP.dwg

GROUND FLOOR



FIRST FLOOR

SECOND FLOOR



08449 02 03 04
GVA Schatunowski Brooks
 10 Stratton Street, London, W1J 8JR
 www.gva.co.uk

Project Name
**Bacton Low Rise
 Gospel Oak**

Client
 LONDON BOROUGH OF CAMDEN

Drawing Title
**No-Skyline Contours For
 1 Wellesley Road**

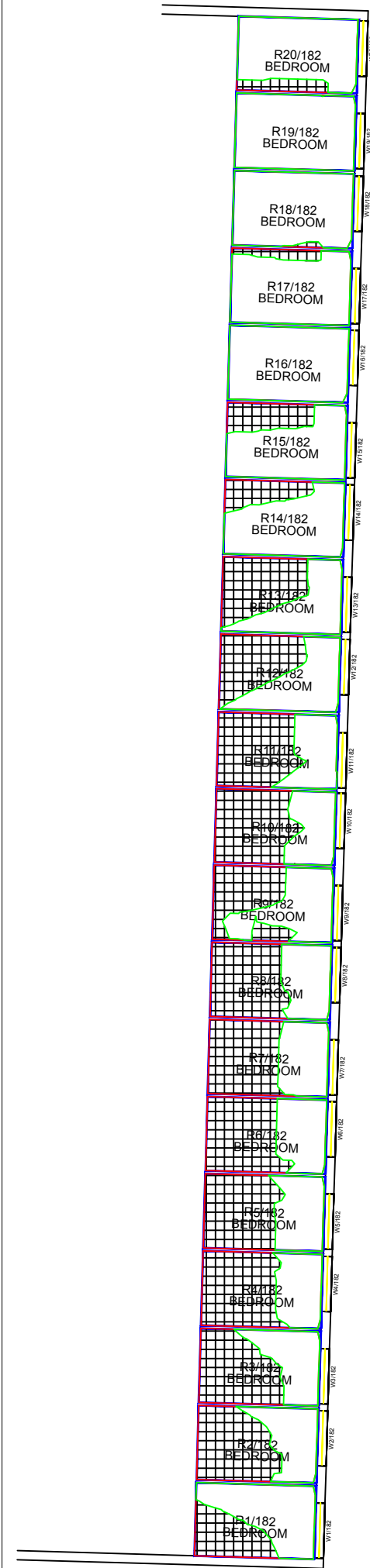
Drawn By RT	Chk'd By -	Scale @ A3 1/200	Date 23 SEPT 2016
----------------	---------------	---------------------	----------------------

Project No. BA81 - 30	Drawing No. BRE 134	Revision -
--------------------------	------------------------	---------------

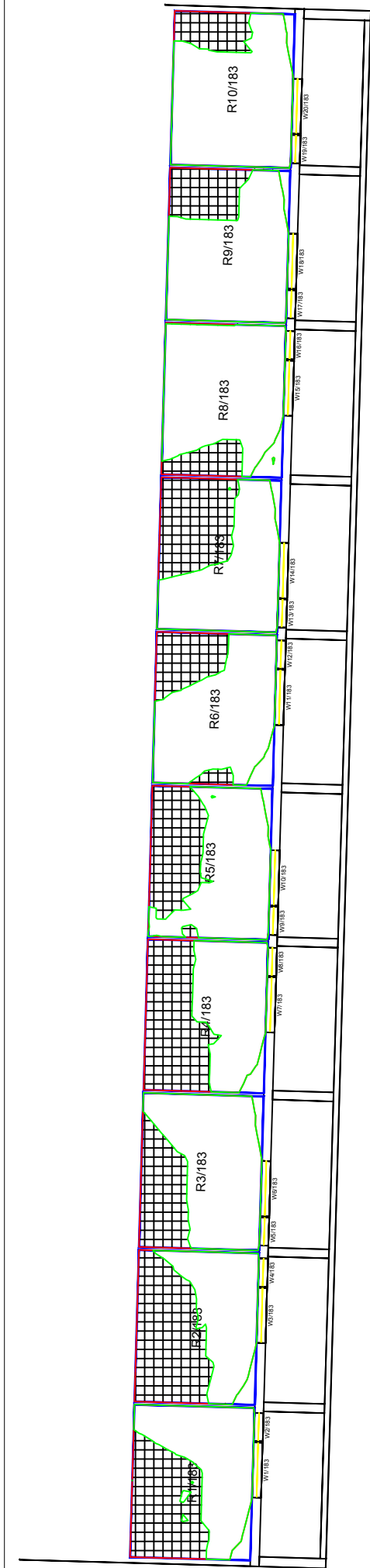
DAYLIGHT

A3

Do not scale this drawing.
All dimensions to be checked on site. Drawing to be read in conjunction with any specifications, schedules and Consultants drawings and details.



SECOND FLOOR



THIRD FLOOR

Legend

Daylight

Existing (hatched area)
Proposed (solid area)
1ft Grid Loss Hatching (cross-hatched area)
Room Layout (blue outline)

Existing No-Sky Line Contour (red line)
Proposed No-Sky Line Contour (green line)

Sources of Information

Existing And Surrounding Buildings

MBS Survey Software Ltd 3d Survey sent 15 Sept 2012

Proposed Scheme

Karakusevic Carson Architects LLP 3d Model

Sent on 14 SEPT 2016:
307-A-D-100-00.dwg
307-A-D-100-01.dwg
307-A-D-100-02.dwg
307-A-D-100-03.dwg
307-A-D-100-04.dwg
307-A-D-100-05.dwg
307-A-D-100-06.dwg
307-A-D-100-07.dwg
307-A-D-100-08.dwg
307-A-D-300-01.dwg
307-A-D-300-02.dwg
307-A-D-300-03.dwg
307-A-D-300-04.dwg
307-A-D-300-05.dwg
307-A-D-300-06.dwg

307-A-D-200-01.dwg
307-A-D-200-02.dwg
307-A-D-200-03.dwg
307-A-D-200-04.dwg
307-A-D-200-05.dwg
307-A-D-200-06.dwg

Sent on 20 SEPT 2016:
307_DAS_GA_Site Plan.pdf
307_Levels_KCA markup_rev 01.PDF
307_Levels_KCA markup_rev 02.pdf

Sent on 20 SEPT 2016:
550355Aug16_Data_Tables.xlsx
550355nfAug16V1_TCP.dwg



08449 02 03 04
GVA Schatunowski Brooks
10 Stratton Street, London, W1J 8JR
www.gva.co.uk

Project Name
Bacton Low Rise
Gospel Oak

Client
EC Harris

Drawing Title
No-Skyline Contours For
58-74 Haverstock Road

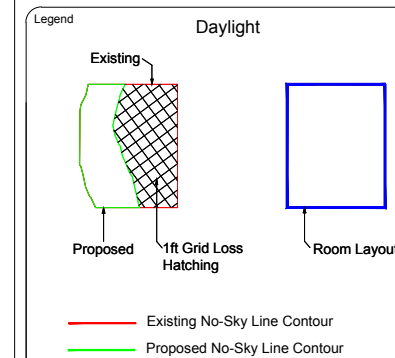
Drawn By RT	Chk'd By -	Scale @ A3 1/200	Date 23 SEPT 2016
----------------	---------------	---------------------	----------------------

Project No. BA81 - 30	Drawing No. BRE 135	Revision -
--------------------------	------------------------	---------------

DAYLIGHT

A3

Do not scale this drawing.
All dimensions to be checked on site. Drawing to be read in conjunction with any specifications, schedules and Consultants drawings and details.



Sources of Information

Existing And Surrounding Buildings

MBS Survey Software Ltd 3d Survey sent 15 Sept 2012

Proposed Scheme

Karakusevic Carson Architects LLP 3d Model

Sent on 14 SEPT 2016:

- 307-A-D-100-00.dwg
- 307-A-D-100-01.dwg
- 307-A-D-100-02.dwg
- 307-A-D-100-03.dwg
- 307-A-D-100-04.dwg
- 307-A-D-100-05.dwg
- 307-A-D-100-06.dwg
- 307-A-D-100-07.dwg
- 307-A-D-100-08.dwg
- 307-A-D-300-01.dwg
- 307-A-D-300-02.dwg
- 307-A-D-300-03.dwg
- 307-A-D-300-04.dwg
- 307-A-D-300-05.dwg
- 307-A-D-300-06.dwg

Sent on 20 SEPT 2016:

- 307_DAS_GA_Site Plan.pdf
- 307_Levels_KCA markup_rev 01.PDF
- 307_Levels_KCA markup_rev 02.pdf

Sent on 20 SEPT 2016:

- 550355Aug16_Data_Tables.xlsx
- 550355nAug16V1_TCP.dwg



08449 02 03 04
GVA Schatunowski Brooks
10 Stratton Street, London, W1J 8JR
www.gva.co.uk

Project Name

DAYLIGHT
Gospel Oak

Client

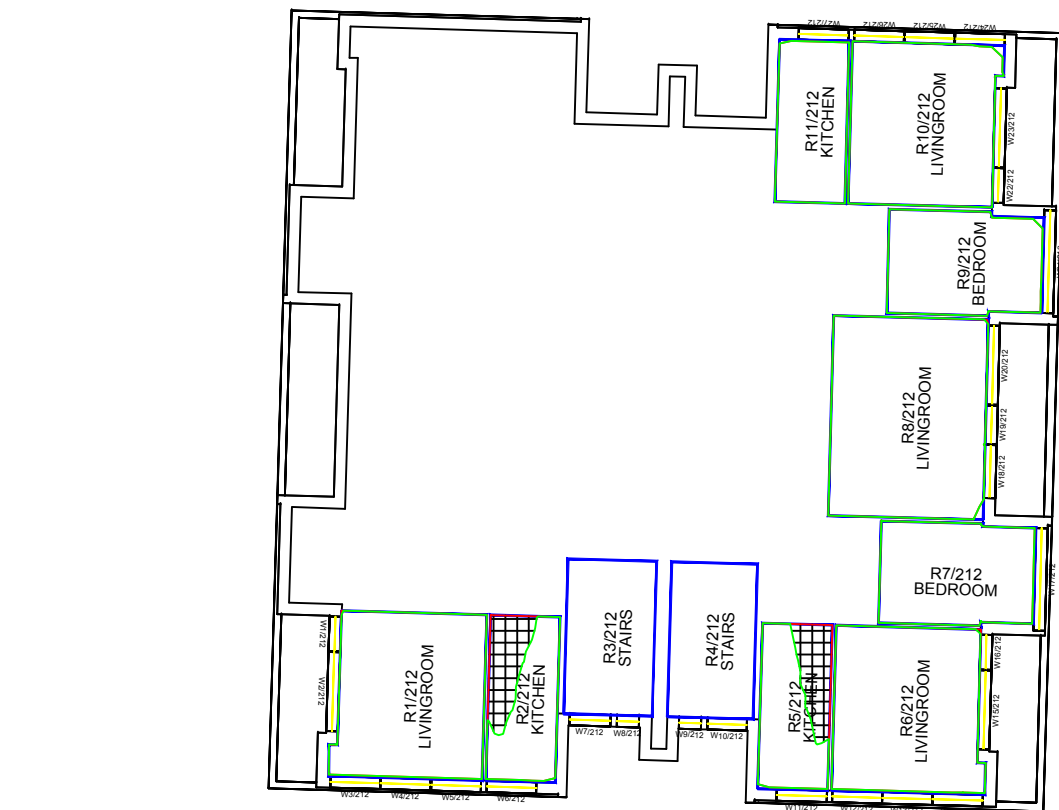
LONDON BOROUGH OF CAMDEN

Drawing Title

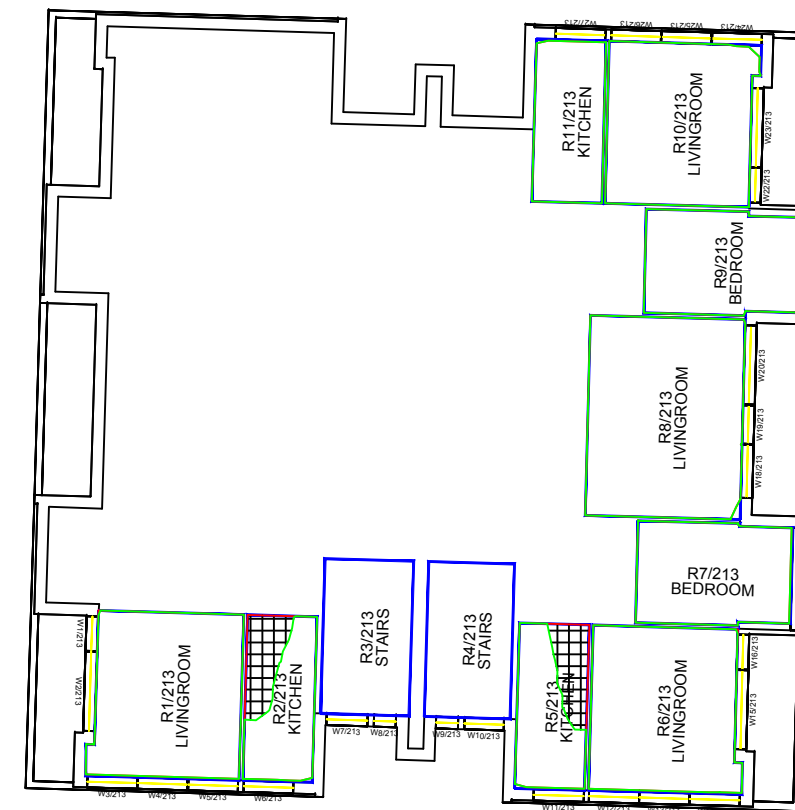
No-Skyline Contours For
1-120 Haverstock Road

Drawn By	Chk'd By	Scale @ A3	Date
RT	-	1/200	23 SEPT 2016

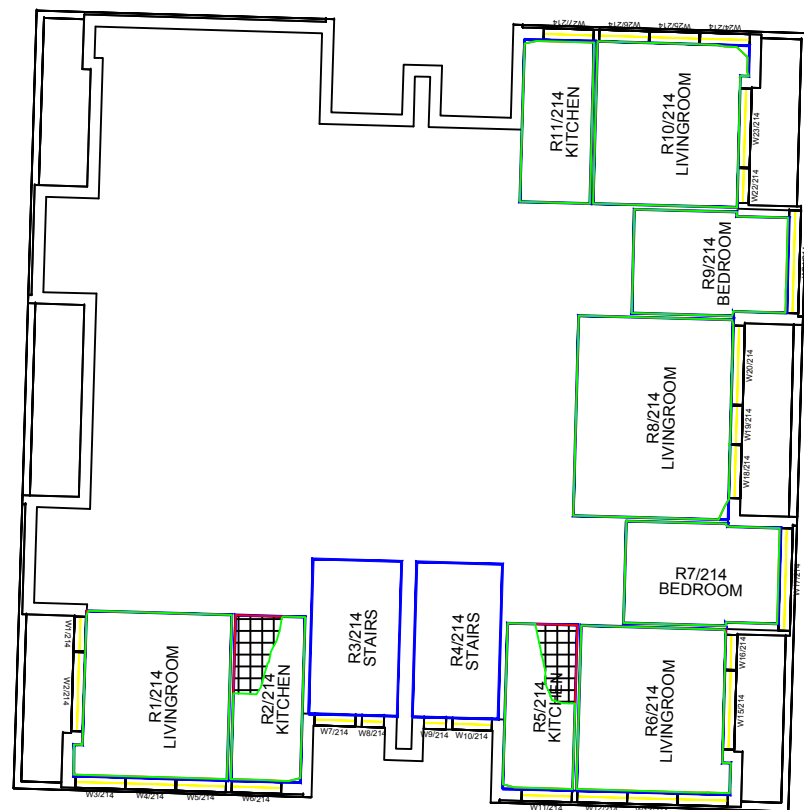
Project No.	Drawing No.	Revision
BA81 - 30	BRE 136	-



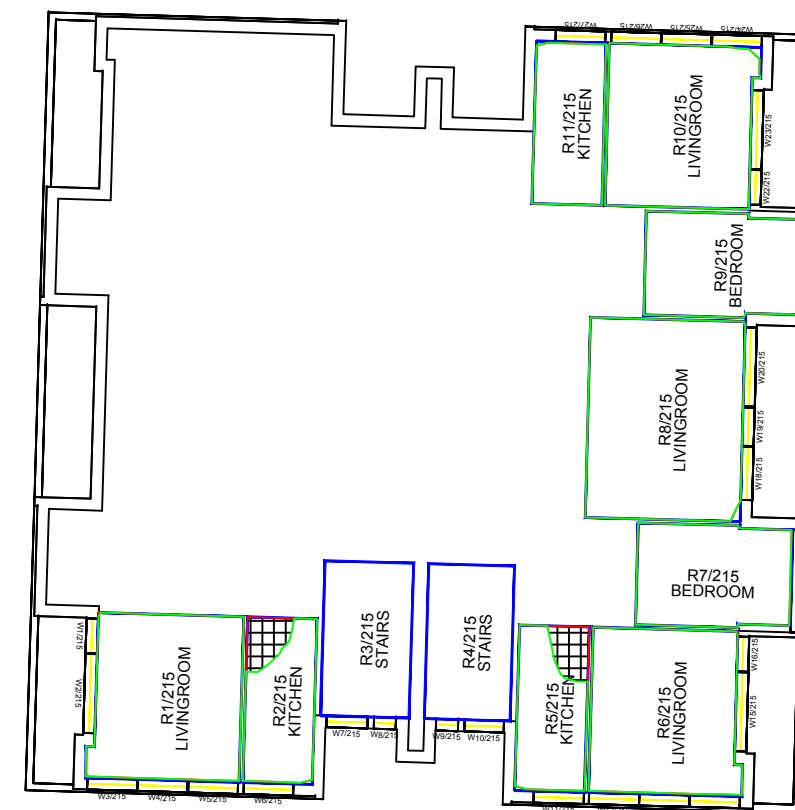
SECOND FLOOR



THIRD FLOOR

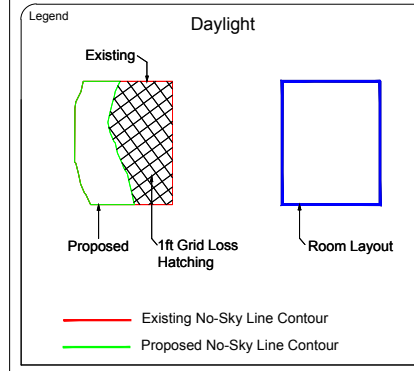


FOURTH FLOOR



FIFTH FLOOR

Do not scale this drawing. All dimensions to be checked on site. Drawing to be read in conjunction with any specifications, schedules and Consultants drawings and details.



Sources of Information

Existing And Surrounding Buildings

MBS Survey Software Ltd 3d Survey sent 15 Sept 2012

Proposed Scheme

- Karakusevic Carson Architects LLP 3d Model
- Sent on 14 SEPT 2016:
- 307-A-D-100-00.dwg
 - 307-A-D-100-01.dwg
 - 307-A-D-100-02.dwg
 - 307-A-D-100-03.dwg
 - 307-A-D-100-04.dwg
 - 307-A-D-100-05.dwg
 - 307-A-D-100-06.dwg
 - 307-A-D-100-07.dwg
 - 307-A-D-100-08.dwg
 - 307-A-D-300-01.dwg
 - 307-A-D-300-02.dwg
 - 307-A-D-300-03.dwg
 - 307-A-D-300-04.dwg
 - 307-A-D-300-05.dwg
 - 307-A-D-300-06.dwg

- Sent on 20 SEPT 2016:
- 307_DAS_GA_Site Plan.pdf
 - 307_Levels_KCA markup_rev 01.PDF
 - 307_Levels_KCA markup_rev 02.pdf

- Sent on 20 SEPT 2016:
- 550355Aug16_Data_Tables.xlsx
 - 550355nfAug16V1_TCP.dwg



08449 02 03 04
GVA Schatunowski Brooks
 10 Stratton Street, London, W1J 8JR
 www.gva.co.uk

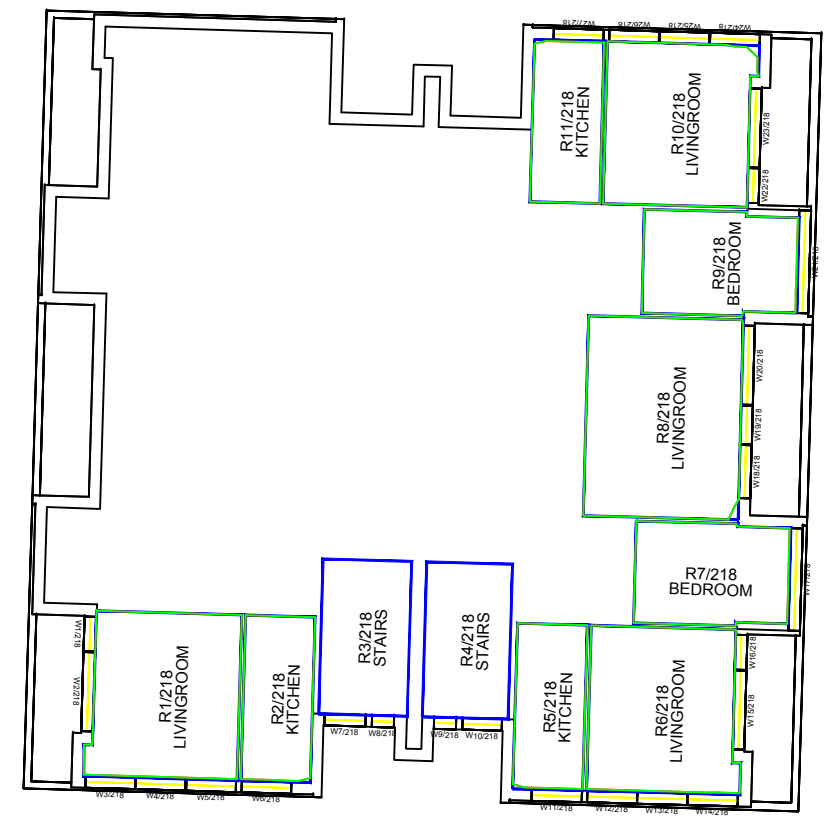
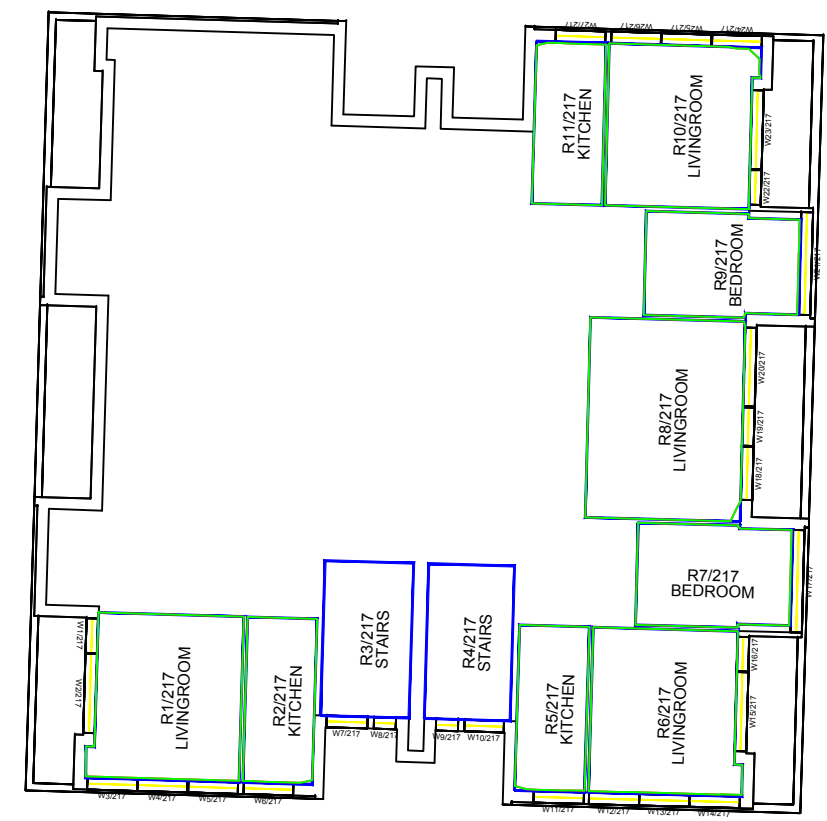
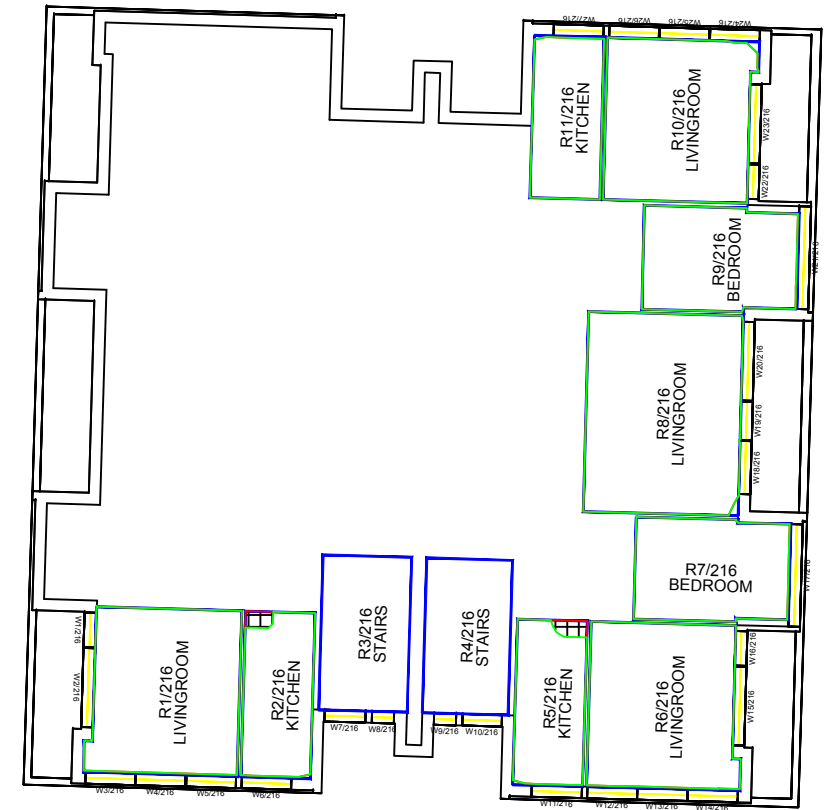
Project Name
**Bacton Low Rise
 Gospel Oak**

Client
LONDON BOROUGH OF CAMDEN

Drawing Title
**No-Skyline Contours For
 1-120 Haverstock Road**

Drawn By RT	Chk'd By -	Scale @ A3 1/200	Date 23 SEPT 2016
----------------	---------------	---------------------	----------------------

Project No. BA81 - 30	Drawing No. BRE 137	Revision -
--------------------------	------------------------	---------------



SIXTH FLOOR

SEVENTH FLOOR

EIGHTH FLOOR

DAYLIGHT

BA81 - BACTON LOW RISE
23-Sep-16
JOB 30 - DAYLIGHT RESULTS

Room/Floor	Room Use	Window	%VSC			% Daylight Factor			Proposed No Sky	
			Exist	Prop	% Loss	Exist	Prop	% Loss	% of Room Area	% Loss of Existing
113 WELLESLEY ROAD BA81/30/BRE/131										
Gnd Floor										
R1/10		W1/10	30.31	28.39	>27	5.08	4.37	13.92%	98.87%	0.69%
		W18/10	27.79	15.36	44.73%					
R10/10		W15/10	14.24	13.54	4.92%	0.26	0.26	1.53%	66.64%	-2.96%
R11/10		W16/10	19.98	14.53	27.28%	4.06	2.74	32.59%	84.93%	14.97%
		W17/10	27.49	14.75	46.34%					
1st Floor										
R1/11		W1/11	32.32	30.18	>27	6.70	5.78	13.76%	99.50%	0.31%
		W24/11	30.32	17.81	41.26%					
R13/11		W21/11	25.19	17.84	29.18%	1.85	1.43	22.55%	49.56%	35.19%
R14/11		W22/11	23.53	16.42	30.22%	5.16	3.58	30.56%	86.18%	13.71%
		W23/11	29.99	17.20	42.65%					
2nd Floor										
R1/12		W1/12	34.33	32.06	>27	5.52	4.80	13.06%	99.12%	0.44%
		W19/12	32.75	20.86	36.31%					
R11/12		W15/12	29.38	20.60	29.88%	2.07	1.58	23.49%	55.92%	42.88%
R12/12		W16/12	28.13	19.17	31.85%	4.94	3.52	28.79%	95.32%	4.59%
		W17/12	32.44	20.30	37.42%					
		W18/12	32.64	20.47	37.29%					
24 VICAR'S ROAD BA81/30/BRE/131										
Gnd Floor										
R3/10		W5/10	29.05	27.31	>27	6.82	6.52	4.40%	99.88%	0.00%
R4/10		W6/10	27.92	26.49	5.12%	7.56	7.28	3.78%	100.00%	0.00%
R5/10		W7/10	27.24	25.89	4.96%	6.50	6.26	3.66%	99.65%	0.00%
1st Floor										
R3/11		W3/11	31.19	29.40	>27	6.13	5.85	4.51%	98.73%	0.00%
R4/11		W4/11	30.24	28.76	>27	6.83	6.56	3.84%	98.74%	0.00%
R5/11		W5/11	29.67	28.31	>27	5.91	5.70	3.64%	98.27%	0.00%
R7/11		W7/11	29.21	28.29	>27	6.93	6.76	2.45%	100.00%	0.00%
2nd Floor										
R3/12		W3/12	33.26	31.46	>27	7.64	7.30	4.43%	98.73%	0.00%
R4/12		W4/12	32.48	30.99	>27	8.59	8.27	3.71%	98.74%	0.00%
R5/12		W5/12	32.01	30.66	>27	7.44	7.18	3.40%	97.76%	0.00%
R6/12		W6/12	31.65	30.65	>27	7.82	7.62	2.53%	98.97%	0.00%
3rd Floor										
R1/13		W1/13	35.07	33.28	>27	5.85	5.60	4.41%	99.88%	0.00%
R2/13		W2/13	34.42	32.94	>27	6.58	6.34	3.68%	99.94%	0.00%
R3/13		W3/13	34.11	32.78	>27	5.71	5.52	3.34%	98.91%	0.00%
R4/13		W4/13	33.83	32.79	>27	5.97	5.81	2.66%	100.00%	0.00%

Room/Floor	Room Use	Window	%VSC			% Daylight Factor			Proposed No Sky	
			Exist	Prop	% Loss	Exist	Prop	% Loss	% of Room Area	% Loss of Existing
2-104 WELLESLEY ROAD BA81/30/BRE/132,133										
Gnd Floor										
R1/150		W1/150	23.95	10.92	54.41%	4.60	1.82	60.52%	65.67%	30.11%
		W2/150	26.06	13.23	49.23%					
		W3/150	24.02	11.26	53.12%					
R2/150		W4/150	26.62	14.14	46.88%	3.57	1.41	60.43%	35.04%	60.79%
		W5/150	24.55	12.15	50.51%					
R3/150		W7/150	25.49	13.82	45.78%	4.66	2.10	54.91%	68.09%	30.14%
		W8/150	28.06	16.76	40.27%					
R4/150		W9/150	25.98	14.83	42.92%	4.84	2.29	52.62%	76.69%	23.14%
		W10/150	28.49	17.63	38.12%					
		W11/150	26.42	15.69	40.61%					
R5/150		W12/150	26.66	16.41	38.45%	4.54	2.45	46.12%	87.64%	11.56%
		W13/150	29.26	19.22	34.31%					
		W14/150	24.51	14.90	39.21%					
R6/150		W15/150	29.71	20.40	31.34%	3.90	2.14	45.30%	85.37%	14.53%
		W16/150	27.54	18.47	32.93%					
R7/150		W6/150	28.19	20.35	27.81%	5.02	2.90	42.18%	97.89%	2.11%
		W17/150	30.79	23.30	24.33%					
R8/150		W18/150	28.54	21.39	25.05%	5.23	3.15	39.83%	100.00%	0.00%
		W19/150	31.10	24.13	22.41%					
		W20/150	28.86	22.21	23.04%					
R9/150		W21/150	29.06	22.74	21.75%	5.54	3.55	35.92%	100.00%	0.00%
		W22/150	31.65	25.62	19.05%					
		W23/150	29.41	23.83	18.97%					
R10/150		W24/150	31.94	26.72	16.34%	4.14	2.79	32.76%	100.00%	0.00%
		W25/150	29.63	24.62	16.91%					
R11/150		W26/150	29.93	25.93	13.36%	4.80	3.25	32.38%	99.71%	0.07%
		W27/150	32.45	28.72	>27					
R12/150		W28/150	32.60	29.26	>27	4.87	3.28	32.59%	99.75%	0.00%
		W29/150	30.22	27.10	>27					
R13/150		W30/150	30.31	27.40	>27	5.72	4.11	28.03%	99.94%	0.00%
		W31/150	32.83	30.12	>27					
		W32/150	30.45	27.90	>27					
R14/150		W33/150	32.99	30.60	>27	4.23	3.14	25.74%	99.88%	0.00%
		W34/150	30.55	28.28	>27					
1st Floor										
R1/151		W1/151	26.31	12.55	52.30%	4.97	2.00	59.71%	66.94%	32.95%
		W2/151	28.35	14.83	47.69%					
		W3/151	26.23	12.88	50.90%					
R2/151		W4/151	28.78	15.73	45.34%	3.84	1.59	58.70%	38.22%	61.78%
		W5/151	26.65	13.76	48.37%					
R4/151		W8/151	27.39	15.41	43.74%	4.24	2.01	52.64%	65.01%	34.99%
		W9/151	29.88	18.24	38.96%					
R5/151		W10/151	27.74	16.31	41.20%	5.26	2.58	50.95%	80.81%	19.14%
		W11/151	30.25	19.15	36.69%					
		W12/151	28.11	17.20	38.81%					
R6/151		W13/151	28.28	17.88	36.78%	5.55	2.96	46.74%	92.95%	7.05%
		W14/151	30.83	20.67	32.95%					
		W15/151	28.67	19.02	33.66%					
R7/151		W16/151	31.17	21.81	30.03%	4.08	2.28	44.10%	87.42%	12.47%
		W17/151	28.95	19.86	31.40%					

Room/Floor	Room Use	Window	%VSC			% Daylight Factor			Proposed No Sky	
			Exist	Prop	% Loss	Exist	Prop	% Loss	% of Room Area	% Loss of Existing
R9/151		W20/151	29.46	21.65	26.51%	4.48	2.74	38.84%	97.15%	2.85%
		W21/151	32.02	24.53	23.39%					
R10/151		W22/151	29.72	22.49	24.33%	5.57	3.42	38.62%	100.00%	0.00%
		W23/151	32.27	25.34	21.48%					
		W24/151	29.98	23.40	21.95%					
R11/151		W25/151	30.12	23.89	20.68%	5.76	3.72	35.37%	100.00%	0.00%
		W26/151	32.66	26.73	18.16%					
		W27/151	30.39	24.81	18.36%					
R12/151		W28/151	32.87	27.66	>27	4.25	2.88	32.24%	100.00%	0.00%
		W29/151	30.48	25.62	15.94%					
R14/151		W32/151	30.73	26.87	12.56%	4.64	3.32	28.51%	99.90%	0.00%
		W33/151	33.21	29.59	>27					
R15/151		W34/151	30.84	27.45	>27	5.72	4.02	29.72%	100.00%	0.00%
		W35/151	33.33	30.10	>27					
		W36/151	30.90	27.91	>27					
R16/151		W37/151	30.97	28.22	>27	5.89	4.26	27.61%	99.94%	0.00%
		W38/151	33.47	30.85	>27					
		W39/151	31.07	28.63	>27					
R17/151		W40/151	33.59	31.29	>27	4.33	3.23	25.57%	99.88%	0.00%
		W41/151	31.14	28.96	>27					
2nd Floor										
R1/152		W1/152	28.91	14.83	48.70%	5.26	2.24	57.35%	64.60%	35.32%
		W2/152	30.73	16.89	45.04%					
		W3/152	28.68	15.10	47.35%					
R2/152		W4/152	28.82	15.56	46.01%	3.87	1.89	51.12%	48.64%	51.31%
		W5/152	29.00	16.00	44.83%					
R4/152		W8/152	29.44	17.45	40.73%	3.90	2.09	46.35%	67.87%	32.06%
		W9/152	29.61	18.01	39.18%					
R5/152		W10/152	29.76	18.40	38.17%	5.59	2.90	48.20%	82.10%	17.85%
		W11/152	32.07	21.01	34.49%					
		W12/152	30.01	19.23	35.92%					
R6/152		W13/152	30.13	19.86	34.09%	5.67	3.11	45.15%	92.39%	7.55%
		W14/152	32.48	22.43	30.94%					
		W15/152	30.37	20.72	31.77%					
R7/152		W16/152	30.47	21.20	30.42%	3.99	2.49	37.64%	90.38%	9.62%
		W17/152	30.59	21.69	29.09%					
R9/152		W20/152	30.95	23.17	25.14%	4.09	2.73	33.39%	99.34%	0.66%
		W21/152	31.05	23.64	23.86%					
R10/152		W22/152	31.13	24.10	22.58%	5.73	3.61	36.99%	100.00%	0.00%
		W23/152	33.50	26.76	20.12%					
		W24/152	31.29	24.94	20.29%					
R11/152		W25/152	31.38	25.41	19.02%	5.87	3.85	34.47%	99.94%	0.00%
		W26/152	33.73	28.06	>27					
		W27/152	31.53	26.21	16.87%					
R12/152		W28/152	31.54	26.60	15.66%	4.14	3.06	26.06%	99.90%	0.00%
		W29/152	31.61	27.01	>27					
R14/152		W32/152	31.71	28.05	>27	4.12	3.17	23.10%	99.91%	0.00%
		W33/152	31.74	28.33	>27					
R15/152		W34/152	31.80	28.61	>27	5.88	4.19	28.72%	100.00%	0.00%
		W35/152	34.12	31.08	>27					
		W36/152	31.82	29.01	>27					

Room/Floor	Room Use	Window	%VSC			% Daylight Factor			Proposed No Sky	
			Exist	Prop	% Loss	Exist	Prop	% Loss	% of Room Area	% Loss of Existing
R16/152		W37/152	31.88	29.29	>27	5.88	4.27	27.37%	100.00%	0.00%
		W38/152	34.22	31.75	>27					
		W39/152	31.95	29.63	>27					
R17/152		W40/152	31.97	29.78	>27	4.15	3.34	19.58%	100.00%	0.00%
		W41/152	32.00	29.94	>27					
3rd Floor										
R1/153		W1/153	36.78	22.90	37.74%	6.57	3.47	47.21%	63.33%	36.62%
		W2/153	36.68	23.03	37.21%					
		W3/153	36.95	23.65	35.99%					
R2/153		W4/153	37.02	24.00	35.17%	6.52	3.49	46.46%	59.53%	40.42%
		W5/153	36.93	24.11	34.71%					
		W6/153	37.14	24.64	33.66%					
R3/153		W9/153	37.34	25.74	31.07%	6.43	3.64	43.34%	75.08%	24.86%
		W10/153	37.26	25.72	30.97%					
		W11/153	37.46	26.41	29.50%					
R4/153		W12/153	37.54	26.73	28.80%	6.69	3.97	40.63%	84.21%	15.79%
		W13/153	37.46	26.89	28.22%					
		W14/153	37.66	27.51	>27					
R5/153		W15/153	37.72	27.97	>27	6.74	4.12	38.83%	91.72%	8.28%
		W16/153	37.68	28.13	>27					
		W17/153	37.84	28.73	>27					
R6/153		W18/153	37.90	29.14	>27	6.54	4.06	38.00%	95.04%	4.88%
		W19/153	37.84	29.29	>27					
		W20/153	37.98	29.80	>27					
R7/153		W23/153	38.13	30.84	>27	6.55	4.25	35.11%	99.67%	0.33%
		W24/153	38.08	30.91	>27					
		W25/153	38.21	31.47	>27					
R8/153		W26/153	38.24	31.86	>27	6.77	4.56	32.64%	100.00%	0.00%
		W27/153	38.22	32.00	>27					
		W28/153	38.32	32.50	>27					
R9/153		W29/153	38.36	32.89	>27	6.81	4.69	31.02%	100.00%	0.00%
		W30/153	38.33	33.12	>27					
		W31/153	38.44	33.56	>27					
R10/153		W32/153	38.44	33.89	>27	6.66	4.65	30.22%	100.00%	0.00%
		W33/153	38.41	34.05	>27					
		W34/153	38.48	34.40	>27					
R11/153		W37/153	38.56	35.10	>27	6.62	4.76	28.09%	99.92%	0.00%
		W38/153	38.51	35.20	>27					
		W39/153	38.57	35.46	>27					
R12/153		W40/153	38.62	35.69	>27	6.82	5.02	26.34%	99.93%	0.00%
		W41/153	38.56	35.77	>27					
		W42/153	38.62	36.03	>27					
R13/153		W43/153	38.66	36.22	>27	6.82	5.08	25.54%	100.00%	0.00%
		W44/153	38.62	36.32	>27					
		W45/153	38.67	36.50	>27					
R14/153		W46/153	38.71	36.64	>27	6.56	4.87	25.71%	99.92%	0.00%
		W47/153	38.68	36.71	>27					
		W48/153	38.72	36.82	>27					

Room/Floor	Room Use	Window	%VSC			% Daylight Factor			Proposed No Sky	
			Exist	Prop	% Loss	Exist	Prop	% Loss	% of Room Area	% Loss of Existing
1 WELLESLEY ROAD BA81/30/BRE/134										
Gnd Floor										
R2/170		W4/170	26.71	23.62	11.57%	1.00	0.94	6.50%	93.91%	0.29%
R3/170		W5/170	20.24	16.68	17.59%	0.78	0.73	6.92%	88.89%	0.00%
R4/170		W6/170	28.04	24.57	12.38%	3.42	3.14	8.13%	98.21%	0.00%
		W7/170	26.33	23.13	12.15%					
R5/170		W8/170	21.43	18.80	12.27%	3.00	2.77	7.73%	98.55%	0.00%
		W9/170	17.28	15.07	12.79%					
R6/170		W10/170	10.93	9.57	12.44%	0.82	0.80	2.43%	50.98%	7.91%
R7/170		W11/170	14.11	11.48	18.64%	0.58	0.51	11.48%	50.00%	0.00%
R8/170		W12/170	9.81	9.81	0.00%	0.54	0.54	0.00%	66.34%	1.11%
R9/170		W13/170	26.82	23.41	12.71%	3.24	2.93	9.54%	98.01%	0.00%
		W14/170	28.91	25.36	12.28%					
R10/170		W15/170	31.03	27.25	>27	3.41	3.07	9.99%	98.29%	0.36%
		W16/170	31.59	27.71	>27					
R11/170		W17/170	31.86	27.82	>27	3.48	3.10	11.02%	97.74%	0.91%
		W18/170	31.85	27.66	>27					
R12/170		W19/170	31.11	26.81	13.82%	3.33	2.95	11.45%	97.66%	0.62%
		W20/170	29.65	25.51	13.96%					
R13/170		W21/170	31.94	29.43	>27	5.98	4.55	23.93%	98.54%	1.46%
		W22/170	31.13	25.72	17.38%					
		W23/170	30.98	25.23	18.56%					
		W24/170	30.64	24.72	19.32%					
		W25/170	27.20	18.99	30.18%					
		W26/170	26.45	18.22	31.12%					
R14/170		W27/170	12.59	8.48	32.64%	0.60	0.46	23.84%	34.14%	53.31%
R15/170		W28/170	13.14	8.71	33.71%	0.61	0.46	23.93%	34.21%	54.17%
R16/170		W29/170	26.87	18.15	32.45%	3.05	2.24	26.56%	46.90%	40.67%
		W30/170	26.82	18.03	32.77%					
R17/170		W31/170	26.67	17.87	33.00%	3.01	2.21	26.66%	45.14%	42.76%
		W32/170	26.49	17.73	33.07%					
R18/170		W33/170	26.13	17.46	33.18%	2.98	2.20	26.32%	44.32%	43.38%
		W34/170	25.66	17.16	33.13%					
R19/170		W35/170	14.08	9.65	31.46%	6.41	3.85	39.84%	51.01%	43.88%
		W36/170	18.12	12.53	30.85%					
		W37/170	16.03	11.15	30.44%					
R20/170		W38/170	21.09	17.99	14.70%	2.28	2.04	10.40%	85.76%	4.01%
R21/170		W39/170	24.90	21.21	14.82%	4.58	3.33	27.23%	89.37%	7.18%
		W40/170	20.51	17.02	17.02%					
R22/170		W41/170	23.45	15.17	35.31%	1.78	1.27	28.71%	51.76%	25.57%
1st Floor										
R2/171		W4/171	30.30	26.97	10.99%	1.06	0.98	6.82%	94.46%	0.00%
R3/171		W5/171	22.03	18.31	16.89%	0.82	0.76	6.73%	89.41%	0.00%
R4/171		W6/171	33.01	29.23	>27	3.95	3.62	8.24%	98.21%	0.00%
		W7/171	32.52	28.90	>27					
R5/171		W8/171	29.76	26.60	10.62%	3.85	3.57	7.05%	98.66%	0.00%
		W9/171	25.25	22.98	8.99%					
R6/171		W10/171	18.01	16.65	7.55%	1.22	1.21	1.31%	95.84%	2.01%
R7/171		W11/171	16.42	13.80	15.96%	0.63	0.58	8.99%	71.60%	0.00%
R8/171		W12/171	15.13	15.13	0.00%	0.62	0.62	0.00%	72.52%	0.34%

Room/Floor	Room Use	Window	%VSC			% Daylight Factor			Proposed No Sky	
			Exist	Prop	% Loss	Exist	Prop	% Loss	% of Room Area	% Loss of Existing
R9/171		W13/171	33.02	29.62	>27	3.64	3.32	8.66%	98.10%	0.00%
		W14/171	33.99	30.42	>27					
R10/171		W15/171	34.67	30.81	>27	3.68	3.32	9.60%	98.29%	0.36%
		W16/171	34.76	30.78	>27					
R11/171		W17/171	34.76	30.60	>27	3.69	3.29	10.75%	98.01%	0.64%
		W18/171	34.66	30.33	>27					
R12/171		W19/171	34.10	29.62	>27	3.54	3.13	11.54%	98.10%	0.35%
		W20/171	32.57	28.20	>27					
R13/171		W21/171	35.59	32.99	>27	4.27	3.68	13.81%	98.93%	1.07%
		W22/171	33.44	27.78	>27					
		W23/171	33.30	27.28	>27					
		W24/171	33.06	26.82	18.87%					
		W25/171	30.22	21.63	28.42%					
R14/171		W26/171	14.97	10.98	26.65%	0.67	0.54	18.92%	46.73%	40.80%
R15/171		W27/171	16.45	11.71	28.81%	0.67	0.52	21.80%	44.02%	41.96%
R16/171		W28/171	30.03	20.96	30.20%	3.35	2.53	24.54%	54.28%	44.97%
		W29/171	30.05	20.89	30.48%					
R17/171		W30/171	29.98	20.82	30.55%	3.32	2.50	24.61%	53.78%	45.49%
		W31/171	29.93	20.80	30.50%					
R18/171		W32/171	29.88	20.69	30.76%	3.33	2.50	24.72%	53.33%	45.69%
		W33/171	29.76	20.60	30.78%					
R19/171		W34/171	25.64	18.64	27.30%	4.76	3.78	20.73%	58.80%	40.67%
R20/171		W35/171	25.68	22.50	12.38%	2.62	2.38	9.24%	93.30%	1.91%
R21/171		W36/171	30.86	26.87	12.93%	3.64	3.27	10.20%	90.44%	6.40%
2nd Floor										
R1/172		W1/172	32.99	24.11	26.92%	3.38	2.64	21.91%	74.23%	24.82%
		W2/172	33.02	24.06	27.14%					
R2/172		W3/172	32.96	24.01	27.15%	3.36	2.62	21.84%	74.55%	24.29%
		W4/172	32.92	24.01	27.07%					
R3/172		W5/172	32.89	23.92	27.27%	3.35	2.61	22.06%	73.51%	24.58%
		W6/172	32.86	23.86	27.39%					
R4/172		W7/172	19.06	14.65	23.14%	0.39	0.34	13.59%	33.25%	25.79%
R5/172		W8/172	32.80	25.01	23.75%	0.52	0.43	17.02%	55.66%	35.52%
58-74 HAVERSTOCK ROAD BA81/30/BRE/135										
2nd Floor										
R1/182	BEDROOM	W1/182	36.01	19.27	46.49%	4.35	2.66	38.94%	63.62%	35.71%
R2/182	BEDROOM	W2/182	36.01	17.47	51.49%	4.31	2.42	43.95%	39.38%	60.21%
R3/182	BEDROOM	W3/182	36.14	16.49	54.37%	4.33	2.33	46.12%	40.32%	59.26%
R4/182	BEDROOM	W4/182	36.29	15.48	57.34%	4.34	2.20	49.32%	36.18%	63.48%
R5/182	BEDROOM	W5/182	36.29	14.92	58.89%	4.34	2.15	50.52%	38.99%	60.64%
R6/182	BEDROOM	W6/182	36.32	14.45	60.21%	4.36	2.09	52.01%	38.48%	61.12%
R7/182	BEDROOM	W7/182	36.36	14.11	61.19%	4.36	2.06	52.65%	39.98%	59.60%
R8/182	BEDROOM	W8/182	36.38	13.83	61.98%	4.36	2.02	53.58%	38.40%	61.20%
R9/182	BEDROOM	W9/182	36.37	13.68	62.39%	4.36	2.00	53.99%	52.82%	46.68%
R10/182	BEDROOM	W10/182	36.32	13.60	62.56%	4.39	1.99	54.54%	36.37%	63.24%
R11/182	BEDROOM	W11/182	36.30	13.62	62.48%	4.37	2.00	54.17%	36.29%	63.43%
R12/182	BEDROOM	W12/182	36.21	13.94	61.50%	4.31	2.04	52.64%	51.30%	48.17%
R13/182	BEDROOM	W13/182	36.14	14.70	59.32%	4.33	2.11	51.12%	47.65%	51.89%
R14/182	BEDROOM	W14/182	35.99	15.99	55.57%	4.32	2.26	47.63%	77.07%	22.13%
R15/182	BEDROOM	W15/182	35.85	17.02	52.52%	4.29	2.37	44.78%	73.48%	25.76%
R16/182	BEDROOM	W16/182	35.60	17.98	49.49%	4.28	2.49	41.70%	98.87%	0.00%
R17/182	BEDROOM	W17/182	35.43	18.29	48.38%	4.26	2.52	40.95%	90.30%	8.75%
R18/182	BEDROOM	W18/182	35.04	18.47	47.29%	4.20	2.52	39.90%	97.29%	1.61%
R19/182	BEDROOM	W19/182	34.74	18.43	46.95%	4.17	2.51	39.85%	98.97%	0.00%
R20/182	BEDROOM	W20/182	34.27	18.09	47.21%	4.16	2.51	39.52%	86.67%	12.33%

Room/Floor	Room Use	Window	%VSC			% Daylight Factor			Proposed No Sky	
			Exist	Prop	% Loss	Exist	Prop	% Loss	% of Room Area	% Loss of Existing
3rd Floor										
R1/183		W1/183	36.27	20.05	44.72%	3.55	2.06	42.04%	54.92%	43.46%
		W2/183	28.70	16.67	41.92%					
R2/183		W3/183	36.34	18.29	49.67%	3.57	1.93	45.99%	46.65%	51.90%
		W4/183	28.78	15.16	47.32%					
R3/183		W5/183	28.54	12.26	57.04%	3.53	1.79	49.32%	69.58%	28.94%
		W6/183	36.15	17.07	52.78%					
R4/183		W7/183	36.20	16.54	54.31%	3.58	1.80	49.75%	50.28%	47.97%
		W8/183	28.82	13.41	53.47%					
R5/183		W9/183	28.39	12.57	55.72%	3.58	1.77	50.49%	62.63%	36.19%
		W10/183	35.98	15.92	55.75%					
R6/183		W11/183	36.01	16.49	54.21%	3.58	1.81	49.47%	72.66%	24.47%
		W12/183	28.89	13.12	54.59%					
R7/183		W13/183	28.05	13.65	51.34%	3.55	1.87	47.18%	60.57%	38.21%
		W14/183	35.73	17.28	51.64%					
R8/183		W15/183	35.64	19.44	45.45%	3.55	2.07	41.74%	83.00%	13.05%
		W16/183	28.84	17.31	39.98%					
R9/183		W17/183	27.51	16.85	38.75%	3.50	2.09	40.44%	77.91%	20.49%
		W18/183	35.26	19.66	44.24%					
R10/183		W19/183	27.15	16.81	38.08%	3.44	2.07	39.94%	82.92%	15.28%
		W20/183	34.92	19.61	43.84%					
1-120 HAVERSTOCK ROAD BA81/30/BRE/136,137										
2nd Floor										
R1/212	LIVINGROOM	W1/212	14.06	14.06	0.00%	7.71	6.05	21.58%	99.03%	0.00%
		W2/212	12.71	12.71	0.00%					
		W3/212	36.95	27.69	>27					
		W4/212	36.82	26.60	27.76%					
		W5/212	36.64	25.59	30.16%					
R2/212	KITCHEN	W6/212	36.55	24.76	32.26%	2.86	2.03	28.98%	66.83%	32.44%
R5/212	KITCHEN	W11/212	36.11	22.75	37.00%	2.85	1.92	32.62%	70.12%	29.11%
R6/212	LIVINGROOM	W12/212	35.93	22.69	36.85%	7.43	4.94	33.54%	99.02%	0.06%
		W13/212	35.74	23.03	35.56%					
		W14/212	35.55	23.22	34.68%					
		W15/212	11.08	7.17	35.29%					
R7/212	BEDROOM	W16/212	12.40	8.77	29.27%	5.50	4.94	10.30%	99.10%	0.00%
W17/212	37.30	33.03	>27							
R8/212	LIVINGROOM	W18/212	9.95	7.37	25.93%	3.03	2.01	33.51%	99.60%	0.05%
		W19/212	16.93	13.78	18.61%					
		W20/212	9.47	6.28	33.69%					
R9/212	BEDROOM	W21/212	37.20	33.91	>27	5.41	4.98	7.93%	98.31%	0.00%
R10/212	LIVINGROOM	W22/212	13.21	11.22	15.06%	8.07	7.34	9.09%	99.41%	0.00%
		W23/212	11.37	9.02	20.67%					
		W24/212	39.30	39.26	>27					
		W25/212	39.30	39.27	>27					
		W26/212	39.30	39.27	>27					
R11/212	KITCHEN	W27/212	39.29	39.26	>27	3.10	3.10	0.00%	99.02%	0.00%

Room/Floor	Room Use	Window	%VSC			% Daylight Factor			Proposed No Sky	
			Exist	Prop	% Loss	Exist	Prop	% Loss	% of Room Area	% Loss of Existing
3rd Floor										
R1/213	LIVINGROOM	W1/213	14.17	14.17	0.00%	7.95	6.32	20.60%	99.03%	0.00%
		W2/213	12.83	12.83	0.00%					
		W3/213	38.77	29.81	>27					
		W4/213	38.76	28.89	>27					
		W5/213	38.72	28.03	>27					
R2/213	KITCHEN	W6/213	38.74	27.36	>27	3.01	2.20	26.78%	68.77%	30.48%
R5/213	KITCHEN	W11/213	38.65	26.08	32.52%	3.03	2.15	29.02%	71.93%	27.28%
R6/213	LIVINGROOM	W12/213	38.63	26.13	32.36%	7.95	5.61	29.42%	99.08%	0.00%
		W13/213	38.57	26.49	31.32%					
		W14/213	38.51	26.76	30.51%					
		W15/213	12.55	8.94	28.76%					
		W16/213	13.79	10.44	24.29%					
R7/213	BEDROOM	W17/213	38.67	35.17	>27	5.68	5.21	8.39%	99.10%	0.00%
R8/213	LIVINGROOM	W18/213	10.80	8.73	19.17%	3.20	2.30	28.11%	99.64%	0.00%
		W19/213	18.01	15.39	14.55%					
		W20/213	10.55	7.88	25.31%					
R9/213	BEDROOM	W21/213	38.31	35.61	>27	5.55	5.19	6.47%	99.11%	0.00%
R10/213	LIVINGROOM	W22/213	13.93	12.22	12.28%	8.16	7.49	8.32%	99.41%	0.00%
		W23/213	12.21	10.26	15.97%					
		W24/213	39.32	39.29	>27					
		W25/213	39.32	39.29	>27					
		W26/213	39.32	39.29	>27					
R11/213	KITCHEN	W27/213	39.31	39.29	>27	3.09	3.09	0.00%	99.02%	0.00%
4th Floor										
R1/214	LIVINGROOM	W1/214	14.24	14.24	0.00%	8.02	6.65	17.11%	99.03%	0.00%
		W2/214	12.88	12.88	0.00%					
		W3/214	39.01	32.16	>27					
		W4/214	39.01	31.45	>27					
		W5/214	38.98	30.80	>27					
R2/214	KITCHEN	W6/214	39.00	30.31	>27	3.04	2.42	20.54%	74.21%	24.97%
R5/214	KITCHEN	W11/214	38.94	29.70	>27	3.07	2.41	21.29%	76.75%	22.41%
R6/214	LIVINGROOM	W12/214	38.92	29.85	>27	8.04	6.31	21.52%	99.08%	0.00%
		W13/214	38.87	30.24	>27					
		W14/214	38.82	30.58	>27					
		W15/214	12.75	10.85	14.90%					
		W16/214	14.07	12.16	13.57%					
R7/214	BEDROOM	W17/214	38.86	37.04	>27	5.73	5.48	4.46%	99.10%	0.00%
R8/214	LIVINGROOM	W18/214	10.96	9.85	10.13%	3.24	2.53	22.02%	99.64%	0.00%
		W19/214	18.27	16.74	8.37%					
		W20/214	10.74	9.29	13.50%					
R9/214	BEDROOM	W21/214	38.51	37.04	>27	5.60	5.40	3.57%	99.11%	0.00%
R10/214	LIVINGROOM	W22/214	14.10	13.12	6.95%	8.22	7.64	7.02%	99.41%	0.00%
		W23/214	12.38	11.31	8.64%					
		W24/214	39.32	39.31	>27					
		W25/214	39.32	39.31	>27					
		W26/214	39.32	39.31	>27					
R11/214	KITCHEN	W27/214	39.31	39.30	>27	3.11	3.11	0.00%	99.02%	0.00%

Room/Floor	Room Use	Window	%VSC			% Daylight Factor			Proposed No Sky	
			Exist	Prop	% Loss	Exist	Prop	% Loss	% of Room Area	% Loss of Existing
5th Floor										
R1/215	LIVINGROOM	W1/215	14.25	14.25	0.00%	8.00	6.85	14.31%	99.03%	0.00%
		W2/215	12.90	12.90	0.00%					
		W3/215	39.07	33.98	>27					
		W4/215	39.07	33.47	>27					
		W5/215	39.04	32.99	>27					
R2/215	KITCHEN	W6/215	39.06	32.64	>27	3.04	2.57	15.48%	82.08%	17.01%
R5/215	KITCHEN	W11/215	39.01	32.47	>27	3.06	2.59	15.36%	82.77%	16.32%
R6/215	LIVINGROOM	W12/215	38.98	32.66	>27	8.03	6.77	15.64%	99.08%	0.00%
		W13/215	38.94	32.99	>27					
		W14/215	38.89	33.31	>27					
		W15/215	12.78	12.24	4.23%					
		W16/215	14.10	13.46	4.54%					
R7/215	BEDROOM	W17/215	38.89	38.37	>27	5.72	5.64	1.31%	99.10%	0.00%
R8/215	LIVINGROOM	W18/215	10.98	10.73	2.28%	3.24	2.68	17.35%	99.64%	0.00%
		W19/215	18.29	17.79	2.73%					
		W20/215	10.77	10.30	4.36%					
R9/215	BEDROOM	W21/215	38.54	38.09	>27	5.59	5.52	1.15%	99.11%	0.00%
R10/215	LIVINGROOM	W22/215	14.10	13.80	2.13%	8.20	7.71	5.89%	99.41%	0.00%
		W23/215	12.40	12.10	2.42%					
		W24/215	39.32	39.32	>27					
		W25/215	39.32	39.32	>27					
		W26/215	39.32	39.32	>27					
R11/215	KITCHEN	W27/215	39.31	39.30	>27	3.09	3.09	0.00%	99.02%	0.00%
6th Floor										
R1/216	LIVINGROOM	W1/216	14.27	14.27	0.00%	8.01	7.05	11.97%	99.08%	-0.06%
		W2/216	12.92	12.92	0.00%					
		W3/216	39.13	35.42	>27					
		W4/216	39.13	35.07	>27					
		W5/216	39.11	34.76	>27					
R2/216	KITCHEN	W6/216	39.12	34.51	>27	3.04	2.70	11.18%	95.16%	3.79%
R5/216	KITCHEN	W11/216	39.07	34.42	>27	3.06	2.72	11.10%	94.46%	4.51%
R6/216	LIVINGROOM	W12/216	39.05	34.56	>27	8.04	7.04	12.49%	99.08%	0.00%
		W13/216	39.01	34.78	>27					
		W14/216	38.95	34.99	>27					
		W15/216	12.81	12.64	1.33%					
		W16/216	14.13	13.95	1.27%					
R7/216	BEDROOM	W17/216	38.92	38.76	>27	5.73	5.70	0.40%	99.10%	0.00%
R8/216	LIVINGROOM	W18/216	11.01	11.00	0.09%	3.25	2.73	15.99%	99.64%	0.00%
		W19/216	18.32	18.22	0.55%					
		W20/216	10.79	10.65	1.30%					
R9/216	BEDROOM	W21/216	38.58	38.45	>27	5.59	5.57	0.34%	99.11%	0.00%
R10/216	LIVINGROOM	W22/216	14.10	14.08	0.14%	8.20	7.74	5.55%	99.41%	0.00%
		W23/216	12.43	12.38	0.40%					
		W24/216	39.32	39.32	>27					
		W25/216	39.32	39.32	>27					
		W26/216	39.32	39.32	>27					
R11/216	KITCHEN	W27/216	39.31	39.31	>27	3.10	3.10	0.00%	99.02%	0.00%

Room/Floor	Room Use	Window	%VSC			% Daylight Factor			Proposed No Sky	
			Exist	Prop	% Loss	Exist	Prop	% Loss	% of Room Area	% Loss of Existing
7th Floor										
R1/217	LIVINGROOM	W1/217	14.28	14.28	0.00%	8.02	7.24	9.72%	99.08%	-0.06%
		W2/217	12.93	12.93	0.00%					
		W3/217	39.19	36.77	>27					
		W4/217	39.19	36.60	>27					
		W5/217	39.17	36.43	>27					
R2/217	KITCHEN	W6/217	39.18	36.29	>27	3.04	2.83	7.03%	98.91%	0.00%
R5/217	KITCHEN	W11/217	39.14	36.24	>27	3.07	2.85	7.08%	98.92%	0.00%
R6/217	LIVINGROOM	W12/217	39.11	36.32	>27	8.06	7.26	9.92%	99.08%	0.00%
		W13/217	39.07	36.41	>27					
		W14/217	39.02	36.52	>27					
		W15/217	12.84	12.75	0.70%					
		W16/217	14.16	14.07	0.64%					
R7/217	BEDROOM	W17/217	38.95	38.87	>27	5.73	5.72	0.21%	99.10%	0.00%
R8/217	LIVINGROOM	W18/217	11.04	11.04	0.00%	3.25	2.74	15.73%	99.64%	0.00%
		W19/217	18.35	18.31	0.22%					
		W20/217	10.82	10.75	0.65%					
R9/217	BEDROOM	W21/217	38.61	38.54	>27	5.59	5.58	0.18%	99.11%	0.00%
R10/217	LIVINGROOM	W22/217	14.10	14.09	0.07%	8.20	7.75	5.54%	99.41%	0.00%
		W23/217	12.45	12.44	0.08%					
		W24/217	39.32	39.32	>27					
		W25/217	39.32	39.32	>27					
		W26/217	39.32	39.32	>27					
R11/217	KITCHEN	W27/217	39.31	39.31	>27	3.10	3.10	0.00%	99.02%	0.00%
8th Floor										
R1/218	LIVINGROOM	W1/218	14.30	14.30	0.00%	7.95	7.33	7.77%	99.08%	-0.06%
		W2/218	12.95	12.95	0.00%					
		W3/218	39.25	37.96	>27					
		W4/218	39.24	37.88	>27					
		W5/218	39.23	37.81	>27					
R2/218	KITCHEN	W6/218	39.23	37.76	>27	3.01	2.90	3.65%	98.91%	0.00%
R5/218	KITCHEN	W11/218	39.20	37.76	>27	3.04	2.93	3.59%	98.92%	0.00%
R6/218	LIVINGROOM	W12/218	39.17	37.78	>27	7.99	7.38	7.71%	99.08%	0.00%
		W13/218	39.13	37.80	>27					
		W14/218	39.08	37.81	>27					
		W15/218	12.87	12.85	0.16%					
		W16/218	14.19	14.17	0.14%					
R7/218	BEDROOM	W17/218	38.97	38.96	>27	5.67	5.67	0.04%	99.10%	0.00%
R8/218	LIVINGROOM	W18/218	11.07	11.07	0.00%	3.23	2.72	15.59%	99.64%	0.00%
		W19/218	18.38	18.37	0.05%					
		W20/218	10.85	10.83	0.18%					
R9/218	BEDROOM	W21/218	38.63	38.62	>27	5.54	5.54	0.04%	99.11%	0.00%
R10/218	LIVINGROOM	W22/218	14.10	14.10	0.00%	8.13	7.68	5.51%	99.41%	0.00%
		W23/218	12.48	12.48	0.00%					
		W24/218	39.32	39.32	>27					
		W25/218	39.32	39.32	>27					
		W26/218	39.32	39.32	>27					
R11/218	KITCHEN	W27/218	39.31	39.31	>27	3.06	3.06	0.00%	99.02%	0.00%

BA81 - BACTON LOW RISE
23-Sep-16
JOB 30 - SUNLIGHT RESULTS

Available sunlight as a percentage of
annual unobstructed total (1486.0 Hrs)

Room use	Window Ref	Existing %			Proposed %			% Loss of Summer	% Loss of Winter	% Loss of Total
		Summer	Winter	Total	Summer	Winter	Total			
113 WELLESLEY ROAD BA81/30/BRE/131										
Gnd Floor										
W1/10		49.00	21.00	70.00	43.00	17.00	60.00	12.24%	19.05%	14.29%
W18/10		36.00	16.00	52.00	16.00	11.00	27.00	55.56%	31.25%	48.08%
W17/10		37.00	17.00	54.00	17.00	9.00	26.00	54.05%	47.06%	51.85%
1st Floor										
W1/11		50.00	23.00	73.00	46.00	17.00	63.00	8.00%	26.09%	13.70%
W24/11		38.00	19.00	57.00	19.00	11.00	30.00	50.00%	42.11%	47.37%
W23/11		38.00	20.00	58.00	22.00	10.00	32.00	42.11%	50.00%	44.83%
2nd Floor										
W1/12		50.00	24.00	74.00	49.00	17.00	66.00	2.00%	29.17%	10.81%
W19/12		39.00	21.00	60.00	25.00	13.00	38.00	35.90%	38.10%	36.67%
W17/12		39.00	21.00	60.00	27.00	11.00	38.00	30.77%	47.62%	36.67%
W18/12		39.00	21.00	60.00	25.00	12.00	37.00	35.90%	42.86%	38.33%
24 VICAR'S ROAD BA81/30/BRE/131										
Gnd Floor										
W5/10		49.00	20.00	69.00	48.00	16.00	64.00	2.04%	20.00%	7.25%
W6/10		45.00	16.00	61.00	45.00	13.00	58.00	0.00%	18.75%	4.92%
W7/10		49.00	18.00	67.00	49.00	14.00	63.00	0.00%	22.22%	5.97%
1st Floor										
W3/11		49.00	23.00	72.00	49.00	21.00	70.00	0.00%	8.70%	2.78%
W4/11		50.00	21.00	71.00	50.00	19.00	69.00	0.00%	9.52%	2.82%
W5/11		49.00	19.00	68.00	49.00	17.00	66.00	0.00%	10.53%	2.94%
W7/11		51.00	20.00	71.00	51.00	18.00	69.00	0.00%	10.00%	2.82%
2nd Floor										
W3/12		50.00	24.00	74.00	50.00	22.00	72.00	0.00%	8.33%	2.70%
W4/12		50.00	24.00	74.00	50.00	22.00	72.00	0.00%	8.33%	2.70%
W5/12		51.00	23.00	74.00	51.00	20.00	71.00	0.00%	13.04%	4.05%
W6/12		53.00	21.00	74.00	53.00	20.00	73.00	0.00%	4.76%	1.35%
3rd Floor										
W1/13		52.00	24.00	76.00	52.00	22.00	74.00	0.00%	8.33%	2.63%
W2/13		50.00	24.00	74.00	50.00	22.00	72.00	0.00%	8.33%	2.70%
W3/13		52.00	25.00	77.00	52.00	24.00	76.00	0.00%	4.00%	1.30%
W4/13		53.00	22.00	75.00	53.00	21.00	74.00	0.00%	4.55%	1.33%



Room use	Window Ref	Existing %			Proposed %			% Loss of Summer	% Loss of Winter	% Loss of Total
		Summer	Winter	Total	Summer	Winter	Total			
2-104 WELLESLEY ROAD BA81/30/BRE/132,133										
Gnd Floor										
W1/150		23.00	15.00	38.00	10.00	11.00	21.00	56.52%	26.67%	44.74%
W2/150		26.00	18.00	44.00	13.00	14.00	27.00	50.00%	22.22%	38.64%
W3/150		23.00	15.00	38.00	10.00	11.00	21.00	56.52%	26.67%	44.74%
W4/150		26.00	18.00	44.00	13.00	14.00	27.00	50.00%	22.22%	38.64%
W5/150		23.00	15.00	38.00	10.00	11.00	21.00	56.52%	26.67%	44.74%
W7/150		24.00	15.00	39.00	12.00	12.00	24.00	50.00%	20.00%	38.46%
W8/150		27.00	18.00	45.00	15.00	15.00	30.00	44.44%	16.67%	33.33%
W9/150		25.00	15.00	40.00	11.00	12.00	23.00	56.00%	20.00%	42.50%
W10/150		28.00	18.00	46.00	14.00	15.00	29.00	50.00%	16.67%	36.96%
W11/150		25.00	16.00	41.00	12.00	13.00	25.00	52.00%	18.75%	39.02%
W12/150		25.00	16.00	41.00	13.00	13.00	26.00	48.00%	18.75%	36.59%
W13/150		28.00	19.00	47.00	17.00	17.00	34.00	39.29%	10.53%	27.66%
W14/150		25.00	15.00	40.00	13.00	13.00	26.00	48.00%	13.33%	35.00%
W15/150		28.00	19.00	47.00	17.00	18.00	35.00	39.29%	5.26%	25.53%
W16/150		26.00	16.00	42.00	16.00	16.00	32.00	38.46%	0.00%	23.81%
W6/150		26.00	17.00	43.00	17.00	16.00	33.00	34.62%	5.88%	23.26%
W17/150		29.00	20.00	49.00	20.00	19.00	39.00	31.03%	5.00%	20.41%
W18/150		26.00	18.00	44.00	18.00	16.00	34.00	30.77%	11.11%	22.73%
W19/150		29.00	21.00	50.00	21.00	19.00	40.00	27.59%	9.52%	20.00%
W20/150		26.00	18.00	44.00	18.00	16.00	34.00	30.77%	11.11%	22.73%
W21/150		26.00	18.00	44.00	19.00	16.00	35.00	26.92%	11.11%	20.45%
W22/150		29.00	21.00	50.00	22.00	21.00	43.00	24.14%	0.00%	14.00%
W23/150		26.00	18.00	44.00	20.00	18.00	38.00	23.08%	0.00%	13.64%
W24/150		29.00	21.00	50.00	23.00	21.00	44.00	20.69%	0.00%	12.00%
W25/150		27.00	18.00	45.00	20.00	18.00	38.00	25.93%	0.00%	15.56%
W26/150		28.00	18.00	46.00	23.00	18.00	41.00	17.86%	0.00%	10.87%
W27/150		31.00	21.00	52.00	26.00	21.00	47.00	16.13%	0.00%	9.62%
W28/150		31.00	21.00	52.00	26.00	21.00	47.00	16.13%	0.00%	9.62%
W29/150		28.00	18.00	46.00	24.00	18.00	42.00	14.29%	0.00%	8.70%
W30/150		28.00	18.00	46.00	24.00	18.00	42.00	14.29%	0.00%	8.70%
W31/150		31.00	21.00	52.00	27.00	21.00	48.00	12.90%	0.00%	7.69%
W32/150		28.00	18.00	46.00	24.00	18.00	42.00	14.29%	0.00%	8.70%
W33/150		31.00	21.00	52.00	27.00	21.00	48.00	12.90%	0.00%	7.69%
W34/150		28.00	18.00	46.00	24.00	18.00	42.00	14.29%	0.00%	8.70%
1st Floor										
W1/151		25.00	15.00	40.00	11.00	11.00	22.00	56.00%	26.67%	45.00%
W2/151		28.00	18.00	46.00	14.00	14.00	28.00	50.00%	22.22%	39.13%
W3/151		26.00	15.00	41.00	12.00	11.00	23.00	53.85%	26.67%	43.90%
W4/151		29.00	18.00	47.00	15.00	14.00	29.00	48.28%	22.22%	38.30%
W5/151		26.00	15.00	41.00	12.00	11.00	23.00	53.85%	26.67%	43.90%
W8/151		26.00	15.00	41.00	13.00	12.00	25.00	50.00%	20.00%	39.02%
W9/151		29.00	18.00	47.00	16.00	15.00	31.00	44.83%	16.67%	34.04%
W10/151		26.00	15.00	41.00	14.00	12.00	26.00	46.15%	20.00%	36.59%
W11/151		29.00	19.00	48.00	17.00	15.00	32.00	41.38%	21.05%	33.33%
W12/151		26.00	16.00	42.00	15.00	13.00	28.00	42.31%	18.75%	33.33%
W13/151		27.00	16.00	43.00	15.00	13.00	28.00	44.44%	18.75%	34.88%
W14/151		30.00	19.00	49.00	18.00	17.00	35.00	40.00%	10.53%	28.57%
W15/151		27.00	17.00	44.00	16.00	15.00	31.00	40.74%	11.76%	29.55%
W16/151		30.00	20.00	50.00	19.00	18.00	37.00	36.67%	10.00%	26.00%
W17/151		28.00	17.00	45.00	17.00	16.00	33.00	39.29%	5.88%	26.67%
W20/151		28.00	17.00	45.00	18.00	16.00	34.00	35.71%	5.88%	24.44%



Room use	Window Ref	Existing %			Proposed %			% Loss of Summer	% Loss of Winter	% Loss of Total
		Summer	Winter	Total	Summer	Winter	Total			
W21/151		31.00	20.00	51.00	21.00	19.00	40.00	32.26%	5.00%	21.57%
W22/151		28.00	17.00	45.00	18.00	16.00	34.00	35.71%	5.88%	24.44%
W23/151		31.00	21.00	52.00	21.00	19.00	40.00	32.26%	9.52%	23.08%
W24/151		28.00	18.00	46.00	19.00	16.00	35.00	32.14%	11.11%	23.91%
W25/151		28.00	18.00	46.00	19.00	16.00	35.00	32.14%	11.11%	23.91%
W26/151		31.00	21.00	52.00	22.00	20.00	42.00	29.03%	4.76%	19.23%
W27/151		28.00	18.00	46.00	20.00	18.00	38.00	28.57%	0.00%	17.39%
W28/151		31.00	21.00	52.00	25.00	21.00	46.00	19.35%	0.00%	11.54%
W29/151		28.00	18.00	46.00	22.00	18.00	40.00	21.43%	0.00%	13.04%
W32/151		28.00	18.00	46.00	23.00	18.00	41.00	17.86%	0.00%	10.87%
W33/151		31.00	21.00	52.00	26.00	21.00	47.00	16.13%	0.00%	9.62%
W34/151		28.00	18.00	46.00	24.00	18.00	42.00	14.29%	0.00%	8.70%
W35/151		31.00	21.00	52.00	27.00	21.00	48.00	12.90%	0.00%	7.69%
W36/151		29.00	18.00	47.00	24.00	18.00	42.00	17.24%	0.00%	10.64%
W37/151		29.00	18.00	47.00	24.00	18.00	42.00	17.24%	0.00%	10.64%
W38/151		32.00	21.00	53.00	27.00	21.00	48.00	15.63%	0.00%	9.43%
W39/151		30.00	18.00	48.00	24.00	18.00	42.00	20.00%	0.00%	12.50%
W40/151		32.00	21.00	53.00	27.00	21.00	48.00	15.63%	0.00%	9.43%
W41/151		30.00	18.00	48.00	25.00	18.00	43.00	16.67%	0.00%	10.42%
2nd Floor										
W1/152		28.00	17.00	45.00	13.00	12.00	25.00	53.57%	29.41%	44.44%
W2/152		31.00	19.00	50.00	17.00	14.00	31.00	45.16%	26.32%	38.00%
W3/152		28.00	17.00	45.00	14.00	12.00	26.00	50.00%	29.41%	42.22%
W4/152		28.00	17.00	45.00	14.00	12.00	26.00	50.00%	29.41%	42.22%
W5/152		28.00	17.00	45.00	14.00	12.00	26.00	50.00%	29.41%	42.22%
W8/152		28.00	17.00	45.00	15.00	13.00	28.00	46.43%	23.53%	37.78%
W9/152		28.00	17.00	45.00	15.00	13.00	28.00	46.43%	23.53%	37.78%
W10/152		28.00	17.00	45.00	17.00	13.00	30.00	39.29%	23.53%	33.33%
W11/152		31.00	20.00	51.00	19.00	16.00	35.00	38.71%	20.00%	31.37%
W12/152		28.00	18.00	46.00	16.00	14.00	30.00	42.86%	22.22%	34.78%
W13/152		28.00	18.00	46.00	16.00	14.00	30.00	42.86%	22.22%	34.78%
W14/152		31.00	20.00	51.00	20.00	18.00	38.00	35.48%	10.00%	25.49%
W15/152		29.00	18.00	47.00	18.00	16.00	34.00	37.93%	11.11%	27.66%
W16/152		29.00	18.00	47.00	18.00	16.00	34.00	37.93%	11.11%	27.66%
W17/152		29.00	18.00	47.00	18.00	17.00	35.00	37.93%	5.56%	25.53%
W20/152		29.00	18.00	47.00	18.00	17.00	35.00	37.93%	5.56%	25.53%
W21/152		30.00	18.00	48.00	18.00	17.00	35.00	40.00%	5.56%	27.08%
W22/152		30.00	18.00	48.00	19.00	17.00	36.00	36.67%	5.56%	25.00%
W23/152		32.00	21.00	53.00	22.00	19.00	41.00	31.25%	9.52%	22.64%
W24/152		30.00	19.00	49.00	19.00	17.00	36.00	36.67%	10.53%	26.53%
W25/152		30.00	19.00	49.00	20.00	17.00	37.00	33.33%	10.53%	24.49%
W26/152		33.00	21.00	54.00	25.00	20.00	45.00	24.24%	4.76%	16.67%
W27/152		30.00	19.00	49.00	22.00	19.00	41.00	26.67%	0.00%	16.33%
W28/152		30.00	19.00	49.00	23.00	19.00	42.00	23.33%	0.00%	14.29%
W29/152		30.00	19.00	49.00	23.00	19.00	42.00	23.33%	0.00%	14.29%
W32/152		30.00	19.00	49.00	24.00	19.00	43.00	20.00%	0.00%	12.24%
W33/152		30.00	19.00	49.00	24.00	19.00	43.00	20.00%	0.00%	12.24%
W34/152		30.00	19.00	49.00	24.00	19.00	43.00	20.00%	0.00%	12.24%
W35/152		33.00	21.00	54.00	27.00	21.00	48.00	18.18%	0.00%	11.11%
W36/152		30.00	19.00	49.00	24.00	19.00	43.00	20.00%	0.00%	12.24%
W37/152		30.00	19.00	49.00	24.00	19.00	43.00	20.00%	0.00%	12.24%
W38/152		33.00	21.00	54.00	27.00	21.00	48.00	18.18%	0.00%	11.11%
W39/152		30.00	19.00	49.00	24.00	19.00	43.00	20.00%	0.00%	12.24%
W40/152		30.00	19.00	49.00	24.00	19.00	43.00	20.00%	0.00%	12.24%
W41/152		30.00	20.00	50.00	27.00	20.00	47.00	10.00%	0.00%	6.00%



Room use	Window Ref	Existing %			Proposed %			% Loss of Summer	% Loss of Winter	% Loss of Total
		Summer	Winter	Total	Summer	Winter	Total			
3rd Floor										
W1/153		41.00	21.00	62.00	28.00	16.00	44.00	31.71%	23.81%	29.03%
W2/153		41.00	21.00	62.00	28.00	16.00	44.00	31.71%	23.81%	29.03%
W3/153		41.00	22.00	63.00	28.00	16.00	44.00	31.71%	27.27%	30.16%
W4/153		41.00	22.00	63.00	28.00	16.00	44.00	31.71%	27.27%	30.16%
W5/153		41.00	21.00	62.00	28.00	16.00	44.00	31.71%	23.81%	29.03%
W6/153		41.00	22.00	63.00	29.00	16.00	45.00	29.27%	27.27%	28.57%
W9/153		41.00	22.00	63.00	29.00	17.00	46.00	29.27%	22.73%	26.98%
W10/153		41.00	22.00	63.00	29.00	18.00	47.00	29.27%	18.18%	25.40%
W11/153		41.00	22.00	63.00	29.00	17.00	46.00	29.27%	22.73%	26.98%
W12/153		41.00	22.00	63.00	29.00	17.00	46.00	29.27%	22.73%	26.98%
W13/153		41.00	22.00	63.00	29.00	18.00	47.00	29.27%	18.18%	25.40%
W14/153		41.00	23.00	64.00	29.00	20.00	49.00	29.27%	13.04%	23.44%
W15/153		41.00	23.00	64.00	30.00	20.00	50.00	26.83%	13.04%	21.88%
W16/153		41.00	22.00	63.00	30.00	20.00	50.00	26.83%	9.09%	20.63%
W17/153		41.00	23.00	64.00	30.00	20.00	50.00	26.83%	13.04%	21.88%
W18/153		41.00	23.00	64.00	30.00	20.00	50.00	26.83%	13.04%	21.88%
W19/153		41.00	23.00	64.00	30.00	21.00	51.00	26.83%	8.70%	20.31%
W20/153		41.00	23.00	64.00	30.00	21.00	51.00	26.83%	8.70%	20.31%
W23/153		41.00	23.00	64.00	31.00	21.00	52.00	24.39%	8.70%	18.75%
W24/153		41.00	23.00	64.00	31.00	21.00	52.00	24.39%	8.70%	18.75%
W25/153		41.00	23.00	64.00	31.00	21.00	52.00	24.39%	8.70%	18.75%
W26/153		41.00	23.00	64.00	31.00	21.00	52.00	24.39%	8.70%	18.75%
W27/153		41.00	23.00	64.00	31.00	21.00	52.00	24.39%	8.70%	18.75%
W28/153		41.00	23.00	64.00	33.00	21.00	54.00	19.51%	8.70%	15.63%
W29/153		41.00	23.00	64.00	34.00	21.00	55.00	17.07%	8.70%	14.06%
W30/153		41.00	23.00	64.00	34.00	22.00	56.00	17.07%	4.35%	12.50%
W31/153		41.00	23.00	64.00	34.00	23.00	57.00	17.07%	0.00%	10.94%
W32/153		41.00	23.00	64.00	34.00	23.00	57.00	17.07%	0.00%	10.94%
W33/153		41.00	23.00	64.00	34.00	23.00	57.00	17.07%	0.00%	10.94%
W34/153		41.00	23.00	64.00	34.00	23.00	57.00	17.07%	0.00%	10.94%
W37/153		41.00	23.00	64.00	35.00	23.00	58.00	14.63%	0.00%	9.38%
W38/153		41.00	23.00	64.00	35.00	23.00	58.00	14.63%	0.00%	9.38%
W39/153		41.00	23.00	64.00	35.00	23.00	58.00	14.63%	0.00%	9.38%
W40/153		41.00	23.00	64.00	35.00	23.00	58.00	14.63%	0.00%	9.38%
W41/153		41.00	23.00	64.00	35.00	23.00	58.00	14.63%	0.00%	9.38%
W42/153		41.00	23.00	64.00	35.00	23.00	58.00	14.63%	0.00%	9.38%
W43/153		41.00	23.00	64.00	35.00	23.00	58.00	14.63%	0.00%	9.38%
W44/153		41.00	23.00	64.00	35.00	23.00	58.00	14.63%	0.00%	9.38%
W45/153		41.00	23.00	64.00	37.00	23.00	60.00	9.76%	0.00%	6.25%
W46/153		41.00	23.00	64.00	38.00	23.00	61.00	7.32%	0.00%	4.69%
W47/153		41.00	23.00	64.00	39.00	23.00	62.00	4.88%	0.00%	3.13%
W48/153		41.00	23.00	64.00	39.00	23.00	62.00	4.88%	0.00%	3.13%
1 WELLESLEY ROAD BA81/30/BRE/134										
Gnd Floor										
W21/170		30.00	4.00	34.00	30.00	4.00	34.00	0.00%	0.00%	0.00%
W38/170		13.00	0.00	13.00	13.00	0.00	13.00	0.00%	0.00%	0.00%
1st Floor										
W21/171		35.00	9.00	44.00	35.00	9.00	44.00	0.00%	0.00%	0.00%
W35/171		23.00	0.00	23.00	23.00	0.00	23.00	0.00%	0.00%	0.00%



Room use	Window Ref	Existing %			Proposed %			% Loss of Summer	% Loss of Winter	% Loss of Total
		Summer	Winter	Total	Summer	Winter	Total			
58-74 HAVERSTOCK ROAD BA81/30/BRE/135										
2nd Floor										
BEDROOM	W1/182	33.00	14.00	47.00	18.00	13.00	31.00	45.45%	7.14%	34.04%
BEDROOM	W2/182	35.00	14.00	49.00	16.00	12.00	28.00	54.29%	14.29%	42.86%
BEDROOM	W3/182	35.00	13.00	48.00	15.00	12.00	27.00	57.14%	7.69%	43.75%
BEDROOM	W4/182	35.00	13.00	48.00	14.00	11.00	25.00	60.00%	15.38%	47.92%
BEDROOM	W5/182	35.00	13.00	48.00	14.00	10.00	24.00	60.00%	23.08%	50.00%
BEDROOM	W6/182	35.00	14.00	49.00	12.00	9.00	21.00	65.71%	35.71%	57.14%
BEDROOM	W7/182	35.00	14.00	49.00	12.00	9.00	21.00	65.71%	35.71%	57.14%
BEDROOM	W8/182	35.00	14.00	49.00	13.00	9.00	22.00	62.86%	35.71%	55.10%
BEDROOM	W9/182	35.00	14.00	49.00	12.00	9.00	21.00	65.71%	35.71%	57.14%
BEDROOM	W10/182	35.00	14.00	49.00	13.00	8.00	21.00	62.86%	42.86%	57.14%
BEDROOM	W11/182	34.00	14.00	48.00	13.00	8.00	21.00	61.76%	42.86%	56.25%
BEDROOM	W12/182	34.00	15.00	49.00	13.00	8.00	21.00	61.76%	46.67%	57.14%
BEDROOM	W13/182	34.00	15.00	49.00	13.00	7.00	20.00	61.76%	53.33%	59.18%
BEDROOM	W14/182	35.00	15.00	50.00	11.00	7.00	18.00	68.57%	53.33%	64.00%
BEDROOM	W15/182	34.00	15.00	49.00	15.00	6.00	21.00	55.88%	60.00%	57.14%
BEDROOM	W16/182	34.00	15.00	49.00	17.00	6.00	23.00	50.00%	60.00%	53.06%
BEDROOM	W17/182	34.00	15.00	49.00	20.00	7.00	27.00	41.18%	53.33%	44.90%
BEDROOM	W18/182	34.00	15.00	49.00	22.00	7.00	29.00	35.29%	53.33%	40.82%
BEDROOM	W19/182	34.00	15.00	49.00	23.00	6.00	29.00	32.35%	60.00%	40.82%
BEDROOM	W20/182	33.00	15.00	48.00	25.00	6.00	31.00	24.24%	60.00%	35.42%
3rd Floor										
W1/183		33.00	15.00	48.00	17.00	13.00	30.00	48.48%	13.33%	37.50%
W2/183		33.00	15.00	48.00	17.00	13.00	30.00	48.48%	13.33%	37.50%
W3/183		33.00	14.00	47.00	16.00	11.00	27.00	51.52%	21.43%	42.55%
W4/183		33.00	15.00	48.00	17.00	11.00	28.00	48.48%	26.67%	41.67%
W5/183		20.00	1.00	21.00	3.00	0.00	3.00	85.00%	100.00%	85.71%
W6/183		33.00	13.00	46.00	15.00	8.00	23.00	54.55%	38.46%	50.00%
W7/183		33.00	14.00	47.00	15.00	8.00	23.00	54.55%	42.86%	51.06%
W8/183		33.00	15.00	48.00	18.00	9.00	27.00	45.45%	40.00%	43.75%
W9/183		20.00	1.00	21.00	5.00	0.00	5.00	75.00%	100.00%	76.19%
W10/183		33.00	13.00	46.00	15.00	7.00	22.00	54.55%	46.15%	52.17%
W11/183		33.00	14.00	47.00	16.00	7.00	23.00	51.52%	50.00%	51.06%
W12/183		33.00	15.00	48.00	16.00	8.00	24.00	51.52%	46.67%	50.00%
W13/183		20.00	1.00	21.00	3.00	0.00	3.00	85.00%	100.00%	85.71%
W14/183		33.00	13.00	46.00	14.00	6.00	20.00	57.58%	53.85%	56.52%
W15/183		33.00	14.00	47.00	18.00	7.00	25.00	45.45%	50.00%	46.81%
W16/183		33.00	15.00	48.00	20.00	8.00	28.00	39.39%	46.67%	41.67%
W17/183		20.00	1.00	21.00	11.00	0.00	11.00	45.00%	100.00%	47.62%
W18/183		33.00	13.00	46.00	24.00	5.00	29.00	27.27%	61.54%	36.96%
W19/183		20.00	1.00	21.00	12.00	0.00	12.00	40.00%	100.00%	42.86%
W20/183		33.00	13.00	46.00	26.00	5.00	31.00	21.21%	61.54%	32.61%



Room use	Window Ref	Existing %			Proposed %			% Loss of Summer	% Loss of Winter	% Loss of Total
		Summer	Winter	Total	Summer	Winter	Total			
1-120 HAVERSTOCK ROAD BA81/30/BRE/136,137										
2nd Floor										
LIVINGROOM	W3/212	56.00	30.00	86.00	53.00	17.00	70.00	5.36%	43.33%	18.60%
LIVINGROOM	W4/212	56.00	30.00	86.00	53.00	16.00	69.00	5.36%	46.67%	19.77%
LIVINGROOM	W5/212	56.00	30.00	86.00	53.00	15.00	68.00	5.36%	50.00%	20.93%
KITCHEN	W6/212	56.00	30.00	86.00	53.00	13.00	66.00	5.36%	56.67%	23.26%
KITCHEN	W11/212	56.00	29.00	85.00	53.00	10.00	63.00	5.36%	65.52%	25.88%
LIVINGROOM	W12/212	56.00	29.00	85.00	52.00	10.00	62.00	7.14%	65.52%	27.06%
LIVINGROOM	W13/212	56.00	29.00	85.00	53.00	11.00	64.00	5.36%	62.07%	24.71%
LIVINGROOM	W14/212	55.00	29.00	84.00	52.00	11.00	63.00	5.45%	62.07%	25.00%
LIVINGROOM	W15/212	8.00	4.00	12.00	6.00	1.00	7.00	25.00%	75.00%	41.67%
LIVINGROOM	W16/212	15.00	8.00	23.00	12.00	4.00	16.00	20.00%	50.00%	30.43%
BEDROOM	W17/212	34.00	15.00	49.00	31.00	12.00	43.00	8.82%	20.00%	12.24%
LIVINGROOM	W18/212	8.00	3.00	11.00	6.00	2.00	8.00	25.00%	33.33%	27.27%
LIVINGROOM	W19/212	16.00	6.00	22.00	14.00	5.00	19.00	12.50%	16.67%	13.64%
LIVINGROOM	W20/212	8.00	3.00	11.00	7.00	2.00	9.00	12.50%	33.33%	18.18%
BEDROOM	W21/212	34.00	14.00	48.00	31.00	11.00	42.00	8.82%	21.43%	12.50%
LIVINGROOM	W22/212	13.00	0.00	13.00	12.00	0.00	12.00	7.69%	0.00%	7.69%
LIVINGROOM	W23/212	8.00	3.00	11.00	7.00	2.00	9.00	12.50%	33.33%	18.18%
3rd Floor										
LIVINGROOM	W3/213	56.00	30.00	86.00	56.00	18.00	74.00	0.00%	40.00%	13.95%
LIVINGROOM	W4/213	56.00	30.00	86.00	56.00	17.00	73.00	0.00%	43.33%	15.12%
LIVINGROOM	W5/213	56.00	30.00	86.00	56.00	15.00	71.00	0.00%	50.00%	17.44%
KITCHEN	W6/213	56.00	30.00	86.00	56.00	14.00	70.00	0.00%	53.33%	18.60%
KITCHEN	W11/213	56.00	29.00	85.00	56.00	14.00	70.00	0.00%	51.72%	17.65%
LIVINGROOM	W12/213	56.00	29.00	85.00	56.00	13.00	69.00	0.00%	55.17%	18.82%
LIVINGROOM	W13/213	56.00	29.00	85.00	56.00	15.00	71.00	0.00%	48.28%	16.47%
LIVINGROOM	W14/213	55.00	29.00	84.00	55.00	14.00	69.00	0.00%	51.72%	17.86%
LIVINGROOM	W15/213	8.00	4.00	12.00	8.00	3.00	11.00	0.00%	25.00%	8.33%
LIVINGROOM	W16/213	15.00	8.00	23.00	14.00	7.00	21.00	6.67%	12.50%	8.70%
BEDROOM	W17/213	34.00	15.00	49.00	33.00	14.00	47.00	2.94%	6.67%	4.08%
LIVINGROOM	W18/213	8.00	3.00	11.00	8.00	3.00	11.00	0.00%	0.00%	0.00%
LIVINGROOM	W19/213	16.00	6.00	22.00	16.00	6.00	22.00	0.00%	0.00%	0.00%
LIVINGROOM	W20/213	8.00	3.00	11.00	8.00	3.00	11.00	0.00%	0.00%	0.00%
BEDROOM	W21/213	34.00	14.00	48.00	34.00	14.00	48.00	0.00%	0.00%	0.00%
LIVINGROOM	W22/213	13.00	0.00	13.00	13.00	0.00	13.00	0.00%	0.00%	0.00%
LIVINGROOM	W23/213	8.00	3.00	11.00	8.00	2.00	10.00	0.00%	33.33%	9.09%
4th Floor										
LIVINGROOM	W3/214	56.00	30.00	86.00	56.00	22.00	78.00	0.00%	26.67%	9.30%
LIVINGROOM	W4/214	56.00	30.00	86.00	56.00	21.00	77.00	0.00%	30.00%	10.47%
LIVINGROOM	W5/214	56.00	30.00	86.00	56.00	22.00	78.00	0.00%	26.67%	9.30%
KITCHEN	W6/214	56.00	30.00	86.00	56.00	20.00	76.00	0.00%	33.33%	11.63%
KITCHEN	W11/214	56.00	30.00	86.00	56.00	21.00	77.00	0.00%	30.00%	10.47%
LIVINGROOM	W12/214	56.00	30.00	86.00	56.00	21.00	77.00	0.00%	30.00%	10.47%
LIVINGROOM	W13/214	56.00	30.00	86.00	56.00	22.00	78.00	0.00%	26.67%	9.30%
LIVINGROOM	W14/214	55.00	30.00	85.00	55.00	22.00	77.00	0.00%	26.67%	9.41%
LIVINGROOM	W15/214	8.00	5.00	13.00	8.00	5.00	13.00	0.00%	0.00%	0.00%
LIVINGROOM	W16/214	15.00	9.00	24.00	15.00	9.00	24.00	0.00%	0.00%	0.00%
BEDROOM	W17/214	34.00	15.00	49.00	34.00	15.00	49.00	0.00%	0.00%	0.00%
LIVINGROOM	W18/214	8.00	3.00	11.00	8.00	3.00	11.00	0.00%	0.00%	0.00%
LIVINGROOM	W19/214	16.00	6.00	22.00	16.00	6.00	22.00	0.00%	0.00%	0.00%
LIVINGROOM	W20/214	8.00	3.00	11.00	8.00	3.00	11.00	0.00%	0.00%	0.00%
BEDROOM	W21/214	34.00	14.00	48.00	34.00	14.00	48.00	0.00%	0.00%	0.00%
LIVINGROOM	W22/214	13.00	0.00	13.00	13.00	0.00	13.00	0.00%	0.00%	0.00%
LIVINGROOM	W23/214	8.00	3.00	11.00	8.00	3.00	11.00	0.00%	0.00%	0.00%



Room use	Window Ref	Existing %			Proposed %			% Loss of Summer	% Loss of Winter	% Loss of Total
		Summer	Winter	Total	Summer	Winter	Total			
5th Floor										
LIVINGROOM	W3/215	56.00	30.00	86.00	56.00	26.00	82.00	0.00%	13.33%	4.65%
LIVINGROOM	W4/215	56.00	30.00	86.00	56.00	25.00	81.00	0.00%	16.67%	5.81%
LIVINGROOM	W5/215	56.00	30.00	86.00	56.00	25.00	81.00	0.00%	16.67%	5.81%
KITCHEN	W6/215	56.00	30.00	86.00	56.00	24.00	80.00	0.00%	20.00%	6.98%
KITCHEN	W11/215	56.00	30.00	86.00	56.00	24.00	80.00	0.00%	20.00%	6.98%
LIVINGROOM	W12/215	56.00	30.00	86.00	56.00	23.00	79.00	0.00%	23.33%	8.14%
LIVINGROOM	W13/215	56.00	30.00	86.00	56.00	24.00	80.00	0.00%	20.00%	6.98%
LIVINGROOM	W14/215	55.00	30.00	85.00	55.00	25.00	80.00	0.00%	16.67%	5.88%
LIVINGROOM	W15/215	8.00	5.00	13.00	8.00	5.00	13.00	0.00%	0.00%	0.00%
LIVINGROOM	W16/215	15.00	9.00	24.00	15.00	9.00	24.00	0.00%	0.00%	0.00%
BEDROOM	W17/215	34.00	15.00	49.00	34.00	15.00	49.00	0.00%	0.00%	0.00%
LIVINGROOM	W18/215	8.00	3.00	11.00	8.00	3.00	11.00	0.00%	0.00%	0.00%
LIVINGROOM	W19/215	16.00	6.00	22.00	16.00	6.00	22.00	0.00%	0.00%	0.00%
LIVINGROOM	W20/215	8.00	3.00	11.00	8.00	3.00	11.00	0.00%	0.00%	0.00%
BEDROOM	W21/215	34.00	14.00	48.00	34.00	14.00	48.00	0.00%	0.00%	0.00%
LIVINGROOM	W22/215	13.00	0.00	13.00	13.00	0.00	13.00	0.00%	0.00%	0.00%
LIVINGROOM	W23/215	8.00	3.00	11.00	8.00	3.00	11.00	0.00%	0.00%	0.00%
6th Floor										
LIVINGROOM	W3/216	56.00	30.00	86.00	56.00	28.00	84.00	0.00%	6.67%	2.33%
LIVINGROOM	W4/216	56.00	30.00	86.00	56.00	28.00	84.00	0.00%	6.67%	2.33%
LIVINGROOM	W5/216	56.00	30.00	86.00	56.00	27.00	83.00	0.00%	10.00%	3.49%
KITCHEN	W6/216	56.00	30.00	86.00	56.00	26.00	82.00	0.00%	13.33%	4.65%
KITCHEN	W11/216	56.00	30.00	86.00	56.00	26.00	82.00	0.00%	13.33%	4.65%
LIVINGROOM	W12/216	56.00	30.00	86.00	56.00	27.00	83.00	0.00%	10.00%	3.49%
LIVINGROOM	W13/216	56.00	30.00	86.00	56.00	27.00	83.00	0.00%	10.00%	3.49%
LIVINGROOM	W14/216	55.00	30.00	85.00	55.00	27.00	82.00	0.00%	10.00%	3.53%
LIVINGROOM	W15/216	8.00	5.00	13.00	8.00	5.00	13.00	0.00%	0.00%	0.00%
LIVINGROOM	W16/216	15.00	9.00	24.00	15.00	9.00	24.00	0.00%	0.00%	0.00%
BEDROOM	W17/216	34.00	15.00	49.00	34.00	15.00	49.00	0.00%	0.00%	0.00%
LIVINGROOM	W18/216	8.00	3.00	11.00	8.00	3.00	11.00	0.00%	0.00%	0.00%
LIVINGROOM	W19/216	16.00	6.00	22.00	16.00	6.00	22.00	0.00%	0.00%	0.00%
LIVINGROOM	W20/216	8.00	3.00	11.00	8.00	3.00	11.00	0.00%	0.00%	0.00%
BEDROOM	W21/216	34.00	14.00	48.00	34.00	14.00	48.00	0.00%	0.00%	0.00%
LIVINGROOM	W22/216	13.00	0.00	13.00	13.00	0.00	13.00	0.00%	0.00%	0.00%
LIVINGROOM	W23/216	8.00	3.00	11.00	8.00	3.00	11.00	0.00%	0.00%	0.00%
7th Floor										
LIVINGROOM	W3/217	56.00	30.00	86.00	56.00	30.00	86.00	0.00%	0.00%	0.00%
LIVINGROOM	W4/217	56.00	30.00	86.00	56.00	30.00	86.00	0.00%	0.00%	0.00%
LIVINGROOM	W5/217	56.00	30.00	86.00	56.00	30.00	86.00	0.00%	0.00%	0.00%
KITCHEN	W6/217	56.00	30.00	86.00	56.00	30.00	86.00	0.00%	0.00%	0.00%
KITCHEN	W11/217	56.00	30.00	86.00	56.00	30.00	86.00	0.00%	0.00%	0.00%
LIVINGROOM	W12/217	56.00	30.00	86.00	56.00	30.00	86.00	0.00%	0.00%	0.00%
LIVINGROOM	W13/217	56.00	30.00	86.00	56.00	30.00	86.00	0.00%	0.00%	0.00%
LIVINGROOM	W14/217	55.00	30.00	85.00	55.00	30.00	85.00	0.00%	0.00%	0.00%
LIVINGROOM	W15/217	8.00	5.00	13.00	8.00	5.00	13.00	0.00%	0.00%	0.00%
LIVINGROOM	W16/217	15.00	9.00	24.00	15.00	9.00	24.00	0.00%	0.00%	0.00%
BEDROOM	W17/217	34.00	15.00	49.00	34.00	15.00	49.00	0.00%	0.00%	0.00%
LIVINGROOM	W18/217	8.00	3.00	11.00	8.00	3.00	11.00	0.00%	0.00%	0.00%
LIVINGROOM	W19/217	16.00	6.00	22.00	16.00	6.00	22.00	0.00%	0.00%	0.00%
LIVINGROOM	W20/217	8.00	3.00	11.00	8.00	3.00	11.00	0.00%	0.00%	0.00%
BEDROOM	W21/217	34.00	14.00	48.00	34.00	14.00	48.00	0.00%	0.00%	0.00%
LIVINGROOM	W22/217	13.00	0.00	13.00	13.00	0.00	13.00	0.00%	0.00%	0.00%
LIVINGROOM	W23/217	8.00	3.00	11.00	8.00	3.00	11.00	0.00%	0.00%	0.00%



Room use	Window Ref	Existing %			Proposed %			% Loss of Summer	% Loss of Winter	% Loss of Total
		Summer	Winter	Total	Summer	Winter	Total			
8th Floor										
LIVINGROOM	W3/218	56.00	30.00	86.00	56.00	30.00	86.00	0.00%	0.00%	0.00%
LIVINGROOM	W4/218	56.00	30.00	86.00	56.00	30.00	86.00	0.00%	0.00%	0.00%
LIVINGROOM	W5/218	56.00	30.00	86.00	56.00	30.00	86.00	0.00%	0.00%	0.00%
KITCHEN	W6/218	56.00	30.00	86.00	56.00	30.00	86.00	0.00%	0.00%	0.00%
KITCHEN	W11/218	56.00	30.00	86.00	56.00	30.00	86.00	0.00%	0.00%	0.00%
LIVINGROOM	W12/218	56.00	30.00	86.00	56.00	30.00	86.00	0.00%	0.00%	0.00%
LIVINGROOM	W13/218	56.00	30.00	86.00	56.00	30.00	86.00	0.00%	0.00%	0.00%
LIVINGROOM	W14/218	55.00	30.00	85.00	55.00	30.00	85.00	0.00%	0.00%	0.00%
LIVINGROOM	W15/218	8.00	5.00	13.00	8.00	5.00	13.00	0.00%	0.00%	0.00%
LIVINGROOM	W16/218	15.00	9.00	24.00	15.00	9.00	24.00	0.00%	0.00%	0.00%
BEDROOM	W17/218	34.00	15.00	49.00	34.00	15.00	49.00	0.00%	0.00%	0.00%
LIVINGROOM	W18/218	8.00	3.00	11.00	8.00	3.00	11.00	0.00%	0.00%	0.00%
LIVINGROOM	W19/218	16.00	6.00	22.00	16.00	6.00	22.00	0.00%	0.00%	0.00%
LIVINGROOM	W20/218	8.00	3.00	11.00	8.00	3.00	11.00	0.00%	0.00%	0.00%
BEDROOM	W21/218	34.00	14.00	48.00	34.00	14.00	48.00	0.00%	0.00%	0.00%
LIVINGROOM	W22/218	13.00	0.00	13.00	13.00	0.00	13.00	0.00%	0.00%	0.00%
LIVINGROOM	W23/218	8.00	3.00	11.00	8.00	3.00	11.00	0.00%	0.00%	0.00%