

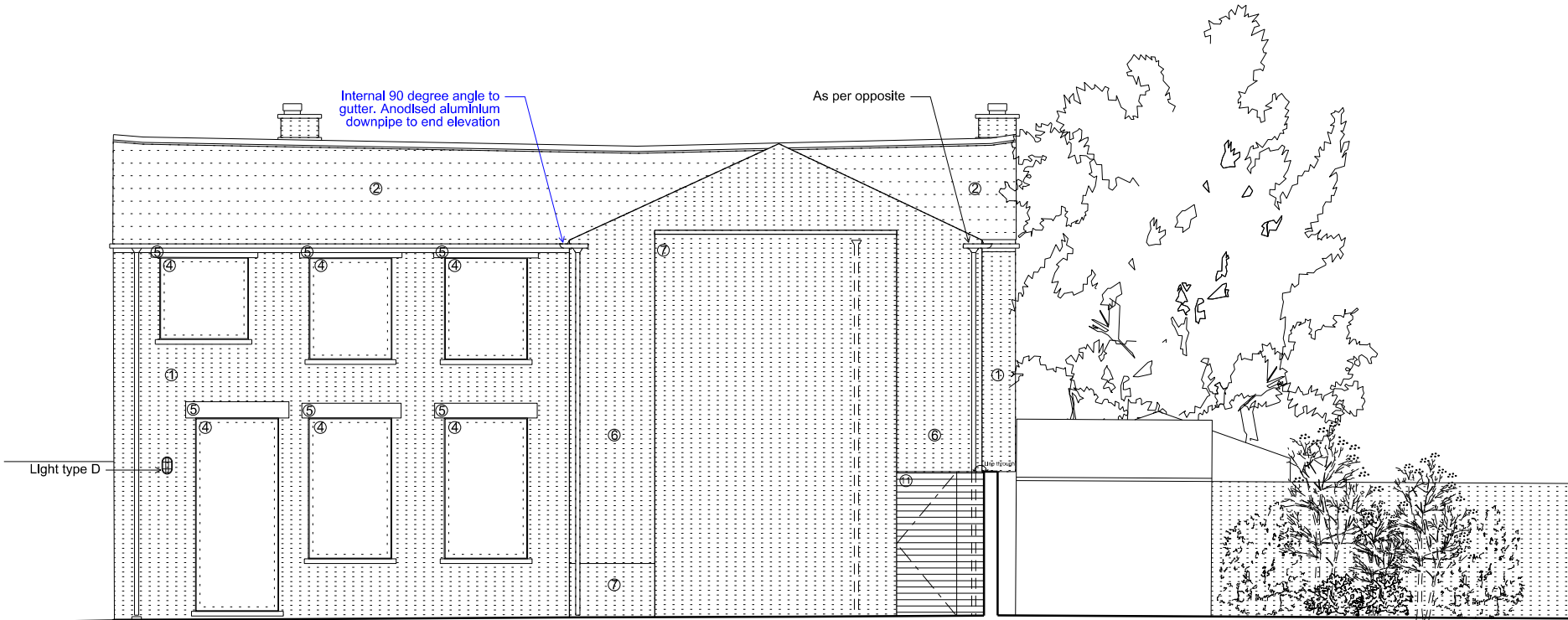
FOR PLANNING

Materials Key:

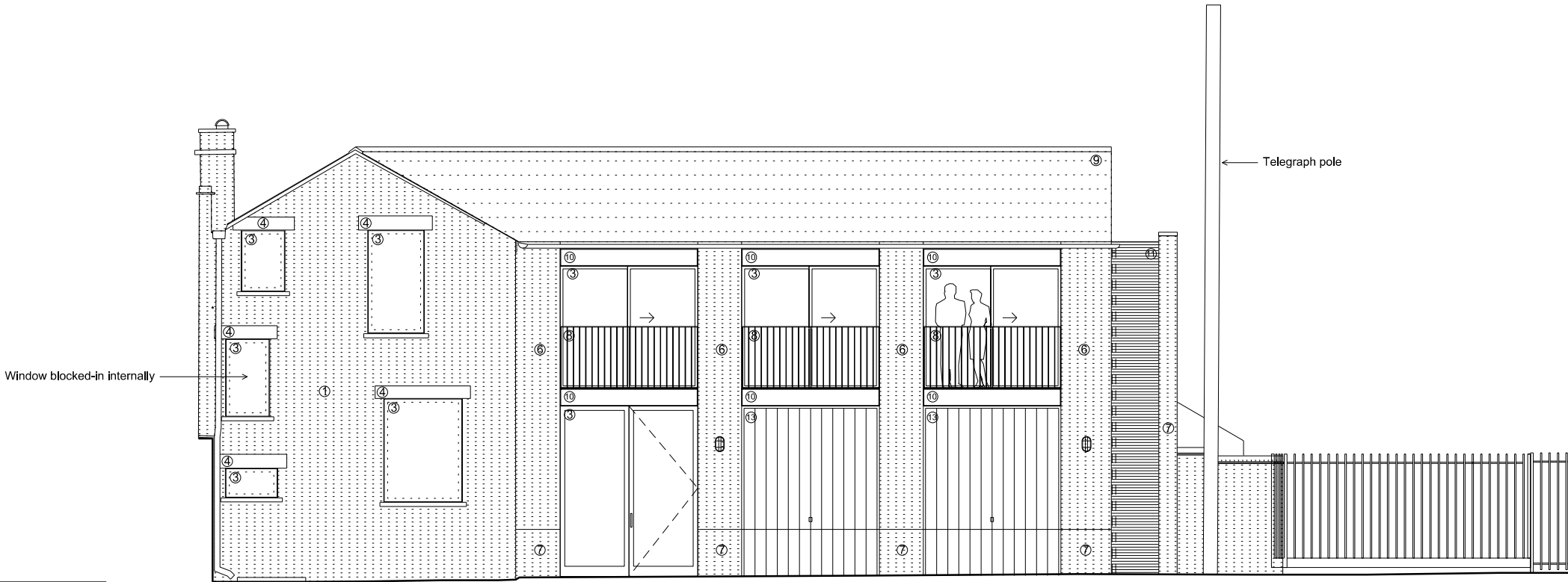
- EX1. Existing London stock brick
- EX2. Existing slate
- EX3. Aluminium framed double glazed windows / doors
- EX4. Framless timber framed windows
- EX5. White render
- EX6. Light yellow stock bricks (stretcher bond)
- EX7. Black engineering bricks (stretcher bond)
- EX8. Galvanised steel balustrade
- EX9. Canadian slate roof
- EX10. Galvanised steel lintels
- EX11. Glass with timber slats
- EX12. Velux rooflights
- EX13. Oak up and over garage doors

Notes:-
1. Refer to finishes schedule for materials specification.
2. For glazing drawings and specifications refer to drawing 373_710 to 373_714.

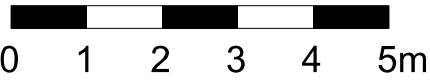
01 South Elevation
Existing



02 West Elevation
Existing



REVISION



Rev	Date	Description	drawn	checked
A	15/09/2016	Non material amendment	LAB	BHE

Do not Scale. Use figured dimensions only. All dimensions to be checked on site

All drawings to be read in conjunction with the Engineers' drawings. Any discrepancies between consultants drawings to be reported to the Architect before any work commences.

The Contractor's attention is drawn to the Health & Safety matters identified in the Health & Safety plan as being potentially hazardous. These items should not be considered as a complete and final list. The Work Package Contractor's normal Health and Safety obligations still apply when undertaking constructional operations both on and off site.

Owen Architects

46 Britton Street
London
EC1M 5UJ

+44 (0) 20 7608 2889 T
info@owenarchitects.co.uk

Project		Unit A - 44 St Paul's Crescent			
Title		Proposed South and West Elevations			
Date	Scale @A3	Project no.	Drawing no.	Rev.	
16/11/2015	1:100	373	310	A	