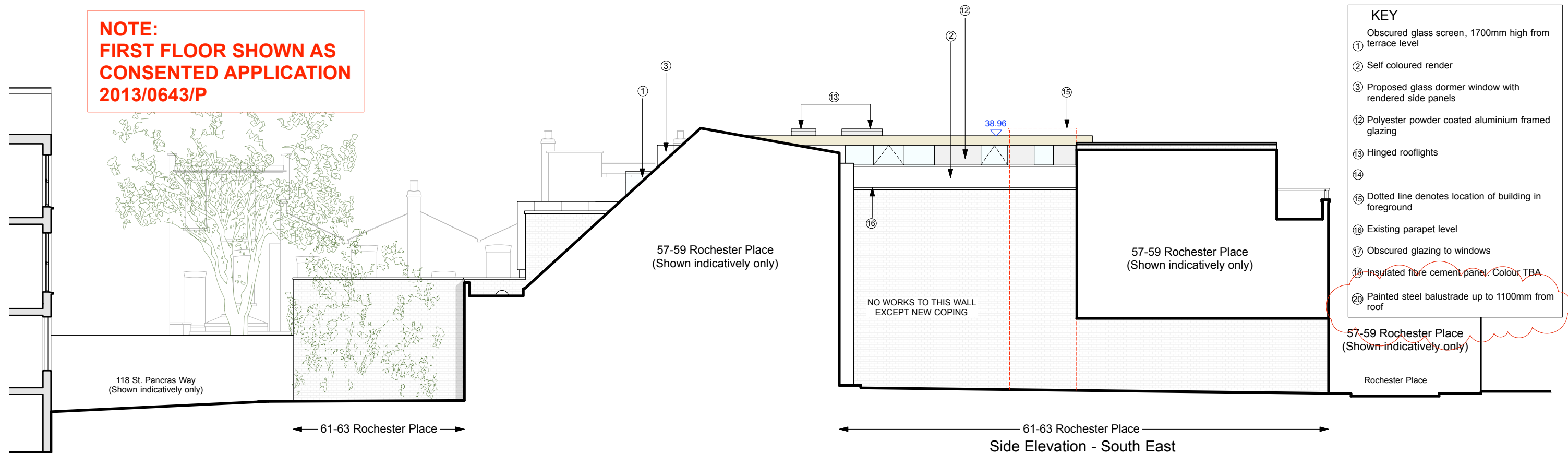


NOTE:
FIRST FLOOR SHOWN AS
CONSENTED APPLICATION
2013/0643/P

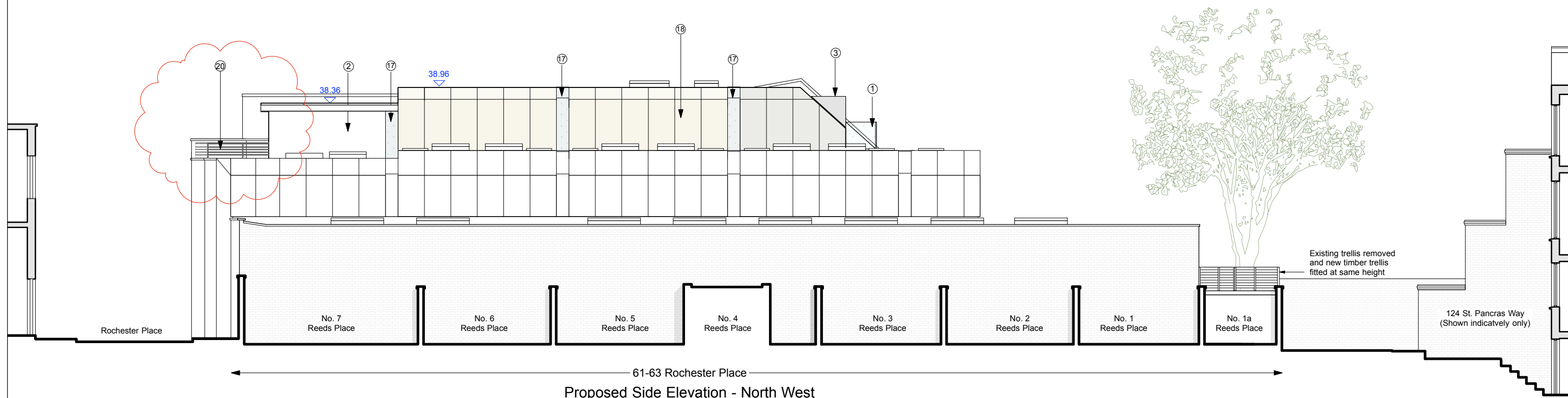


- KEY**
- Obscured glass screen, 1700mm high from terrace level
 - ①
 - Self coloured render
 - ②
 - Proposed glass dormer window with rendered side panels
 - ③
 - Polyester powder coated aluminium framed glazing
 - ⑫
 - Hinged rooflights
 - ⑬
 - Dotted line denotes location of building in foreground
 - ⑮
 - Existing parapet level
 - ⑯
 - Obscured glazing to windows
 - ⑰
 - Insulated fibre cement panel. Colour TBA
 - ⑱
 - Painted steel balustrade up to 1100mm from roof
 - ⑳

57-59 Rochester Place
(Shown indicatively only)

Rochester Place

61-63 Rochester Place
Side Elevation - South East



61-63 Rochester Place
Proposed Side Elevation - North West

REV. D - 16.09.09 - Glass Screens to Front now removed and side barrier changed to steel railings
REV. C - 16.02.16 - Elevation revised to reflect roof & plan updates.
REV. B - 19.10.15 - Front office layout revised
REV. A - 16.10.15 - High level window heights adjusted. Planting removed.

Scale 0 1m 2m 5m 8m

Norton Ellis Architects Ltd
14 Baltic Street East
London EC1Y 0UJ
Tel: 020 7490 3142

www.nortonellis.co.uk
mail@nortonellis.co.uk

These particulars do not constitute, nor constitute any part of, an offer or a contract. All statements contained in these particulars as to this property are made without the responsibility on the part of Norton Ellis Architects Ltd. or the Vendors or Lessors. None of the statements contained in these particulars as to this property are to be relied on as statements or representations of fact. All measurements are approximate and no responsibility is taken for any error, omission, or mis-statement and any intending purchaser or tenants must satisfy themselves by inspection or otherwise as to the correctness of each of the statements contained in these particulars/ plans.

Do not scale from this drawing. All dimensions to be checked on site and any discrepancy to be reported to the Architect prior to construction.
This drawing to be read in conjunction with all other drawings including those of other consultants.
Samples of all materials to be provided for comment/ approval prior to fabrication/construction

© 2014 Norton Ellis Architects Ltd.

Proposed Office North West & South East Elevations

PURPOSE OF ISSUE
Preliminary ☐
Planning ☒
Tender ☐
Construction ☐

266-006
Rev: D
Date: 24.11.2014
Scale: 1:100 @ A2

norton ellis architects **nea**
61-63 Rochester Place, NW1 9JU
Proposed Office North West & South East Elevations