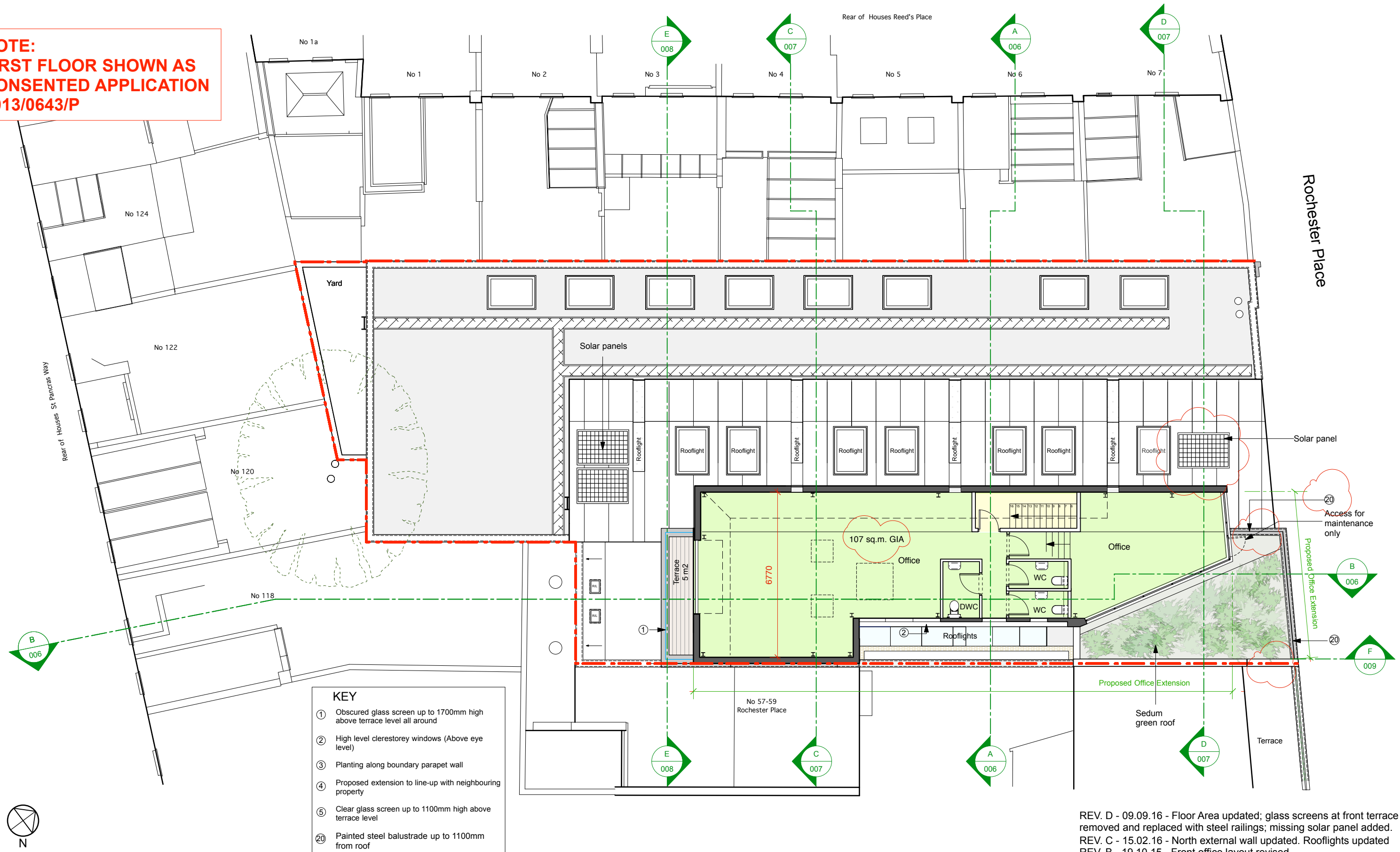


**NOTE:  
FIRST FLOOR SHOWN AS  
CONSENTED APPLICATION  
2013/0643/P**



REV. D - 09.09.16 - Floor Area updated; glass screens at front terrace removed and replaced with steel railings; missing solar panel added.  
REV. C - 15.02.16 - North external wall updated. Rooflights updated  
REV. B - 19.10.15 - Front office layout revised  
REV. A - 16.10.15 - Planting removed. Balustrade updated



**Norton Ellis Architects Ltd**  
**14 Baltic Street East**  
**London EC1Y 0UJ**  
**Tel: 020 7490 3142**  
**Fax: 056 0209 3407**  
**www.nortonellis.co.uk**  
**mail@nortonellis.co.uk**

These particulars do not constitute, nor constitute any part of, an offer or a contract. All statements contained in these particulars as to this property are made without the responsibility on the part of Norton Ellis Architects Ltd, or the Vendors or Lessors. None of the statements contained in these particulars as to this property are to be relied on as statements or representations of fact. All measurements are approximate and no responsibility is taken for any error, omission, or mis-statement and any intending purchaser or tenants must satisfy themselves by inspection or otherwise as to the correctness of each of the statements contained in these particulars plans.

Do not scale from this drawing. All dimensions to be checked on site and any discrepancy to be reported to the Architect prior to construction. This drawing to be read in conjunction with all other drawings including those of other consultants.

Samples of all materials to be provided for comment/ approval prior to fabrication/construction

© 2014 Norton Ellis Architects Ltd.

## Proposed Second Floor Office Plan

PURPOSE OF ISSUE	
Preliminary	<input type="checkbox"/>
Planning	<input checked="" type="checkbox"/>
Tender	<input type="checkbox"/>
Construction	<input type="checkbox"/>

**266-003**  
Rev: **D**  
Date: 08.11.14  
Scale: 1:100 @ A2

**norton ellis architects** **nea**  
 61-63 Rochester Place, NW1 9JU  
**Proposed Second Floor Plan**