

General Notes:

1. No dimension is to be scaled from this drawing. All Contractors must familiarise themselves with site conditions, including checking site dimensions, and must report in writing of any discrepancies with the information depicted in this drawing or the specifications. The Contractor shall obtain further instructions from CBRE prior to proceeding with the affected elements.
2. This drawing is to be read in conjunction with other related drawings, Specifications, Schedules and Bill of Materials (the Contract Information) produced and issued by CBRE and other involved parties for this project. The Contractor shall advise in writing of any inconsistencies or contradictions of any of the information contained therein and shall obtain further instructions from CBRE prior to proceeding.
3. Contractors to advise on suitability of all details and to ensure structural integrity, stability and strength of all construction for the intended performance.
4. Contractors to ensure that all specified and implied materials, fixtures and fittings are fabricated and installed in accordance with their manufacturers' recommendations. Contractor is responsible for obtaining all relevant manufacturers' data and related information. Where manufacturers' recommendations contradict or are inconsistent with any of the information contained within the Contract Information, the Contractor shall obtain further instructions from CBRE prior to proceeding.
5. Contractors to ensure that all materials and construction complies with Building Regulations, DDA and CDM Regulations, Environmental Health, Planning and any other relevant statutory requirements.
6. Contractors to ensure all specified materials, fixtures and fittings are procured to meet all aspects of the project programme and must advise CBRE if any items will not be available in sufficient time and to request further instructions.

Copyright notice:
This and all other documents authored by CBRE and all information and concepts both depicted and implied therein are the sole property of CBRE. Reproduction or transmission in any form is strictly forbidden unless prior permission is obtained in writing from CBRE. Construction based on the depicted information at any time or location not related to this project is strictly forbidden unless prior permission is obtained in writing from CBRE.

Rev	Date	Revision description	Int.
-	-	-	-

CBRE
CBRE Limited
 St Martins Court | 10 Paternoster Row |
 London | EC4M 7HP
 T: 0207 182 2000 | F: 0207 182 3007 |
 W : www.cbre.com

Project: CIEE 46-47 Russell Square London WC1		
Drawing: Basement Proposed Plan		
Scale: 1:100 @ A3	Drawn: SvM	Date: 11.07.16
Alternate Scale: -	Chkd: SM	Approved: XXX
Status: Planning & Listed Building Application		
Project No: -	Drawing No: APL.21	Rev No: -

LEGEND

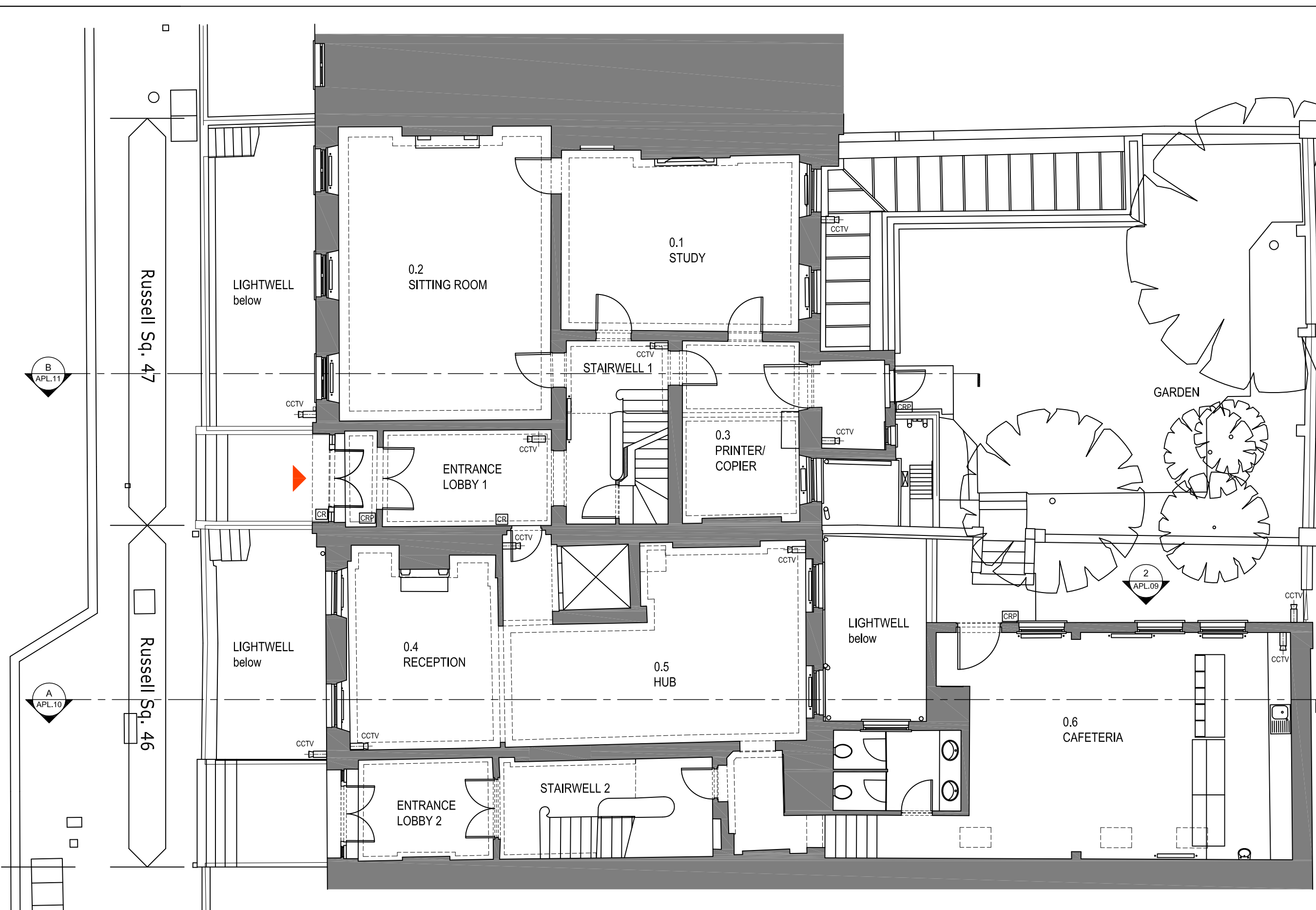
PROPOSED WALL MOUNTED CCTV
BANHAM; BAN-D-VF

SCALE 1:100@A3

General Notes:

1. No dimension is to be scaled from this drawing. All Contractors must familiarise themselves with site conditions, including checking site dimensions, and must report in writing of any discrepancies with the information depicted in this drawing or the specifications. The Contractor shall obtain further instructions from CBRE prior to proceeding with the affected elements.
2. This drawing is to be read in conjunction with other related drawings, Specifications, Schedules and Bill of Materials (the Contract Information) produced and issued by CBRE and other involved parties for this project. The Contractor shall advise in writing of any inconsistencies or contradictions of any of the information contained therein and shall obtain further instructions from CBRE prior to proceeding.
3. Contractors to advise on suitability of all details and to ensure structural integrity, stability and strength of all construction for the intended performance.
4. Contractors to ensure that all specified and implied materials, fixtures and fittings are fabricated and installed in accordance with their manufacturers' recommendations. Contractor is responsible for obtaining all relevant manufacturers' data and related information. Where manufacturers' recommendations contradict or are inconsistent with any of the information contained within the Contract Information, the Contractor shall obtain further instructions from CBRE prior to proceeding.
5. Contractors to ensure that all materials and construction complies with Building Regulations, DDA and CDM Regulations, Environmental Health, Planning and any other relevant statutory requirements.
6. Contractors to ensure all specified materials, fixtures and fittings are procured to meet all aspects of the project programme and must advise CBRE if any items will not be available in sufficient time and to request further instructions.

Copyright notice:
This and all other documents authored by CBRE and all information and concepts both depicted and implied therein are the sole property of CBRE. Reproduction or transmission in any form is strictly forbidden unless prior permission is obtained in writing from CBRE. Construction based on the depicted information at any time or location not related to this project is strictly forbidden unless prior permission is obtained in writing from CBRE.



Rev	Date	Revision description	Int.
-	-	-	-



CBRE Limited
 St Martins Court | 10 Paternoster Row |
 London | EC4M 7HP
 T: 0207 182 2000 | F: 0207 182 3007 |
 W : www.cbre.com

Project:
CIEE
 46-47 Russell Square
 London WC1

Drawing:
Ground Floor
Proposed Plan

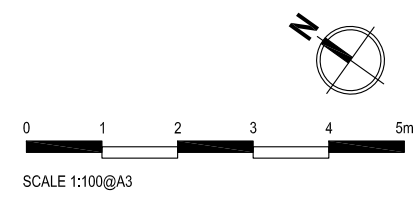
Scale: 1:100 @ A3	Drawn: SvM	Date: 11.07.16
Alternate Scale: -	Chkd: SM	Approved: XXX

Status:
Planning & Listed Building Application

Project No: -	Drawing No: APL.22	Rev No: -
------------------	------------------------------	--------------

LEGEND

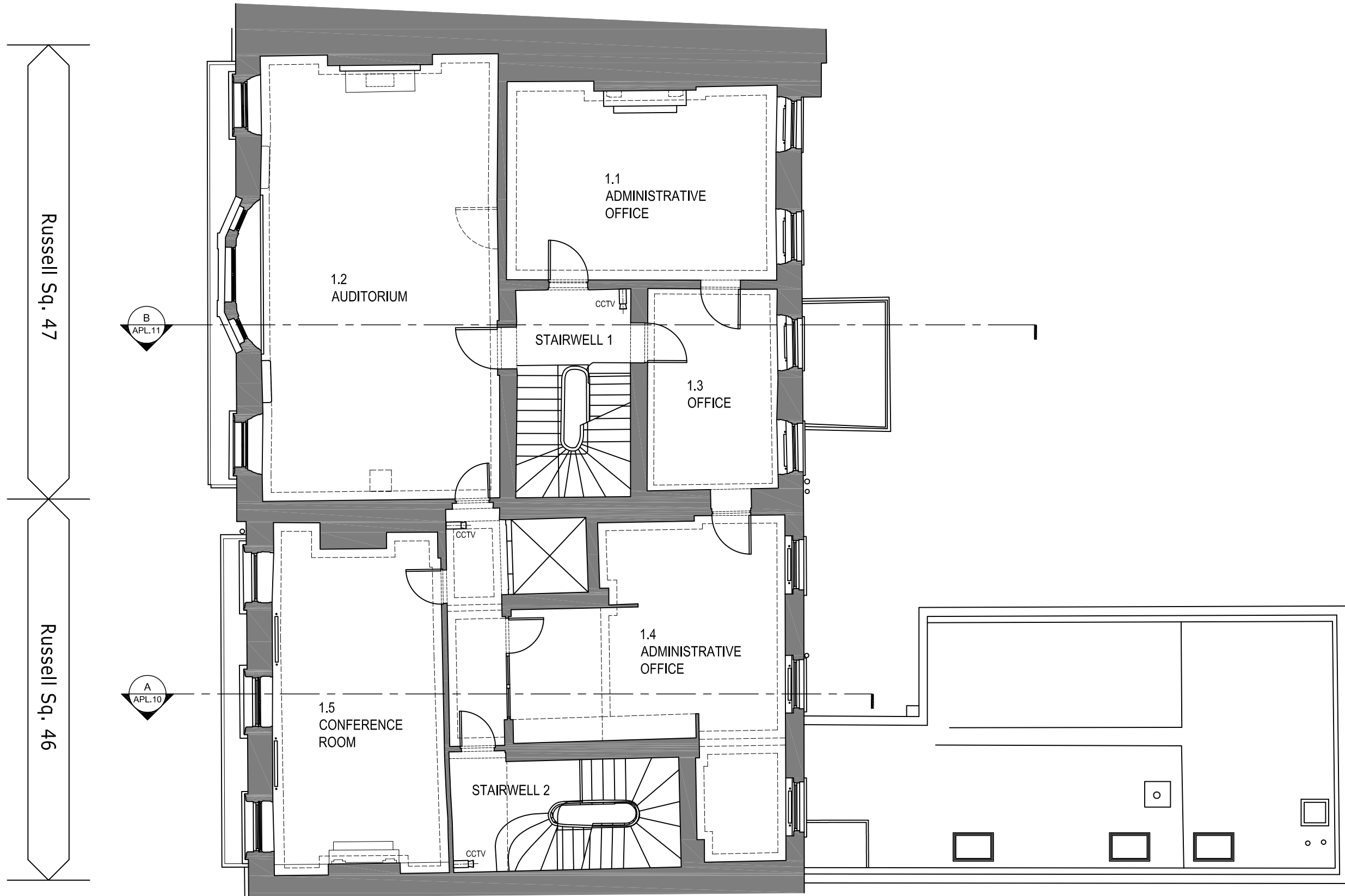
	PROPOSED WALL MOUNTED CCTV BANHAM: BAN-D-VF
	PROPOSED CEILING MOUNTED CCTV BANHAM: BAN-D-VF
	CARD READER, BANHAM: PAXTON PROXIMITY 50
	CARD READER PANEL, BANHAM: PAXTON PROXIMITY KEYPAD KP50



General Notes:

1. No dimension is to be scaled from this drawing. All Contractors must familiarise themselves with site conditions, including checking site dimensions, and must report in writing of any discrepancies with the information depicted in this drawing or the specifications. The Contractor shall obtain further instructions from CBRE prior to proceeding with the affected elements.
2. This drawing is to be read in conjunction with other related drawings, Specifications, Schedules and Bill of Materials (the Contract Information) produced and issued by CBRE and other involved parties for this project. The Contractor shall advise in writing of any inconsistencies or contradictions of any of the information contained therein and shall obtain further instructions from CBRE prior to proceeding.
3. Contractors to advise on suitability of all details and to ensure structural integrity, stability and strength of all construction for the intended performance.
4. Contractors to ensure that all specified and implied materials, fixtures and fittings are fabricated and installed in accordance with their manufacturers' recommendations. Contractor is responsible for obtaining all relevant manufacturers' data and related information. Where manufacturers' recommendations contradict or are inconsistent with any of the information contained within the Contract Information, the Contractor shall obtain further instructions from CBRE prior to proceeding.
5. Contractors to ensure that all materials and construction complies with Building Regulations, DDA and CDM Regulations, Environmental Health, Planning and any other relevant statutory requirements.
6. Contractors to ensure all specified materials, fixtures and fittings are procured to meet all aspects of the project programme and must advise CBRE if any items will not be available in sufficient time and to request further instructions.

Copyright notice:
This and all other documents authored by CBRE and all information and concepts both depicted and implied therein are the sole property of CBRE. Reproduction or transmission in any form is strictly forbidden unless prior permission is obtained in writing from CBRE. Construction based on the depicted information at any time or location not related to this project is strictly forbidden unless prior permission is obtained in writing from CBRE.



Rev	Date	Revision description	Int.
-	-	-	-



CBRE Limited
 St Martins Court | 10 Paternoster Row |
 London | EC 4M 7HP
 T: 0207 182 2000 | F: 0207 182 3007 |
 W : www.cbre.com

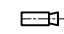
Project:
CIEE
46-47 Russell Square
London WC1

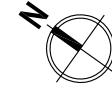
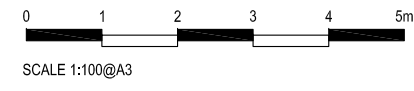
Drawing:
First Floor
Proposed Plan

Scale: 1:100 @ A3	Drawn: SvM	Date: 11.07.16
Alternate Scale: -	Chkd: SM	Approved: XXX

Status:
Planning & Listed Building Application

Project No: -	Drawing No: APL.23	Rev No: -
-------------------------	------------------------------	---------------------

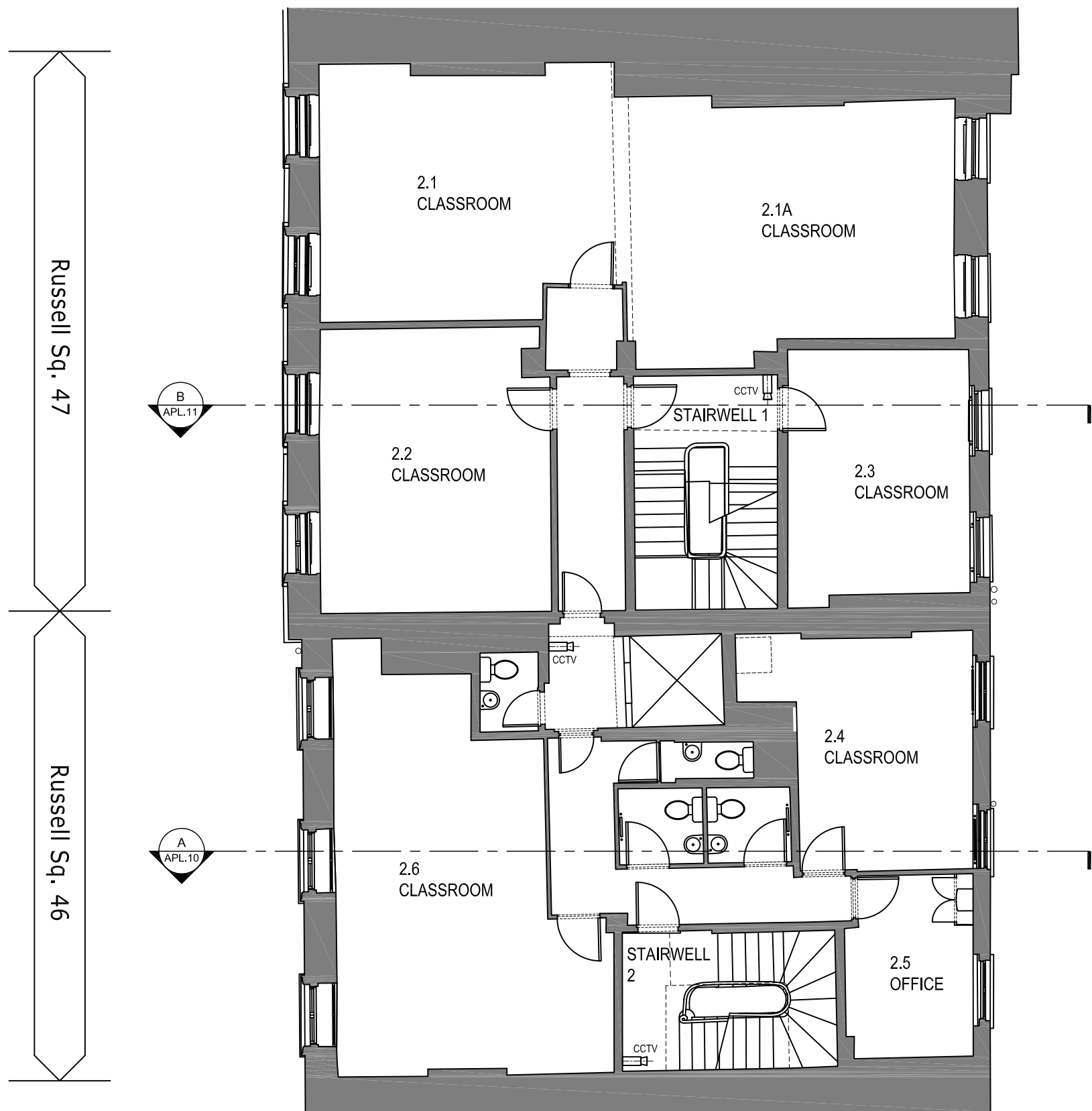
LEGEND
 PROPOSED WALL MOUNTED CCTV
 BANHAM: BAN-D-VF



General Notes:

- No dimension is to be scaled from this drawing. All Contractors must familiarise themselves with site conditions, including checking site dimensions, and must report in writing any discrepancies with the information depicted in this drawing or the specifications. The Contractor shall obtain further instructions from CBRE prior to proceeding with the affected elements.
- This drawing is to be read in conjunction with other related drawings, Specifications, Schedules and Bill of Quantities (the Contract Information) produced and issued by CBRE and other involved parties for this project. The Contractor shall advise in writing of any inconsistencies or contradictions of any of the information contained therein and shall obtain further instructions from CBRE prior to proceeding.
- Contractors to advise on suitability of all details and to ensure structural integrity, stability and strength of all construction for the intended performance.
- Contractors to ensure that all specified and implied materials, fixtures and fittings are fabricated and installed in accordance with their manufacturers' recommendations. Contractor is responsible for obtaining all relevant manufacturers' data and related information. Where manufacturers' recommendations contradict or are inconsistent with any of the information contained within the Contract Information, the Contractor shall obtain further instructions from CBRE prior to proceeding.
- Contractors to ensure that all materials and construction complies with Building Regulations, DDA and CDM Regulations, Environmental Health, Planning and any other relevant statutory requirements.
- Contractors to ensure all specified materials, fixtures and fittings are procured to meet all aspects of the project programme and must advise CBRE if any items will not be available in sufficient time and to request further instructions.

Copyright notice:
This and all other documents authored by CBRE and all information and concepts both depicted and implied therein are the sole property of CBRE. Reproduction or transmission in any form is strictly forbidden unless prior permission is obtained in writing from CBRE. Construction based on the depicted information at any time or location not related to this project is strictly forbidden unless prior permission is obtained in writing from CBRE.



Rev	Date	Revision description	Int.
-	-	-	-



CBRE Limited
 St Martins Court | 10 Paternoster Row |
 London | EC4M 7HP
 T: 0207 182 2000 | F: 0207 182 3007 |
 W: www.cbre.com

Project:
CIEE
 46-47 Russell Square
 London WC1

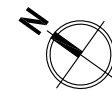
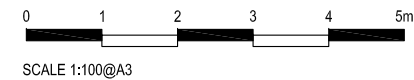
Drawing:
Second Floor
Proposed Plan

Scale: 1:100 @ A3	Drawn: SvM	Date: 11.07.16
Alternate Scale: -	Chkd: SM	Approved: XXX

Status:
Planning & Listed Building Application

Project No:	Drawing No: APL.24	Rev No: -
-------------	------------------------------	--------------

LEGEND
 PROPOSED WALL MOUNTED CCTV
 BANHAM: BAN-D-VF



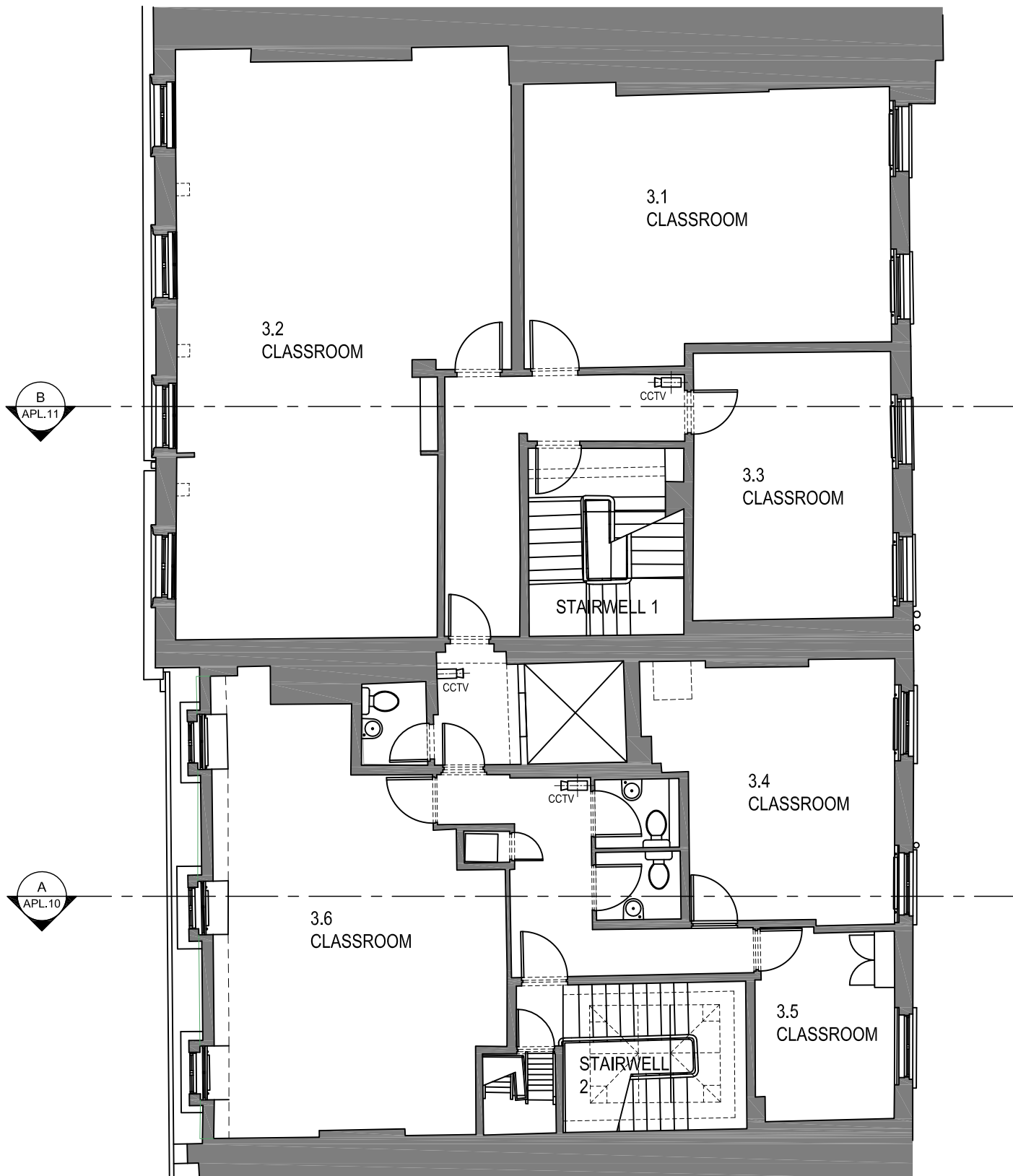
General Notes:

1. No dimension is to be scaled from this drawing. All Contractors must familiarise themselves with site conditions, including checking site dimensions, and must report in writing of any discrepancies with the information depicted in this drawing or the specifications. The Contractor shall obtain further instructions from CBRE prior to proceeding with the affected elements.
2. This drawing is to be read in conjunction with other related drawings, Specifications, Schedules and Bill of Quantities (the Contract Information) produced and issued by CBRE and other involved parties for this project. The Contractor shall advise in writing of any inconsistencies or contradictions of any of the information contained therein and shall obtain further instructions from CBRE prior to proceeding.
3. Contractors to advise on suitability of all details and to ensure structural integrity, stability and strength of all construction for the intended performance.
4. Contractors to ensure that all specified and implied materials, fixtures and fittings are fabricated and installed in accordance with their manufacturers' recommendations. Contractor is responsible for obtaining all relevant manufacturers' data and related information. Where manufacturers' recommendations contradict or are inconsistent with any of the information contained within the Contract Information, the Contractor shall obtain further instructions from CBRE prior to proceeding.
5. Contractors to ensure that all materials and construction complies with Building Regulations, DDA and CDM Regulations, Environmental Health, Planning and any other relevant statutory requirements.
6. Contractors to ensure all specified materials, fixtures and fittings are procured to meet all aspects of the project programme and must advise CBRE if any items will not be available in sufficient time and to request further instructions.

Copyright notice:
This and all other documents authored by CBRE and all information and concepts both depicted and implied therein are the sole property of CBRE. Reproduction or transmission in any form is strictly forbidden unless prior permission is obtained in writing from CBRE. Construction based on the depicted information at any time or location not related to this project is strictly forbidden unless prior permission is obtained in writing from CBRE.

Russell Sq. 47

Russell Sq. 46



Rev	Date	Revision description	Int.
-	-	-	-



CBRE Limited
St Martins Court | 10 Paternoster Row |
London | EC4M 7HP
T: 0207 182 2000 | F: 0207 182 3007 |
W: www.cbre.com

Project:
CIEE
46-47 Russell Square
London WC1

Drawing:
Third Floor
Proposed Plan

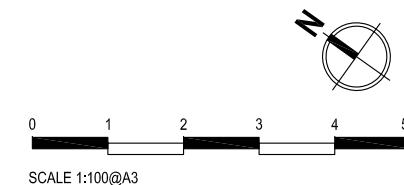
Scale: 1:100 @ A3	Drawn: SvM	Date: 11.07.16
Alternate Scale: -	Chkd: SM	Approved: XXX

Status:
Planning & Listed Building Application

Project No: -	Drawing No: APL.25	Rev No: -
------------------	------------------------------	--------------

LEGEND

	PROPOSED WALL MOUNTED CCTV BANHAM: BAN-D-VF
	PROPOSED CEILING MOUNTED CCTV BANHAM: BAN-D-VF



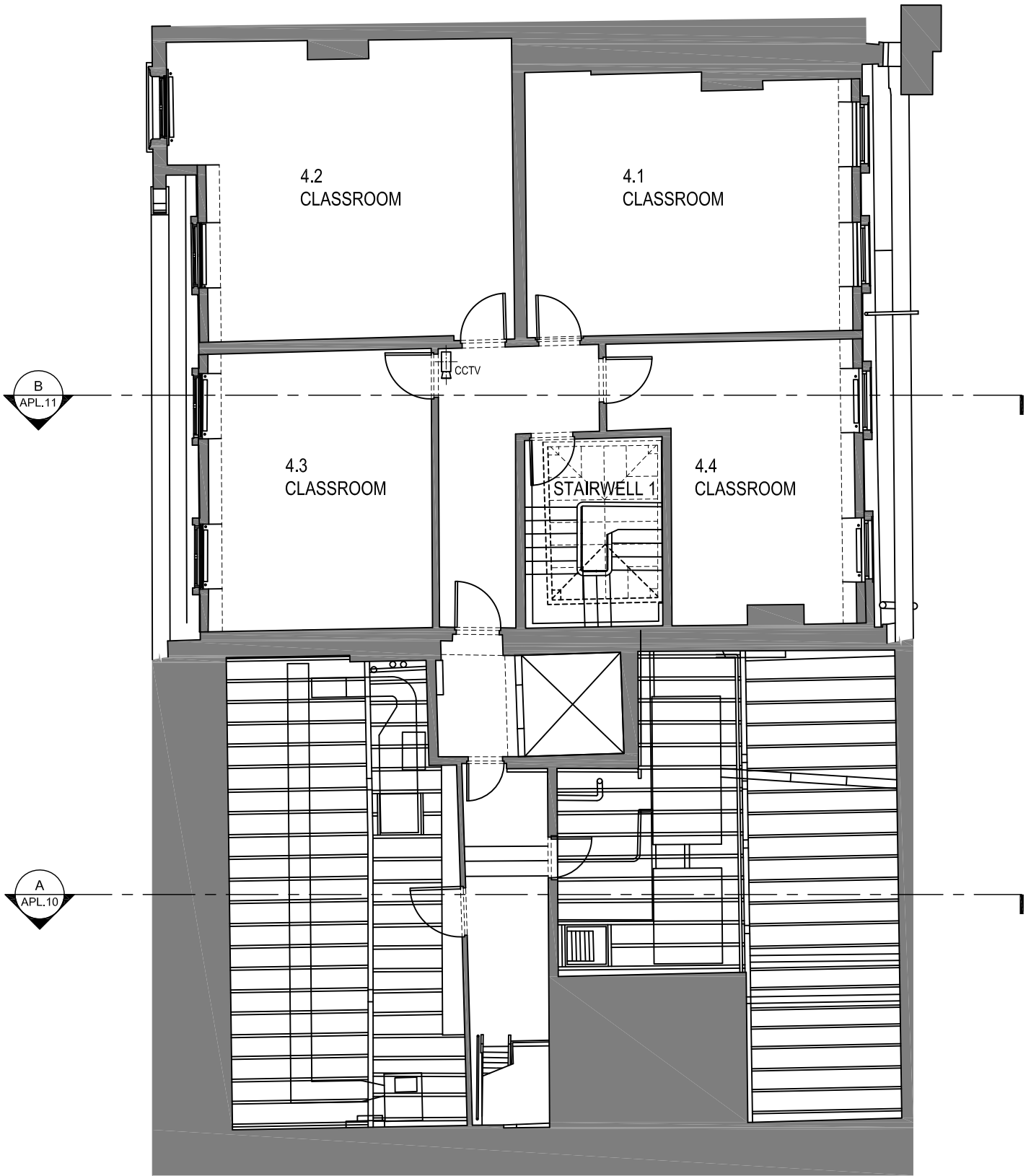
General Notes:

1. No dimension is to be scaled from this drawing. All Contractors must familiarise themselves with site conditions, including checking site dimensions, and must report in writing of any discrepancies with the information depicted in this drawing or the specifications. The Contractor shall obtain further instructions from CBRE prior to proceeding with the affected elements.
2. This drawing is to be read in conjunction with other related drawings, Specifications, Schedules and Bill of Quantities (the Contract Information) produced and issued by CBRE and other involved parties for this project. The Contractor shall advise in writing of any inconsistencies or contradictions of any of the information contained therein and shall obtain further instructions from CBRE prior to proceeding.
3. Contractors to advise on suitability of all details and to ensure structural integrity, stability and strength of all construction for the intended performance.
4. Contractors to ensure that all specified and implied materials, fixtures and fittings are fabricated and installed in accordance with their manufacturers' recommendations. Contractor is responsible for obtaining all relevant manufacturers' data and related information. Where manufacturers' recommendations contradict or are inconsistent with any of the information contained within the Contract Information, the Contractor shall obtain further instructions from CBRE prior to proceeding.
5. Contractors to ensure that all materials and construction complies with Building Regulations, DDA and CDM Regulations, Environmental Health, Planning and any other relevant statutory requirements.
6. Contractors to ensure all specified materials, fixtures and fittings are procured to meet all aspects of the project programme and must advise CBRE if any items will not be available in sufficient time and to request further instructions.

Copyright notice:
This and all other documents authored by CBRE and all information and concepts both depicted and implied therein are the sole property of CBRE. Reproduction or transmission in any form is strictly forbidden unless prior permission is obtained in writing from CBRE. Construction based on the depicted information at any time or location not related to this project is strictly forbidden unless prior permission is obtained in writing from CBRE.

Russell Sq. 47

Russell Sq. 46



Rev	Date	Revision description	Int.
-	-	-	-



CBRE Limited
 St Martins Court | 10 Paternoster Row |
 London | EC4M 7HP
 T: 0207 182 2000 | F: 0207 182 3007 |
 W : www.cbre.com

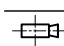
Project:
CIEE
 46-47 Russell Square
 London WC1

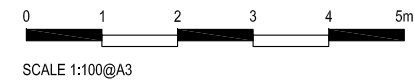
Drawing:
Fourth Floor
Proposed Plan

Scale: 1:100 @ A3	Drawn: SvM	Date: 11.07.16
Alternate Scale: -	Chkd: SM	Approved: XXX

Status:
Planning & Listed Building Application

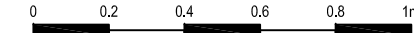
Project No: APL.26	Rev No: -
------------------------------	---------------------

LEGEND
 PROPOSED CEILING MOUNTED CCTV
 BANHAM: BAN-D-VF





SCALE 1:100@A3



SCALE 1:20@A3

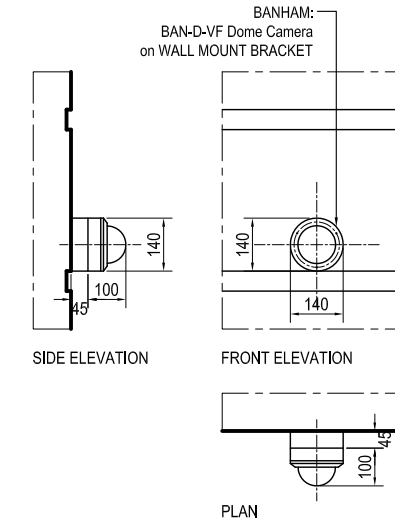
- General Notes:**
- No dimension is to be scaled from this drawing. All Contractors must familiarise themselves with site conditions, including checking site dimensions, and must report in writing any discrepancies with the information depicted in this drawing or the specifications. The Contractor shall obtain further instructions from CBRE prior to proceeding with the affected elements.
 - This drawing is to be read in conjunction with other related drawings, Specifications, Schedules and Bill of Materials (the Contract Information) produced and issued by CBRE and other involved parties for this project. The Contractor shall advise in writing of any inconsistencies or contradictions of any of the information contained therein and shall obtain further instructions from CBRE prior to proceeding.
 - Contractors to advise on suitability of all details and to ensure structural integrity, stability and strength of all construction for the intended performance.
 - Contractors to ensure that all specified and implied materials, fixtures and fittings are fabricated and installed in accordance with their manufacturers' recommendations. Contractor is responsible for obtaining all relevant manufacturers' data and related information. Where manufacturers' recommendations contradict or are inconsistent with any of the information contained within the Contract Information, the Contractor shall obtain further instructions from CBRE prior to proceeding.
 - Contractors to ensure that all materials and construction complies with Building Regulations, DDA and CDM Regulations, Environmental Health, Planning and any other relevant statutory requirements.
 - Contractors to ensure all specified materials, fixtures and fittings are procured to meet all aspects of the project programme and must advise CBRE if any items will not be available in sufficient time and to request further instructions.
- Copyright notice:**
This and all other documents authored by CBRE and all information and concepts both depicted and implied therein are the sole property of CBRE. Reproduction or transmission in any form is strictly forbidden unless prior permission is obtained in writing from CBRE. Construction based on the depicted information at any time or location not related to this project is strictly forbidden unless prior permission is obtained in writing from CBRE.



POSITION of EXISTING CCTV;
REPLACE with BANHAM:
BAN-D-VF Dome Camera
on wall mount bracket

2
BANHAM:
BAN-D-VF Dome Camera
on wall mount bracket

BANHAM:
Paxton Proximity 50
Card Reader
w50 h 100 d15mm



2 CCTV & BRACKET DETAILS
Scale 1:20 @A3

Rev	Date	Revision description	Int.
-	-	-	-



CBRE Limited
St Martins Court | 10 Paternoster Row |
London | EC4M 7HP
T: 0207 182 2000 | F: 0207 182 3007 |
W: www.cbre.com

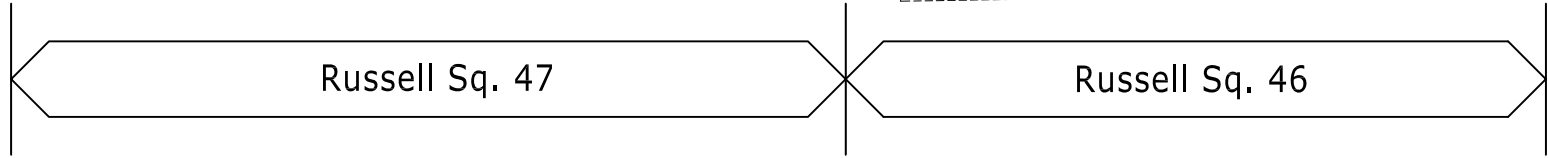
Project:
CIEE
46-47 Russell Square
London WC1

Drawing:
Front Elevation
Proposed Security System Locations

Scale: 1:100 & 1:20 @ A3	Drawn: SvM	Date: 11.07.16
Alternate Scale: -	Chkd: SM	Approved: XXX

Status:
Planning & Listed Building Application

Project No:	Drawing No: APL.28	Rev No: -
-------------	------------------------------	--------------



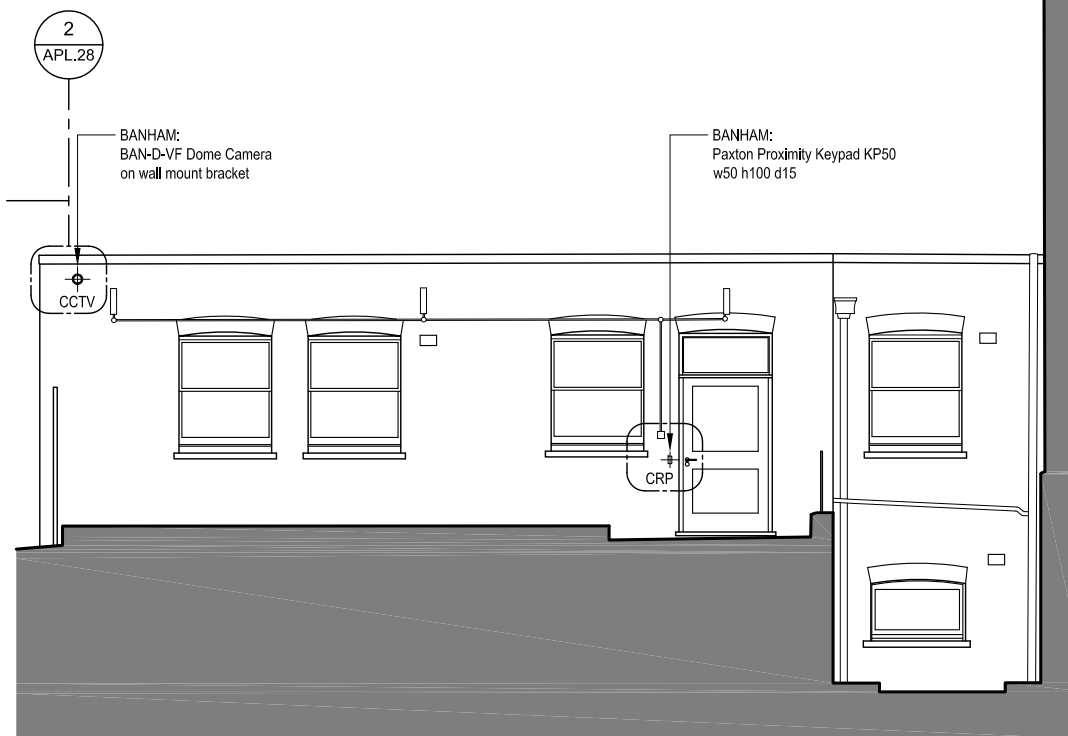
1 EXISTING FRONT ELEVATION showing PROPOSED SECURITY SYSTEM
Scale 1:100 @A3



Russell Sq. 46

Russell Sq. 47

1 EXISTING REAR ELEVATION showing PROPOSED SECURITY SYSTEM
Scale:1:100 @A3



Russell Sq. 46

2 EXISTING COURTYARD ELEVATION showing PROPOSED SECURITY SYSTEM
Scale:1:100 @A3

0 1 2 3 4 5m
SCALE 1:100@A3

General Notes:

1. No dimension is to be scaled from this drawing. All Contractors must familiarise themselves with site conditions, including checking site dimensions, and must report in writing of any discrepancies with the information depicted in this drawing or the specifications. The Contractor shall obtain further instructions from CBRE prior to proceeding with the affected elements.
2. This drawing is to be read in conjunction with other related drawings, Specifications, Schedules and Bill of Quantities (the Contract Information) produced and issued by CBRE and other involved parties for this project. The Contractor shall advise in writing of any inconsistencies or contradictions of any of the information contained therein and shall obtain further instructions from CBRE prior to proceeding.
3. Contractors to advise on suitability of all details and to ensure structural integrity, stability and strength of all construction for the intended performance.
4. Contractors to ensure that all specified and implied materials, fixtures and fittings are fabricated and installed in accordance with their manufacturers' recommendations. Contractor is responsible for obtaining all relevant manufacturers' data and related information. Where manufacturers' recommendations contradict or are inconsistent with any of the information contained within the Contract Information, the Contractor shall obtain further instructions from CBRE prior to proceeding.
5. Contractors to ensure that all materials and construction complies with Building Regulations, DDA and CDM Regulations, Environmental Health, Planning and any other relevant statutory requirements.
6. Contractors to ensure all specified materials, fixtures and fittings are procured to meet all aspects of the project programme and must advise CBRE if any items will not be available in sufficient time and to request further instructions.

Copyright notice:
This and all other documents authored by CBRE and all information and concepts both depicted and implied therein are the sole property of CBRE. Reproduction or transmission in any form is strictly forbidden unless prior permission is obtained in writing from CBRE. Construction based on the depicted information at any time or location not related to this project is strictly forbidden unless prior permission is obtained in writing from CBRE.

Rev	Date	Revision description	Int.
-	-	-	-



CBRE Limited
St Martins Court | 10 Paternoster Row |
London | EC4M 7HP
T: 0207 182 2000 | F: 0207 182 3007 |
W : www.cbre.com

Project:
CIEE
46-47 Russell Square
London WC1

Drawing:
Rear Elevation
Courtyard Elevation
Proposed Security System Locations

Scale: 1:100 @ A3	Drawn: SvM	Date: 11.07.16
Alternate Scale: -	Chkd: SM	Approved: XXX

Status:
Planning & Listed Building Application

Project No:	Drawing No: APL.29	Rev No: -
-------------	------------------------------	--------------