

General Notes:

- No dimension is to be scaled from this drawing. All Contractors must familiarise themselves with site conditions, including checking site dimensions, and must report in writing of any discrepancies with the information depicted in this drawing or the specifications. The Contractor shall obtain further instructions from CBRE prior to proceeding with the affected elements.
- This drawing is to be read in conjunction with other related drawings, Specifications, Schedules and Bill of Materials (the Contract Information) produced and issued by CBRE and other involved parties for this project. The Contractor shall advise in writing of any inconsistencies or contradictions of any of the information contained therein and shall obtain further instructions from CBRE prior to proceeding.
- Contractors to advise on suitability of all details and to ensure structural integrity, stability and strength of all construction for the intended performance.
- Contractors to ensure that all specified and implied materials, fixtures and fittings are fabricated and installed in accordance with their manufacturers' recommendations. Contractor is responsible for obtaining all relevant manufacturers' data and related information. Where manufacturers' recommendations contradict or are inconsistent with any of the information contained within the Contract Information, the Contractor shall obtain further instructions from CBRE prior to proceeding.
- Contractors to ensure that all materials and construction complies with Building Regulations, DDA and CDM Regulations, Environmental Health, Planning and any other relevant statutory requirements.
- Contractors to ensure all specified materials, fixtures and fittings are procured to meet all aspects of the project programme and must advise CBRE if any items will not be available in sufficient time and to request further instructions.

Copyright notice:
 This and all other documents authored by CBRE and all information and concepts both depicted and implied therein are the sole property of CBRE. Reproduction or transmission in any form is strictly forbidden unless prior permission is obtained in writing from CBRE. Construction based on the depicted information at any time or location not related to this project is strictly forbidden unless prior permission is obtained in writing from CBRE.

Rev	Date	Revision description	Int.
-	-	-	-

CBRE
CBRE Limited
 St Martins Court | 10 Paternoster Row |
 London | EC4M 7HP
 T: 0207 182 2000 | F: 0207 182 3007 |
 W: www.cbre.com

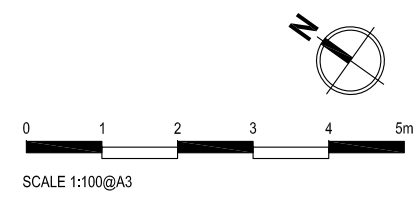
Project:
CIEE
46-47 Russell Square
London WC1

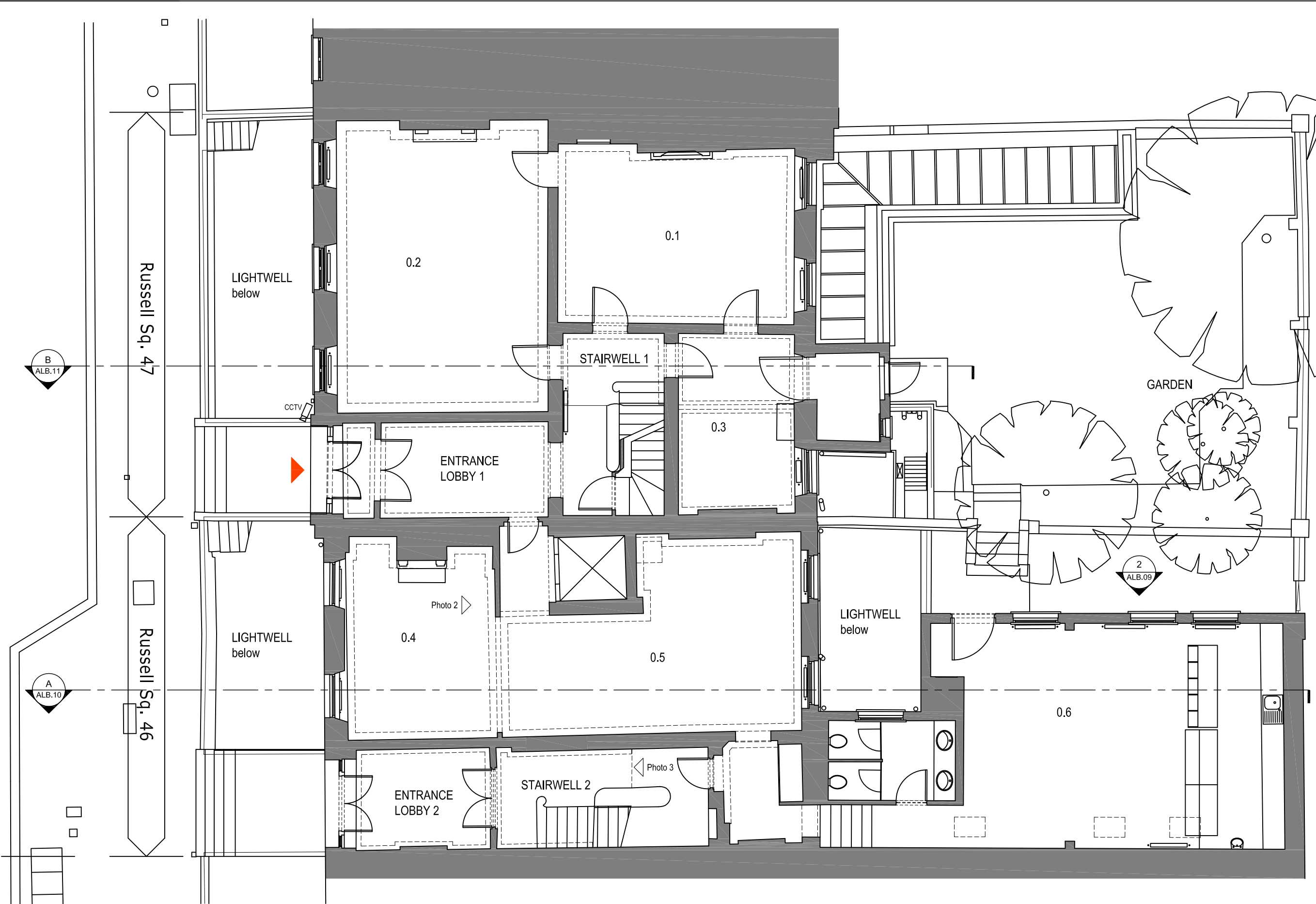
Drawing:
Basement
Existing Plan

Scale: 1:100 @ A3	Drawn: SvM	Date: 11.07.16
Alternate Scale: -	Chkd: SM	Approved: XXX

Status:
Listed Building Consent Application

Project No: -	Drawing No: ALB.01	Rev No: -
-------------------------	------------------------------	---------------------





General Notes:

1. No dimension is to be scaled from this drawing. All Contractors must familiarise themselves with site conditions, including checking site dimensions, and must report in writing of any discrepancies with the information depicted in this drawing or the specifications. The Contractor shall obtain further instructions from CBRE prior to proceeding with the affected elements.
2. This drawing is to be read in conjunction with other related drawings, Specifications, Schedules and Bill of Materials (the Contract Information) produced and issued by CBRE and other involved parties for this project. The Contractor shall advise in writing of any inconsistencies or contradictions of any of the information contained therein and shall obtain further instructions from CBRE prior to proceeding.
3. Contractors to advise on suitability of all details and to ensure structural integrity, stability and strength of all construction for the intended performance.
4. Contractors to ensure that all specified and implied materials, fixtures and fittings are fabricated and installed in accordance with their manufacturers' recommendations. Contractor is responsible for obtaining all relevant manufacturers' data and related information. Where manufacturers' recommendations contradict or are inconsistent with any of the information contained within the Contract Information, the Contractor shall obtain further instructions from CBRE prior to proceeding.
5. Contractors to ensure that all materials and construction complies with Building Regulations, DDA and CDM Regulations, Environmental Health, Planning and any other relevant statutory requirements.
6. Contractors to ensure all specified materials, fixtures and fittings are procured to meet all aspects of the project programme and must advise CBRE if any items will not be available in sufficient time and to request further instructions.

Copyright notice:
This and all other documents authored by CBRE and all information and concepts both depicted and implied therein are the sole property of CBRE. Reproduction or transmission in any form is strictly forbidden unless prior permission is obtained in writing from CBRE. Construction based on the depicted information at any time or location not related to this project is strictly forbidden unless prior permission is obtained in writing from CBRE.

B
ALB.11

A
ALB.10

Russell Sq. 47

Russell Sq. 46

Rev	Date	Revision description	Int.
-	-	-	-



CBRE Limited
St Martins Court | 10 Paternoster Row |
London | EC4M 7HP
T: 0207 182 2000 | F: 0207 182 3007 |
W: www.cbre.com

Project:
CIEE
46-47 Russell Square
London WC1

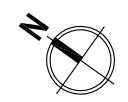
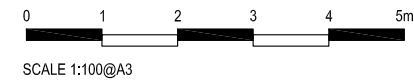
Drawing:
Ground Floor
Existing Plan

Scale: 1:100 @ A3	Drawn: SvM	Date: 11.07.16
Alternate Scale: -	Chkd: SM	Approved: XXX

Status:
Listed Building Consent Application

Project No:	Drawing No:	Rev No:
-	ABL.02	-

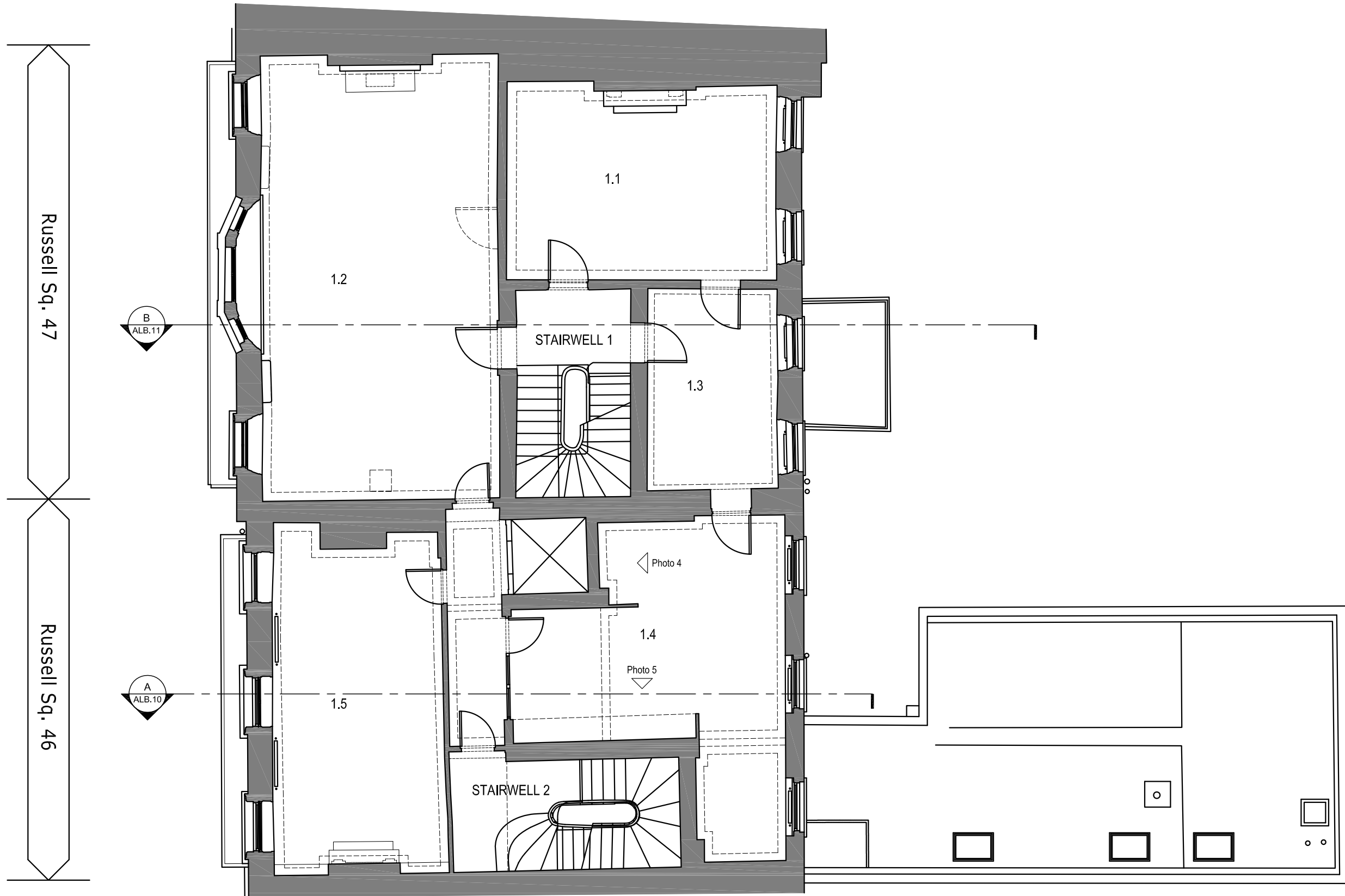
LEGEND
EXISTING CCTV



General Notes:

- No dimension is to be scaled from this drawing. All Contractors must familiarise themselves with site conditions, including checking site dimensions, and must report in writing any discrepancies with the information depicted in this drawing or the specifications. The Contractor shall obtain further instructions from CBRE prior to proceeding with the affected elements.
- This drawing is to be read in conjunction with other related drawings, Specifications, Schedules and Bill of Materials (the Contract Information) produced and issued by CBRE and other involved parties for this project. The Contractor shall advise in writing of any inconsistencies or contradictions of any of the information contained therein and shall obtain further instructions from CBRE prior to proceeding.
- Contractors to advise on suitability of all details and to ensure structural integrity, stability and strength of all construction for the intended performance.
- Contractors to ensure that all specified and implied materials, fixtures and fittings are fabricated and installed in accordance with their manufacturers' recommendations. Contractor is responsible for obtaining all relevant manufacturers' data and related information. Where manufacturers' recommendations contradict or are inconsistent with any of the information contained within the Contract Information, the Contractor shall obtain further instructions from CBRE prior to proceeding.
- Contractors to ensure that all materials and construction complies with Building Regulations, DDA and CDM Regulations, Environmental Health, Planning and any other relevant statutory requirements.
- Contractors to ensure all specified materials, fixtures and fittings are procured to meet all aspects of the project programme and must advise CBRE if any items will not be available in sufficient time and to request further instructions.

Copyright notice:
This and all other documents authored by CBRE and all information and concepts both depicted and implied therein are the sole property of CBRE. Reproduction or transmission in any form is strictly forbidden unless prior permission is obtained in writing from CBRE. Construction based on the depicted information at any time or location not related to this project is strictly forbidden unless prior permission is obtained in writing from CBRE.



Rev	Date	Revision description	Int.
-	-	-	-



CBRE Limited
 St Martins Court | 10 Paternoster Row |
 London | EC 4 M 7 HP
 T: 0207 182 2000 | F: 0207 182 3007 |
 W : www.cbre.com

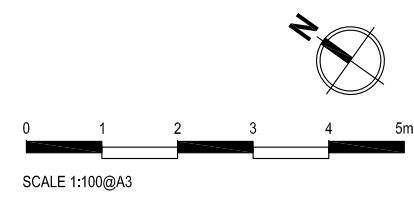
Project:
CIEE
 46-47 Russell Square
 London WC1

Drawing:
First Floor
Existing Plan

Scale: 1:100 @ A3	Drawn: SvM	Date: 11.07.16
Alternate Scale: -	Chkd: SM	Approved: XXX

Status:
Listed Building Consent Application

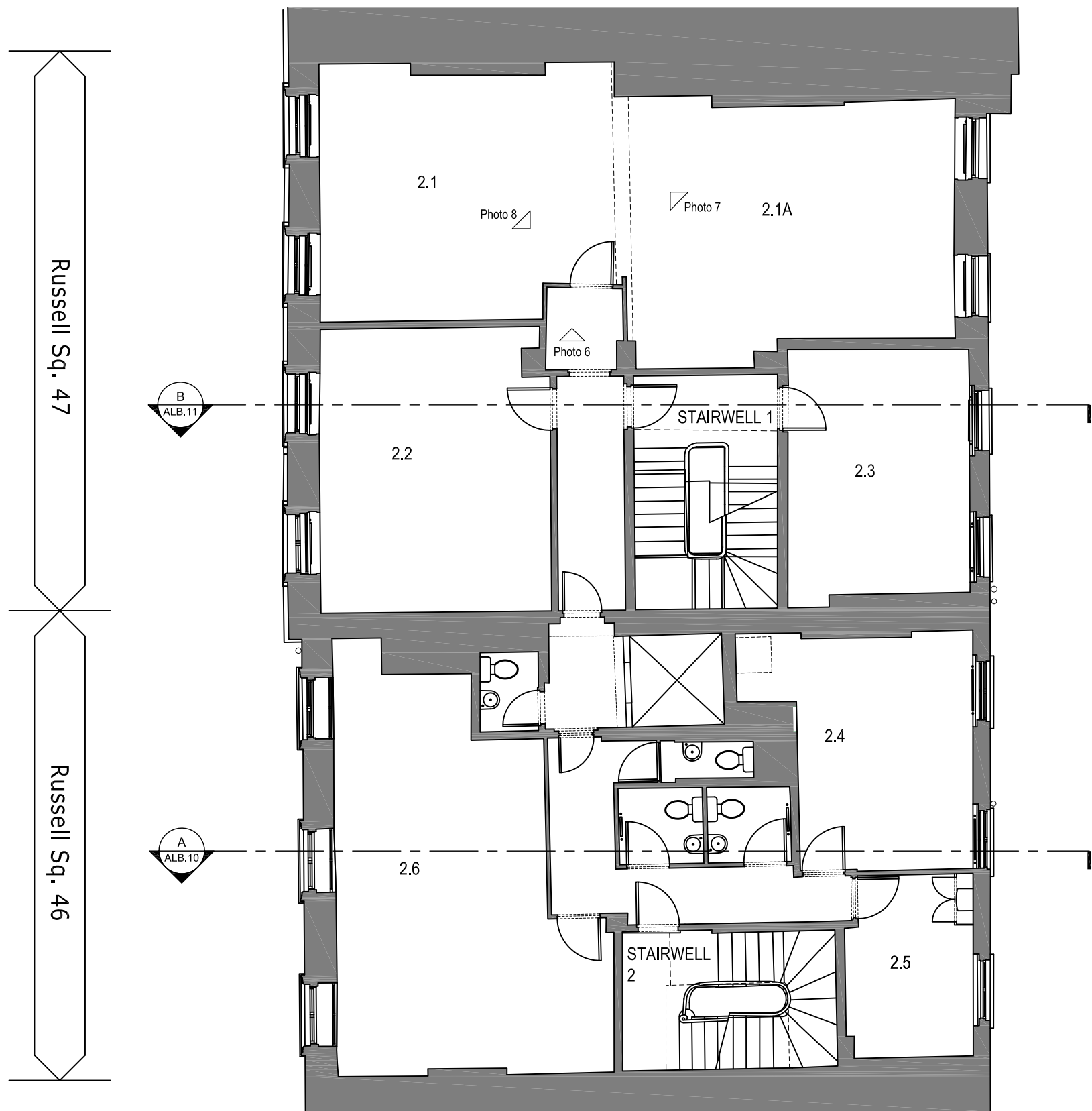
Project No:	Drawing No: ALB.03	Rev No: -
-------------	------------------------------	---------------------



General Notes:

1. No dimension is to be scaled from this drawing. All Contractors must familiarise themselves with site conditions, including checking site dimensions, and must report in writing any discrepancies with the information depicted in this drawing or the specifications. The Contractor shall obtain further instructions from CBRE prior to proceeding with the affected elements.
2. This drawing is to be read in conjunction with other related drawings, Specifications, Schedules and Bill of Materials (the Contract Information) produced and issued by CBRE and other involved parties for this project. The Contractor shall advise in writing of any inconsistencies or contradictions of any of the information contained therein and shall obtain further instructions from CBRE prior to proceeding.
3. Contractors to advise on suitability of all details and to ensure structural integrity, stability and strength of all construction for the intended performance.
4. Contractors to ensure that all specified and implied materials, fixtures and fittings are fabricated and installed in accordance with their manufacturers' recommendations. Contractor is responsible for obtaining all relevant manufacturers' data and related information. Where manufacturers' recommendations contradict or are inconsistent with any of the information contained within the Contract Information, the Contractor shall obtain further instructions from CBRE prior to proceeding.
5. Contractors to ensure that all materials and construction complies with Building Regulations, DDA and CDM Regulations, Environmental Health, Planning and any other relevant statutory requirements.
6. Contractors to ensure all specified materials, fixtures and fittings are procured to meet all aspects of the project programme and must advise CBRE if any items will not be available in sufficient time and to request further instructions.

Copyright notice:
This and all other documents authored by CBRE and all information and concepts both depicted and implied therein are the sole property of CBRE. Reproduction or transmission in any form is strictly forbidden unless prior permission is obtained in writing from CBRE. Construction based on the depicted information at any time or location not related to this project is strictly forbidden unless prior permission is obtained in writing from CBRE.



Rev	Date	Revision description	Int.
-	-	-	-



CBRE Limited
 St Martins Court | 10 Paternoster Row |
 London | EC4M 7HP
 T: 0207 182 2000 | F: 0207 182 3007 |
 W: www.cbre.com

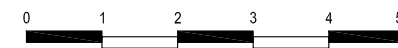
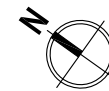
Project:
CIEE
 46-47 Russell Square
 London WC1

Drawing:
Second Floor
Existing Plan

Scale: 1:100 @ A3	Drawn: SvM	Date: 11.07.16
Alternate Scale: -	Chkd: SM	Approved: XXX

Status:
Listed Building Consent Application

Project No:	Drawing No: ALB.04	Rev No: -
-------------	------------------------------	---------------------

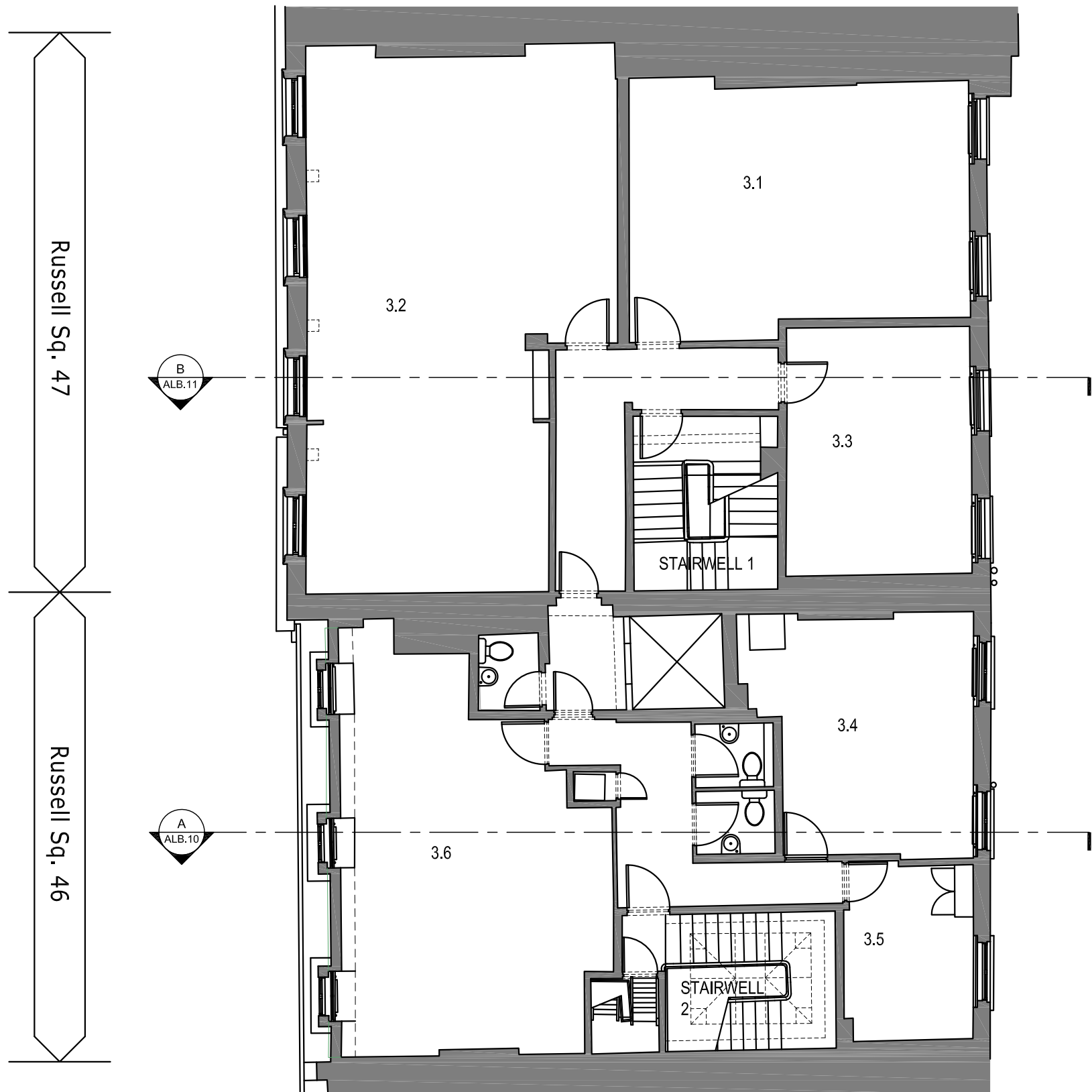


SCALE 1:100@A3

General Notes:

1. No dimension is to be scaled from this drawing. All Contractors must familiarise themselves with site conditions, including checking site dimensions, and must report in writing any discrepancies with the information depicted in this drawing or the specifications. The Contractor shall obtain further instructions from CBRE prior to proceeding with the affected elements.
2. This drawing is to be read in conjunction with other related drawings, Specifications, Schedules and Bill of Quantities (the Contract Information) produced and issued by CBRE and other involved parties for this project. The Contractor shall advise in writing of any inconsistencies or contradictions of any of the information contained therein and shall obtain further instructions from CBRE prior to proceeding.
3. Contractors to advise on suitability of all details and to ensure structural integrity, stability and strength of all construction for the intended performance.
4. Contractors to ensure that all specified and implied materials, fixtures and fittings are fabricated and installed in accordance with their manufacturers' recommendations. Contractor is responsible for obtaining all relevant manufacturers' data and related information. Where manufacturers' recommendations contradict or are inconsistent with any of the information contained within the Contract Information, the Contractor shall obtain further instructions from CBRE prior to proceeding.
5. Contractors to ensure that all materials and construction complies with Building Regulations, DDA and CDM Regulations, Environmental Health, Planning and any other relevant statutory requirements.
6. Contractors to ensure all specified materials, fixtures and fittings are procured to meet all aspects of the project programme and must advise CBRE if any items will not be available in sufficient time and to request further instructions.

Copyright notice:
This and all other documents authored by CBRE and all information and concepts both depicted and implied therein are the sole property of CBRE. Reproduction or transmission in any form is strictly forbidden unless prior permission is obtained in writing from CBRE. Construction based on the depicted information at any time or location not related to this project is strictly forbidden unless prior permission is obtained in writing from CBRE.



Rev	Date	Revision description	Int.
-	-	-	-



CBRE Limited
 St Martins Court | 10 Paternoster Row |
 London | EC4M 7HP
 T: 0207 182 2000 | F: 0207 182 3007 |
 W : www.cbre.com

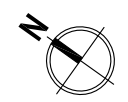
Project:
CIEE
46-47 Russell Square
London WC1

Drawing:
Third Floor
Existing Plan

Scale: 1:100 @ A3	Drawn: SvM	Date: 11.07.16
Alternate Scale: -	Chkd: SM	Approved: XXX

Status:
Listed Building Consent Application

Project No:	Drawing No: ALB.05	Rev No: -
-------------	------------------------------	---------------------

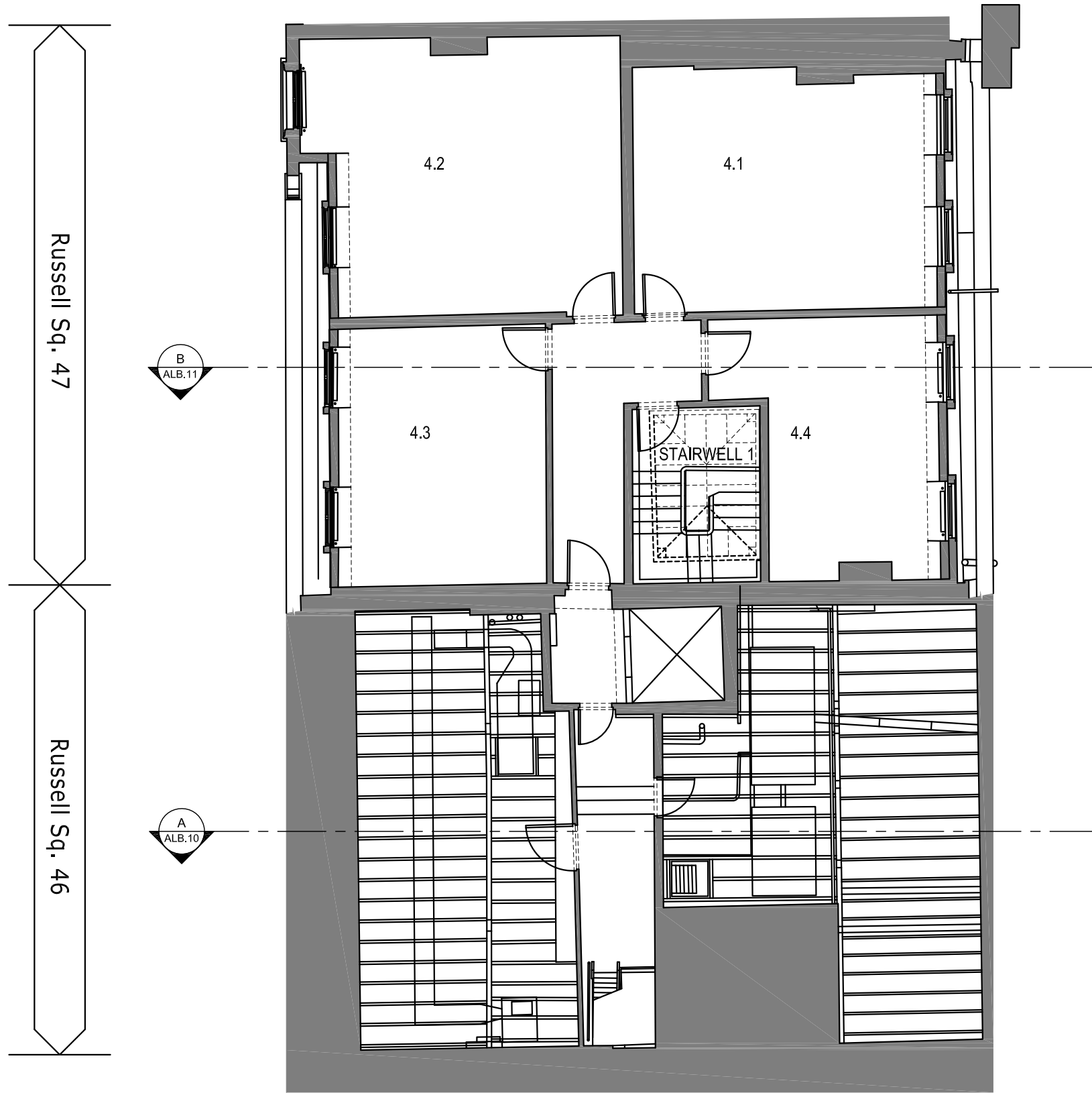


SCALE 1:100@A3

General Notes:

1. No dimension is to be scaled from this drawing. All Contractors must familiarise themselves with site conditions, including checking site dimensions, and must report in writing any discrepancies with the information depicted in this drawing or the specifications. The Contractor shall obtain further instructions from CBRE prior to proceeding with the affected elements.
2. This drawing is to be read in conjunction with other related drawings, Specifications, Schedules and Bill of Quantities (the Contract Information) produced and issued by CBRE and other involved parties for this project. The Contractor shall advise in writing of any inconsistencies or contradictions of any of the information contained therein and shall obtain further instructions from CBRE prior to proceeding.
3. Contractors to advise on suitability of all details and to ensure structural integrity, stability and strength of all construction for the intended performance.
4. Contractors to ensure that all specified and implied materials, fixtures and fittings are fabricated and installed in accordance with their manufacturers' recommendations. Contractor is responsible for obtaining all relevant manufacturers' data and related information. Where manufacturers' recommendations contradict or are inconsistent with any of the information contained within the Contract Information, the Contractor shall obtain further instructions from CBRE prior to proceeding.
5. Contractors to ensure that all materials and construction complies with Building Regulations, DDA and CDM Regulations, Environmental Health, Planning and any other relevant statutory requirements.
6. Contractors to ensure all specified materials, fixtures and fittings are procured to meet all aspects of the project programme and must advise CBRE if any items will not be available in sufficient time and to request further instructions.

Copyright notice:
This and all other documents authored by CBRE and all information and concepts both depicted and implied therein are the sole property of CBRE. Reproduction or transmission in any form is strictly forbidden unless prior permission is obtained in writing from CBRE. Construction based on the depicted information at any time or location not related to this project is strictly forbidden unless prior permission is obtained in writing from CBRE.



Rev	Date	Revision description	Int.
-	-	-	-



CBRE Limited
 St Martins Court | 10 Paternoster Row |
 London | EC4M 7HP
 T: 0207 182 2000 | F: 0207 182 3007 |
 W : www.cbre.com

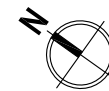
Project:
CIEE
 46-47 Russell Square
 London WC1

Drawing:
Fourth Floor
Existing Plan

Scale: 1:100 @ A3	Drawn: SvM	Date: 11.07.16
Alternate Scale: -	Chkd: SM	Approved: XXX

Status:
Listed Building Consent Application

Project No:	Drawing No: ALB.06	Rev No: -
-------------	------------------------------	---------------------

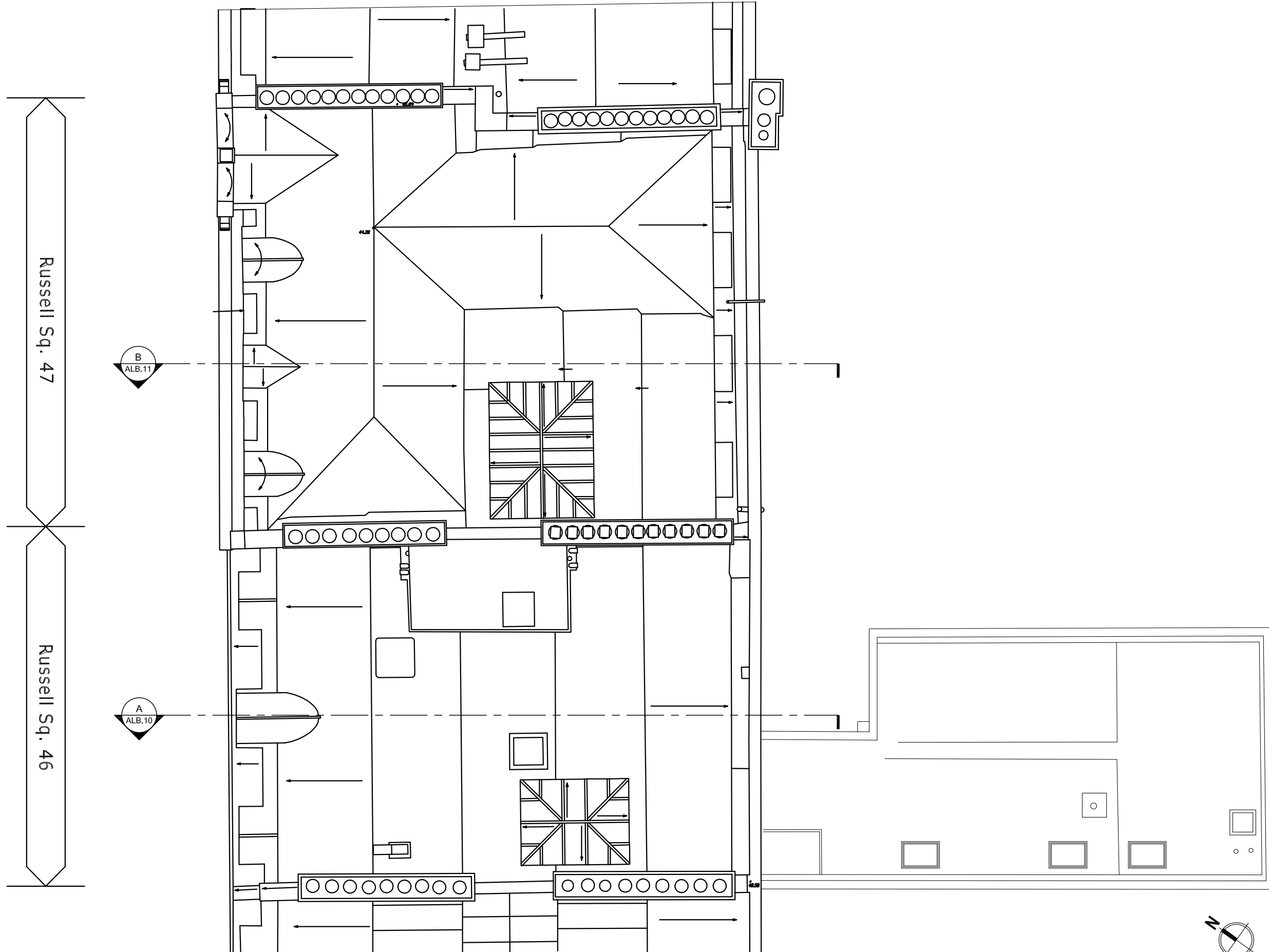


SCALE 1:100@A3

General Notes:

1. No dimension is to be scaled from this drawing. All Contractors must familiarise themselves with site conditions, including checking site dimensions, and must report in writing any discrepancies with the information depicted in this drawing or the specifications. The Contractor shall obtain further instructions from CBRE prior to proceeding with the affected elements.
2. This drawing is to be read in conjunction with other related drawings, Specifications, Schedules and Bill of Materials (the Contract Information) produced and issued by CBRE and other involved parties for this project. The Contractor shall advise in writing of any inconsistencies or contradictions of any of the information contained therein and shall obtain further instructions from CBRE prior to proceeding.
3. Contractors to advise on suitability of all details and to ensure structural integrity, stability and strength of all construction for the intended performance.
4. Contractors to ensure that all specified and implied materials, fixtures and fittings are fabricated and installed in accordance with their manufacturers' recommendations. Contractor is responsible for obtaining all relevant manufacturers' data and related information. Where manufacturers' recommendations contradict or are inconsistent with any of the information contained within the Contract Information, the Contractor shall obtain further instructions from CBRE prior to proceeding.
5. Contractors to ensure that all materials and construction complies with Building Regulations, DDA and CDM Regulations, Environmental Health, Planning and any other relevant statutory requirements.
6. Contractors to ensure all specified materials, fixtures and fittings are procured to meet all aspects of the project programme and must advise CBRE if any items will not be available in sufficient time and to request further instructions.

Copyright notice:
This and all other documents authored by CBRE and all information and concepts both depicted and implied therein are the sole property of CBRE. Reproduction or transmission in any form is strictly forbidden unless prior permission is obtained in writing from CBRE. Construction based on the depicted information at any time or location not related to this project is strictly forbidden unless prior permission is obtained in writing from CBRE.



Rev	Date	Revision description	Int.
-	-	-	-



CBRE Limited
 St Martins Court | 10 Paternoster Row |
 London | EC4M 7HP
 T: 0207 182 2000 | F: 0207 182 3007 |
 W : www.cbre.com

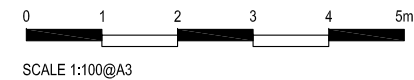
Project:
CIEE
 46-47 Russell Square
 London WC1

Drawing:
Roof
 Existing Plan

Scale: 1:100 @ A3	Drawn: SvM	Date: 11.07.16
Alternate Scale: -	Chkd: SM	Approved: XXX

Status:
Listed Building Consent Application

Project No:	Drawing No: ALB.07	Rev No: -
-------------	------------------------------	---------------------





POSITION OF EXISTING CCTV

Russell Sq. 47

Russell Sq. 46



SCALE 1:100@A3

General Notes:

1. No dimension is to be scaled from this drawing. All Contractors must familiarise themselves with site conditions, including checking site dimensions, and must report in writing of any discrepancies with the information depicted in this drawing or the specifications. The Contractor shall obtain further instructions from CBRE prior to proceeding with the affected elements.
2. This drawing is to be read in conjunction with other related drawings, Specifications, Schedules and Bill of Materials (the Contract Information) produced and issued by CBRE and other involved parties for this project. The Contractor shall advise in writing of any inconsistencies or contradictions of any of the information contained therein and shall obtain further instructions from CBRE prior to proceeding.
3. Contractors to advise on suitability of all details and to ensure structural integrity, stability and strength of all construction for the intended performance.
4. Contractors to ensure that all specified and implied materials, fixtures and fittings are fabricated and installed in accordance with their manufacturers' recommendations. Contractor is responsible for obtaining all relevant manufacturers' data and related information. Where manufacturers' recommendations contradict or are inconsistent with any of the information contained within the Contract Information, the Contractor shall obtain further instructions from CBRE prior to proceeding.
5. Contractors to ensure that all materials and construction complies with Building Regulations, DDA and CDM Regulations, Environmental Health, Planning and any other relevant statutory requirements.
6. Contractors to ensure all specified materials, fixtures and fittings are procured to meet all aspects of the project programme and must advise CBRE if any items will not be available in sufficient time and to request further instructions.

Copyright notice:
This and all other documents authored by CBRE and all information and concepts both depicted and implied therein are the sole property of CBRE. Reproduction or transmission in any form is strictly forbidden unless prior permission is obtained in writing from CBRE. Construction based on the depicted information at any time or location not related to this project is strictly forbidden unless prior permission is obtained in writing from CBRE.

Rev	Date	Revision description	Int.
-	-	-	-



CBRE Limited
St Martins Court | 10 Paternoster Row |
London | EC4M 7HP
T: 0207 182 2000 | F: 0207 182 3007 |
W: www.cbre.com

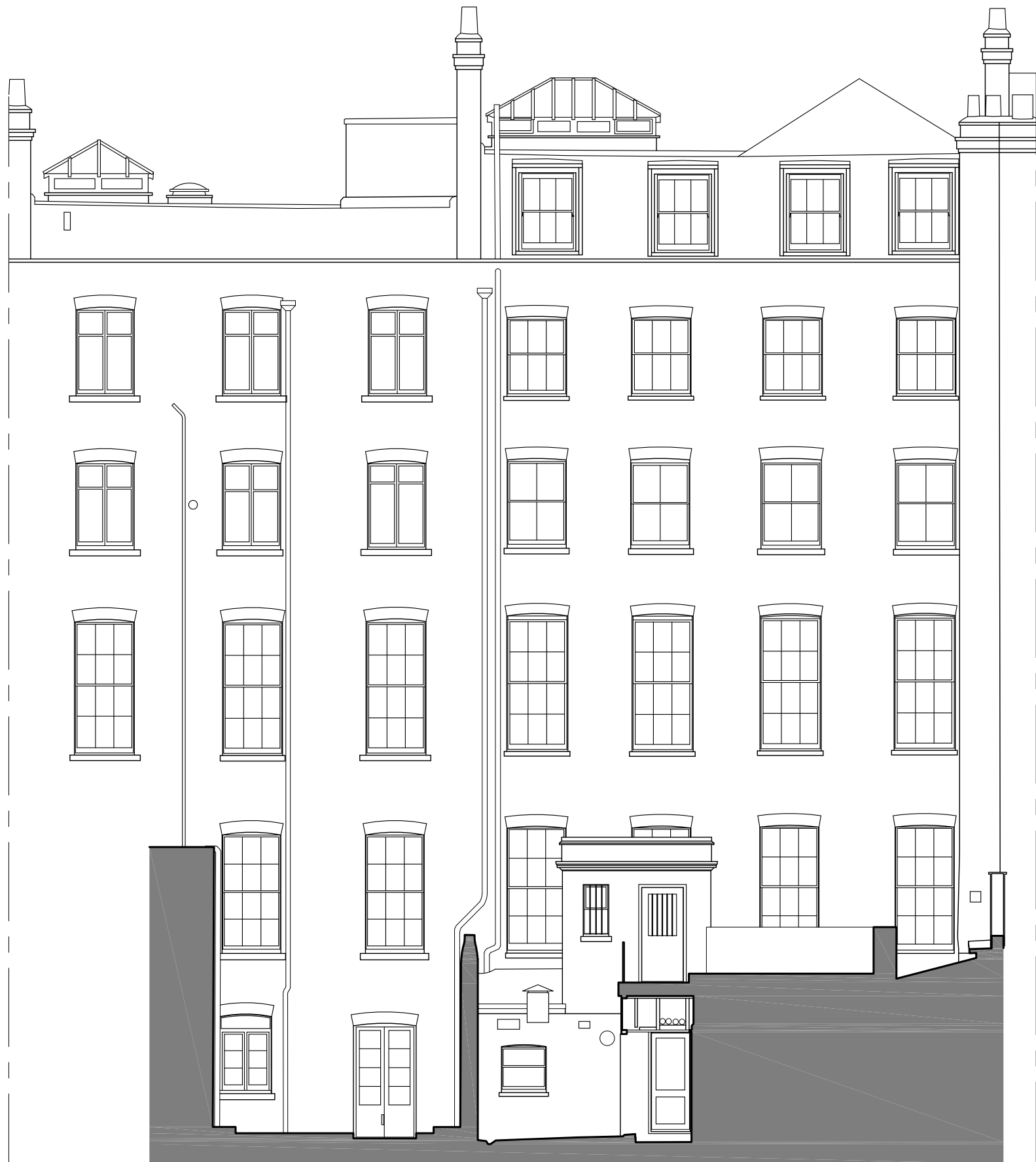
Project:
CIEE
46-47 Russell Square
London WC1

Drawing:
Existing Front Elevation

Scale: 1:100 @ A3	Drawn: SvM	Date: 11.07.16
Alternate Scale: -	Chkd: SM	Approved: XXX

Status:
Listed Building Consent Application

Project No:	Drawing No:	Rev No:
	ALB.08	-

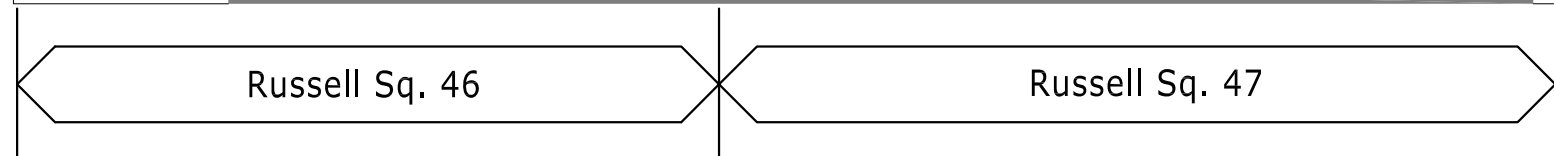


0 1 2 3 4 5m
SCALE 1:100@A3

General Notes:

1. No dimension is to be scaled from this drawing. All Contractors must familiarise themselves with site conditions, including checking site dimensions, and must report in writing any discrepancies with the information depicted in this drawing or the specifications. The Contractor shall obtain further instructions from CBRE prior to proceeding with the affected elements.
2. This drawing is to be read in conjunction with other related drawings, Specifications, Schedules and Bill of Quantities (the Contract Information) produced and issued by CBRE and other involved parties for this project. The Contractor shall advise in writing of any inconsistencies or contradictions of any of the information contained therein and shall obtain further instructions from CBRE prior to proceeding.
3. Contractors to advise on suitability of all details and to ensure structural integrity, stability and strength of all construction for the intended performance.
4. Contractors to ensure that all specified and implied materials, fixtures and fittings are fabricated and installed in accordance with their manufacturers' recommendations. Contractor is responsible for obtaining all relevant manufacturers' data and related information. Where manufacturers' recommendations contradict or are inconsistent with any of the information contained within the Contract Information, the Contractor shall obtain further instructions from CBRE prior to proceeding.
5. Contractors to ensure that all materials and construction complies with Building Regulations, DDA and CDM Regulations, Environmental Health, Planning and any other relevant statutory requirements.
6. Contractors to ensure all specified materials, fixtures and fittings are procured to meet all aspects of the project programme and must advise CBRE if any items will not be available in sufficient time and to request further instructions.

Copyright notice:
This and all other documents authored by CBRE and all information and concepts both depicted and implied therein are the sole property of CBRE. Reproduction or transmission in any form is strictly forbidden unless prior permission is obtained in writing from CBRE. Construction based on the depicted information at any time or location not related to this project is strictly forbidden unless prior permission is obtained in writing from CBRE.



1 EXISTING REAR ELEVATION
Scale 1:50 @A3



2 EXISTING COURTYARD ELEVATION
Scale 1:50 @A3

Rev	Date	Revision description	Int.
-	-	-	-



CBRE Limited
St Martins Court | 10 Paternoster Row |
London | EC4M 7HP
T: 0207 182 2000 | F: 0207 182 3007 |
W: www.cbre.com

Project:
CIEE
46-47 Russell Square
London WC1

Drawing:
Existing Rear Elevation
Existing Courtyard Elevation

Scale: 1:100 @ A3	Drawn: SvM	Date: 11.07.16
Alternate Scale: -	Chkd: SM	Approved: XXX

Status: Listed Building Consent Application		
Project No:	Drawing No: ALB.09	Rev No: -

General Notes:

1. No dimension is to be scaled from this drawing. All Contractors must familiarise themselves with site conditions, including checking site dimensions, and must report in writing of any discrepancies with the information depicted in this drawing or the specifications. The Contractor shall obtain further instructions from CBRE prior to proceeding with the affected elements.
2. This drawing is to be read in conjunction with other related drawings, Specifications, Schedules and Bill of Quantities (the Contract Information) produced and issued by CBRE and other involved parties for this project. The Contractor shall advise in writing of any inconsistencies or contradictions of any of the information contained therein and shall obtain further instructions from CBRE prior to proceeding.
3. Contractors to advise on suitability of all details and to ensure structural integrity, stability and strength of all construction for the intended performance.
4. Contractors to ensure that all specified and implied materials, fixtures and fittings are fabricated and installed in accordance with their manufacturers' recommendations. Contractor is responsible for obtaining all relevant manufacturers' data and related information. Where manufacturers' recommendations contradict or are inconsistent with any of the information contained within the Contract Information, the Contractor shall obtain further instructions from CBRE prior to proceeding.
5. Contractors to ensure that all materials and construction complies with Building Regulations, DDA and CDM Regulations, Environmental Health, Planning and any other relevant statutory requirements.
6. Contractors to ensure all specified materials, fixtures and fittings are procured to meet all aspects of the project programme and must advise CBRE if any items will not be available in sufficient time and to request further instructions.

Copyright notice:
This and all other documents authored by CBRE and all information and concepts both depicted and implied therein are the sole property of CBRE. Reproduction or transmission in any form is strictly forbidden unless prior permission is obtained in writing from CBRE. Construction based on the depicted information at any time or location not related to this project is strictly forbidden unless prior permission is obtained in writing from CBRE.



Rev	Date	Revision description	Int.
-	-	-	-



CBRE Limited
St Martins Court | 10 Paternoster Row |
London | EC4M 7HP
T: 0207 182 2000 | F: 0207 182 3007 |
W : www.cbre.com

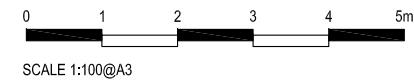
Project:
CIEE
46-47 Russell Square
London WC1

Drawing:
Existing Section A-A

Scale:	Drawn:	Date:
1:100 @ A3	SvM	11.07.16
Alternate Scale:	Chkd:	Approved:
-	SM	XXX

Status:
Listed Building Consent Application

Project No:	Drawing No:	Rev No:
-	ALB.10	-



SCALE 1:100@A3



General Notes:

- No dimension is to be scaled from this drawing. All Contractors must familiarise themselves with site conditions, including checking site dimensions, and must report in writing any discrepancies with the information depicted in this drawing or the specifications. The Contractor shall obtain further instructions from CBRE prior to proceeding with the affected elements.
- This drawing is to be read in conjunction with other related drawings, Specifications, Schedules and Bill of Quantities (the Contract Information) produced and issued by CBRE and other involved parties for this project. The Contractor shall advise in writing of any inconsistencies or contradictions of any of the information contained therein and shall obtain further instructions from CBRE prior to proceeding.
- Contractors to advise on suitability of all details and to ensure structural integrity, stability and strength of all construction for the intended performance.
- Contractors to ensure that all specified and implied materials, fixtures and fittings are fabricated and installed in accordance with their manufacturers' recommendations. Contractor is responsible for obtaining all relevant manufacturers' data and related information. Where manufacturers' recommendations contradict or are inconsistent with any of the information contained within the Contract Information, the Contractor shall obtain further instructions from CBRE prior to proceeding.
- Contractors to ensure that all materials and construction complies with Building Regulations, DDA and CDM Regulations, Environmental Health, Planning and any other relevant statutory requirements.
- Contractors to ensure all specified materials, fixtures and fittings are procured to meet all aspects of the project programme and must advise CBRE if any items will not be available in sufficient time and to request further instructions.

Copyright notice:
This and all other documents authored by CBRE and all information and concepts both depicted and implied therein are the sole property of CBRE. Reproduction or transmission in any form is strictly forbidden unless prior permission is obtained in writing from CBRE. Construction based on the depicted information at any time or location not related to this project is strictly forbidden unless prior permission is obtained in writing from CBRE.

Rev	Date	Revision description	Int.
-	-	-	-



CBRE Limited
 St Martins Court | 10 Paternoster Row |
 London | EC4M 7HP
 T: 0207 182 2000 | F: 0207 182 3007 |
 W : www.cbre.com

Project:
CIEE
 46-47 Russell Square
 London WC1

Drawing:
 Existing Section B-B

Scale: 1:100 @ A3	Drawn: SvM	Date: 11.07.16
Alternate Scale: -	Chkd: SM	Approved: XXX

Status:
 Listed Building Consent Application

Project No:	Drawing No: ALB.11	Rev No: -
-------------	------------------------------	---------------------



SCALE 1:100@A3



Photo 1
BASEMENT: DOUBLE DOORS to BE FITTED within EXISTING OPENING



Photo 2
GROUND FLOOR: NON-ORIGINAL STUD PARTITION to BE REMOVED



Photo 3
GROUND FLOOR: ORIGINAL OPENING to BE REINSTATED & DOUBLE DOOR FITTED



Photo 4
FIRST FLOOR: CUPBOARD DOORS w/ SIDE PANELS to BE ADDED



Photo 5
FIRST FLOOR: NON-ORIGINAL PARTITION to BE REMOVED; U/S of BULKHEAD RAISED



Photo 6
SECOND FLOOR: OPENING to BE CREATED in NON-ORIGINAL STUD PARTITION & SINGLE DOOR to BE FITTED



Photo 7
SECOND FLOOR: SLIDING PARTITION to BE INSTALLED BELOW DOWNSTAND



Photo 8
SECOND FLOOR: SLIDING PARTITION to BE INSTALLED BELOW DOWNSTAND

General Notes:

- No dimension is to be scaled from this drawing. All Contractors must familiarise themselves with site conditions, including checking site dimensions, and must report in writing of any discrepancies with the information depicted in this drawing or the specifications. The Contractor shall obtain further instructions from CBRE prior to proceeding with the affected elements.
- This drawing is to be read in conjunction with other related drawings, Specifications, Schedules and Bill of Quantities (the Contract Information) produced and issued by CBRE and other involved parties for this project. The Contractor shall advise in writing of any inconsistencies or contradictions of any of the information contained therein and shall obtain further instructions from CBRE prior to proceeding.
- Contractors to advise on suitability of all details and to ensure structural integrity, stability and strength of all construction for the intended performance.
- Contractors to ensure that all specified and implied materials, fixtures and fittings are fabricated and installed in accordance with their manufacturers' recommendations. Contractor is responsible for obtaining all relevant manufacturers' data and related information. Where manufacturers' recommendations contradict or are inconsistent with any of the information contained within the Contract Information, the Contractor shall obtain further instructions from CBRE prior to proceeding.
- Contractors to ensure that all materials and construction complies with Building Regulations, DDA and CDM Regulations, Environmental Health, Planning and any other relevant statutory requirements.
- Contractors to ensure all specified materials, fixtures and fittings are procured to meet all aspects of the project programme and must advise CBRE if any items will not be available in sufficient time and to request further instructions.

Copyright notice:
This and all other documents authored by CBRE and all information and concepts both depicted and implied therein are the sole property of CBRE. Reproduction or transmission in any form is strictly forbidden unless prior permission is obtained in writing from CBRE. Construction based on the depicted information at any time or location not related to this project is strictly forbidden unless prior permission is obtained in writing from CBRE.

Rev	Date	Revision description	Int.
-	-	-	-



CBRE Limited
St Martins Court | 10 Paternoster Row |
London | EC4M 7HP
T: 0207 182 2000 | F: 0207 182 3007 |
W: www.cbre.com

Project:
CIEE
46-47 Russell Square
London WC1

Drawing:
Photographs
Existing

Scale: 1:1250 @ A3	Drawn: SvM	Date: 11.07.16
Alternate Scale: -	Chkd: SM	Approved: XXX

Status:
Listed Building Consent Application

Project No:	Drawing No: ALB.12	Rev No: -
-------------	------------------------------	--------------