

94 HAVERSTOCK HILL, LONDON



INTERNAL FLAT DOORS (Where applicable)	FIRE DOORS	All internal doors to be Howdens smooth 4 panel door or fire check doors as indicated in covering document
NON FIRE DOORS		
Door Reference	Door Reference, FD30	Door and Frame size
D1	D1 F	35 x 838 x 1981, 130 & 160 door frame 19 x 12mm planed stops
Habitable Rooms and Main Bathrooms		44 x 838 x 1981: 130 & 160df with intumescent strip 25 x 12mm screwed stops with 38mm long No. 8 screws at 600mm ctrs 75mm from top and bottom.
D2	D2 F	35 x 762 x 1981, 130 & 160 door frame 19 x 12mm planed stops
Ensuite/Stores		44 x 762 x 1981: 130 & 160df with intumescent strip 25 x 12mm screwed stops with 38mm long No. 8 screws at 600mm ctrs 75mm from top and bottom.
D3	D3 F	35 x 686 x 1981, 130 & 160 door frame 19 x 12mm planed stops
Stores		44 x 686 x 1981: 130 & 160df with intumescent strip 25 x 12mm screwed stops with 38mm long No. 8 screws at 600mm ctrs 75mm from top and bottom.
D4	D4 F	35 x 610 x 1981, 130 & 160 door frame 19 x 12mm planed stops
Stores		44 x 610 x 1981: 130 & 160df with intumescent strip 25 x 12mm screwed stops with 38mm long No. 8 screws at 600mm ctrs 75mm from top and bottom.
D5	D5 F	35 x 533 x 1981, 130 & 160 door frame 19 x 12mm planed stops
Stores		44 x 533 x 1981: 130 & 160df with intumescent strip 25 x 12mm screwed stops with 38mm long No. 8 screws at 600mm ctrs 75mm from top and bottom.
D6	D6 F	35 x 457 x 1981, 130 & 160 door frame 19 x 12mm planed stops
Stores		44 x 457 x 1981: 130 & 160df with intumescent strip 25 x 12mm screwed stops with 38mm long No. 8 screws at 600mm ctrs 75mm from top and bottom.
D7 (Wheelchair)	N/A	
D8 (Pair) Habitable Rooms	D8 F Pair	2 no. 44 x 762 x 1981: 130 & 160df with intumescent strip 25 x 12mm screwed stops with 38mm long No. 8 screws at 600mm ctrs 75mm from top and bottom.
IMPORTANT NOTE: DOOR LININGS Standard Door references are noted above. Where different thickness frame utilised, non-standard frame thickness to be included in reference i.e. D1FA'100 (100mm), D1FA'90 (90mm).		
IRONMONGERY SCHEDULE		
A- livingroom, kitchen, dining room, study, bedroom	A	1 1/2 pairs 76mm butt hinges, 65 mm tubular mortice latch, Ball Handle on rose
B- Bathroom, Cloakroom, En-suite	B	N/A
C- linen cupboard, wardrobe	C	1 1/2 pair 76mm hinges, 65 mm Architectural lock with bolt through turn, and Ball handle on rose 1 no. nylon roller catch, Ball Handle on rose (1 1/2 hinges to be supplied to linen cupboard door)
D- Double Door	D	3 pairs 76mm butt hinges 65mm tubular mortice latch 2 no. lever on rose 2 no. 152 x 19mm flush fixed bolts fixed top and bottom
Door stop to be supplied where marked on Proposed Floor Plans (')		

STANDARD DOOR SCHEDULES - APPENDIX E	EXTERNAL & COMMUNAL DOORS	Door Set Complete with Ironmongery
Location	Individual flat entrance	Door set comes complete ironmongery 44 x 838x1981mm Door 1 1/2 pairs 100mm Butt Hinges / 1 No Overhead Door Closer Union 1158 cylinder roller dead bolt rim right latch, 1/3 from top of door in accordance with NHBC Standards 6.7 (D4) to BS 3621 5 lever roller latch bolt with bowtie keep and thumb turn BS 8621:2004 1/3 from top of door in accordance with NHBC Standards 6.7 (D4) Flush Nil Door Escapement Thumbturn & release / Flush bolt / 32 dia Knob
Door type	Howdens smooth 4 panel fire check door FD305; Resistance to the passage of sound to achieve a sound reduction or 29dB R.W in accordance with Part E and fire door set to be provided with fire test certificates in accordance with Part B Appendix B	
Door and frame size	44 x 838x1981mm Door 932* x2035mm frame 59x69mm with 18mm rebate out of solid to BS-476 part 8, 1972, smoke seals and intumescent strips. * Frame size/thickness adjusted to suit opening.	
S/O 940mm *		

DOOR SCHEDULE

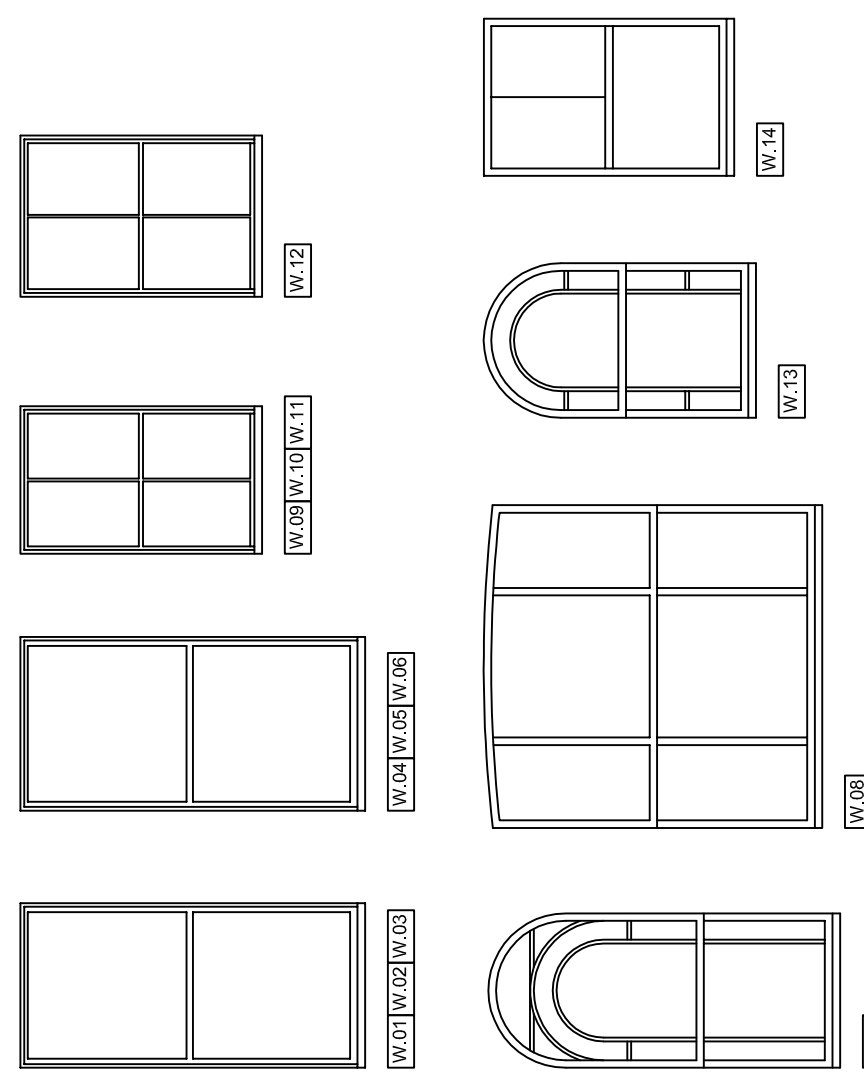
SCALE: NTS

IMPORTANT NOTES:

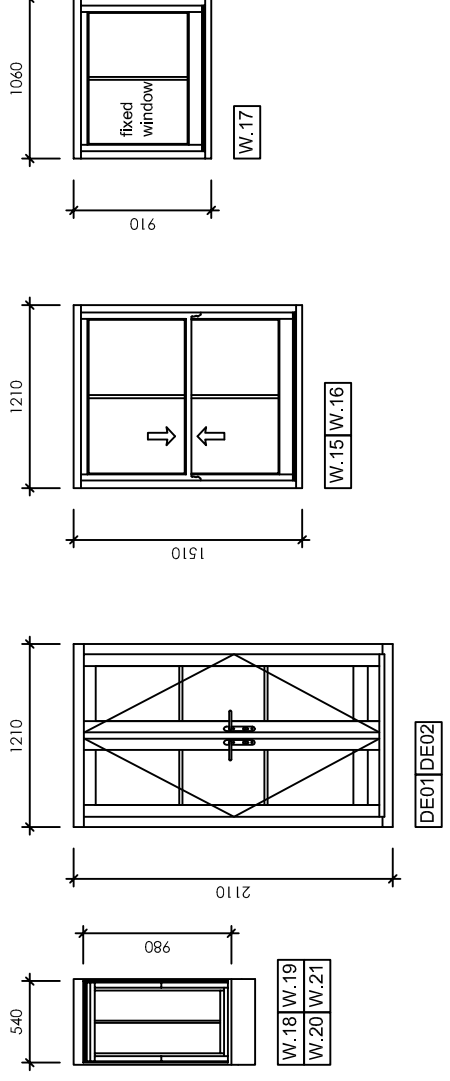
ALL WINDOW & DOOR DIMENSIONS INDICATED ARE STRUCTURAL OPENING SIZES. A 5MM NOMINAL BUILD-IN TOLERANCE TO BE PROVIDED

For glazing specification refer to general construction specification section
For External Joinery specification requirement refer to general construction specification section

EXISTING WINDOWS



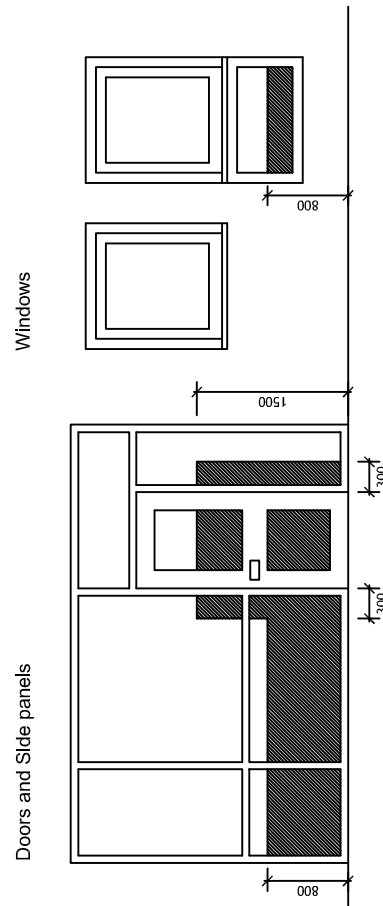
NEW WINDOWS



PROPOSED WINDOW SCHEDULE

SCALE 1:50 @ A3

SAFETY GLASS, CRITICAL LOCATION IN INTERNAL AND EXTERNAL WALLS



MGA McGregor Associates

Chartered Architects

10 Remond Place,
Mablethorpe, Kent ME15 6LE
T: 01622 768407
email: info@mgakent.co.uk

MGA McGregor Associates

client
Haverstock Hill Ltd
Wescott House
35 Portland Place,
London, W1B 1AE

project
New Residential Development
94 Haverstock Hill
London, W9 2BD

drawing
PLANNING DRAWING
Window and Door Schedule

date
Sept 2016

scale
1:50@A3

checked
DMG

job no
2016_03

drawing no
PL 47

rev