

Do not scale from this drawing. Verify all dimensions on site. Drawing should be read in conjunction with information from all other design consultants and contractors. All drawings in digital format are for reference only, paper copies are available on request.

PLANNING
Information only
© Maccreanor Lavington Architects

USES KEY

- Classrooms
- Shared Resource Spaces
- Halls/Community
- Administration
- Ancillary
- Circulation

School Ownership Boundary

NOTES:

Layout based on the incorporation of summer 2014 works. Final extent and locations to be confirmed by summer works contractor.

C5	Planning condition discharge	TO	22-09-16
C4	Final construction issue	SN	13-05-16
C3	Revised Gate Position	MH	22.03.16
C2	Construction issue	LB	08-12-14
C1	Contract set issue	LB	26-11-14
T1	Issued for Tender	LB	22-08-14
B	GAs updates incorporated	LB	30-04-14
A	Revised Yr 1 and Accessible WC	MH	28-07-14

Rev Details Drwn Date

Holy Trinity + St Silas Primary School

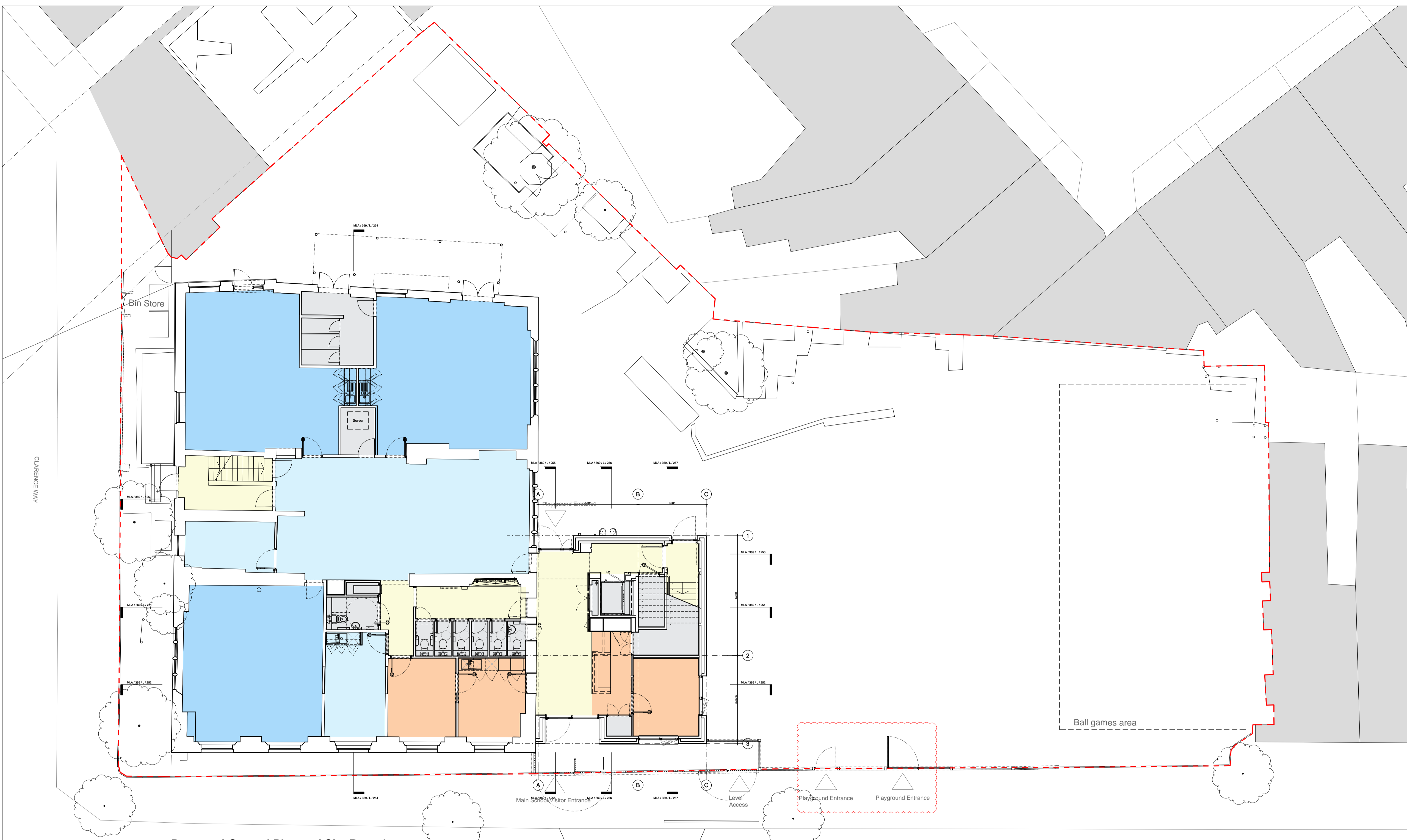
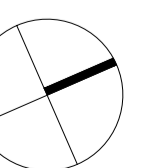
Client: Holy Trinity + St Silas Primary School
 Title: Proposed Ground and Basement Floor Plans
 Proposed Building
 Scale: 1:100 @ A1 / 1:200 @ A3
 Date: 27-03-2014 Drawn: MH / RB

MLA / 369 / L / 110 / Rev C5

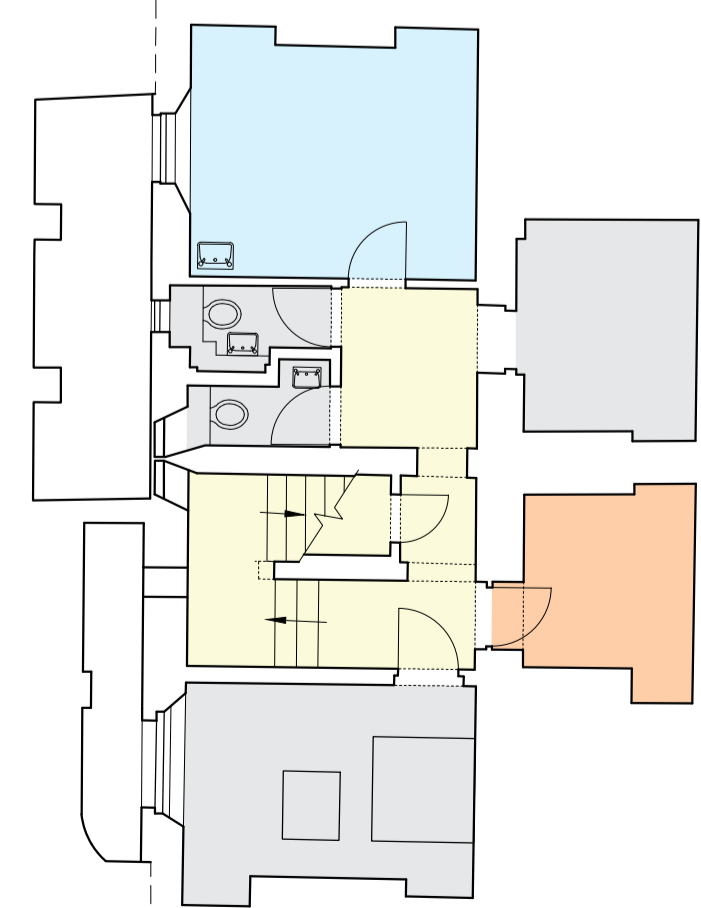
MaccreanorLavington

3rd Floor
 19-21 Nile Street
 London N1 7LL

t +44(0)207 336 73 53
 f +44(0)207 336 76 55
 e uk@ml-architects.com



Proposed Ground Plan and Site Boundary



Proposed Basement Floor Plan