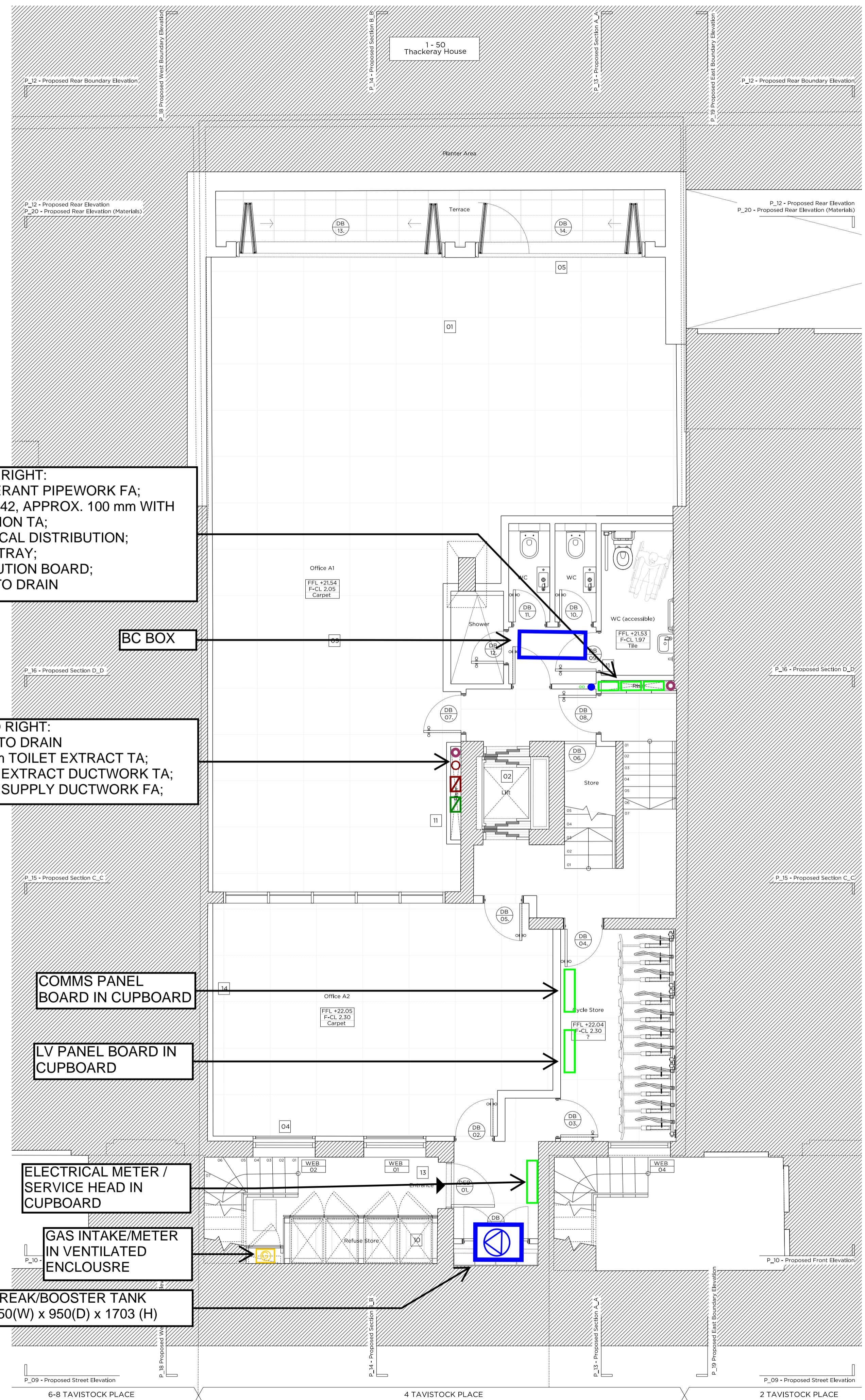


Demolition Lower Ground Floor Plan



Proposed Lower Ground Floor Plan

LEFT TO RIGHT:
REFRIGERANT PIPEWORK FA;
BCWS: Ø42, APPROX. 100 mm WITH
INSULATION TA;
ELECTRICAL DISTRIBUTION;
COMMS TRAY;
DISTRIBUTION BOARD;
SVP FA TO DRAIN

LEFT TO RIGHT:
SVP FA TO DRAIN
Ø150 mm TOILET EXTRACT TA;
200x200 EXTRACT DUCTWORK TA;
200x200 SUPPLY DUCTWORK FA;

COMMS PANEL
BOARD IN CUPBOARD

LV PANEL BOARD IN
CUPBOARD

ELECTRICAL METER /
SERVICE HEAD IN
CUPBOARD

GAS INTAKE/METER
IN VENTILATED
ENCLOSURE

BREAK/BOOSTER TANK
750(W) x 950(D) x 1703 (H)

- Legend**
- Electrical Meter
 - Distribution Board/Consumer Unit
 - Lighting Dimming Rack
 - Satellite
 - AV Rack
 - Fire Alarm Panel
 - Intruder Alarm Panel
 - Electric Meter
 - Boiler
 - Water Heater
 - Radiator
 - Towel Rail Wet/Electric
 - Wet Under Floor Heating
 - Electric Under Floor Heating
 - Trench Heater
 - Water Softener
 - Combined Booster & Break Tank
 - Water Meter
 - Gas Meter
 - Extract Fan
 - VRF Condenser
 - Fan Coil Unit (FCU)
 - FCU Pipework
 - FCU Supply Ductwork
 - FCU Extract Ductwork
 - Service Trench
 - Heating Manifold
 - Mechanical Ventilation Heat Recovery Unit (MVHR)
 - MVHR Supply/ Intake
 - MVHR Extract/Exhaust
 - Noise Attenuator
 - Cooker Hood
 - Grille/Diffuser
 - Shadow Gap
 - Ceiling Mounted Extract Air Valve
 - Air Brick
 - Acoustic Louvre
 - Acoustic Enclosure
 - LTHW Flow/Return
 - MCW (BCWS)
 - SVP
 - Flue (single)
 - Flue (twin)
 - Hose Union Bib Tap
 - Dry Riser

CUNDALL

Project: 4 Tavistock Place II
 Project No: 1013779 Drawing Title: Lower Ground Floor Services Layout
 Drawing No: 1013779-ME-LG-01, Rev A
 Drawn By: VFG Check By: SL Verified By: IM
 Date: 2016-09-02