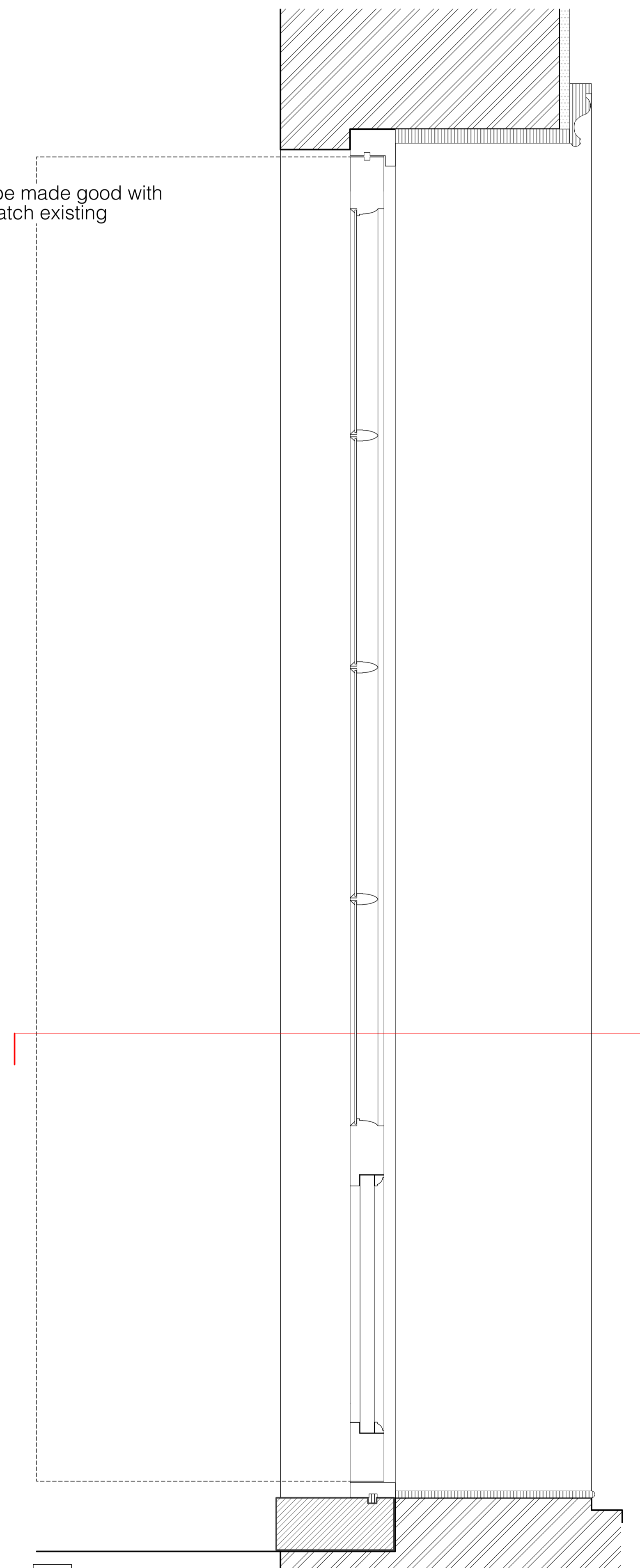


Reveals to be made good with render to match existing



1. This drawing is the property of RRA Architects Ltd. and is not to be reproduced in part or whole without prior expressed permission of RRA Architects Ltd.  
 2. Any disclosure to be reviewed by the Architect.  
 3. This drawing is to be read in conjunction with all relevant Specifications and other documents forming part of the Contract.  
 4. The drawing is copyright and is not to be reproduced in part or whole without prior expressed permission of RRA Architects Ltd.

Revision Description	Date	Check	Rev
Amendments to annotation for validation	20.09.16	-	A



RRA Architects Ltd.

10 Barley Mow Passage  
London  
W4 4PH

T 01432 278707  
E info@rra-arch.com

www.rra-arch.com

London  
T 020 7377 5458

Hereford  
T 01432 278707

Cheltenham  
T 01242 269374

Client  
Lambert Smith Hampton.

Project  
62a Oakley Square, London, NW1 1NJ.

Drawing Title  
Proposed Replacement Rear Door

Status	Date	Drawn By
Planning.	Sept 2016	FH
Scale	Drawing Number	Revision
1:5@A1 / 1:10@A3	384(0)005	-