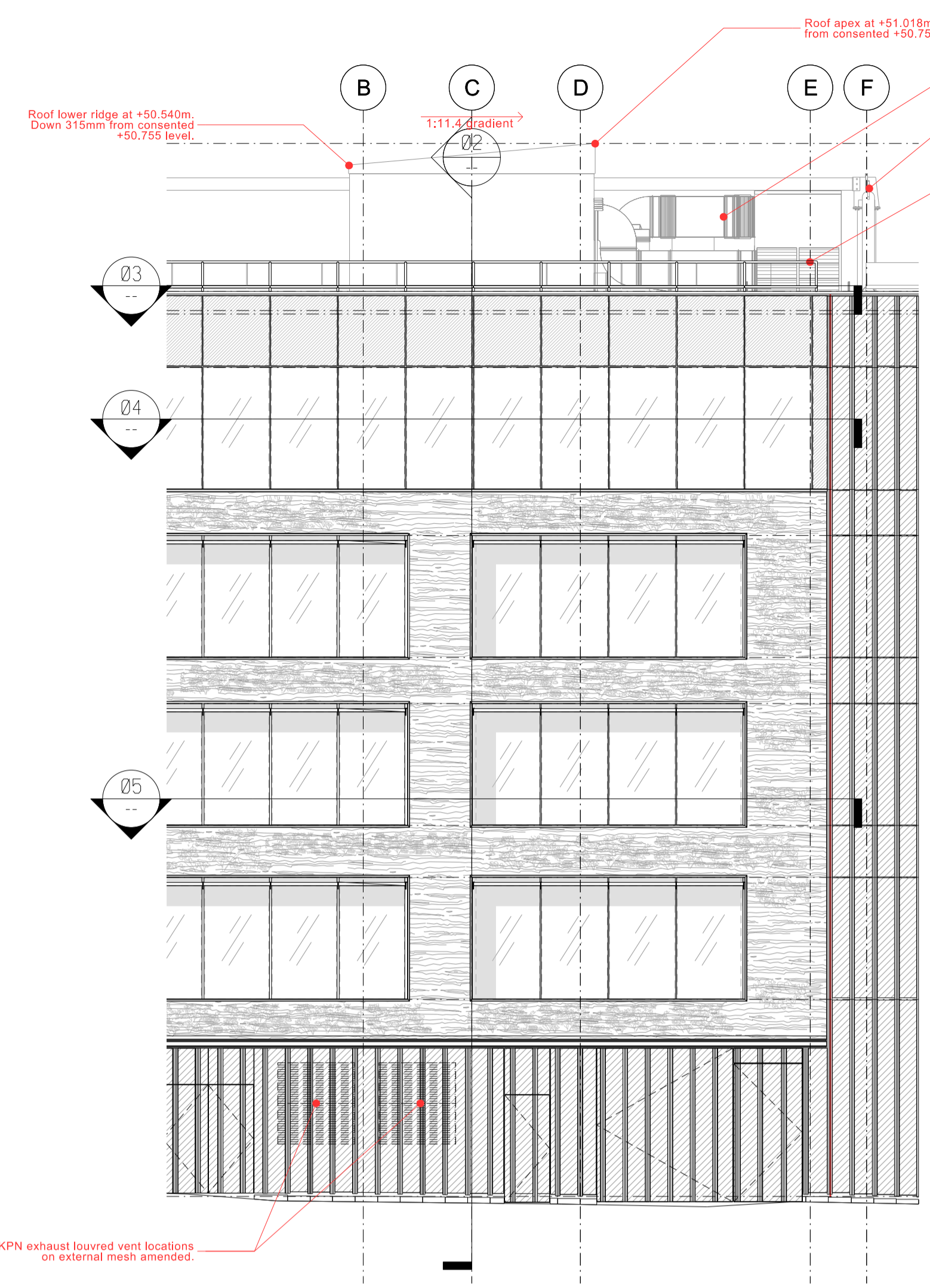
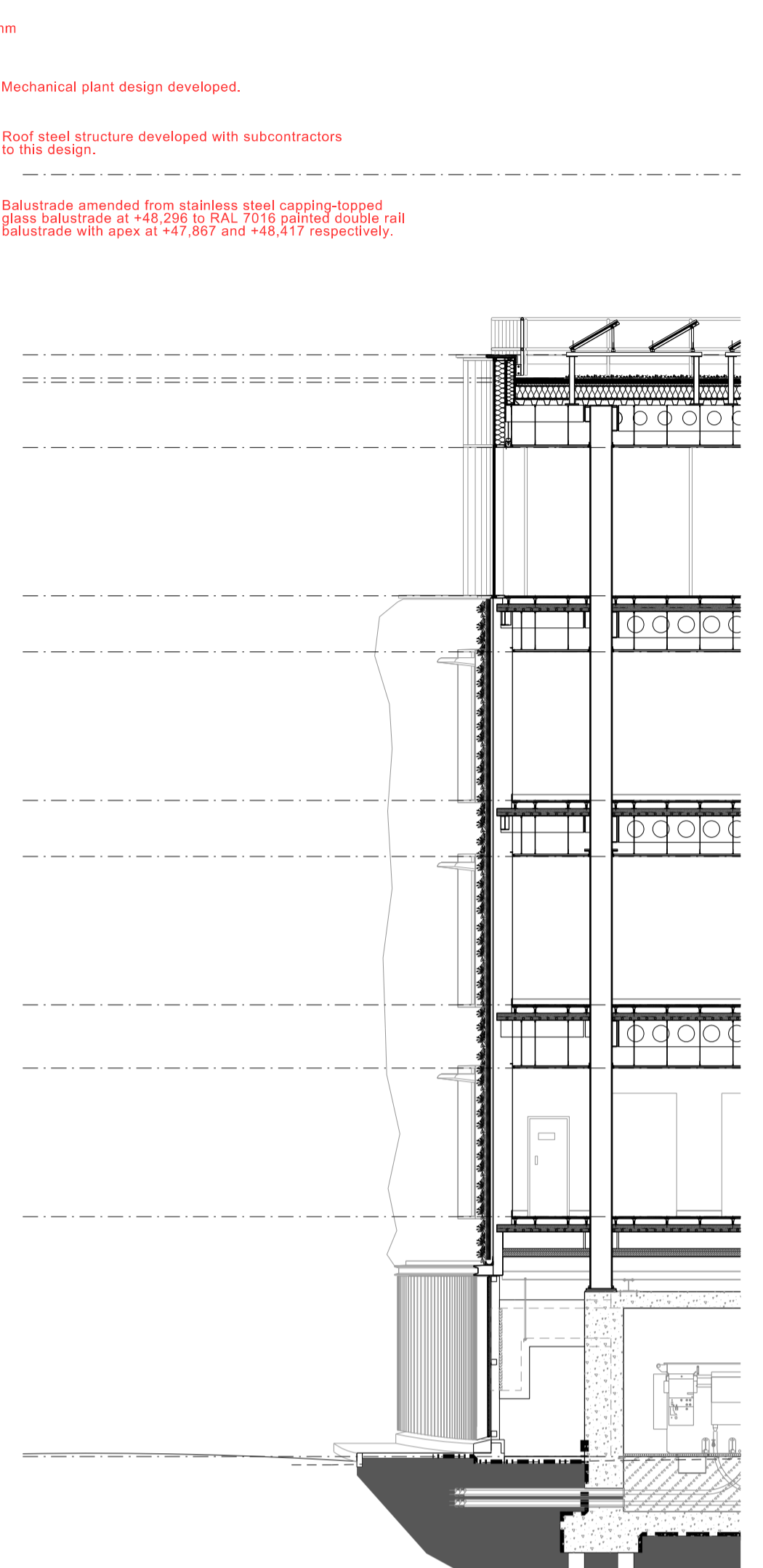


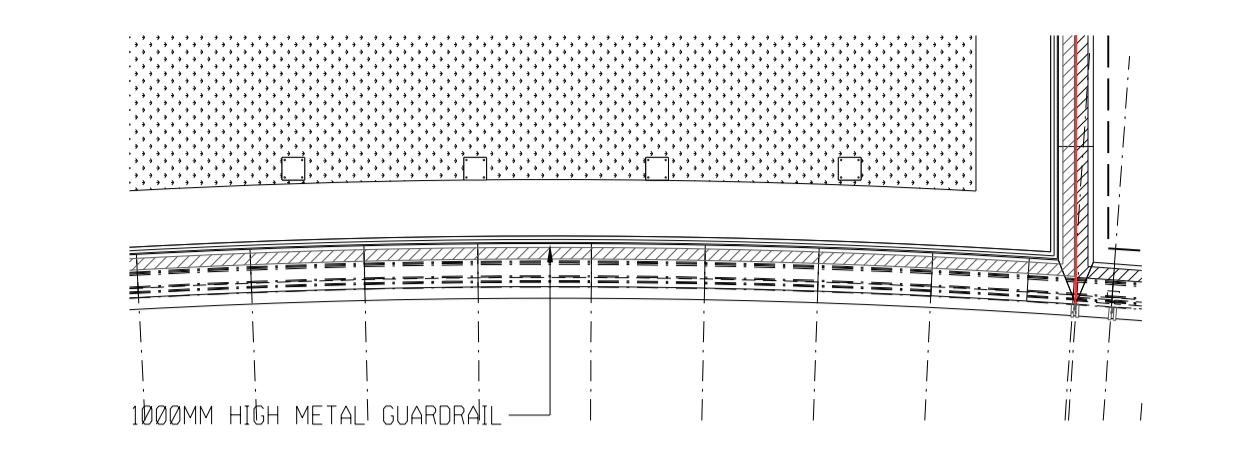
Copyright of this drawing is vested in Splus Architects and it must not be copied or reproduced without written consent. Figures and dimensions are to be taken from this drawing. Do not scale from this drawing. All Contractors must refer to the site and are responsible for checking all dimensions before starting work. Splus Architects are to be advised of any variation between drawings and site conditions. This drawing is for information only and should not be used for construction. All dimensions and levels shall be based on the datum shown on the drawing. **PRINT DRAWING IN COLOUR**



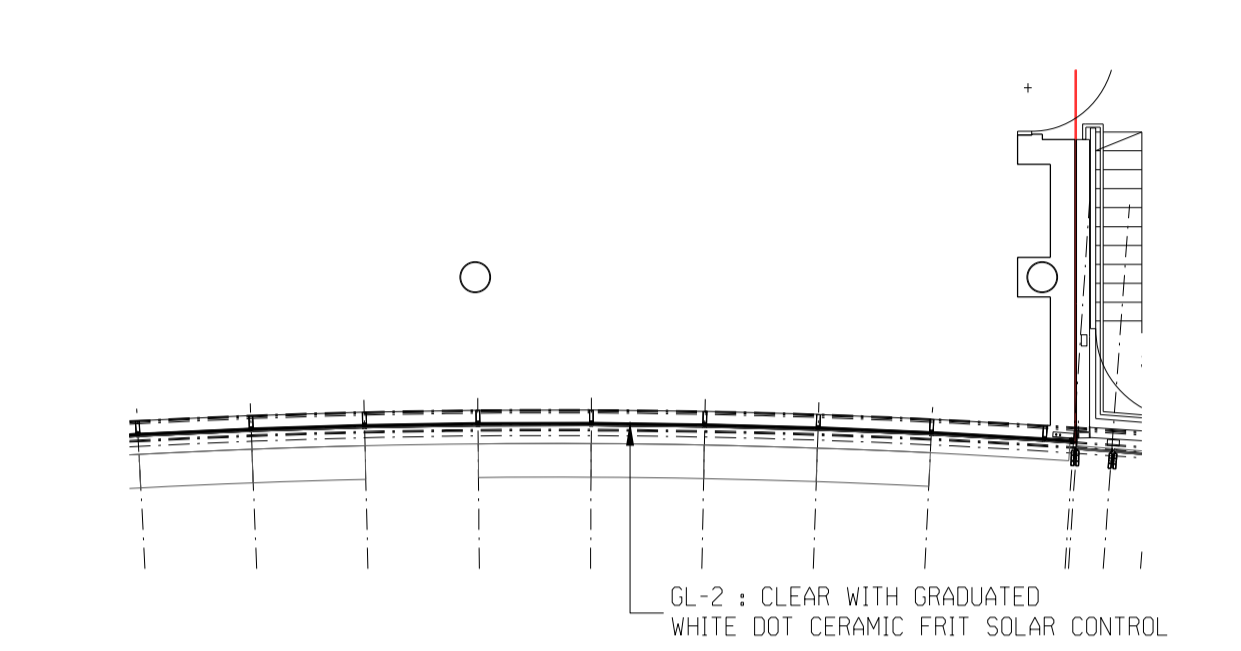
01 PARTIAL ELEVATION
1 : 100



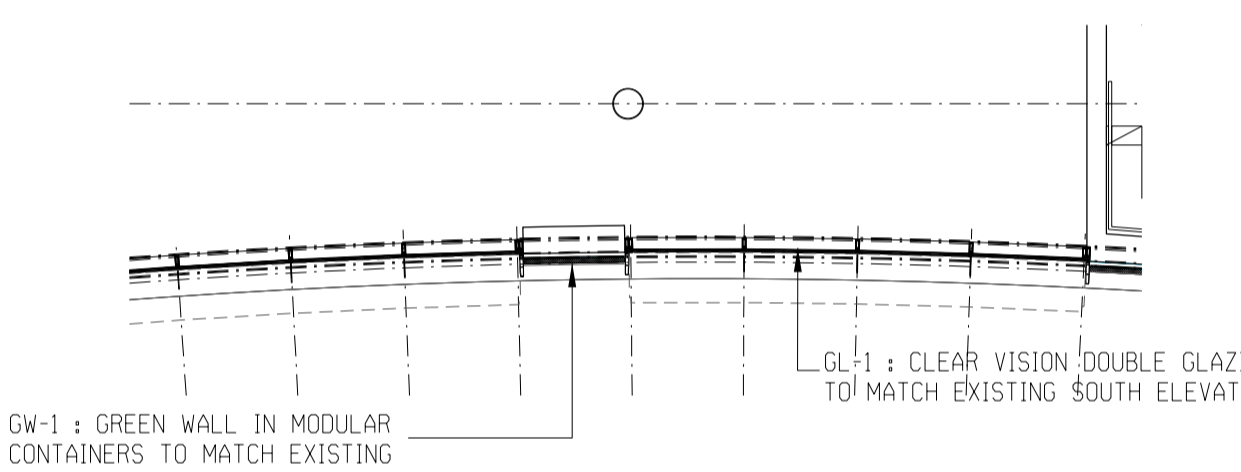
02 SECTION
1 : 100



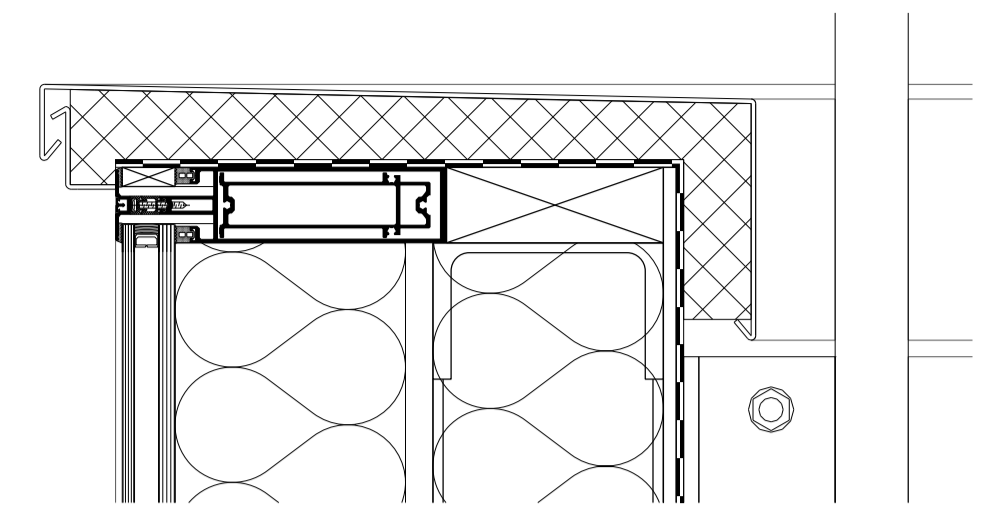
03 PART ROOF PARAPET LEVEL
1 : 100



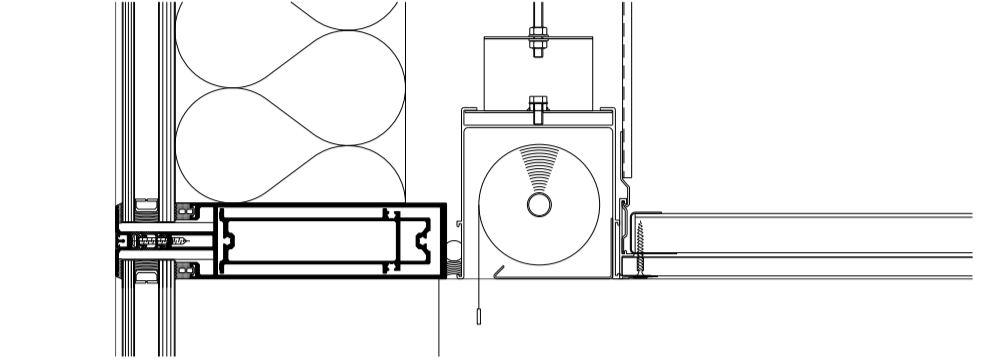
04 PART PLAN UPPER LEVEL
1 : 100



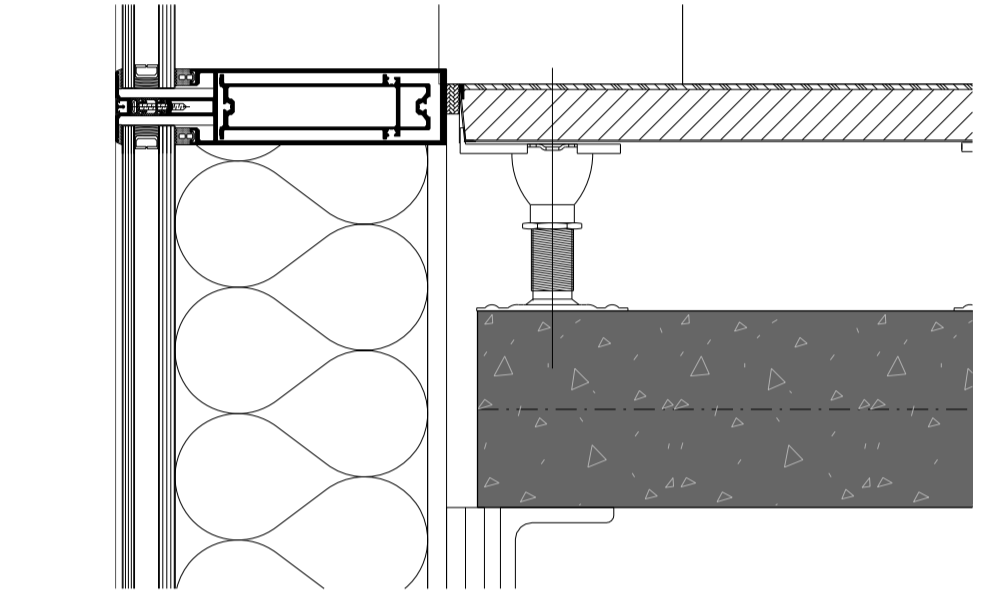
05 PART PLAN LOWER LEVEL
1 : 100



PARAPET HEAD DETAIL

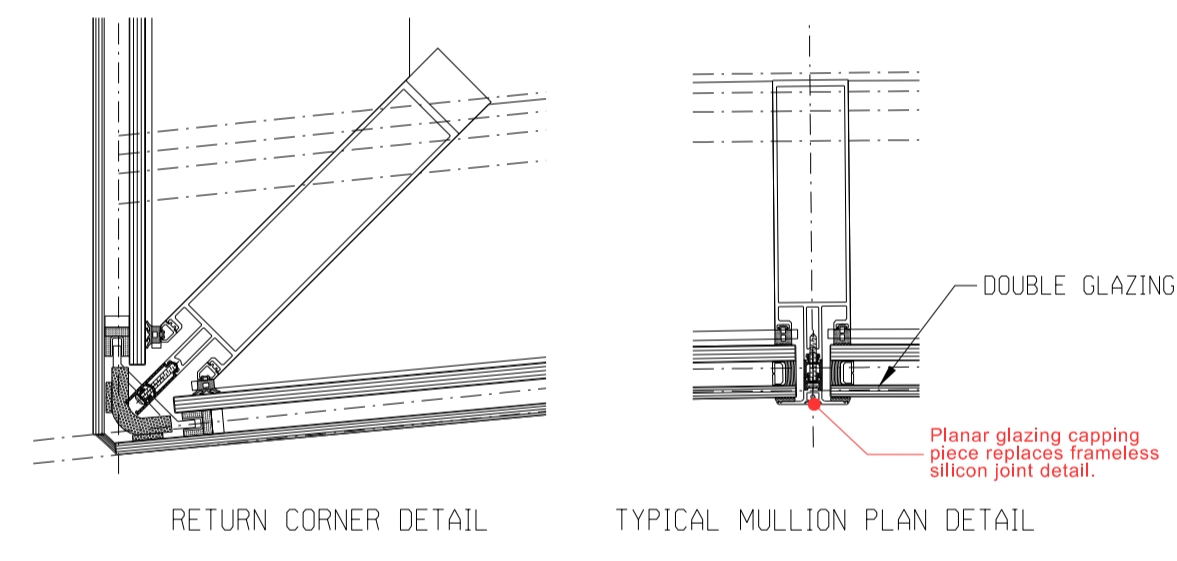


SUSPENDED CEILING LEVEL DETAIL

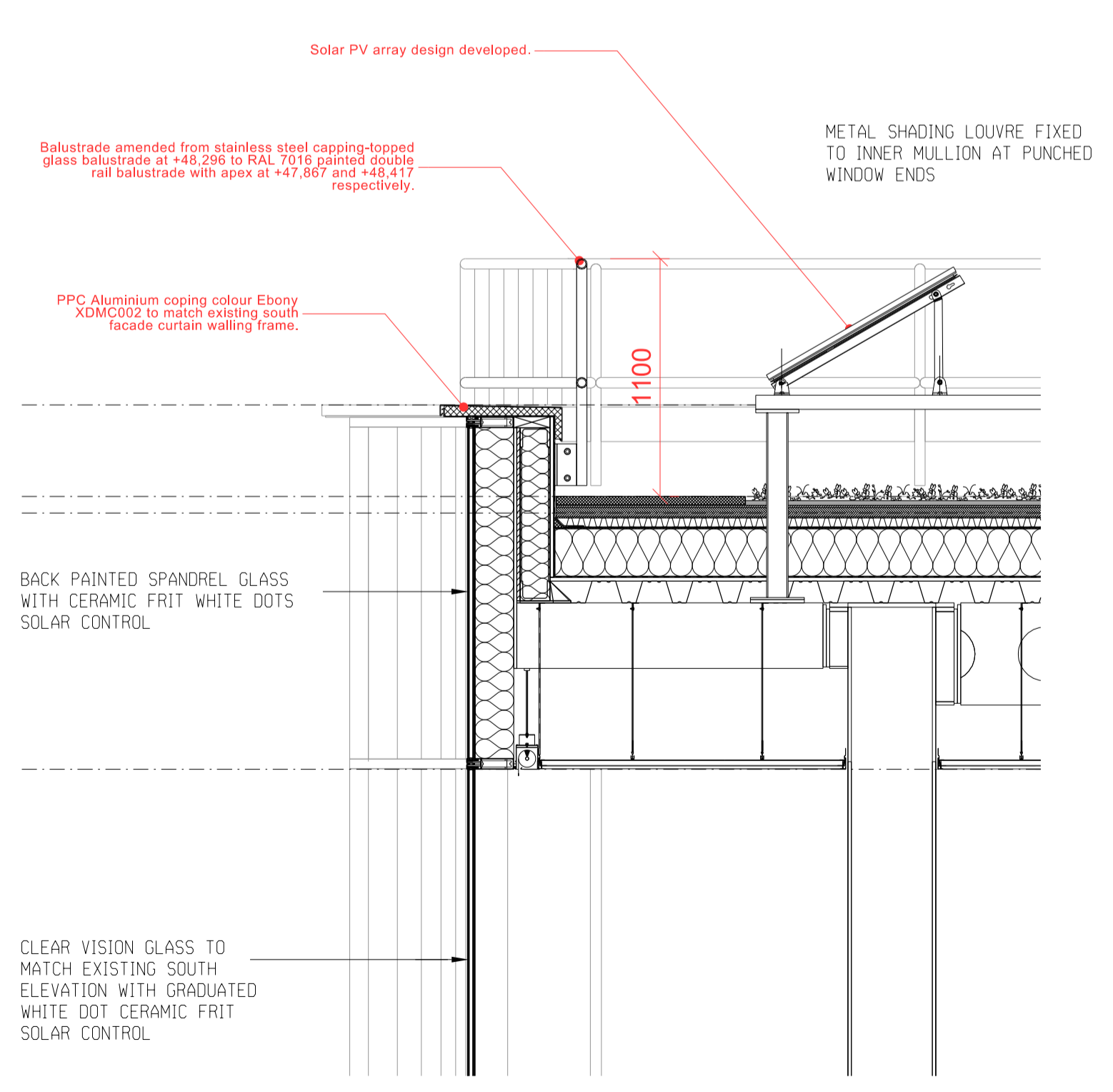


FINISH FLOOR LEVEL DETAIL

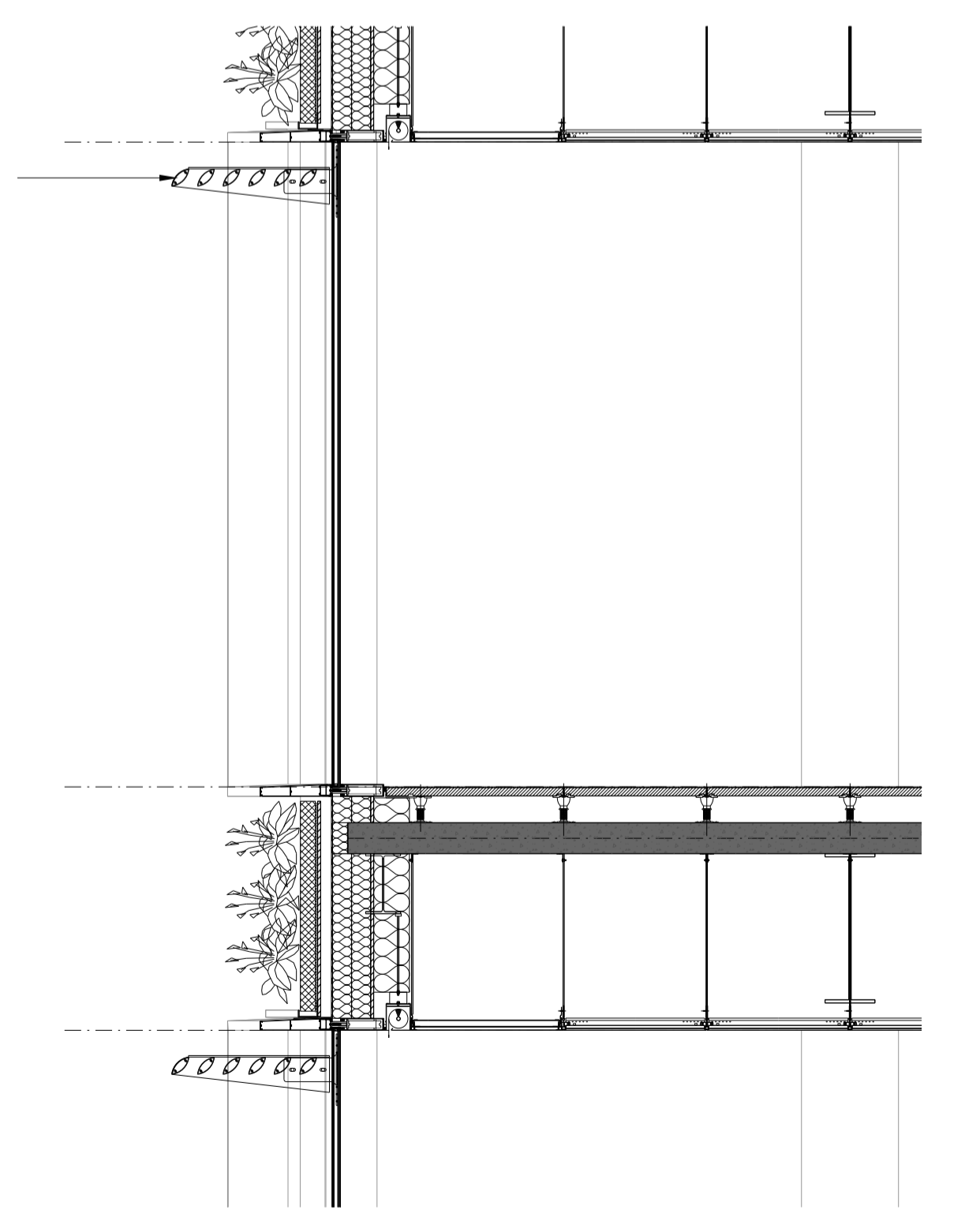
09 SECTION DETAILS - MULLIONS
1 : 5



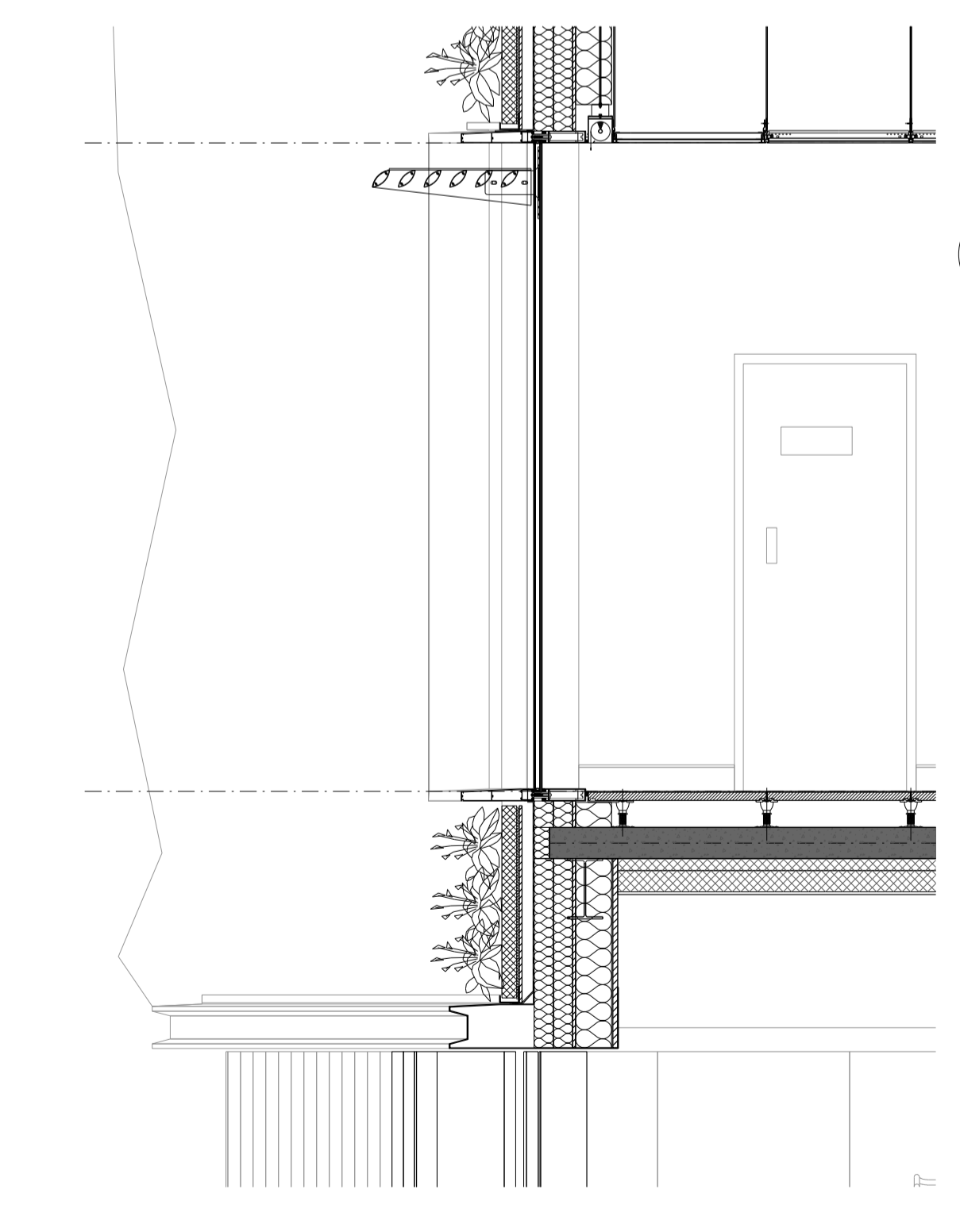
10 PLAN DETAILS - MULLIONS
1 : 5



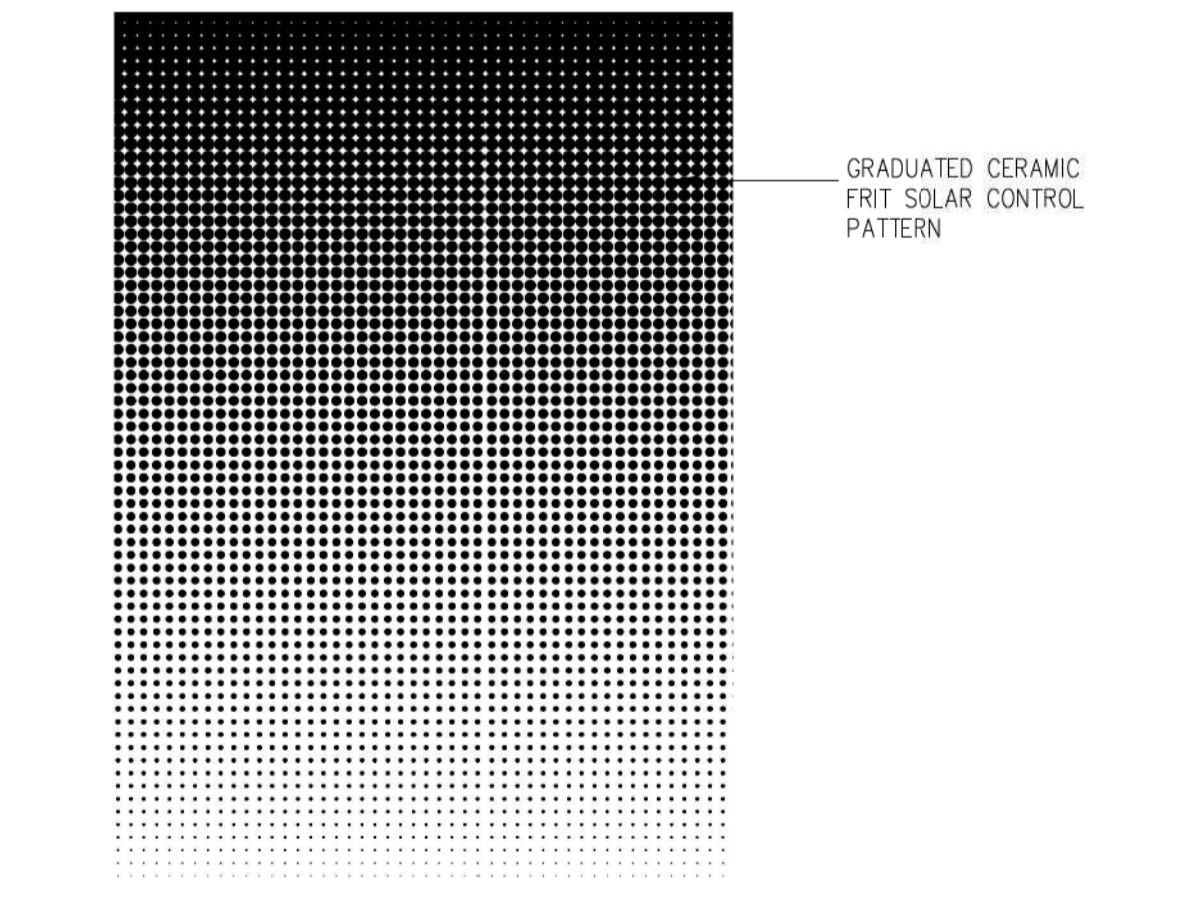
06 PARAPET DETAIL
1 : 25



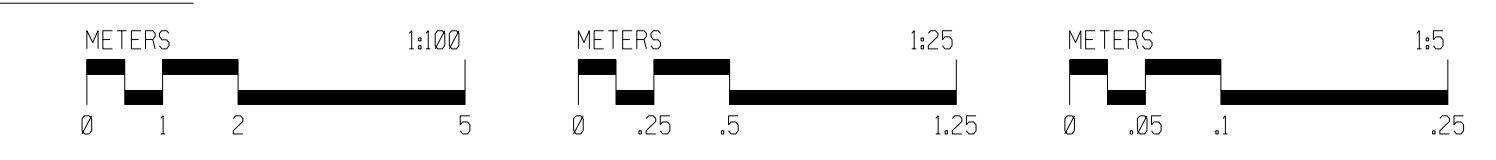
07 UPPER FLOOR LEVEL DETAIL
1 : 25



08 LOWER FLOOR LEVEL DETAIL
1 : 25



11 GRADUATED FRIT PATTERN
NOT TO SCALE



PROPOSED

P1 22/08/16 Non Material Amendment : S96a Application
T2 10/06/15 Issued for Tender
T2 05/06/15 Issued for Tender

CLIENT
VIACOM International Media Networks
17-23 Hawley Crescent, London, N11 8TT
t. +44 (0)203 580 2000

CONTRACTOR
FAITHDEAN PLC
The Oaks, Revenge Road, Lordswood, Chatham, Kent ME5 8LF
t. +44 (0)1634 888 268

ARCHITECT
5plus architects
3rd Floor
25 Chart Street
London N1 6FA
t. +44 (0)207 253 7644
www.5plusarchitects.com

PROJECT: **VIMN Courtyard Infill Camden**
TITLE: **Architecture Details External Facade Details**
SCALE: **Various @ A1** ORIGIN DATE: **05/06/15** DRAWN: **OR** CHECKED: **AT**
STATUS: **Non Material Amendment : S96a Application**
PROJECT DRAWING NO: **05445 A9-DPA-016** REV: **P1**
Architecture | Masterplanning | Interiors | Graphics | Branding