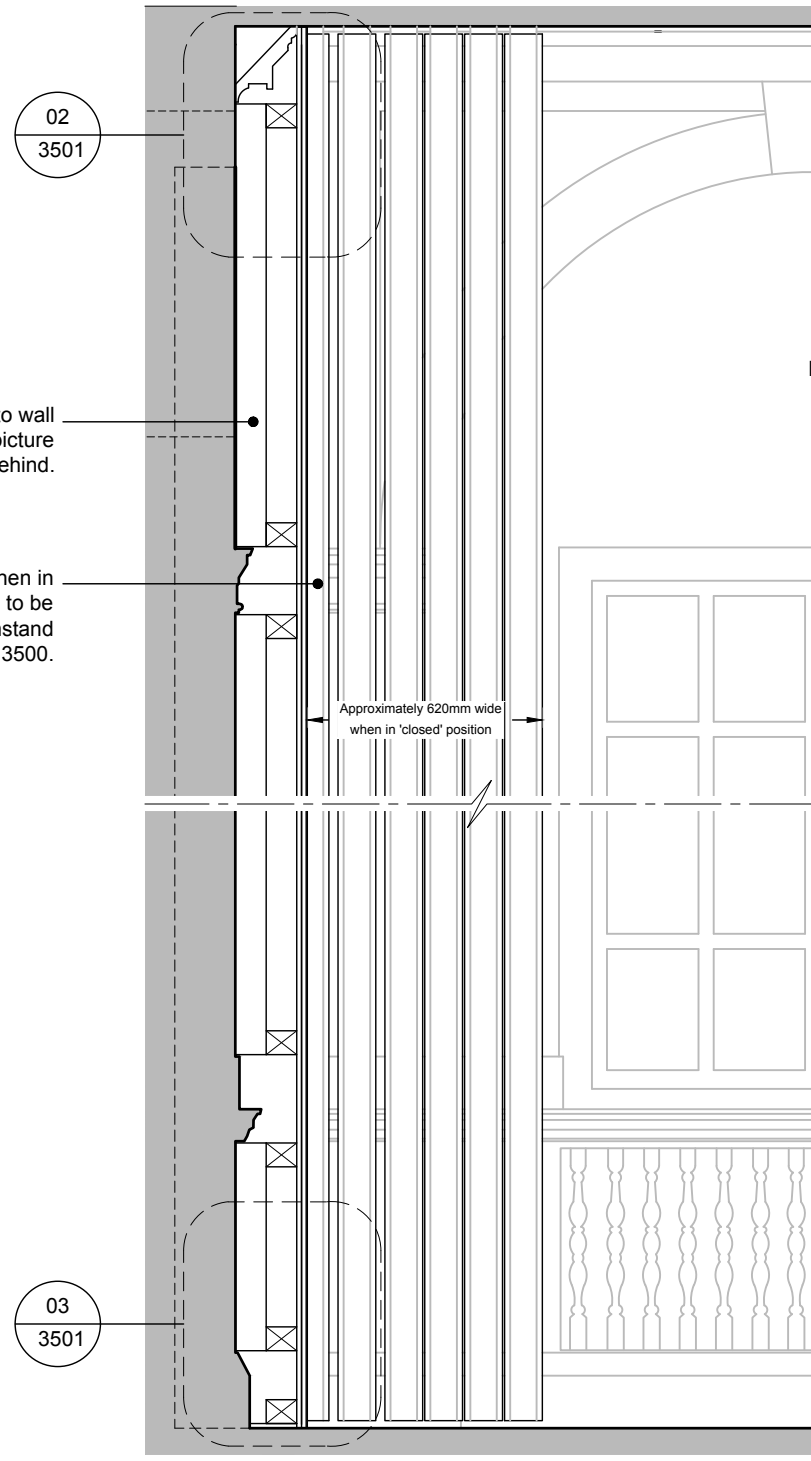
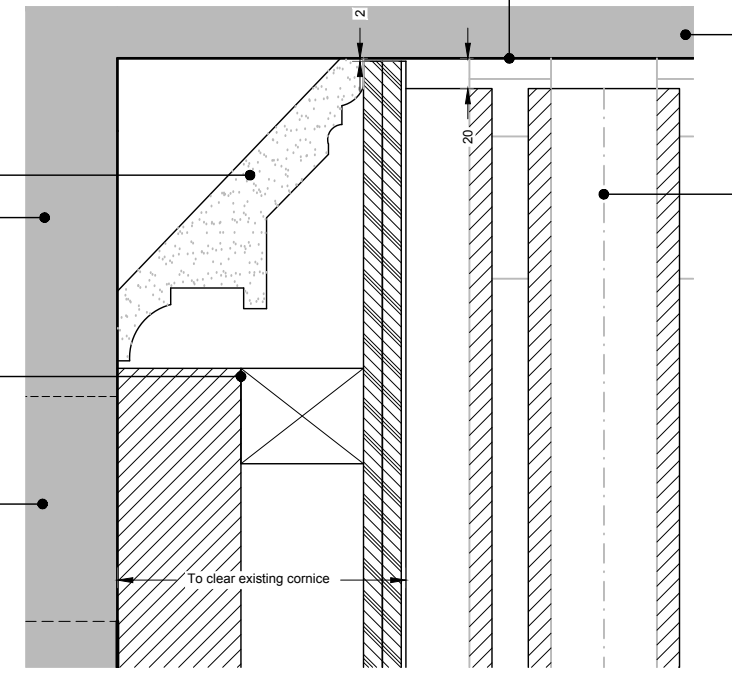




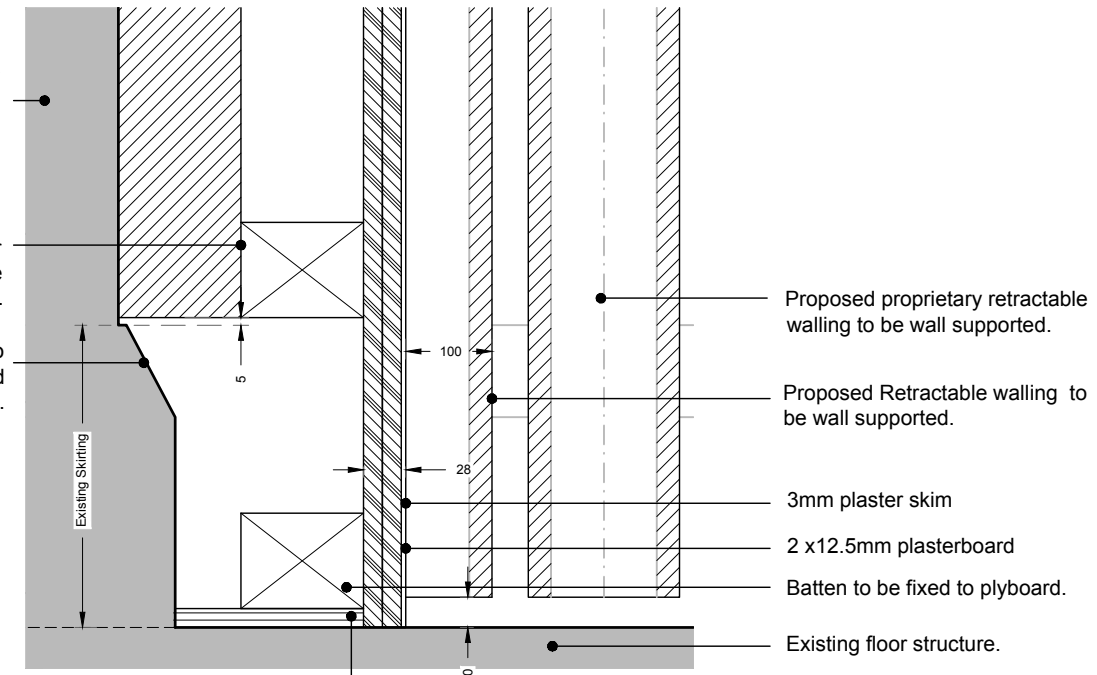
Key:  
Existing fabric



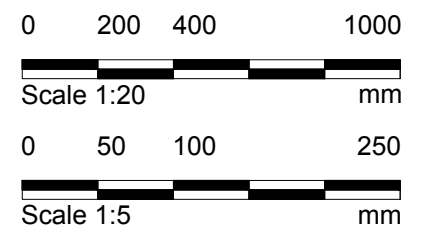
01 RETRACTABLE WALLING - SECTION  
3502 1:20 @ A3



02 Head Connection Detail  
3501 1:5 @ A3



03 Foot Connection Detail  
3502 1:5 @ A3  
12.5mm plyboard. Existing carpet to be removed beneath new boxing-out.



ISSUED FOR STATUTORY COMMENT

**Notes:**  
1 Any dwg format drawing is to be read only in conjunction with and at the scale of the accompanying pdf.  
2 Status 'C' drawing (Construction): All dimensions are to be checked on site by the contractor, scaling is for Planning purposes only. Unless otherwise indicated, all dimensions are in millimeters. All information on this drawing is to be read in conjunction with the relevant Donald Insall Associates specification and trade contractors' drawings and information by specialists.  
3 In the event of any query, please contact us immediately.  
4 This drawing contains survey information by others and is to be used solely for the purposes for which it was issued.

Rev	Date	Dwn	Auth	Revision	Rev	Date	Dwn	Auth	Revision
-	22.08.16	BXR	AEF	INITIAL ISSUE					

**Drawing Status**  
F Feasibility  
S Sketch Design  
D Design  
P Planning  
B Building Control  
W Working Drawing  
M Measurement  
T Tender  
C Construction  
R Record

BLOOMSBURY HOTEL  
WC1B 3NN  
  
Queen Mary Room  
Retractable Wall  
Section Detail

**Donald Insall Associates**  
Chartered Architects and Historic Building Consultants  
12 Devonshire Street, London W1G 7AB  
T: (+44)20 7245 9888 www.insall-architects.co.uk

Project	BLOOM.01	No	3502
Scale		Status	Rev
(A3)	1: 5 20	P	-