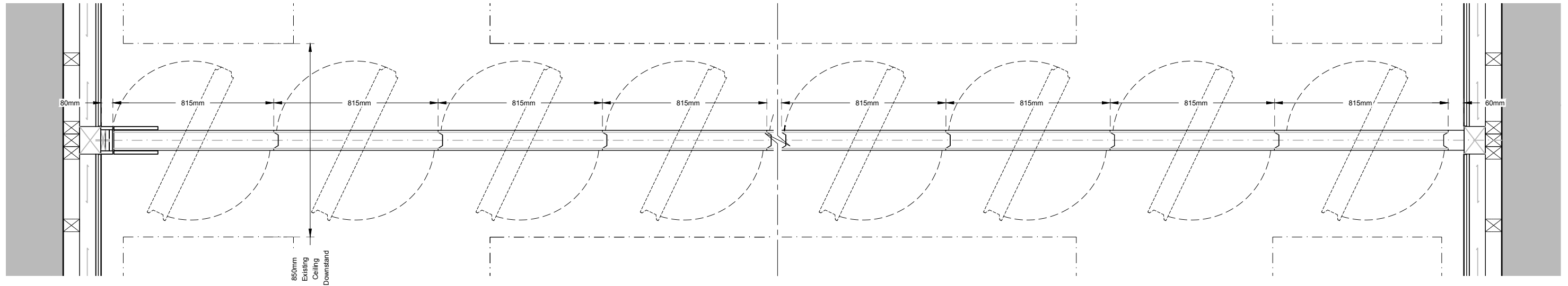
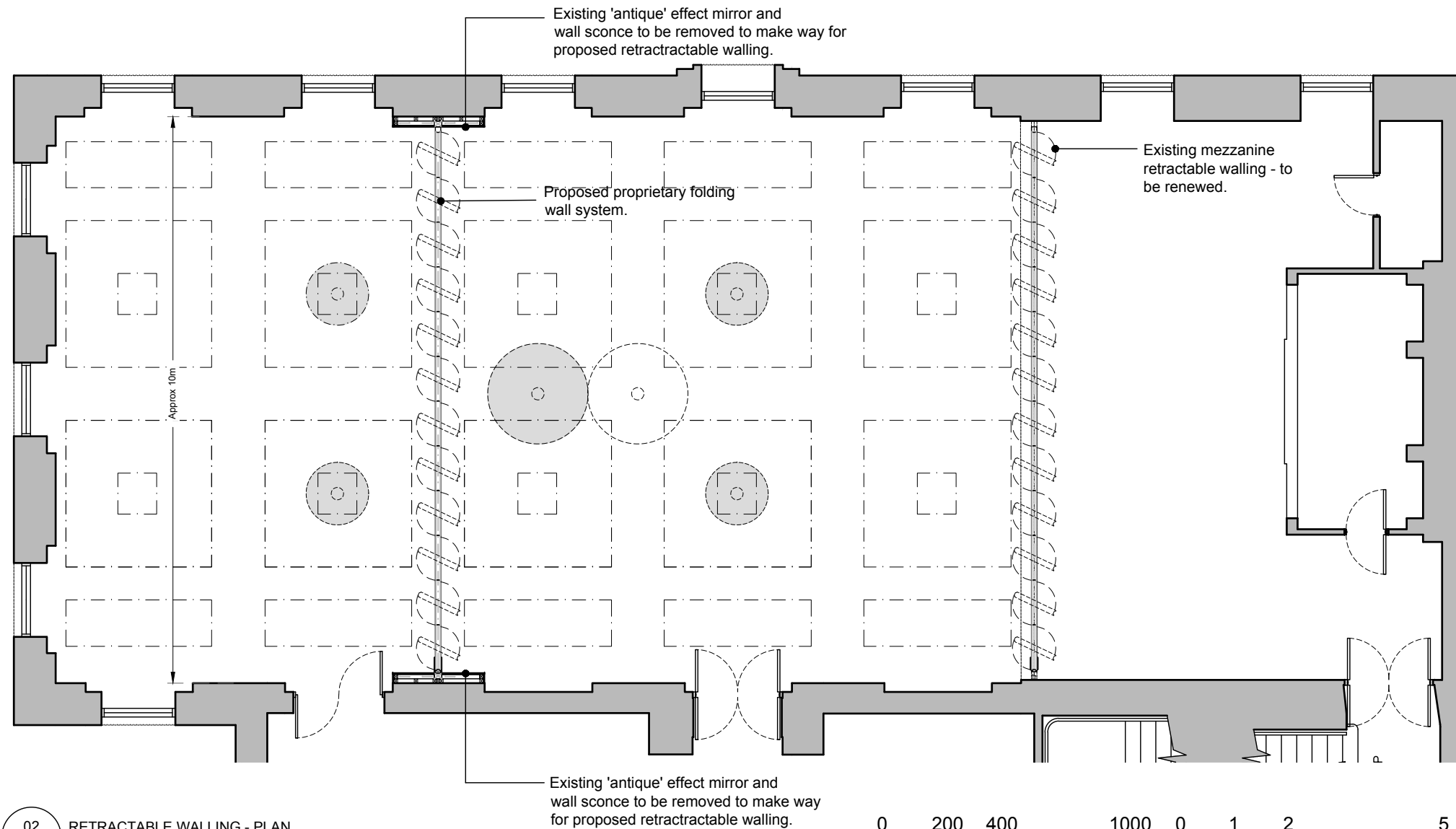


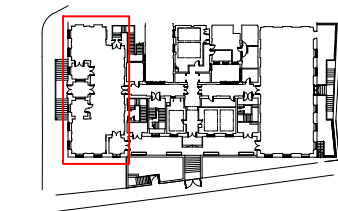
All drawings based on survey by others



01 RETRACTABLE WALLING - PART PLAN  
3500 1:20 @ A3

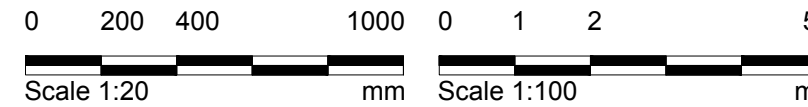


- Key:
- Existing fabric
  - Existing chandelier positions
  - Proposed chandelier position - Proposed retractable walling do not obstruct existing chandelier arrangement, but the central chandelier may require to be reordered to accommodate the retractable walling when in the closed position.



03 KEY PLAN  
3500 NTS

02 RETRACTABLE WALLING - PLAN  
3500 1:100 @ A3



ISSUED FOR STATUTORY COMMENT

**Notes:**

- Any dwg format drawing is to be read only in conjunction with and at the scale of the accompanying pdf.
- Status 'C' drawing (Construction): All dimensions are to be checked on site by the contractor, scaling is for Planning purposes only. Unless otherwise indicated, all dimensions are in millimeters. All information on this drawing is to be read in conjunction with the relevant Donald Insall Associates specification and trade contractors' drawings and information by specialists.
- In the event of any query, please contact us immediately.
- This drawing contains survey information by others and is to be used solely for the purposes for which it was issued.

© 2016 DONALD INSALL ASSOCIATES LTD

Rev	Date	Dwn	Auth	Revision
-	22.08.16	BXR	AEF	INITIAL ISSUE

Rev	Date	Dwn	Auth	Revision
-	22.08.16	BXR	AEF	INITIAL ISSUE

**Drawing Status**

- F Feasibility
- S Sketch Design
- D Design
- P Planning
- B Building Control
- W Working Drawing
- M Measurement
- T Tender
- C Construction
- R Record

BLOOMSBURY HOTEL  
WC1B 3NN

Queen Mary Room  
Retractable Wall  
Plan

**Donald Insall Associates**  
Chartered Architects and Historic Building Consultants

12 Devonshire Street, London W1G 7AB  
T: (+44)20 7245 9888 www.insall-architects.co.uk

Project	BLOOM.01	No	3500
Scale	(A3) 1: 20 100	Status	P
		Rev	-