

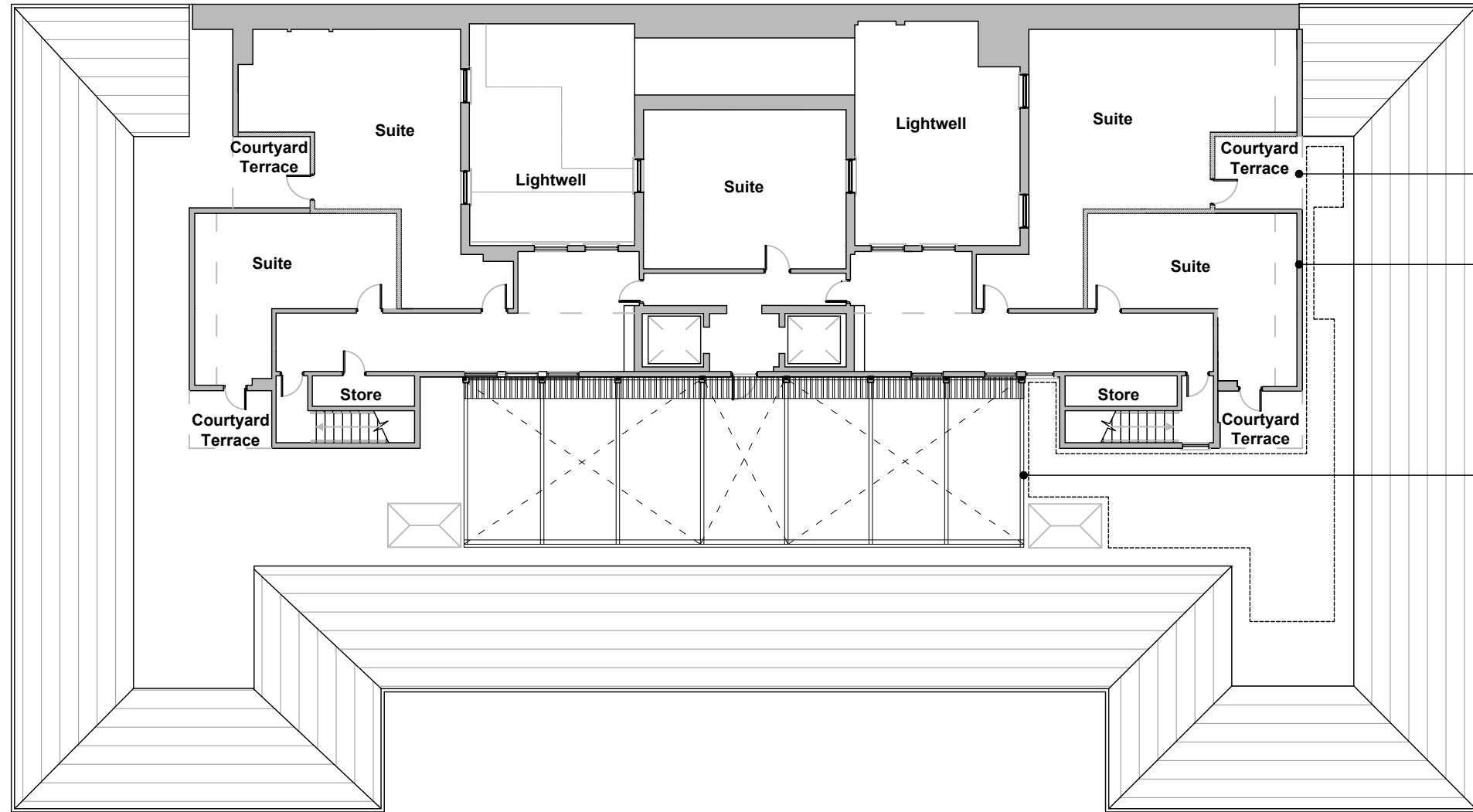


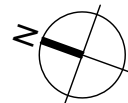
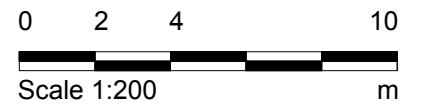
Key:
 Existing fabric
 Proposed wall



New balconies within massing of existing 8m floor extension

New arrangement of internal partitions to create larger suites with en-suites and external courtyards

New metal and glazed terrace extension with retractable fabric roof. Metal structure to be dark grey to blend with lead roof. For details refer to DIA dwg 2800.



ISSUED FOR STATUTORY COMMENT

01 EIGHTH FLOOR PLAN - AS PROPOSED
 2018 1:200 @ A3

Notes:
 1 Any dwg format drawing is to be read only in conjunction with and at the scale of the accompanying pdf.
 2 Status 'C' drawing (Construction):
 All dimensions are to be checked on site by the contractor, scaling is for Planning purposes only.
 Unless otherwise indicated, all dimensions are in millimeters.
 All information on this drawing is to be read in conjunction with the relevant Donald Insall Associates specification and trade contractors' drawings and information by specialists.
 3 In the event of any query, please contact us immediately.
 4 This drawing contains survey information by others and is to be used solely for the purposes for which it was issued.

Rev	Date	Dwn	Auth	Revision
-	22.08.16	BXR	AEF	INITIAL ISSUE

Drawing Status
 F Feasibility
 S Sketch Design
 D Design
 P Planning
 B Building Control
 W Working Drawing
 M Measurement
 T Tender
 C Construction
 R Record

BLOOMSBURY HOTEL
 WC1B 3NN

 EIGHTH FLOOR PLAN
 AS PROPOSED

Donald Insall Associates
 Chartered Architects and Historic Building Consultants
 12 Devonshire Street, London W1G 7AB
 T: (+44)20 7245 9888 www.insall-architects.co.uk

Project	BLOOM.01	No	2018
Scale		Status	Rev
(A3)	1: 200	P	-