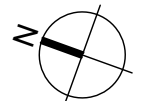
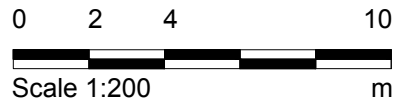
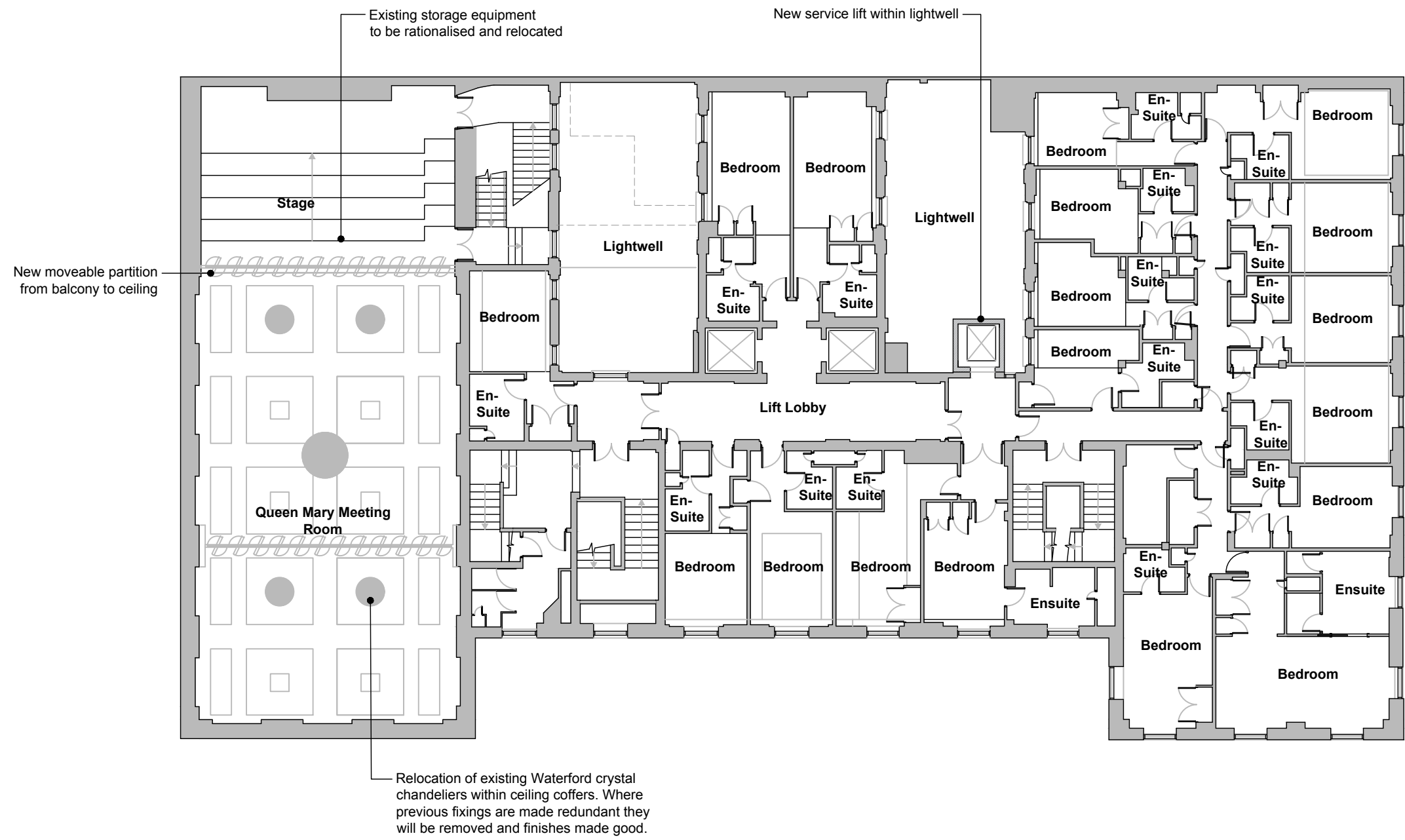


Key:  
 Existing fabric  
 Proposed wall



ISSUED FOR STATUTORY COMMENT

01 THIRD FLOOR PLAN - AS PROPOSED  
 2015 1:200 @ A3

**Notes:**  
 1 Any dwg format drawing is to be read only in conjunction with and at the scale of the accompanying pdf.  
 2 Status 'C' drawing (Construction):  
 All dimensions are to be checked on site by the contractor, scaling is for Planning purposes only.  
 Unless otherwise indicated, all dimensions are in millimeters.  
 All information on this drawing is to be read in conjunction with the relevant Donald Insall Associates specification and trade contractors' drawings and information by specialists.  
 3 In the event of any query, please contact us immediately.  
 4 This drawing contains survey information by others and is to be used solely for the purposes for which it was issued.

| Rev | Date     | Dwn | Auth | Revision      |
|-----|----------|-----|------|---------------|
| -   | 22.08.16 | BXR | AEF  | INITIAL ISSUE |

**Drawing Status**  
 F Feasibility  
 S Sketch Design  
 D Design  
 P Planning  
 B Building Control  
 W Working Drawing  
 M Measurement  
 T Tender  
 C Construction  
 R Record

BLOOMSBURY HOTEL  
 WC1B 3NN  
 THIRD FLOOR PLAN  
 AS PROPOSED

**Donald Insall Associates**  
 Chartered Architects and Historic Building Consultants  
 12 Devonshire Street, London W1G 7AB  
 T: (+44)20 7245 9888 www.insall-architects.co.uk

|         |          |        |      |
|---------|----------|--------|------|
| Project | BLOOM.01 | No     | 2015 |
| Scale   | 1:200    | Status | P    |
|         |          | Rev    | -    |