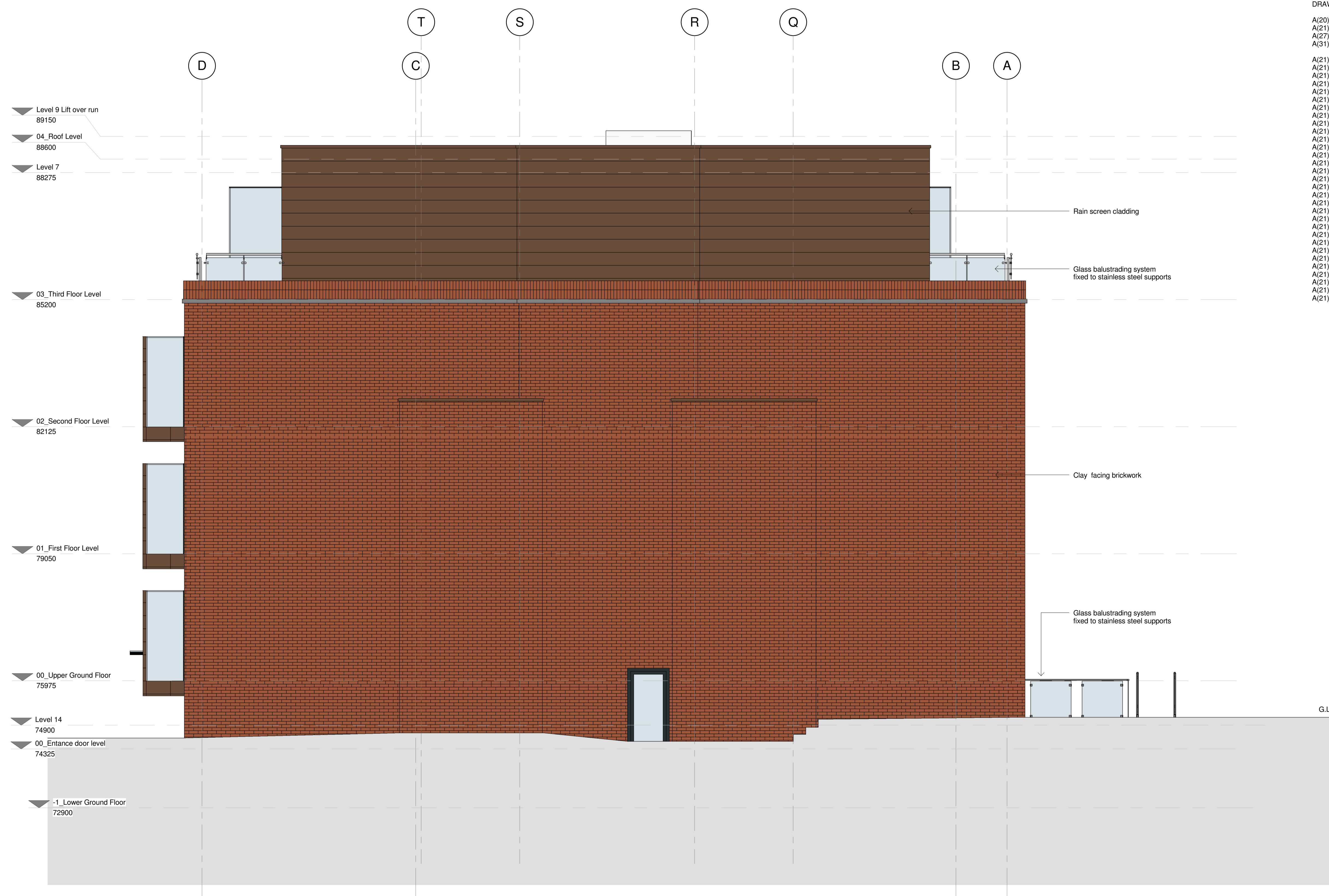


© WCEC ARCHITECTS - DISCLAIMER
 This drawing is copyright and shall not be reproduced or used for any other purpose without the written permission of the architects.
 It is the contractors responsibility to ensure full compliance with the Building Regulations.
 It is the contractors responsibility to check and verify all dimensions on site.
 Do not scale from this drawing, use figured dimensions only.
 Any discrepancies to be reported immediately.
 IF IN DOUBT ASK.
 Materials not in conformity with relevant British or European Standards/Codes of practice or materials known to be deleterious to health & safety must not be used or specified on this project.
 Materials known to contain asbestos contaminated materials (ACM's) in the manufacture or installation process have not been specified and must not be used on this project.

NOTES:
 DRAWINGS TO BE READ IN CONJUNCTION WITH:

- A(20) Series - Setting Out Plans
- A(21) Series - Building Shell (See specific Below)
- A(27) Series - Roof Plans
- A(31) Series - Window Types
- A(21) 101 - Rainscreen Cladding Setting Out
- A(21) 102 - Rainscreen Cladding Setting Out - Sheet 2
- A(21) 103 - Rainscreen Cladding Setting Out - Sheet 3
- A(21) 104 - Rainscreen Cladding Setting Out - Sheet 4
- A(21) 105 - Rainscreen Cladding Setting Out - Sheet 5
- A(21) 106 - Rainscreen Cladding Setting Out - Sheet 6
- A(21) 1001 - Party Wall to External Wall Plan
- A(21) 1002 - Party Floor to External Wall Section - CLT Floor
- A(21) 1004 - External Wall Section - Upper Ground Floor
- A(21) 1005 - Party Wall to External Wall Plan - Rainscreen Cladding
- A(21) 1006 - External Wall Section - Rainscreen Cladding
- A(21) 1008 - Floor to External Wall Section - Lower Ground Floor
- A(21) 2001 - Window Jamb Detail CLT faced with masonry
- A(21) 2002 - Window Head Detail CLT faced with masonry
- A(21) 2003 - Window Cill Detail CLT faced with masonry
- A(21) 2004 - Window Jamb Detail Concrete faced with masonry
- A(21) 2005 - Window Head Detail Concrete faced with masonry
- A(21) 2006 - Window Cill Detail Concrete faced with masonry
- A(21) 2007 - Window Head Detail CLT faced with render
- A(21) 2008 - Window Cill Detail CLT faced with render
- A(21) 2010 - Jamb Detail Lower Ground Floor Sliding Doors
- A(21) 2011 - Head Detail Lower Ground Floor Sliding Doors
- A(21) 2012 - Threshold Detail Lower Ground Floor Sliding Doors
- A(21) 2013 - Jamb Detail Windows within Rainscreen Cladding
- A(21) 2014 - Jamb Detail Windows within Rainscreen Cladding
- A(21) 2015 - Head Detail Windows within Rainscreen Cladding
- A(21) 2016 - Cill Detail Windows within Rainscreen Cladding
- A(21) 2021 - Detail Section 3rd Floor Roof Parapet
- A(21) 2022 - Detail Section 3rd Floor Parapet
- A(21) 2031 - Oriel Windows to Front Elevation
- A(21) 2032 - Oriel Windows to Side Elevation



East Elevation
 1 : 50

No	Date	Description	By	Ckd
C	22.08.16	Model and drawing updated.	AM	DRJ
B	24.01.16	ground levels adjusted and line of below ground brick plinth added	Tam	DJ
A	04/12/15	Entrance arrangement including canopy revised (SOUTH ELEVATION). Brick slip cladding amended to clay facing brickwork	MO	DJ



PROJECT
 264-270 FINCHLEY ROAD, NW3

TITLE
 GA Elevation - East

DRAWING STATUS INFORMATION			
DRAWN	Tam	CHECKED	MO
SCALE	1 : 50 @ A1		
DATE	27/11/15		

wcec architects
 4th Floor, South Building, Staple Inn Buildings,
 High Holborn, London, WC1V 7PZ
 Carnwood Court, Carnwood Road,
 Sheepbridge, Chesterfield, S41 9QB
 t: 020 3388 0019, e: email@wcec.co.uk, www.wcec.co.uk

JOB NO.	DRAWING NO.	REV
15-470	A(00)-24	C