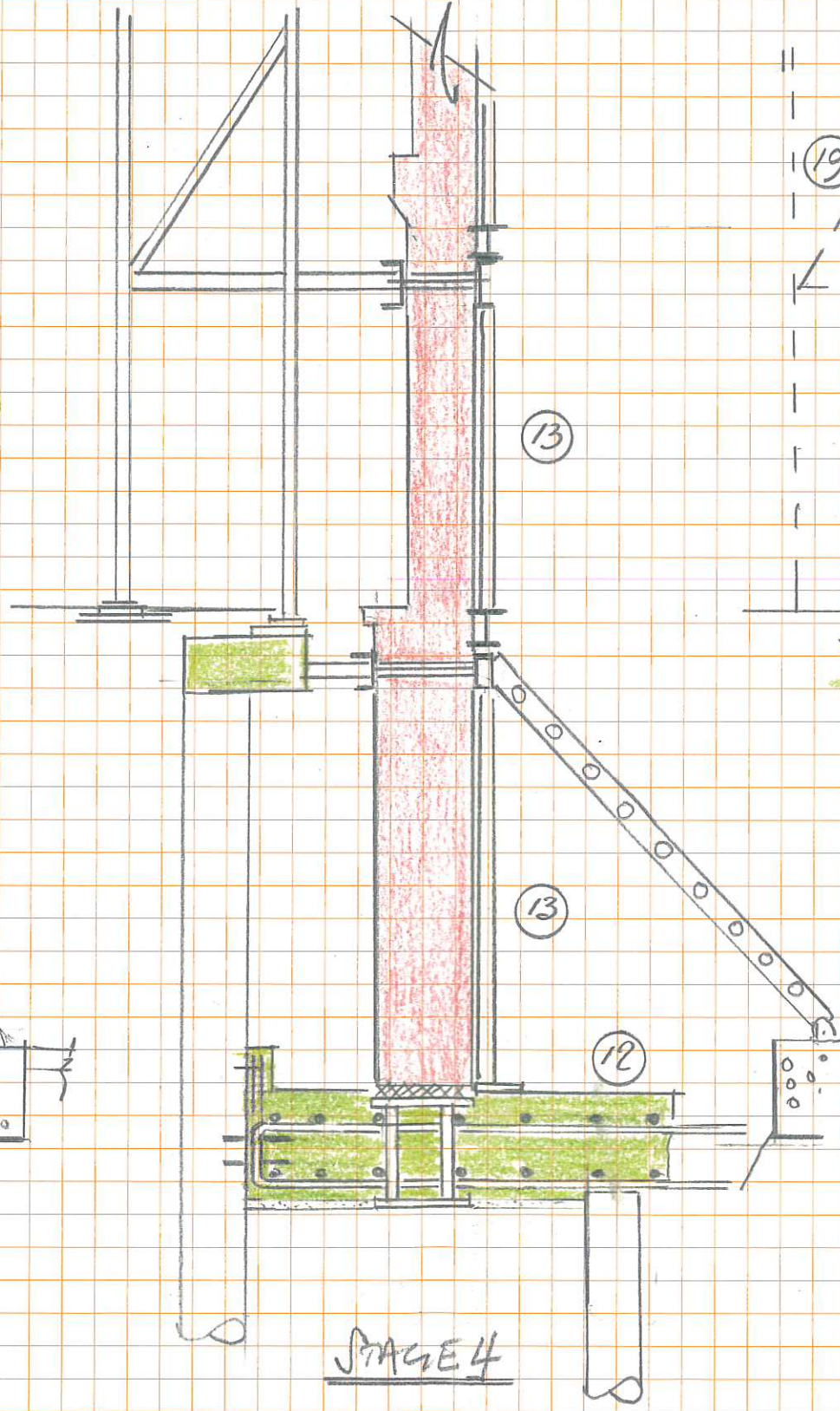
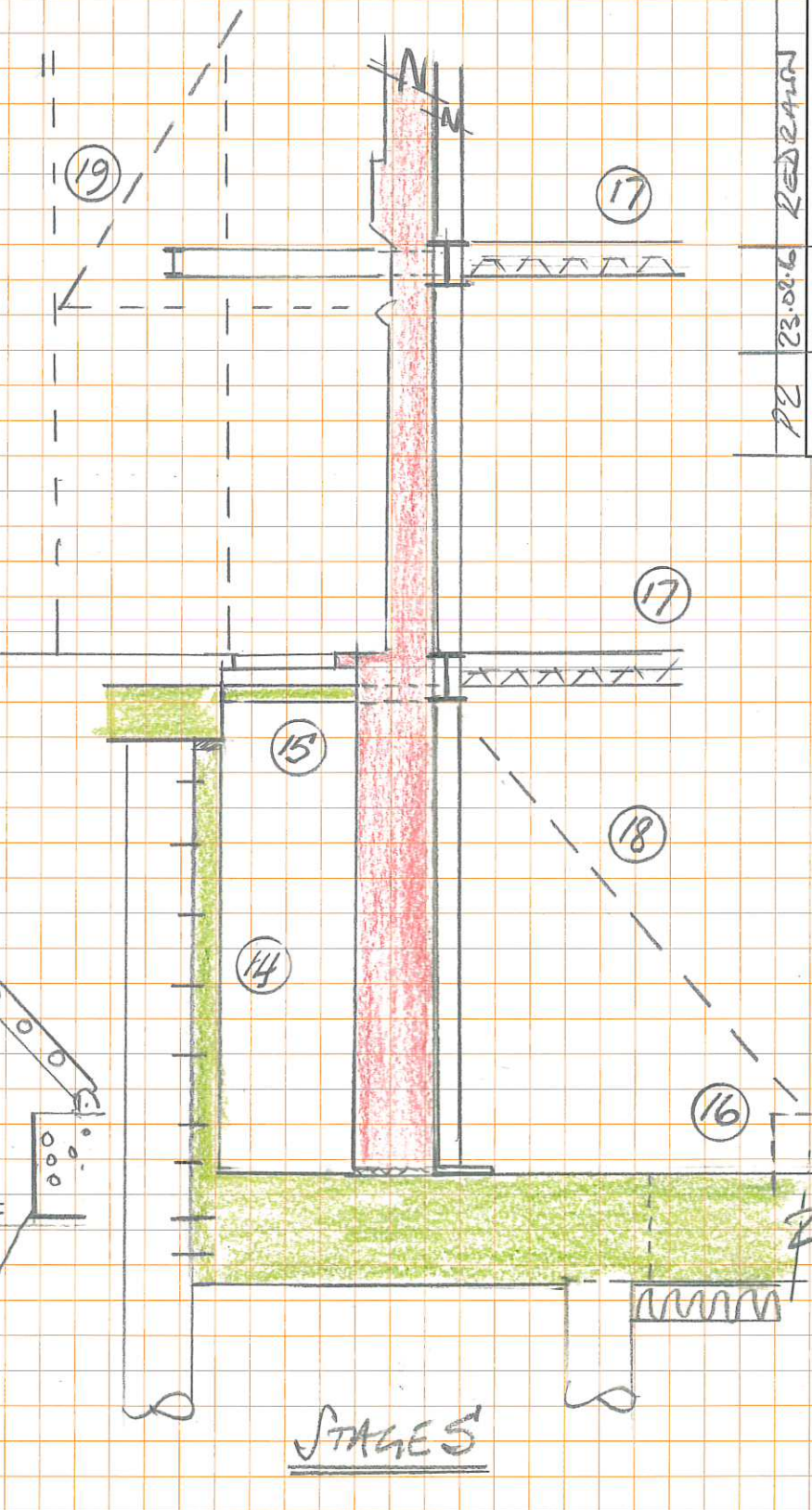


STAGE 3



STAGE 4



STAGES

11 - EXCAVATE LIGHT WELLS IN FILL AND AREA COMMENCE EXCAVATION FOR EACH "PYNFORD BEAM" JOCK INDIVIDUALLY TO AGREED SEQUENCE OF 2 NO 5m APART AT ANY TIME UNTIL ALL JOCKS ARE IN PLACE

12 - PLACE REINFORCEMENT, INSERT DOWELS INTO PILED WALL AND CAST CONCRETE

13 - COMMENCE ERECTION OF STEEL WORK TYPING TO FRONT WALL

14 - CAST RC LINER TO PILED WALL  
 15 - INSTALL TIES BETWEEN CAPPING BEAM & FRONT WALL  
 16 - CAST GROUND SLAB ON ANTIHEAVE  
 17 - INSTALL STEELWORK & FLOORS  
 18 - REMOVE DIAGONAL WAREHOUSE SLAB  
 19 - REMOVE EXTERNAL FRAMING

rev.	date	description
PZ	23.02.16	REDRAWN

drawing status	PRELIMINARY
scale	1:50
date	FEB 16
drawn	GBS
checked	NTN
job no.	140352
drg no.	NK101
rev	PZ

project  
 VONDHEM (AMBASSADORS) THEATRE  
 title  
 SUGGESTED CONSTRUCTION SEQUENCE  
 TO FRONT WALL - WEST STREET

**conisbee**

1-5 Offord St London N1 1DH  
 Telephone 020 7700 6666  
 design@conisbee.co.uk  
 www.conisbee.co.uk  
 Consulting Structural Engineers  
 Consulting Civil Engineers