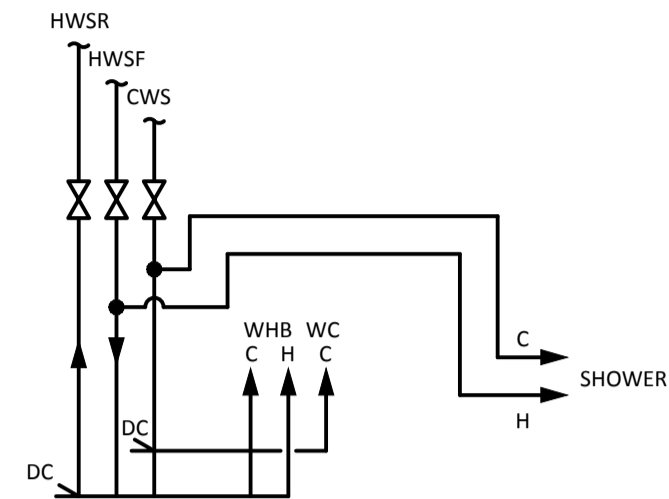
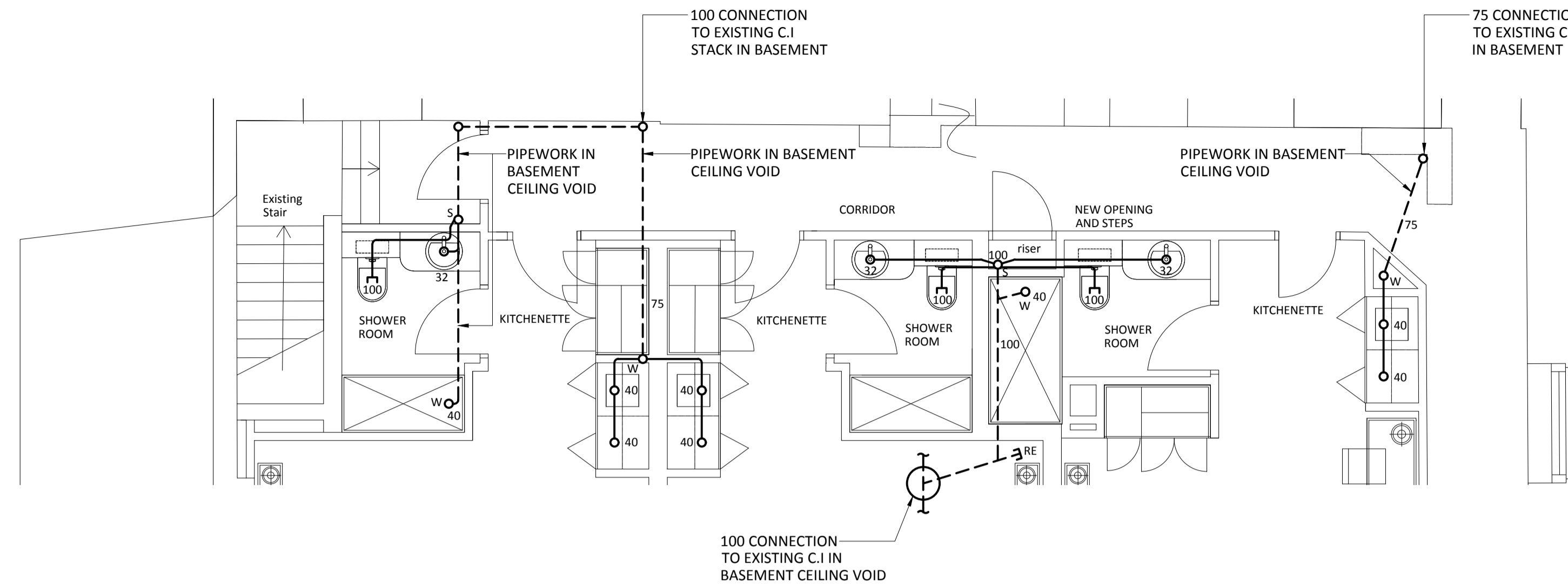


NOTES:

1. ALL CONNECTIONS TO SANITARYWARE SHALL HAVE FULL BORE BALLOFIX VALVE SHOWER SUPPLY VALVES TO BE MOUNTED IN SERVICES RISERS.
2. ALL WATER SERVICE PIPEWORK TO BE INSULATION THROUGHOUT.
3. ALL SOIL AND WASTE RISERS FROM BASEMENT TO BE FITTED WITH FIRE COLLAR AND AIR ADMITTANCE VALVE.
4. SEE SPECIFICATION FOR PIPEWORK DETAILS AND TRAPS.



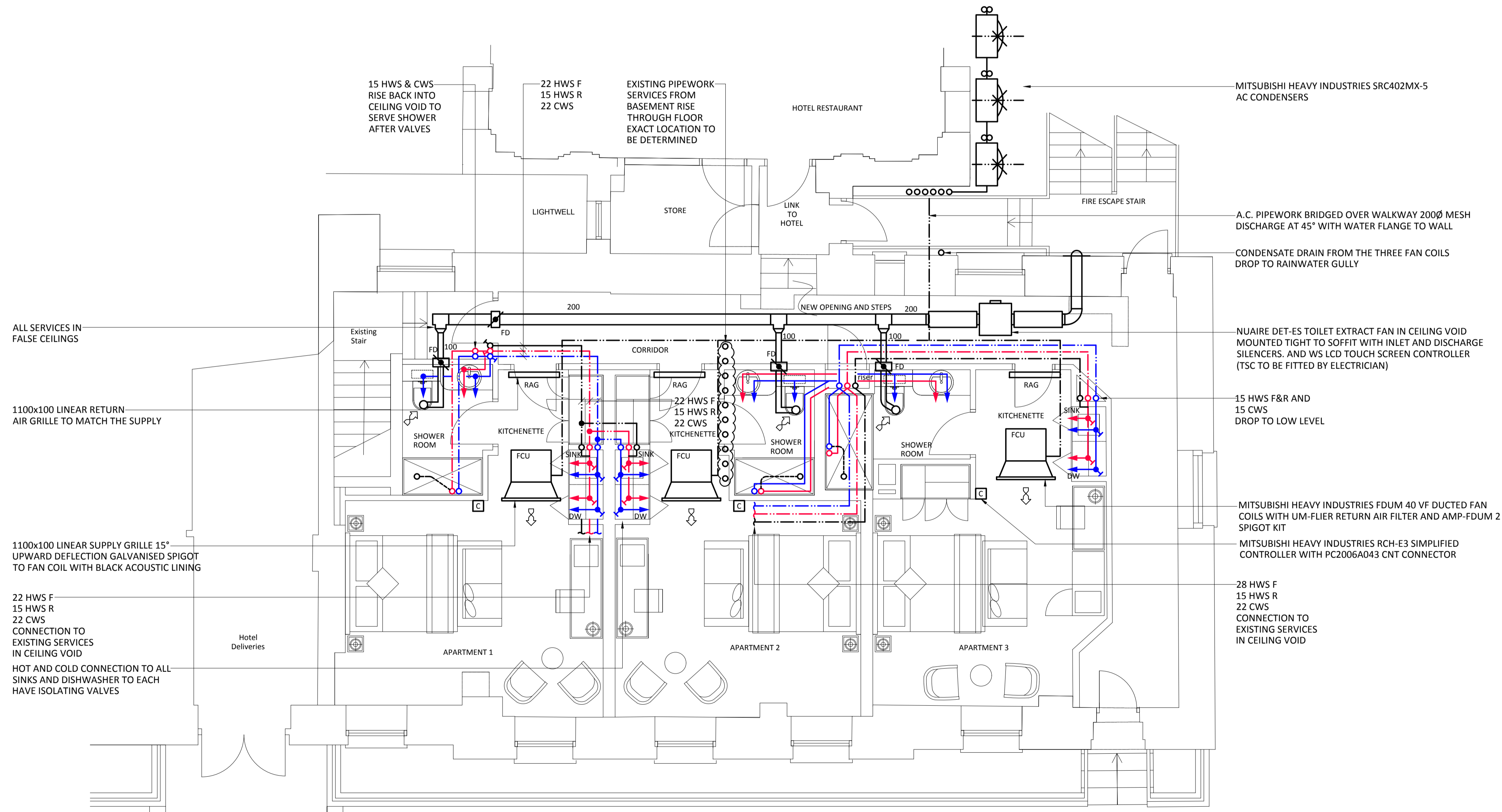
TYPICAL WATER SERVICE CONNECTION TO EN-SUITE (NTS)



SOILS & WASTE LAYOUT

NOTES:

1. ALL EXISTING LPHW HEATING PIPEWORK AND RADIATORS SHALL BE ISOLATED, DRAINED DOWN AND REMOVED.
2. ALL EXISTING HOT AND COLD WATER SERVICES AND DRAINAGE SHALL BE ISOLATED, DRAINED DOWN AND REMOVED.
3. ALL EXISTING VENTILATION SHALL BE REMOVED.



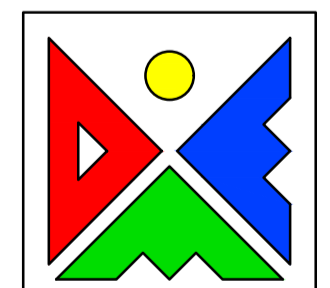
HEATING & VENTILATION LAYOUT

Rev.	Date	Description	Drawn	Checked
1	14.09.16	ISSUED FOR TENDER	SAM	PL

Client: **GLH**

Project: **THE KINGSLEY SERVICED APARTMENTS**

Drawing Title: **MECHANICAL SERVICES PROPOSALS**



Davies M&E Partnership Ltd.

Cestrian House, Lightfoot Street, Hoole, Chester, CH2 3AD.
Tel: 01244 315568
Email - cad@daviespartnership.co.uk
www.daviespartnership.co.uk

Building Services Mechanical / Electrical Consultants.



Date	Scale	Eng.
SEPT. 16	1:50 @ A1 1:100 @ A3	PJD EJV
Status	Drwg. No.	Rev.
T	16099/M1	-

DO NOT SCALE FROM THIS DRAWING
DRAWING TO BE READ IN
CONJUNCTION WITH SPECIFICATION