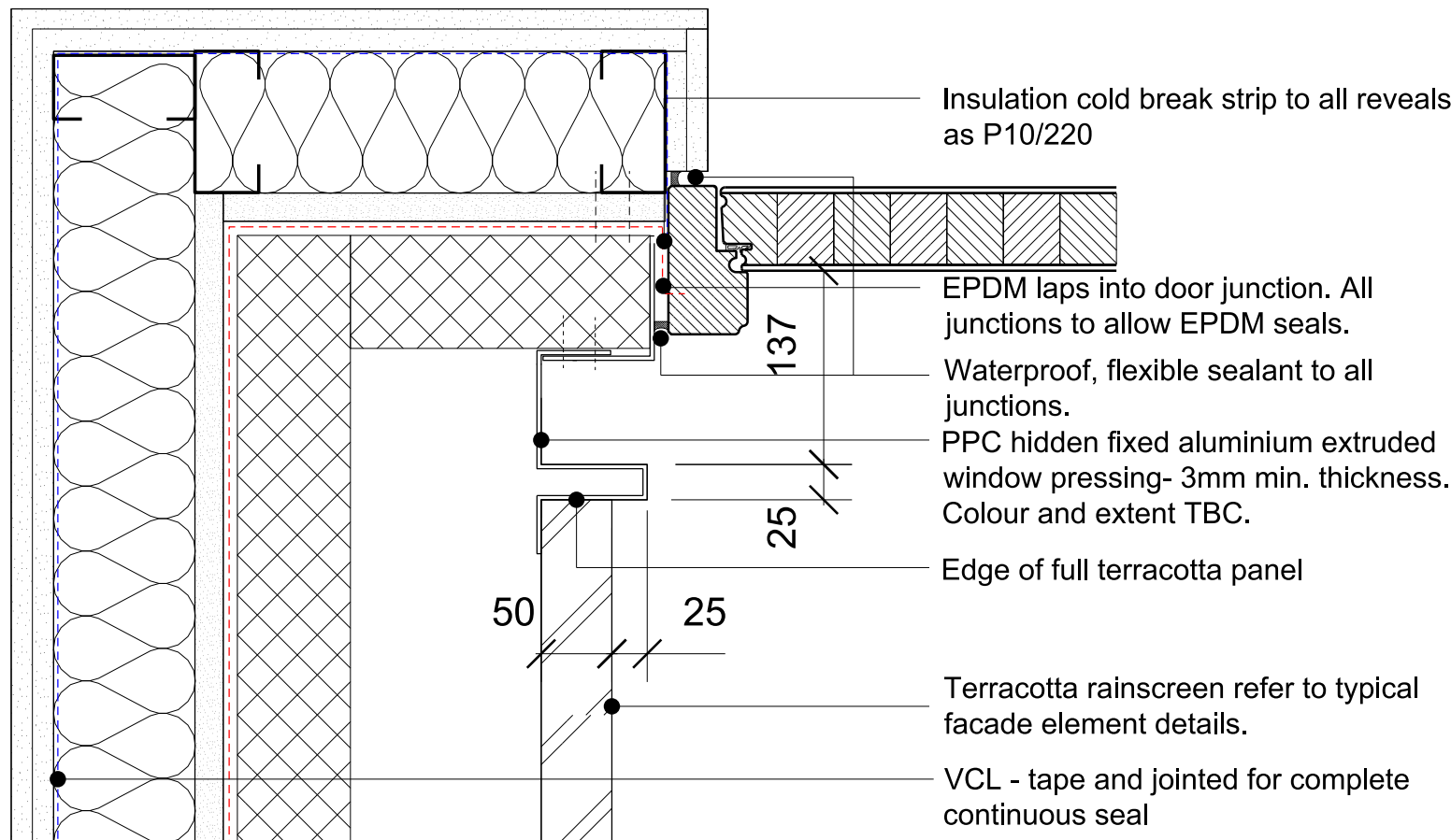
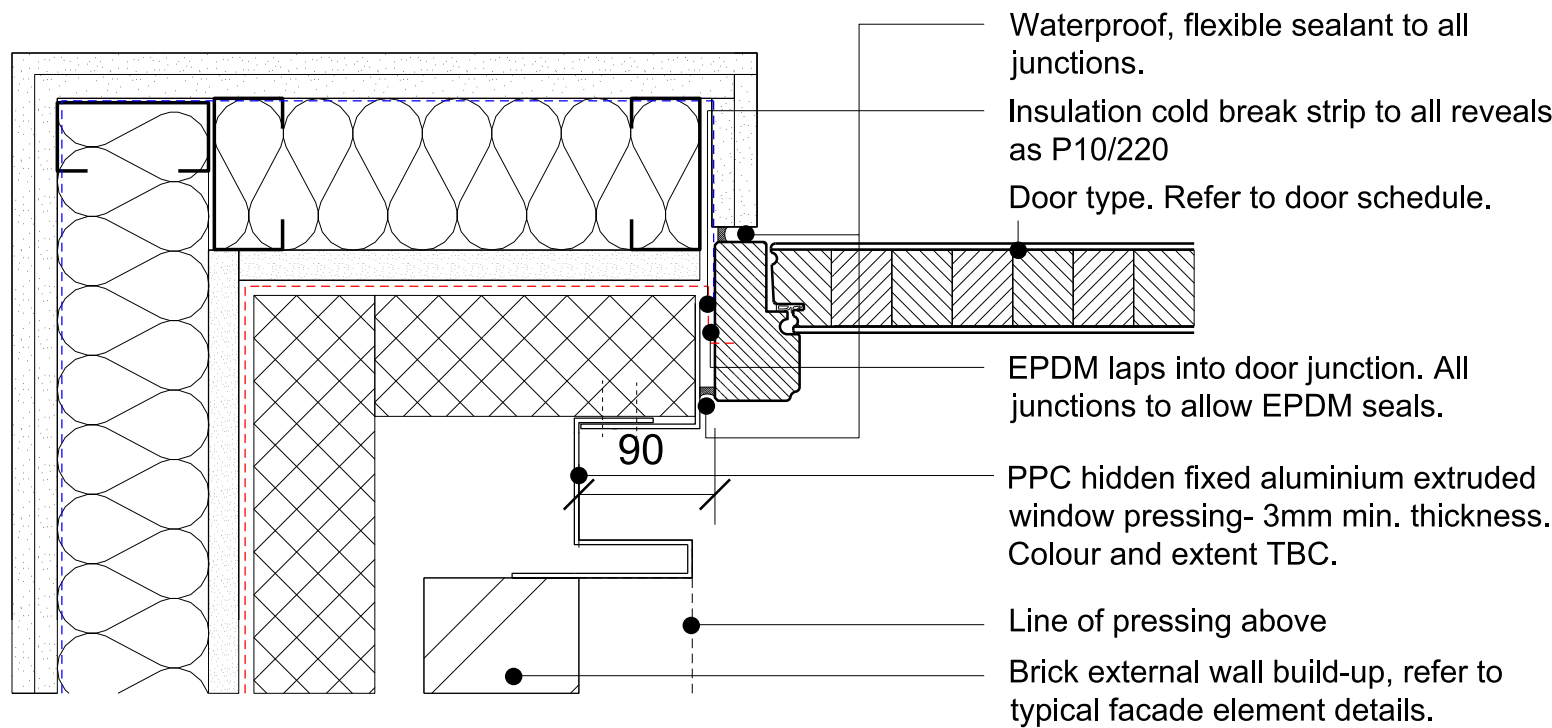


01 Head detail - Typical residential

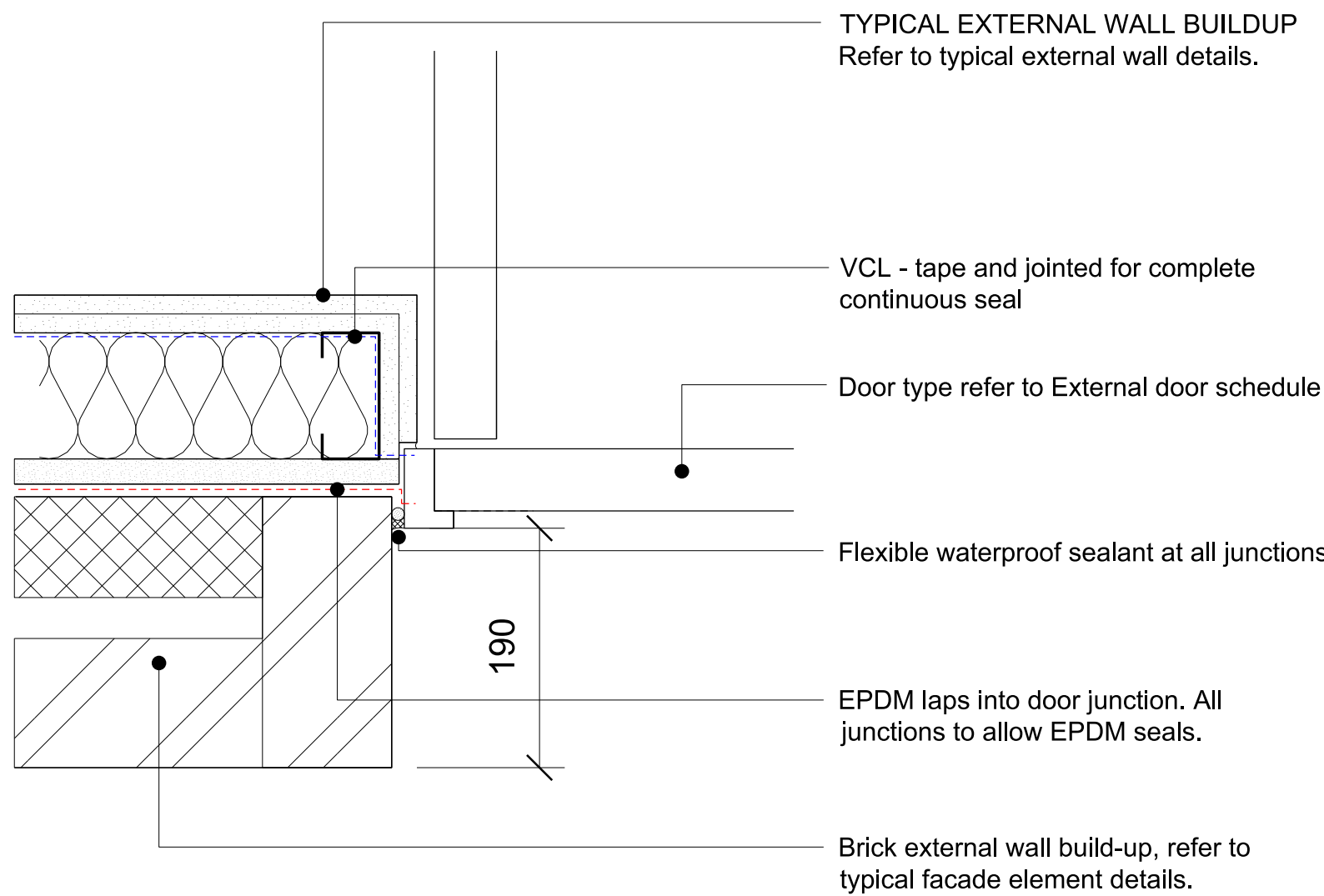


Terracotta rainscreen

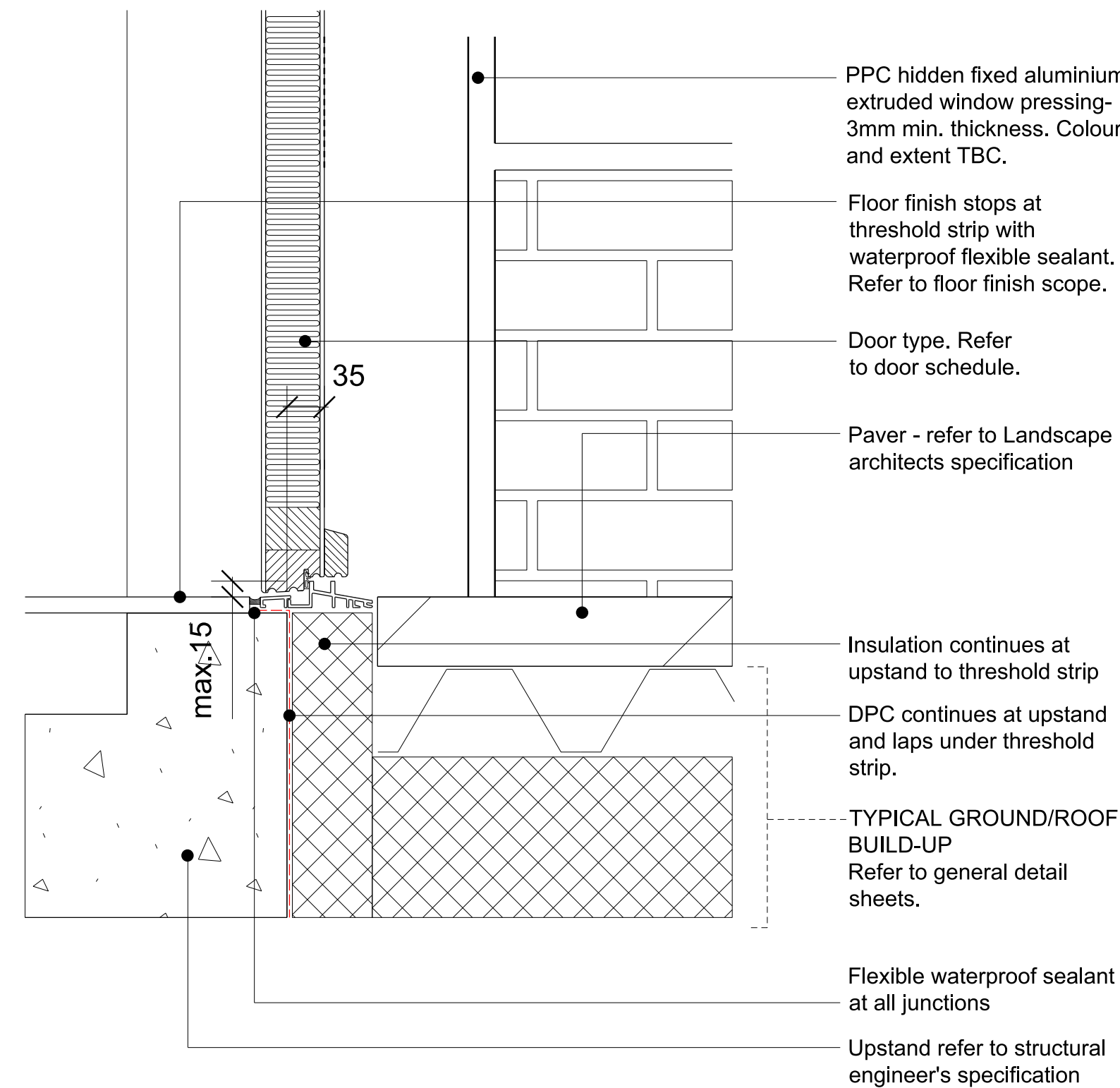


Brick Plinth

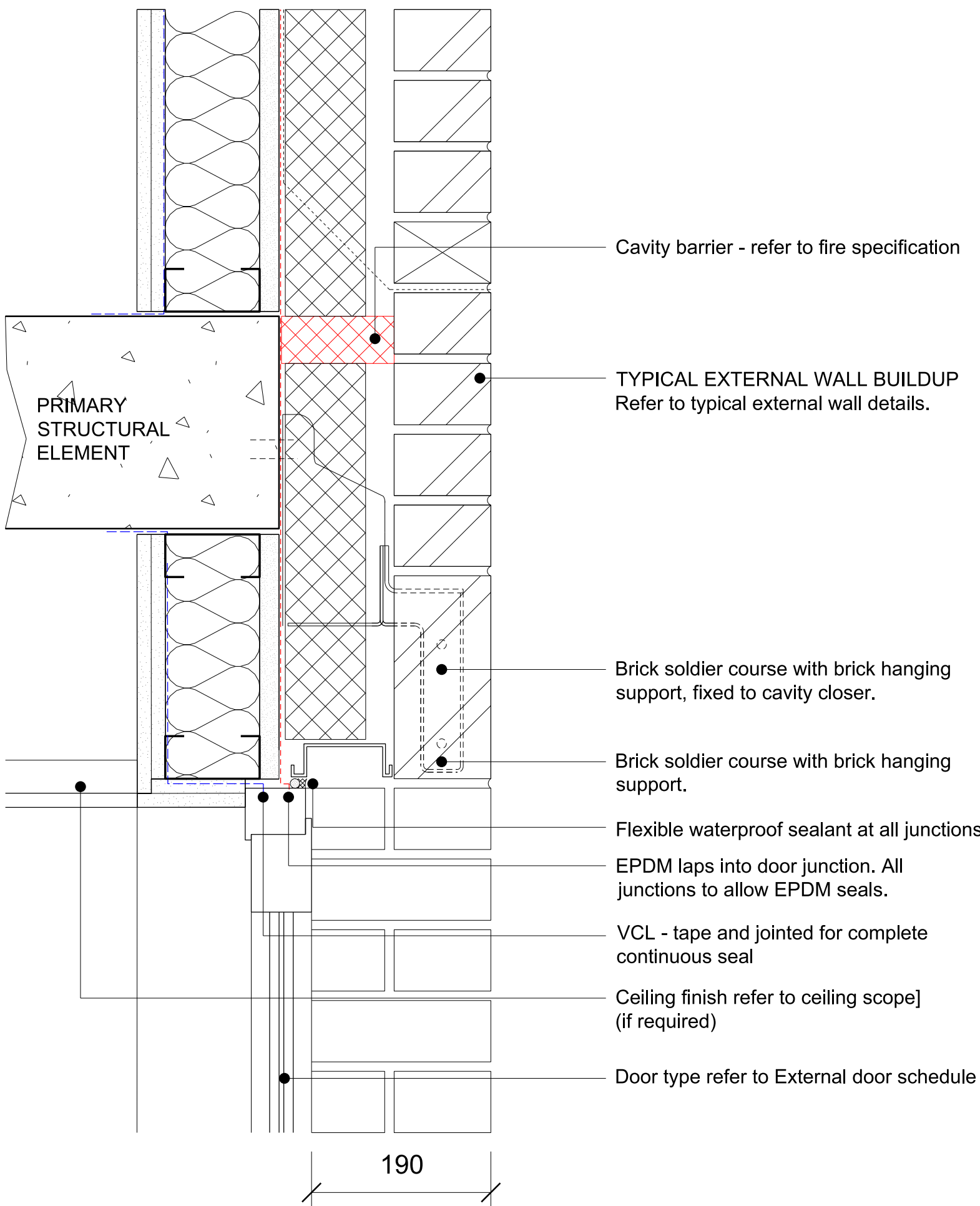
02 Jamb detail - Typical residential recess



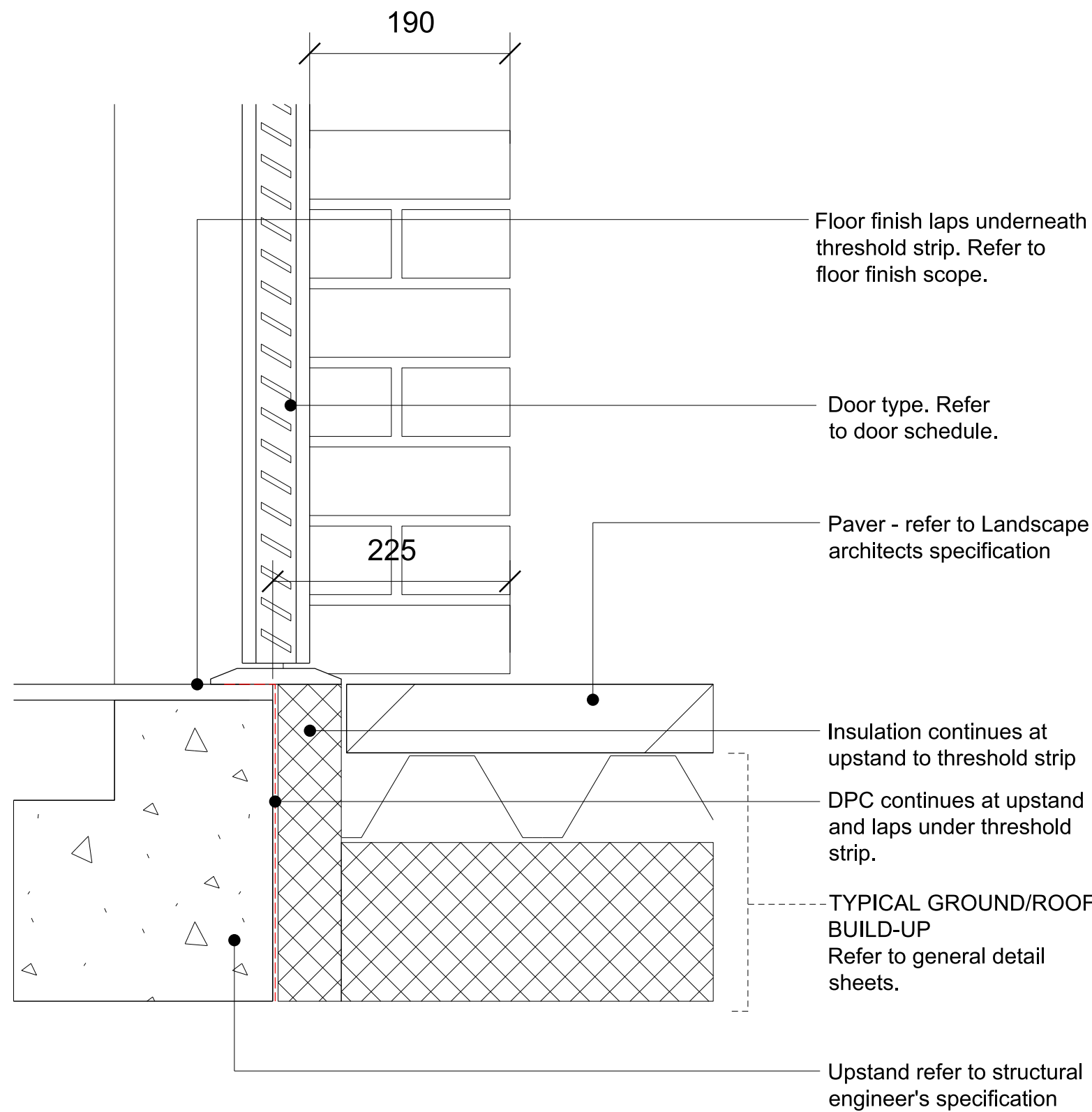
03 Jamb detail - Typical brick external wall



04 Base detail - Typical residential



05 Head detail - Typical brick external wall



06 Base detail - Typical level threshold

KEY

GENERAL NOTES

Refer to (68) series drawings for all fire ratings.

T02 10/06/16 STAGE F WINDOW AND SFS PACKAGE ISSUE
T01 26/06/15 TENDER

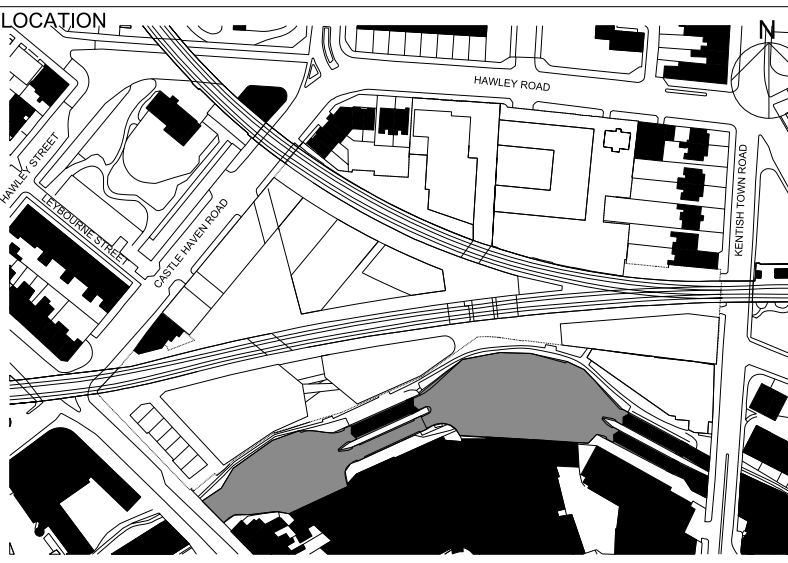
REV DATE DESCRIPTION

CONSULTANTS

CLIENT:	Stanley Slidings
CONTRACTOR:	MACE
STRUCTURAL ENGINEER:	Walsh Group
MECHANICAL ENGINEER:	Aecom
COST CONSULTANT:	Gardiner & Theobald
PROJECT MANAGER:	Gardiner & Theobald
ACOUSTIC CONSULTANT:	Hoare Lea
TRANSPORT CONSULTANT:	Arup
PLANNING CONSULTANT:	Gerald Eve
LANDSCAPE ARCHITECT:	Fabrik
CDM PRINCIPLE DESIGNER:	Gardiner & Theobald

NOTE

1. Do not scale from this drawing.
2. All dimensions to be checked on site by the contractor and such dimensions to be his responsibility.
Report all drawing errors, omissions and discrepancies to the architect.
3. This document may be issued in an uncontrolled CAD format to enable others to use it as background information to make alterations and/or additions. In that instance the file will be accompanied by a PDF version. It is for those making such alterations and additions to ensure that they make use of current background information.
4. AHMM Ltd accepts no liability for any such alterations or additions to the background information or arising out of changes to background information which occur prior to alterations of additions being made.



ALLFORD HALL MONAGHAN MORRIS
ARCHITECTS LTD
5-23 OLD STREET, LONDON, EC1V 9HL
TEL 020 7251 5261 FAX 020 7251 5123 WEB WWW.AHMM.CO.UK

Job title

Camden Lock Village

drawing title / location

Block W - Typical external door details

drawn by	checked	scale	status
JR	KH	1:05 @ A1;1:10 @ A3	STAGE F
project	drawing no.	revision	

14045 WX_(21)_6050 T02