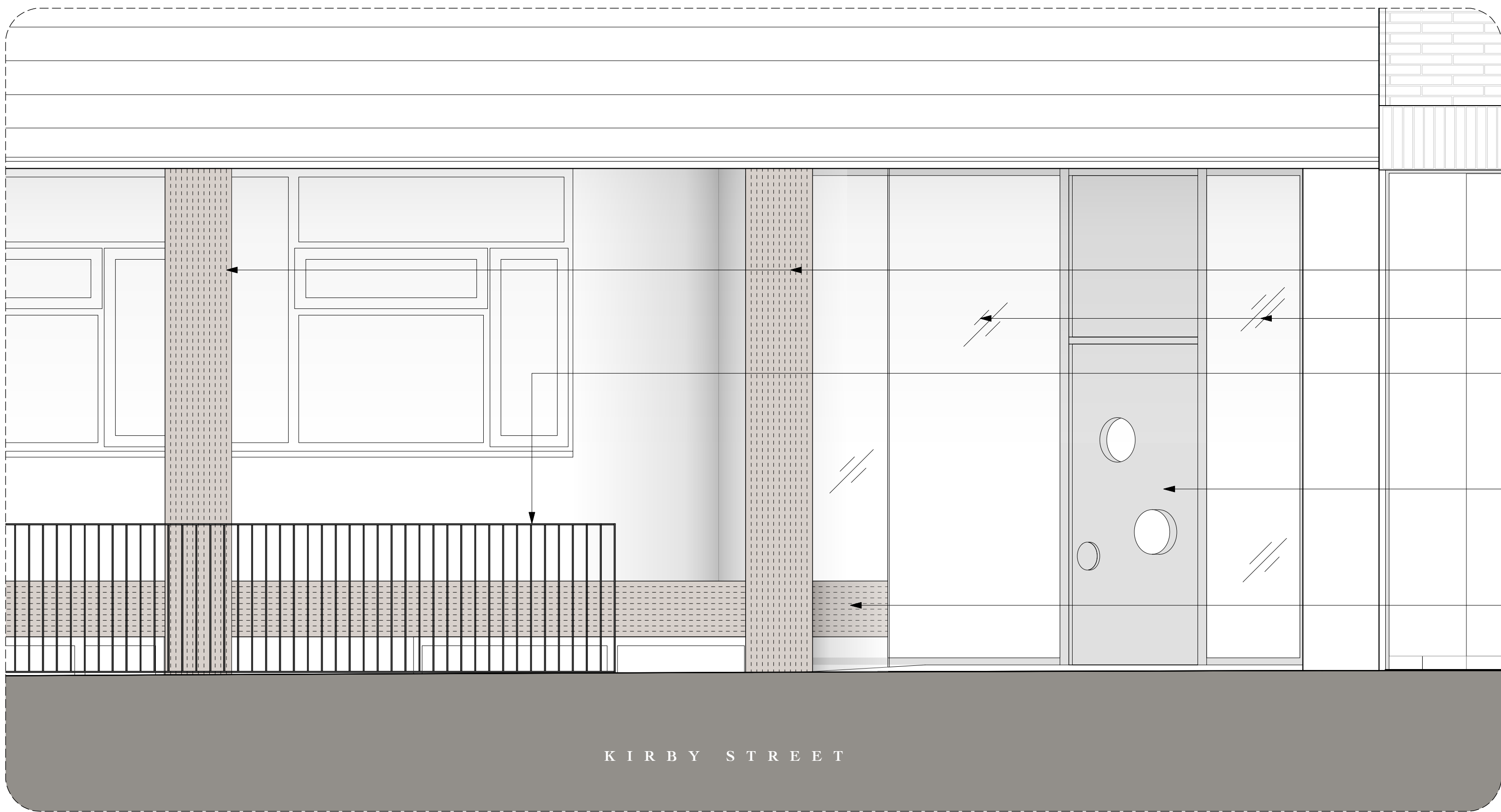


- Existing red rubber cladding to columns
- Existing glazed panels and powdercoated frames
- Existing powdercoated door, frame and over panel with circular galzed panels and handle
- Existing glazed panels and powdercoated frames
- Existing black painted metail railings

1 Existing Arrangement - Ground Floor  
Scale 1:25 @A1



- Existing red rubber cladding to columns
- Existing glazed panels and powdercoated frames
- Existing black painted metail railings
- Existing powdercoated door, frame and over panel with circular galzed panels and handle
- Existing red rubber cladding to facade band

2 Existing Arrangement - Ground Floor  
Scale 1:25 @A1

GENERAL NOTES:

All dimensions to be checked on site prior to commencement of any works, and/or preparation of any shop drawings.

Sizes of and dimensions to any structural elements are indicative only. See structural engineers drawings for actual sizes / dimensions.

Sizes of and dimensions to any service elements are indicative only. See service engineers drawings for actual sizes and dimensions.

This drawing to be read in conjunction with all other Architect's drawings, specifications and other Consultants' information.

All proprietary systems shown on this drawing are to be installed strictly in accordance with the Manufacturers/Suppliers recommended details.

Any discrepancies between information shown on this drawing and any other contract information or manufacturers/suppliers recommendations is to be brought to the attention of the Architect

DO NOT SCALE FROM THIS DRAWING.

NOTES.

DRAFT

P1	Issued for Planning Approval	24/08/16
REVISION	DATE	
Buckley Gray Yeoman		
Studio 4.04 The Tea Building 56 Shoreditch High Street London E1 6JJ T: 020 7033 9913 F: 020 7033 9914		
CLIENT	The Office Group	
PROJECT	31–35 Kirby Street	
DRAWING	Entrance Door Details EXISITNG ARRANGEMENT	
SCALE	1:10 @ A1 (1:20 @ A3)	
DATE	Aug. 2016	DRAWN BY VL
DWG No.	978_EX-10	REVISION P1
DRAWING STATUS	PLANNING	