

Document name: **328 CITE/HA CON7**

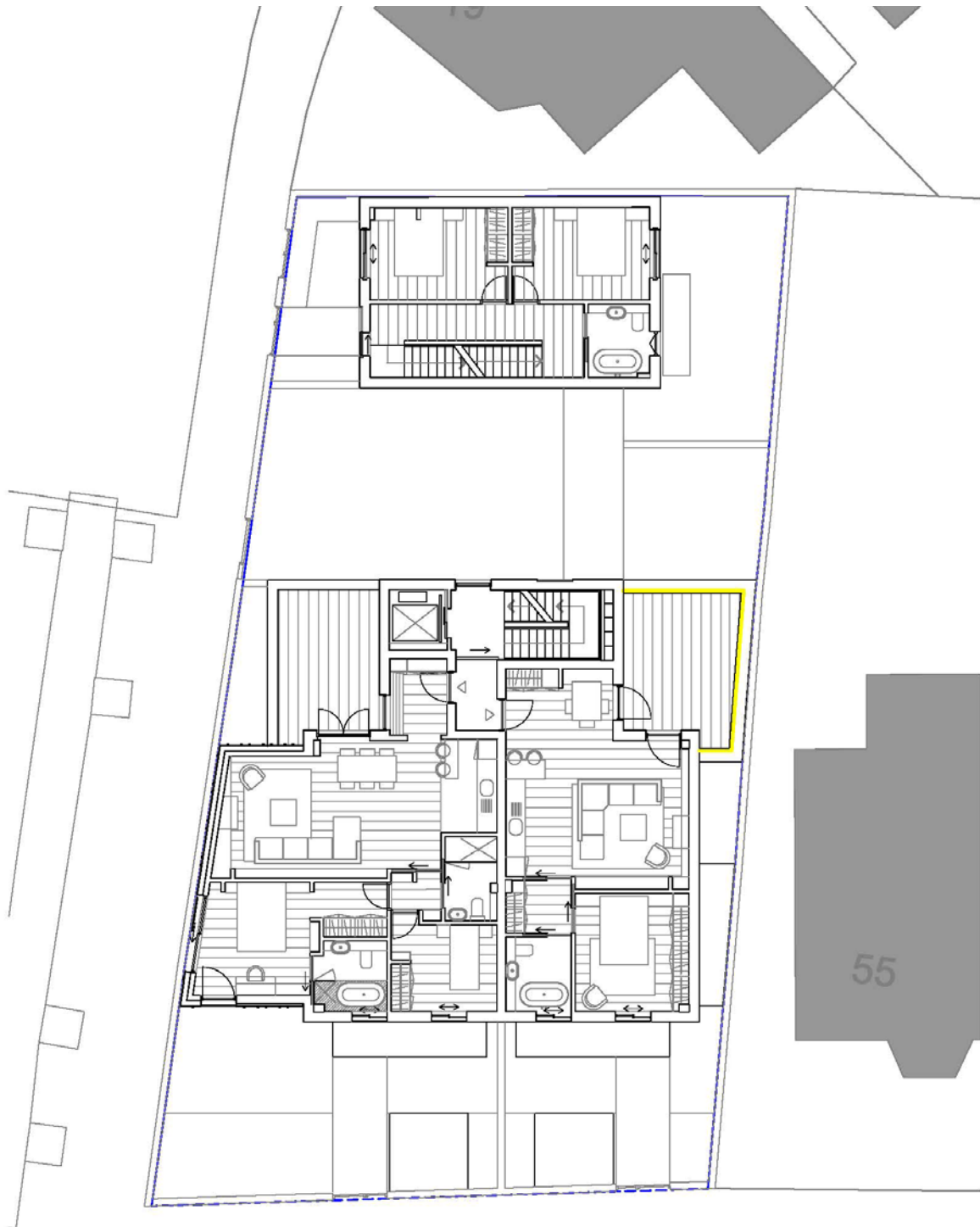
Issue date: 30/06/16

*'Prior to the first occupation of any residential unit, full details (elevations, sections details of material and specifications) of the measures to prevent unreasonable overlooking of neighbouring premises from external terraces shall be submitted to and approved in writing by the local planning authority. The measures subsequently approved shall be fully implemented in advance of the first occupation of the relevant unit and shall be permanently retained thereafter.'*

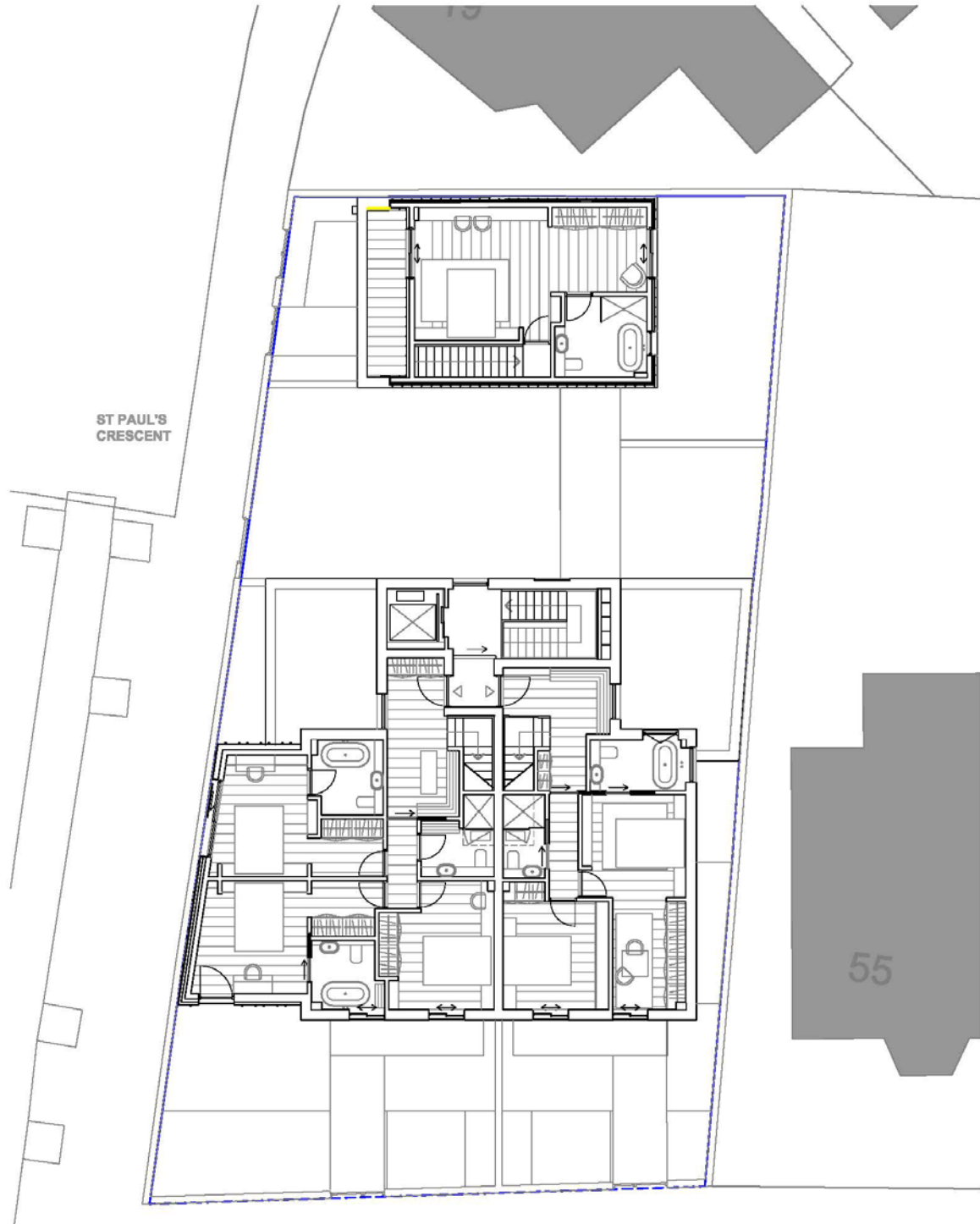
1. Location of the measures to prevent overlooking .....	page 02
2. Description of the solution proposed .....	page 05
3. Design proposed .....	page 06

1. Location of the measures to prevent overlooking

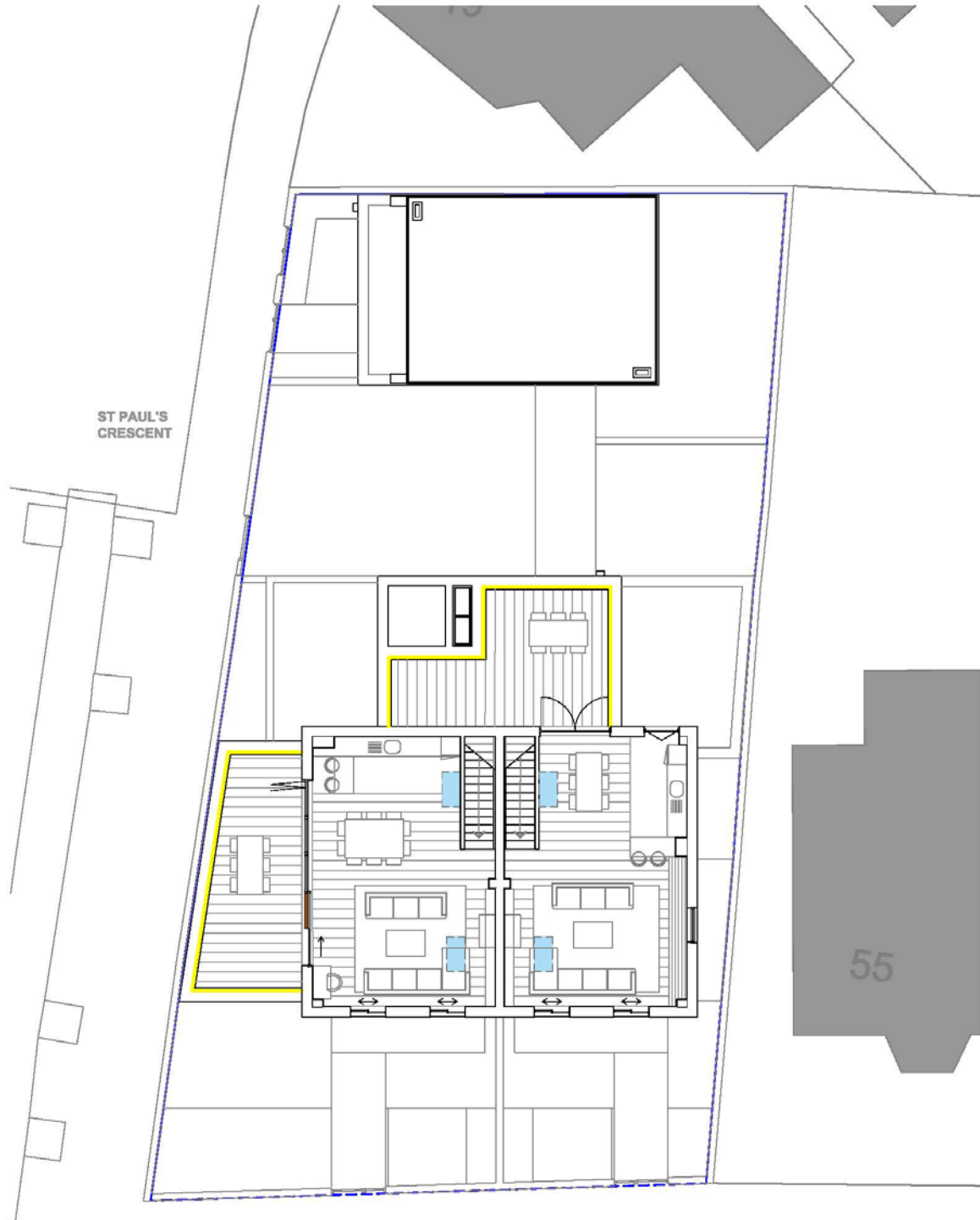
Highlighted in yellow is the perimeter of each terrace that will need to have fencing to prevent overlooking of neighbouring properties.



First floor plan



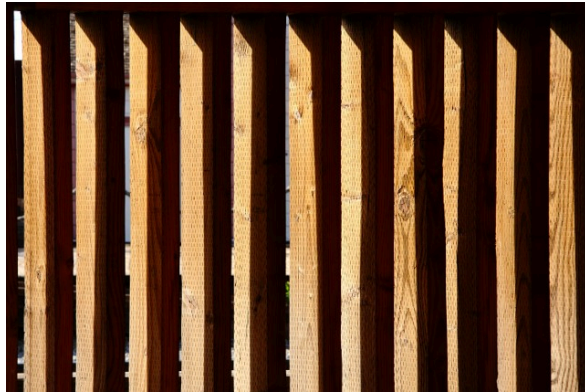
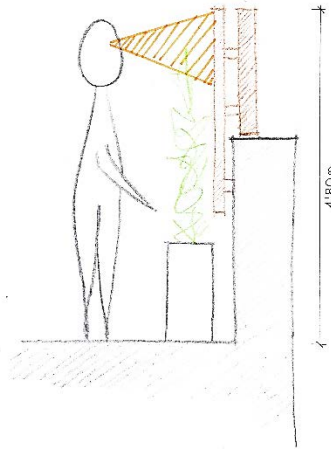
Second floor plan



Third floor plan

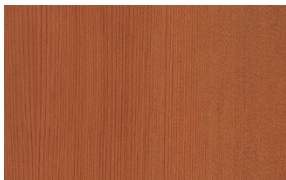
2. Description of the solution proposed

Solution: wooden screen made from crosswise slats rising to a minimum height of 1.80 m.

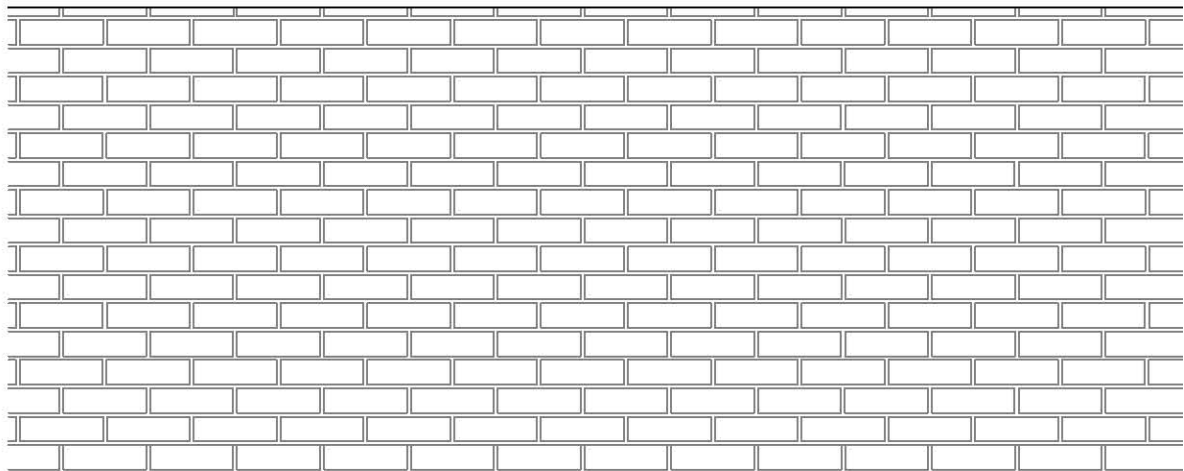
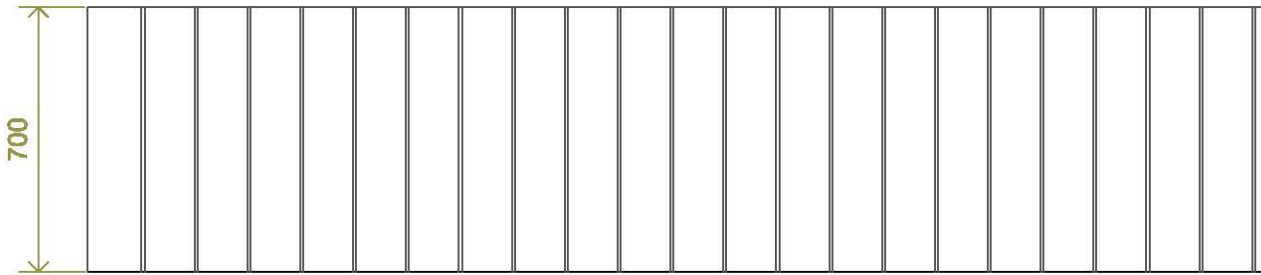


Company:  (or similar)  
T I M B E R C E N T R E . c o m

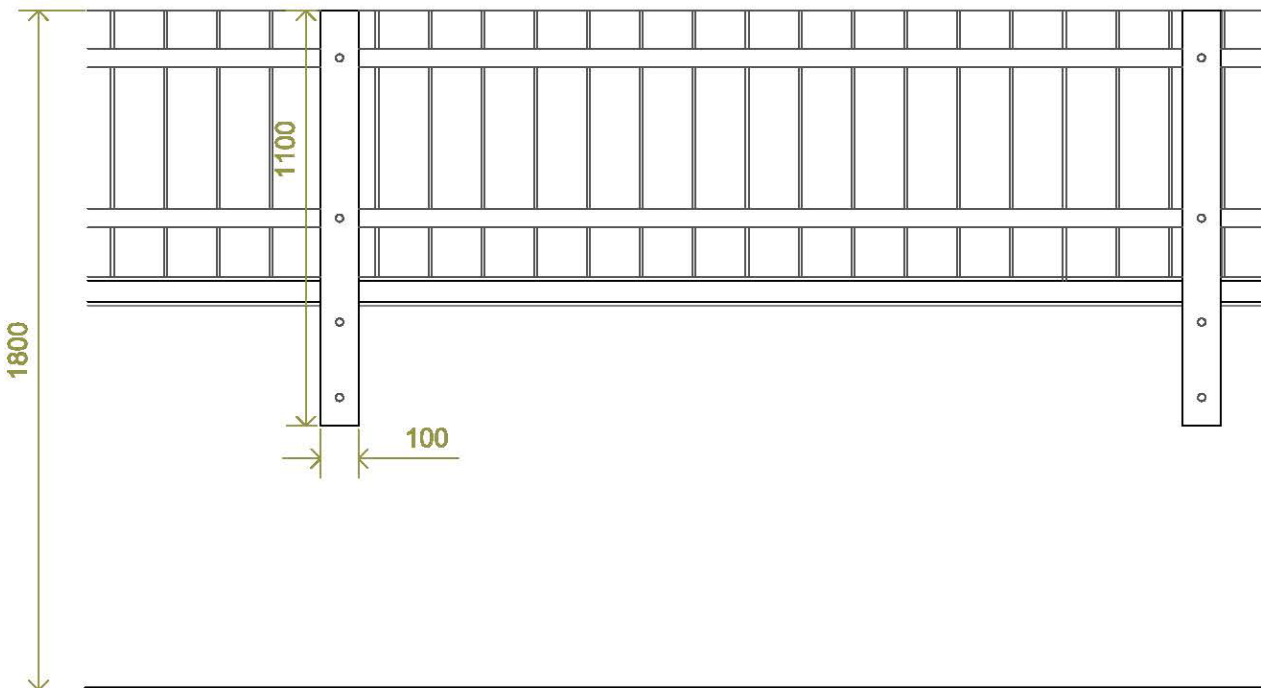
Colour/ type: Red Cedar (as sample submitted for Condition 3 on 18/09/2015)



3. Design proposed



External elevation  
scale 1:20



Internal elevation  
Scale 1:20

