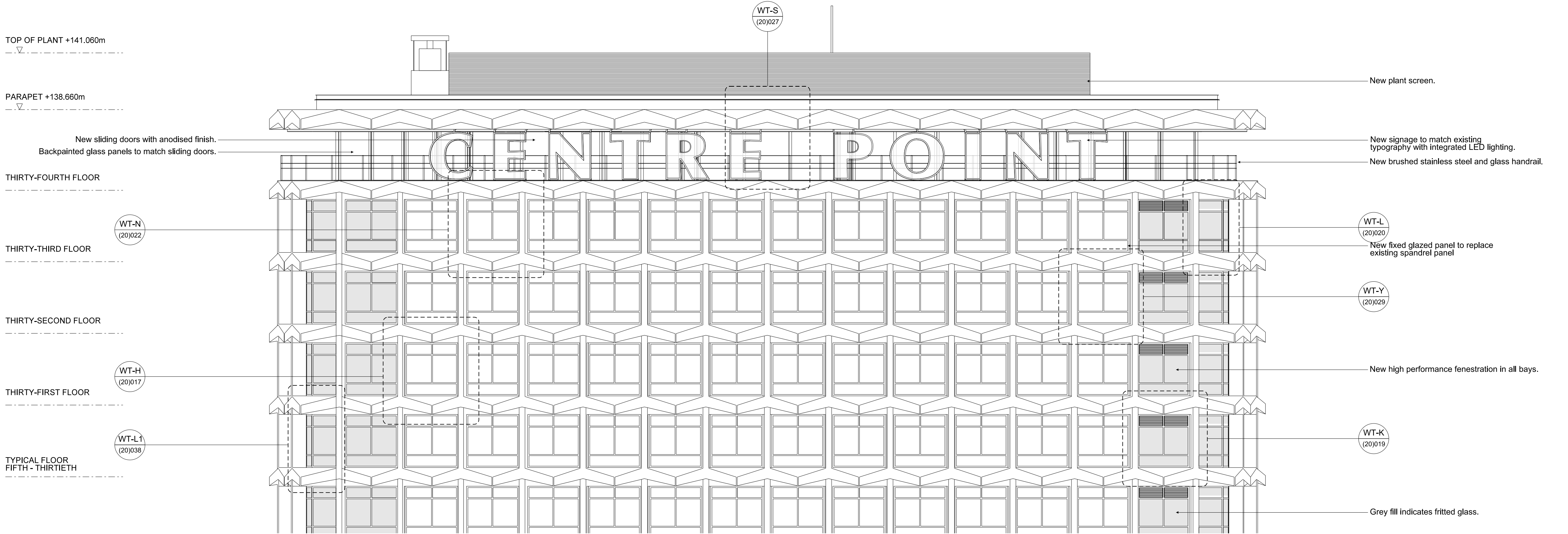
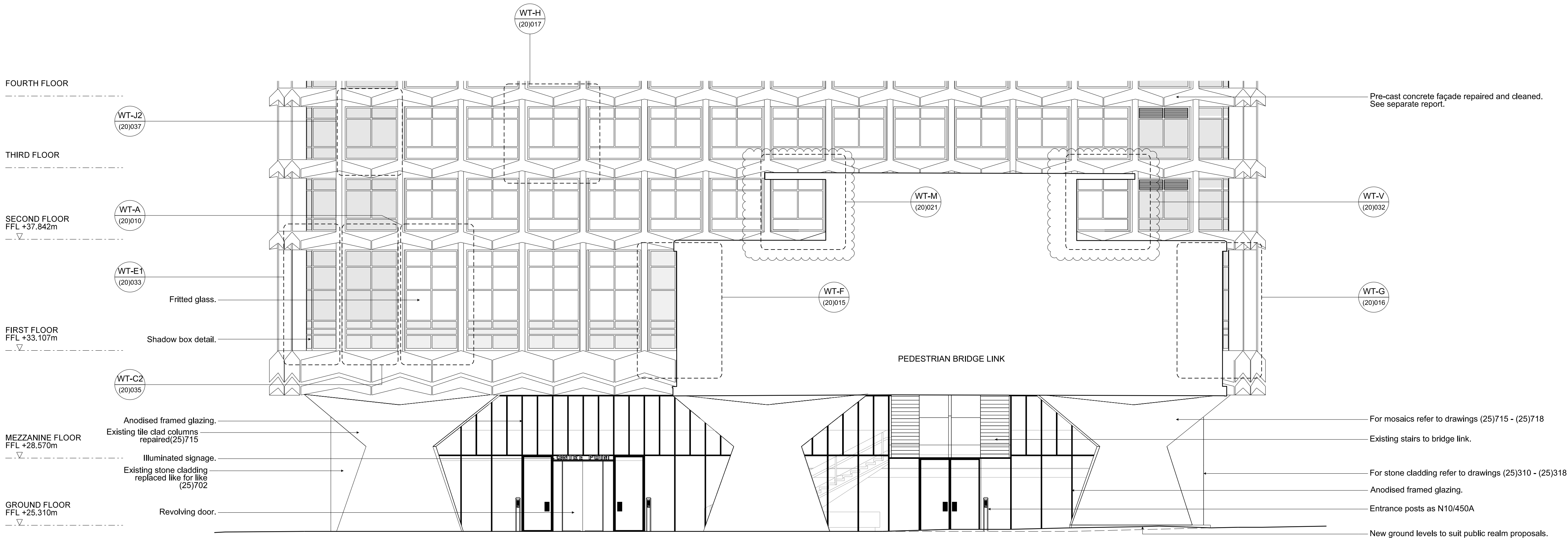


18/11/2014 T:\2332 Centre Point\02-Sheets\21 Series CA Sections Elevations\2332\21\001_Proposed_Elevation_East CPT.dgn 2332 Conran



1 ELEVATION EAST PROPOSED 1:100
UPPER LEVELS



2 ELEVATION EAST PROPOSED 1:100
LOWER LEVELS

Notes

H	18.11.14	Facade updated to reflect details	PG	AS
G	31.03.14	Frit omitted, Text updated	MJM	AS
F	30.04.13	Entrance posts updated	AS	AS
E	04.12.12	Stage E Cladding Construction Issue	PG	AS
D	23.11.12	Stage D Addendum 33FL Glazing modified	PG	AS
C	31.08.12	Stage D	MB	AS
B	03.08.12	Stage D Draft	TG	AS
A	01.06.12	Tender Issue	TG	AS
-	22.05.12	Draft Tender Issue	NT	AS

Rev	Date	Reason	By	Ckd
-----	------	--------	----	-----

CONRAN+ PARTNERS
Architects Designers

LONDON OFFICE
Conran Building,
22 Shad Thames,
London SE1 2YU
Telephone +44 (0) 20 7403 8899
Email cp@conran.com

Project: Centre Point
Client: Almacantar
Drawing title: GA PROPOSED ELEVATION
EAST - LOWER AND UPPER LEVELS
Scale 1:100@A1 Date: May 2012 Drawn by: NT
Project number: 2332 Drawing No: (21)001 Rev: H
Status: STAGE E Checked by: AS