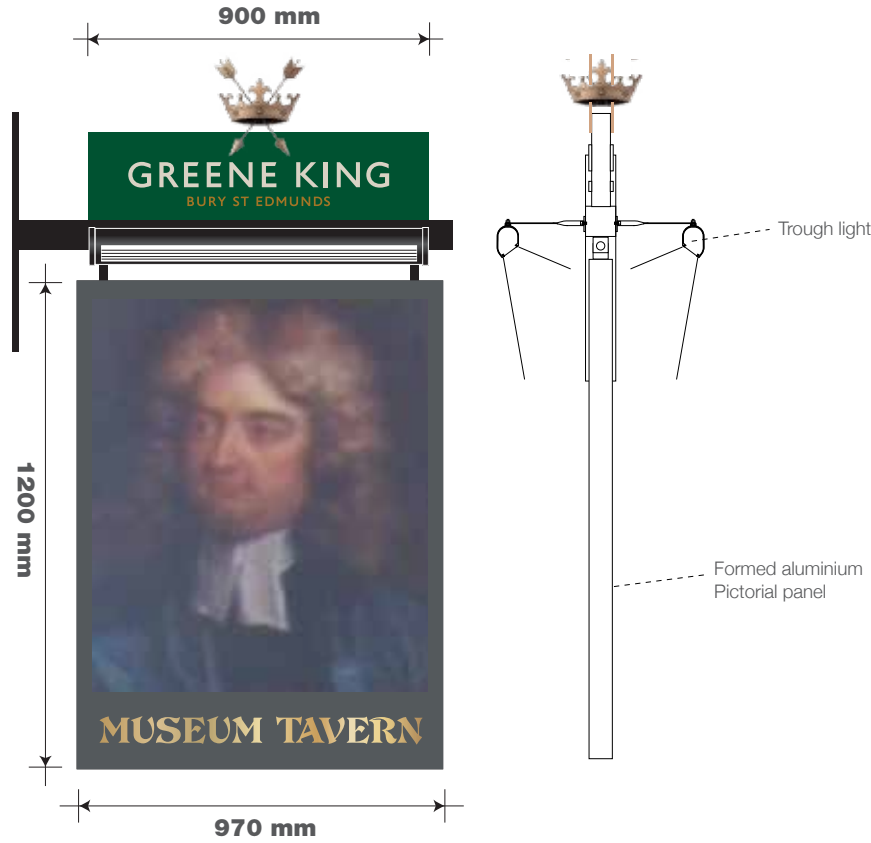


ITEM 01 (Qty 1)
New pictorial sign retaining existing image to existing bracketwork with new Greene King header unit, and new trough light illumination.
Scale 1:20



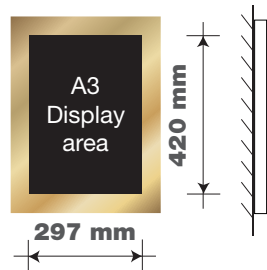
ITEM 02 (Qty 1)
New glass LED illuminated fascia sign.
Scale 1:20



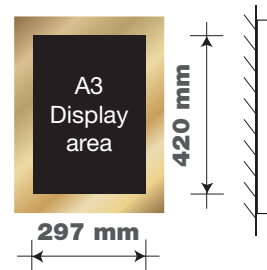
ITEM 03 (Qty 1)
New glass LED illuminated fascia sign.
Scale 1:20



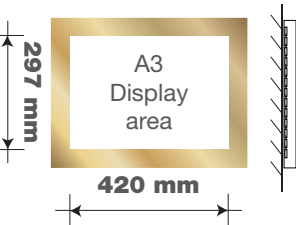
ITEM 04A (Qty 1)
Brass A3 chalkboard to replace existing.
Scale 1:20



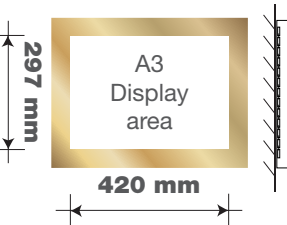
ITEM 04B (Qty 1)
Brass A3 chalkboard to replace existing.
Scale 1:20



ITEM 05A (Qty 1)
Brass A3 Display area back lit (LED) menu case.
Scale 1:20



ITEM 05A (Qty 1)
Brass A3 Display area back lit (LED) menu case.
Scale 1:20

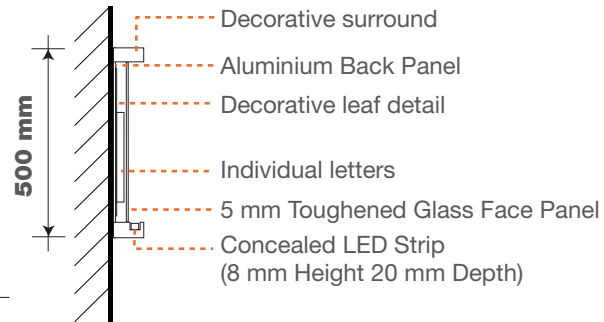
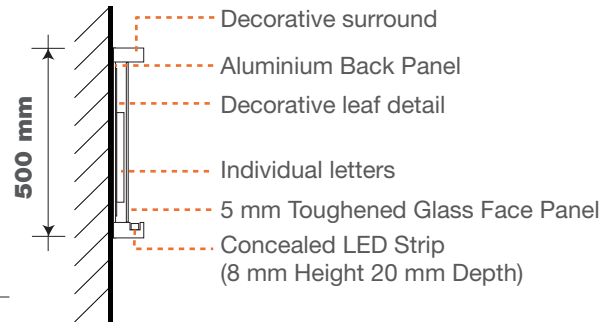


ITEM 06 (Qty 1)
New vinyl to glass panel above doors.
Scale 1:20



sign colours	
GK Green Pantone 3435	GK Stone Pantone 7527
Black	Brass
GK Bronze Pantone 875	RAL 7011
Light Gold	RAL 1013

typefaces
Housename text DevinneOpti-Ornamented
secondary text Mercury Text GI Roman



ITEM 07 (Qty 1)

Brass GK plaque engraved and
infilled with black.
Scale 1:10



ITEM 08 (Qty 1)

Brass framed history board
Scale 1:20



GREENE KING.
MUSEUM TAVERN
49 GREAT RUSSEL ST
BLOOMSBURY
LONDON
WC1B 3BA

122334 REV A
02/09/16 - JMS





EXISTING FRONT ELEVATION

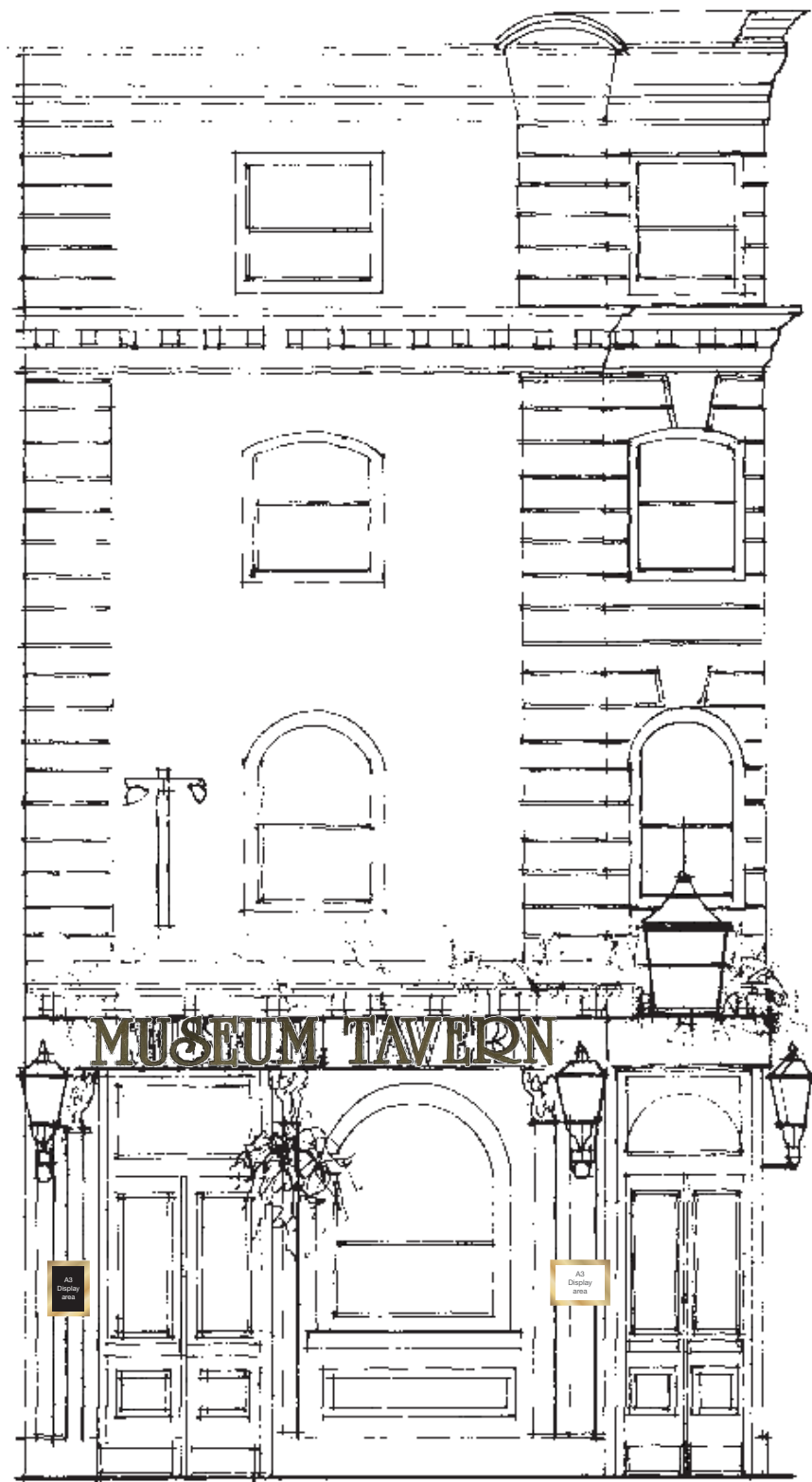


Scale 1:50 @ A3

GREENE KING.
MUSEUM TAVERN
49 GREAT RUSSEL ST
BLOOMSBURY
LONDON
WC1B 3BA

122334 REV A
02/09/16 - JMS

!a
ashleighsigns.co.uk



EXISTING SIDE ELEVATION.



Scale 1:50 @ A3

GREENE KING.
MUSEUM TAVERN
49 GREAT RUSSEL ST
BLOOMSBURY
LONDON
WC1B 3BA

122334 REV A
02/09/16 - JMS





PROPOSED FRONT ELEVATION

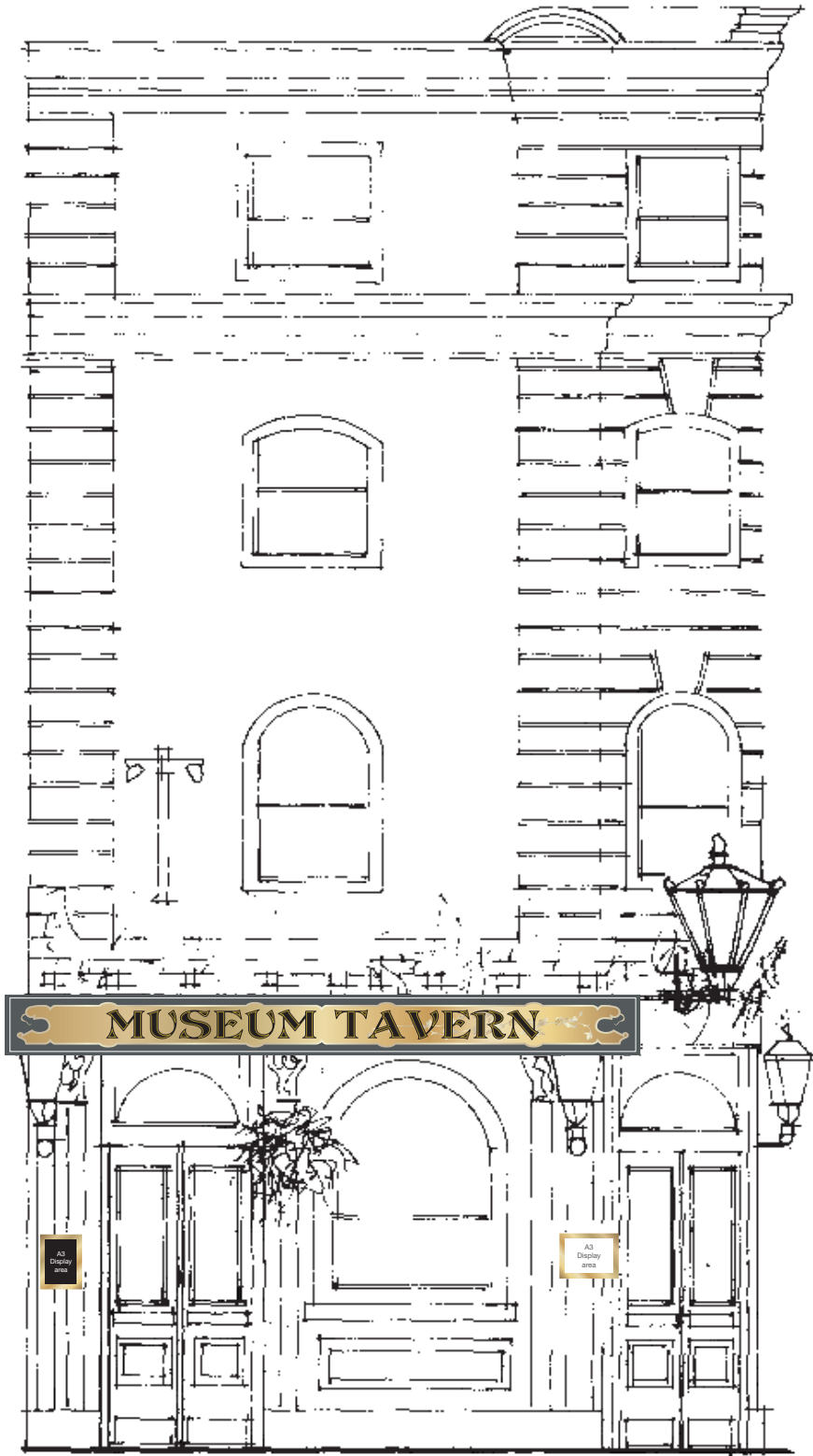


Scale 1:50 @ A3

GREENE KING.
MUSEUM TAVERN
49 GREAT RUSSEL ST
BLOOMSBURY
LONDON
WC1B 3BA

122334 REV A
02/09/16 - JMS

!a
ashleighsigns.co.uk



PROPOSED SIDE ELEVATION .



Scale 1:50 @ A3

GREENE KING.
MUSEUM TAVERN
49 GREAT RUSSEL ST
BLOOMSBURY
LONDON
WC1B 3BA

122334 REV A
02/09/16 - JMS



01

02

04 A

03

05 B

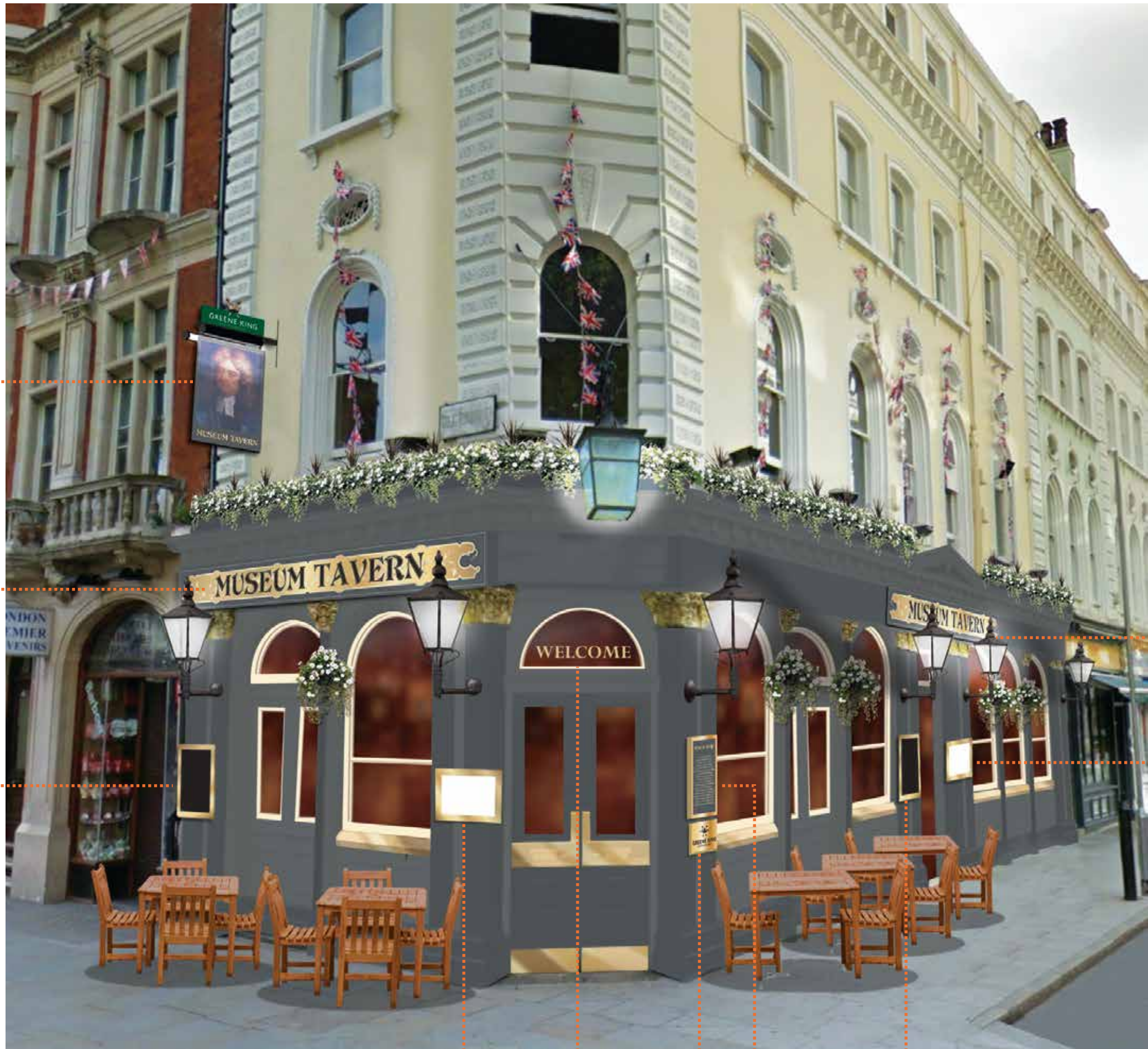
05 A

06

07

08

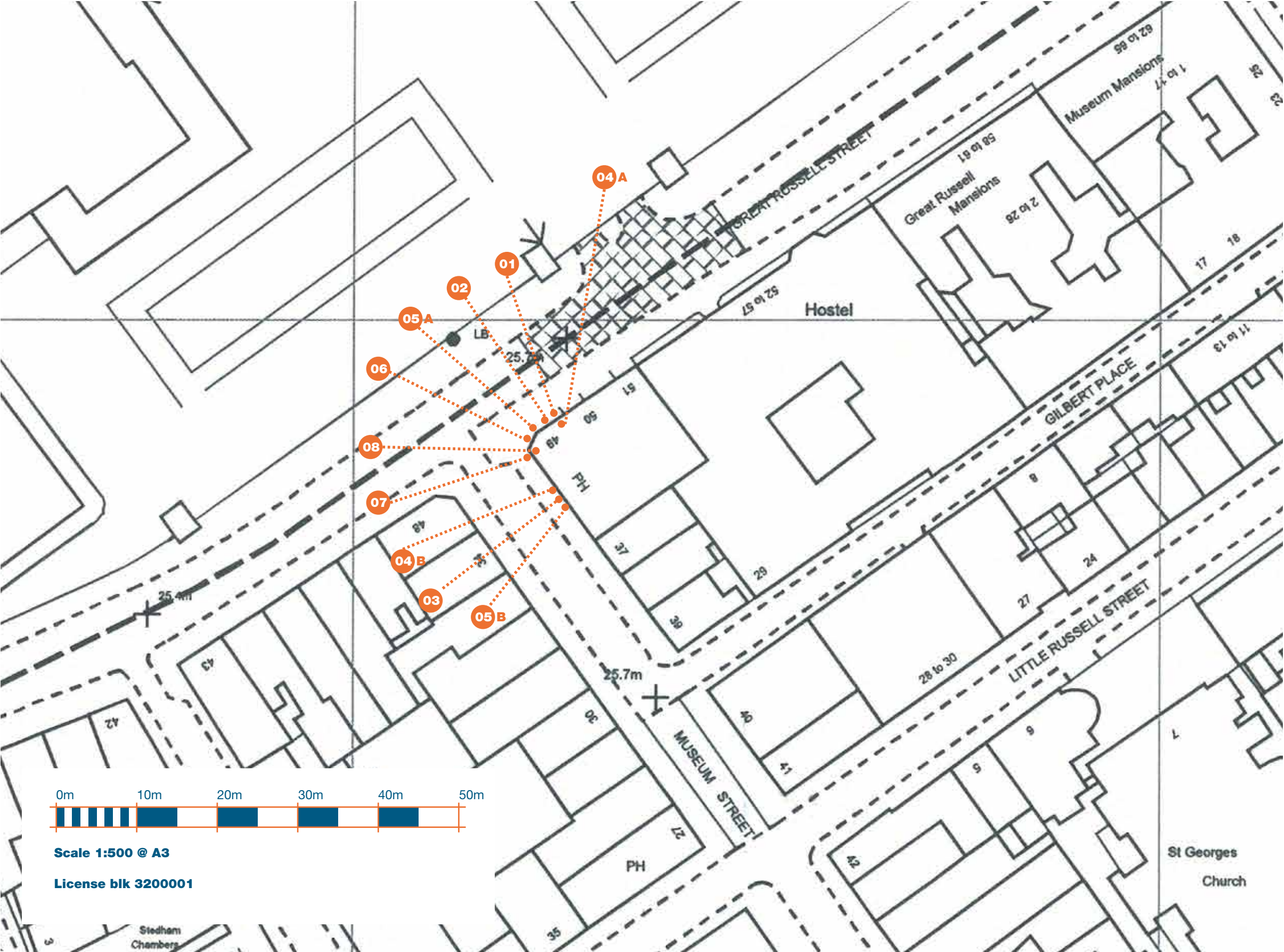
04 B



GREENE KING.
MUSEUM TAVERN
49 GREAT RUSSEL ST
BLOOMSBURY
LONDON
WC1B 3BA

122334 REV A
02/09/16 - JMS

!a
ashleighsigns.co.uk



GREENE KING.
MUSEUM TAVERN
49 GREAT RUSSEL ST
BLOOMSBURY
LONDON
WC1B 3BA

122334 REV A
02/09/16 - JMS

