
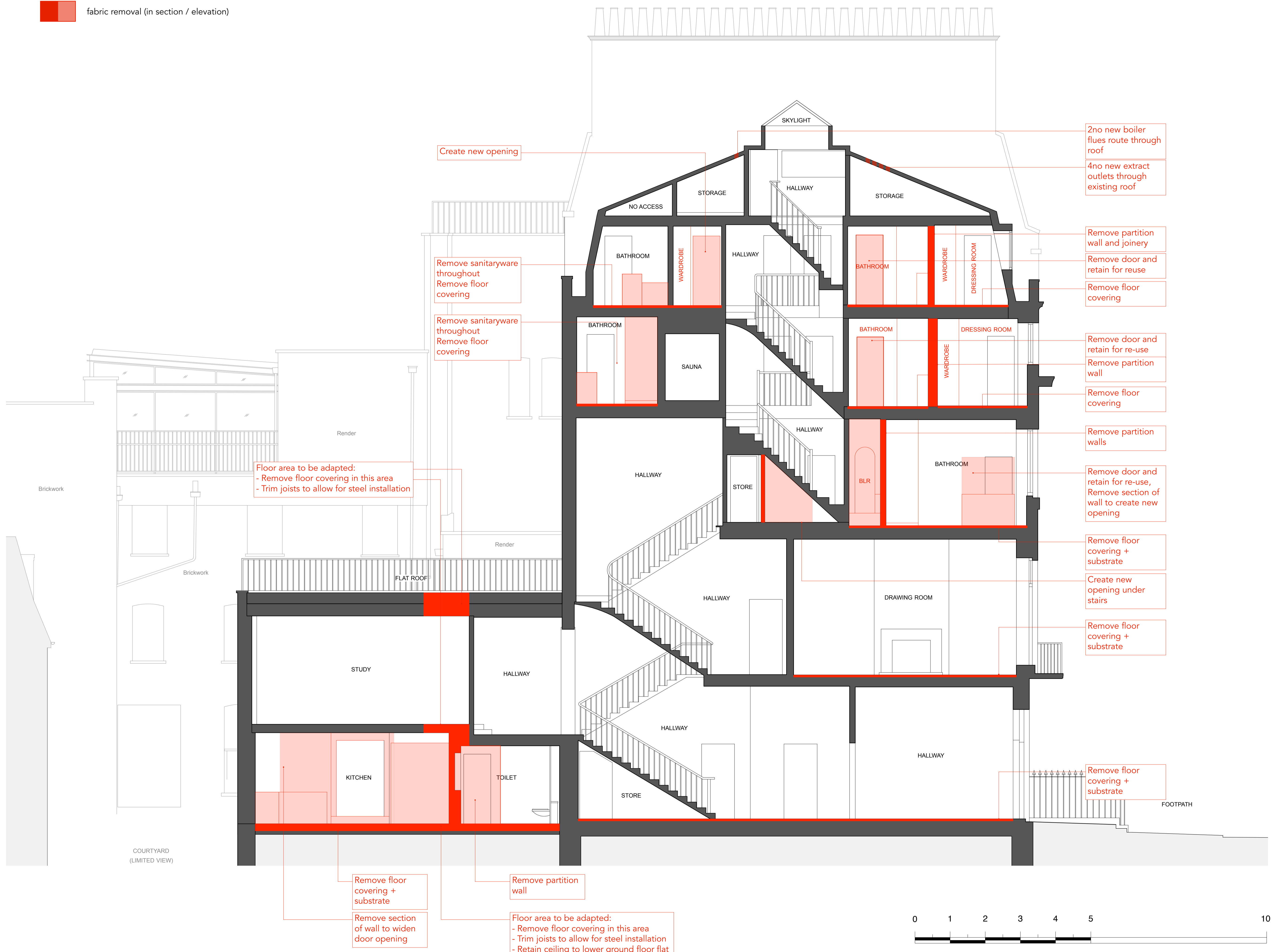
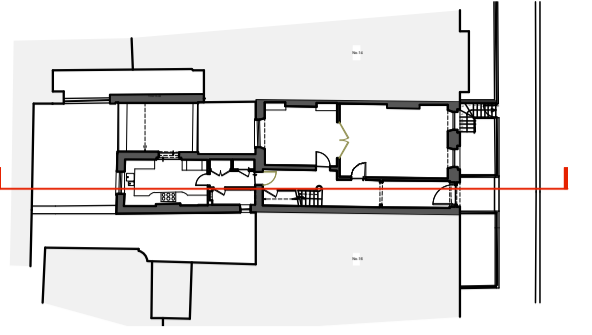


SECTION A-A

 fabric removal (in section / elevation)



2no new boiler flues route through roof
4no new extract outlets through existing roof

Remove partition wall and joinery
Remove door and retain for reuse
Remove floor covering

Remove door and retain for re-use
Remove partition wall
Remove floor covering

Remove partition walls
Remove door and retain for re-use, Remove section of wall to create new opening

Remove floor covering + substrate
Create new opening under stairs

Remove floor covering + substrate

Remove floor covering + substrate

Floor area to be adapted:
- Remove floor covering in this area
- Trim joists to allow for steel installation

Remove floor covering + substrate
Remove section of wall to widen door opening

Remove partition wall

Floor area to be adapted:
- Remove floor covering in this area
- Trim joists to allow for steel installation
- Retain ceiling to lower ground floor flat

PLANNING APPLICATION + LISTED BUILDING CONSENT

RUNDELL ASSOCIATES

Architecture & Design
12 Salem Rd, London W2 4DL
+44 (0)207 483 8360
office@rundellassociates.com
rundellassociates.com

Client **PIERRE DE WECK**

Structural Engineer **James Frith**

Services Engineer **Rod Werninck**

Quantity Surveyor **Metro Plans**

Project **15 FITZROY SQUARE**

Drawing Title **DEMOLITION SECTIONS SECTION A-A**

Date **12.08.16** Revision

Scale **1:50 @ A1, 1:100 @ A3**

Job No. **3505**


Drawing No. **210 P**

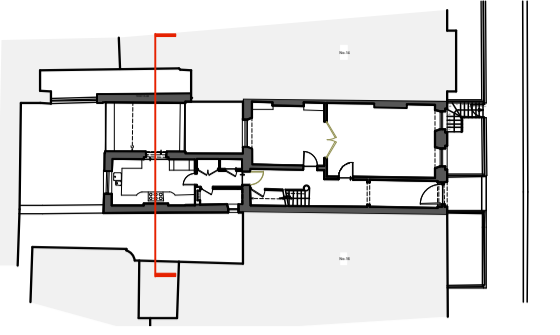
Drawn by **ML** Checked **MR**



Scale 1:50@A1

SECTION C-C

 fabric removal (in section / elevation)



BREAKFAST ROOM:
 - Remove section of wall to widen opening
 - Remove windows
 - Remove existing glass roof
 - Remove floor finishes and substrate to align with new floor level

Remove floor covering + substrate

Remove section of roof covering to allow for new rear extension

Remove partition walls

Remove all kitchen cabinets/appliances

PLANNING APPLICATION
 + LISTED BUILDING
 CONSENT

RUNDELL ASSOCIATES

Architecture & Design
 12 Salem Rd, London W2 4DL
 +44 (0)207 483 8360
 office@rundellassociates.com
 rundellassociates.com

Client **PIERRE DE WECK**

Structural Engineer
James Frith

Services Engineer
Rod Werninck

Quantity Surveyor
Metro Plans

Project **15 FITZROY SQUARE**

Drawing Title
**DEMOLITION SECTIONS
 SECTION C-C**

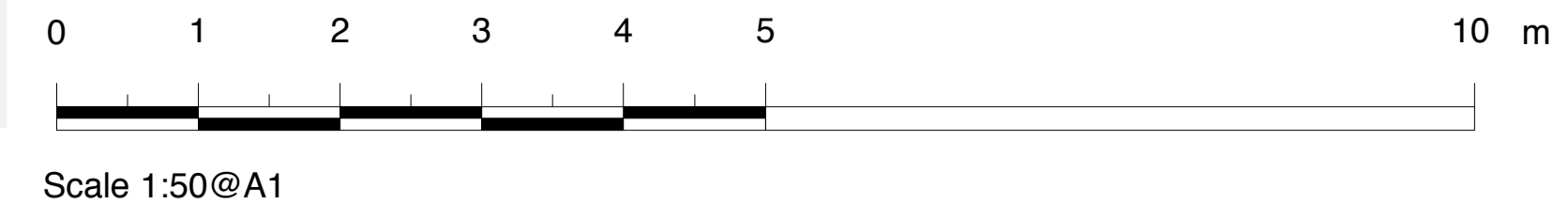
Date **12.08.16** Revision

Scale **1:50 @ A1, 1:100 @ A3**


Job No. **3505**

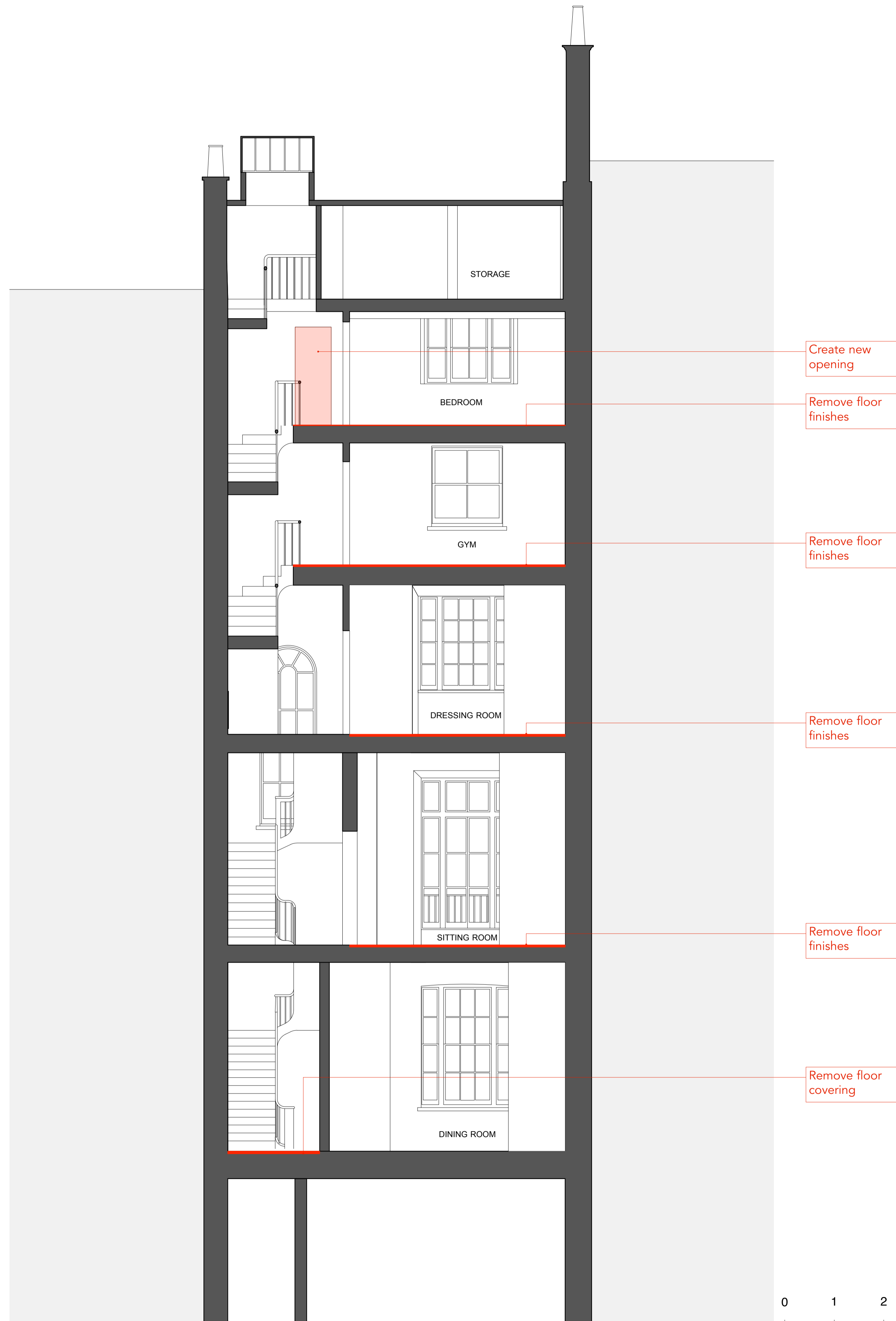
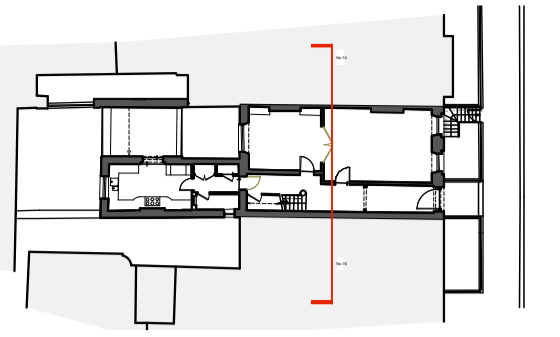
Drawing No. **212 P**

Drawn by **ML** Checked **MR**



SECTION D-D

 fabric removal (in section / elevation)



Create new opening

Remove floor finishes

Remove floor finishes

Remove floor finishes

Remove floor finishes

Remove floor covering

PLANNING APPLICATION
+ LISTED BUILDING
CONSENT

RUNDELL ASSOCIATES		
Architecture & Design 12 Salem Rd, London W2 4DL +44 (0)207 483 8360 office@rundellassociates.com rundellassociates.com		
Client	PIERRE DE WECK	
Structural Engineer	James Frith	
Services Engineer	Rod Werninck	
Quantity Surveyor	Metro Plans	
Project	15 FITZROY SQUARE	
Drawing Title	DEMOLITION SECTIONS SECTION D-D	
Date	12.08.16	Revision
Scale	1:50 @ A1, 1:100 @ A3	
Job No.	3505	
Drawing No.	213 P	
Drawn by	ML	Checked MR

