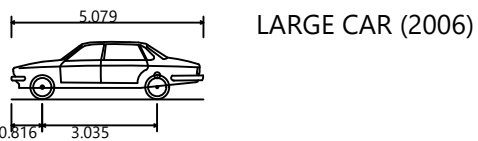


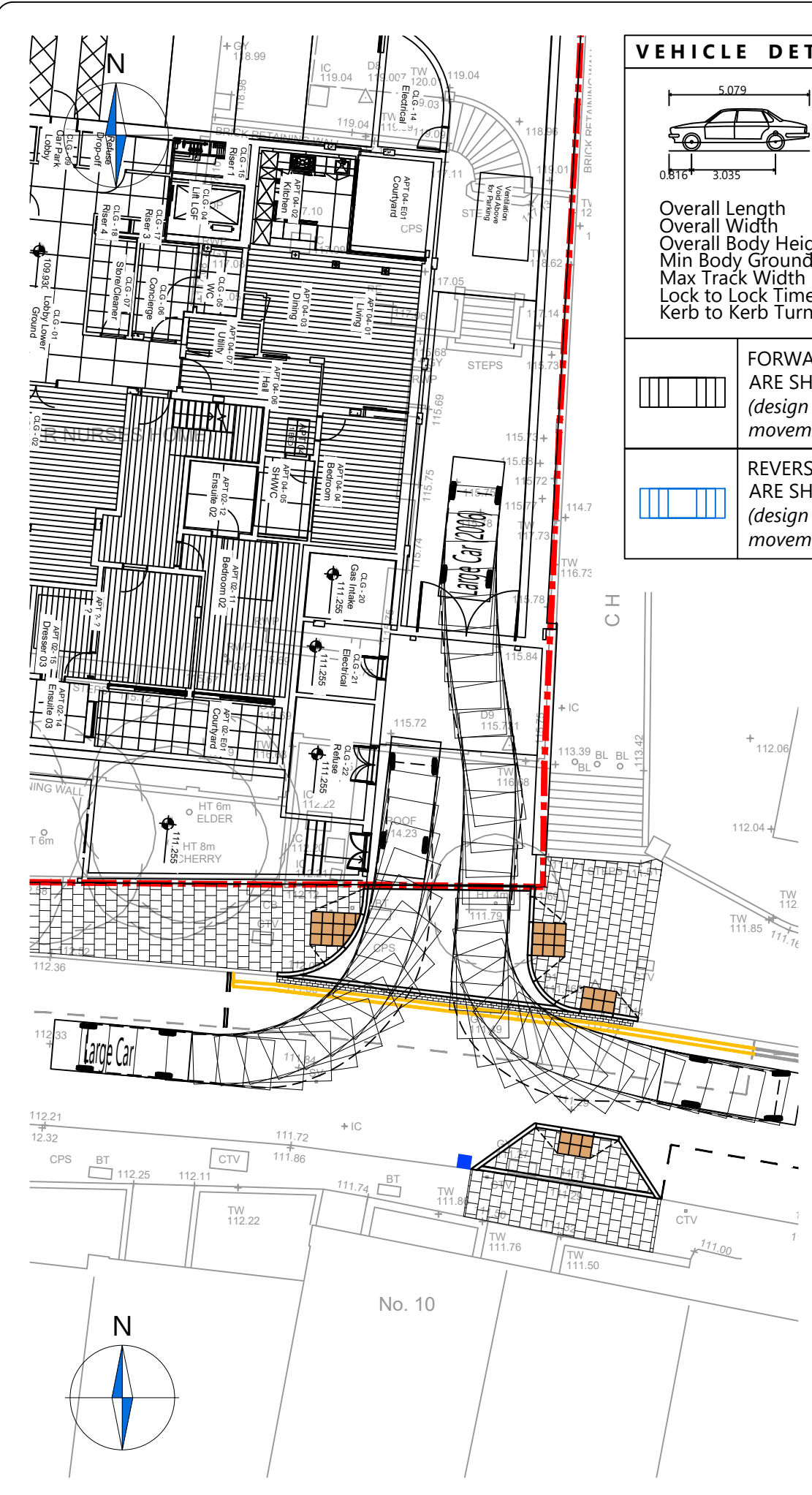
VEHICLE DETAILS:



Overall Length 5.079m
 Overall Width 1.872m
 Overall Body Height 1.525m
 Min Body Ground Clearance 0.310m
 Max Track Width 1.831m
 Lock to Lock Time 4.00s
 Kerb to Kerb Turning Radius 5.900m

FORWARD MOVEMENTS ARE SHOWN IN BLACK (design speed for all forward movements - 5kph)

REVERSE MOVEMENTS ARE SHOWN IN BLUE (design speed for all reverse movements - 2.5kph)



NOTES

- GENERAL**
1. Do not scale from this drawing.
 2. This drawing to be read in conjunction with other contract drawings.
 3. This drawing to be read & printed in colour.

- DISCLAIMERS**
1. The topographical survey has been provided by RPS Group (drawing No. JKK4657-01 rev A), and Caneparo Associates shall not be liable for any inaccuracies or deficiencies.
 2. The internal layout has been provided by KSR Architects (drawing No. 15031-10-100_C), and Caneparo Associates shall not be liable for any inaccuracies or deficiencies.

B	Kerbed buildout relocated to the opposite side of the road. On-street parking added.	DW	BS	12.09.2016
A	Internal layout updated to the KSR Architects drawing No. 15031-10-100_C	DW	BS	21.07.2016

Rev	Details	REVISION HISTORY		Drawn	Checked	Date
Status: <input type="checkbox"/> Preliminary <input type="checkbox"/> For Approval <input type="checkbox"/> For Construction <input checked="" type="checkbox"/> For Information <input type="checkbox"/> For Tender <input type="checkbox"/> As Built						

Client: **LINTON**

Project: **29 New End**

Drawing Title: **S278 Highway Works
 Vehicular Swept Paths Analysis of the Proposed Access**

Scale: **1:200** Size: **A3**

Drawn by: **DW** Checked by: **BS** Date: **17.02.2016**

CANEPARO ASSOCIATES
 Transport Planning & Highway Design
 131-151 Great Titchfield Street • London • W1W 5BB • Tel. 020 3542 4840

Scheme Ref:	Drawing No:	Sheet:	Rev:
2668	DD/TR01	1 of 1	B

NOTE: The property of this drawing and design is vested in Caneparo Associates Ltd. It must not be copied or reproduced in any way without their prior written consent. © Caneparo Associates Ltd. Registered in England, No. 9930032. All rights reserved.

CA_2668_DD_TR01 - VEHICULAR SWEEP PATHS ANALYSIS OF THE PROPOSED ACCESS.DWG