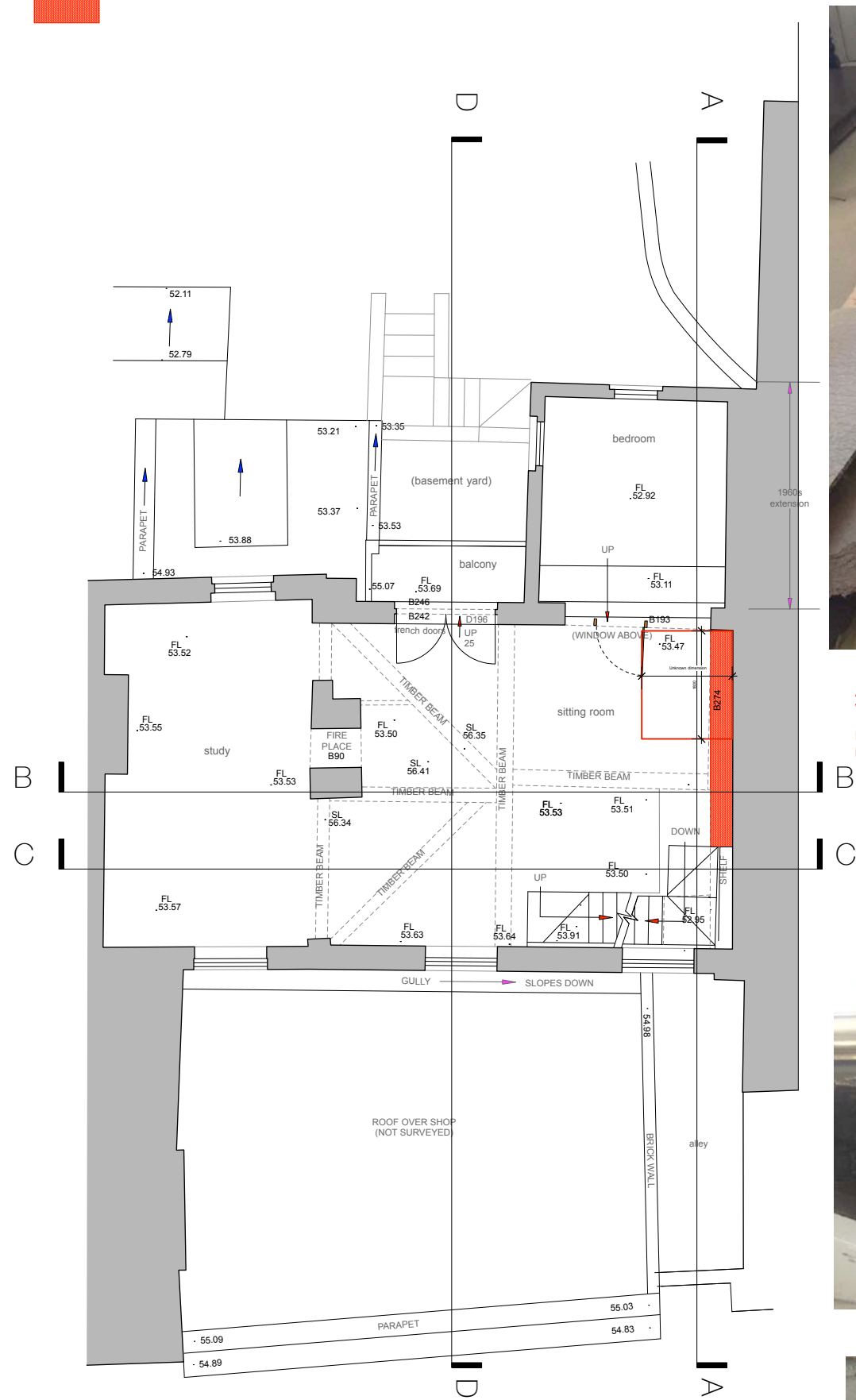


Area of Opening up

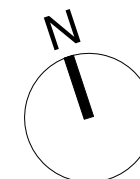
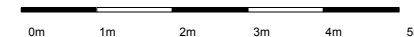


First Floor Plan - Existing



As identified in the photos joists 1-7 are new joists hung off the original edge beam by hangers, with joist 8-11 being the original beams notched into the original edge beam.

Beams 8 & 9 are doubled up to indicate an edge beam of a possible previous stair double trimmed perimeter opening.



- NOTES
1. This drawing must not be scaled
 2. The contractor is to check all dimensions on site

-		Issued for Planning	Aug 2016
no.	revision	date	
dwg type		GENERAL ARRANGEMENT	
dwg status		PLANNING	
Sacks Maguire Architects 155a Regents Park Road London NW1 8BB Telephone 020 7722 9298 Fax 020 7431 4398			
Project: Old Bank House, 14 Hampstead High Street, London NW3 1PX			
Title: First Floor Plan - Area of Opening up			
Client: Mr G Moran			
scale	1:50 @ A1	drawn	DD
	1:100 @ A3		August 2016
job number	619	drawing number	P103
		revision	