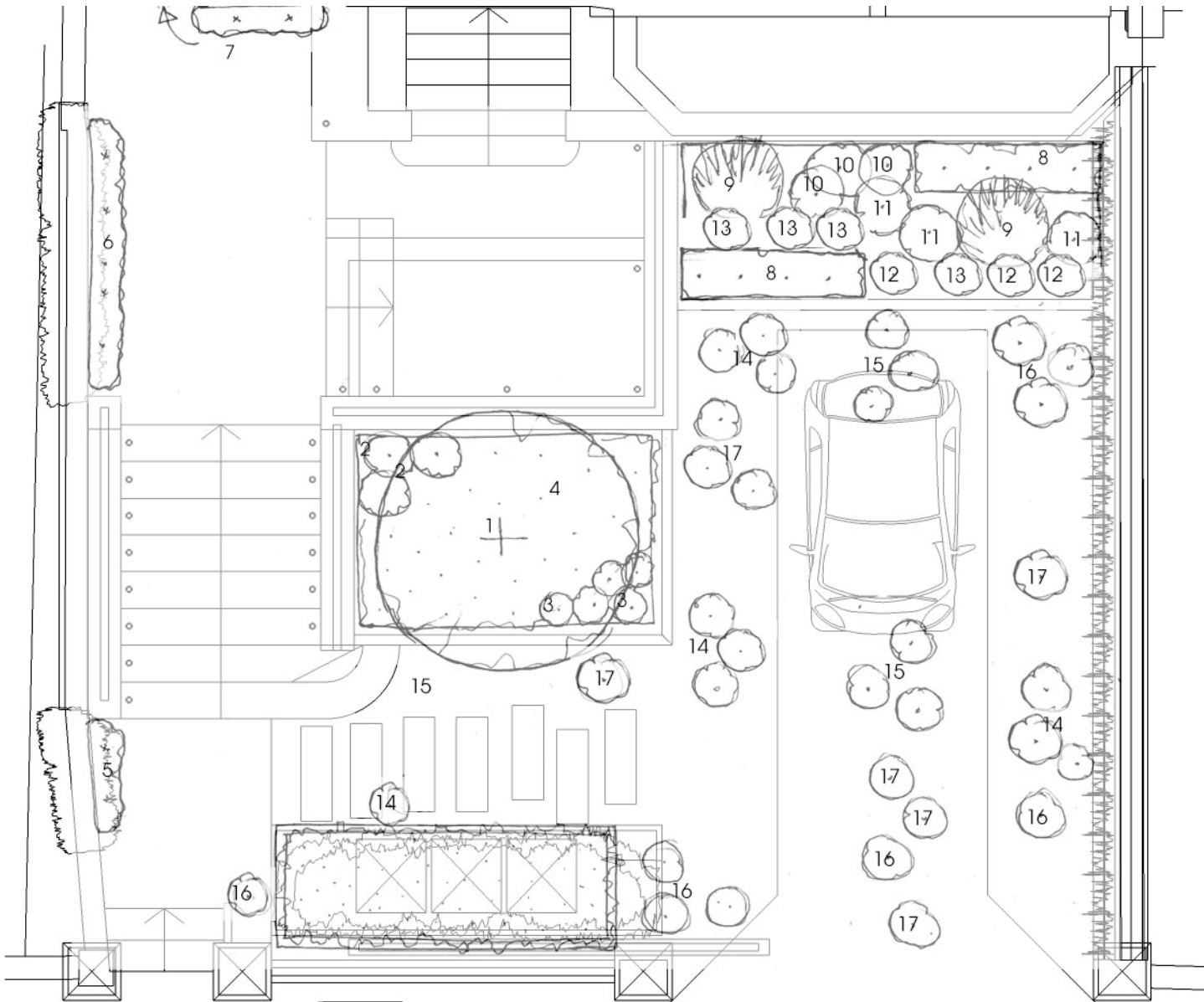


Front Garden Planting Plan

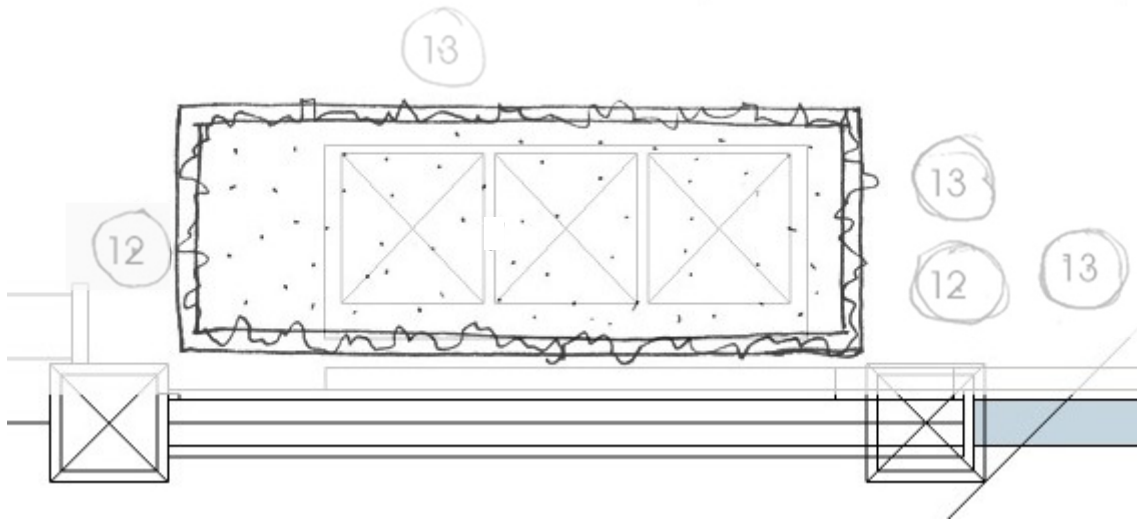
40 Arkwright Road, London

16/08/2016 revision 2



Planting Plan

1. *Betula pendula* - multi-stem
2. *Digitalis excelsior* - white
3. *Tiarella Tiger Stripe*
4. Underplanting mix:
Ajuga reptans
Primula vulgaris
Viola odorata Alba
Cornus canadensis
Polypodium vulgare
5. *Trachelospermum jasminoides*
6. *Jasminum Clotted Cream*
Lonicera Aureoreticulata
7. *Rosa Mermaid*
8. *Buxus Faulkner*
9. *Molinia caerulea Transparent*
10. *Perovskia Little Spire*
11. *Kniphofia Little Maid*
12. *Achillea Terracotta*
13. *Alium hollandicum*
- 14 on Gravel planting - see page 4



Planting to Green Roof

1. Delosperma cooperi
2. Sedum vars such as:
 - S. Weihenstephaner Gold
 - S. Dragons Blood
 - S. album
 - S. Blue carpet
3. Sempervivum vars
4. Helianthemum mummularium

Growing medium:

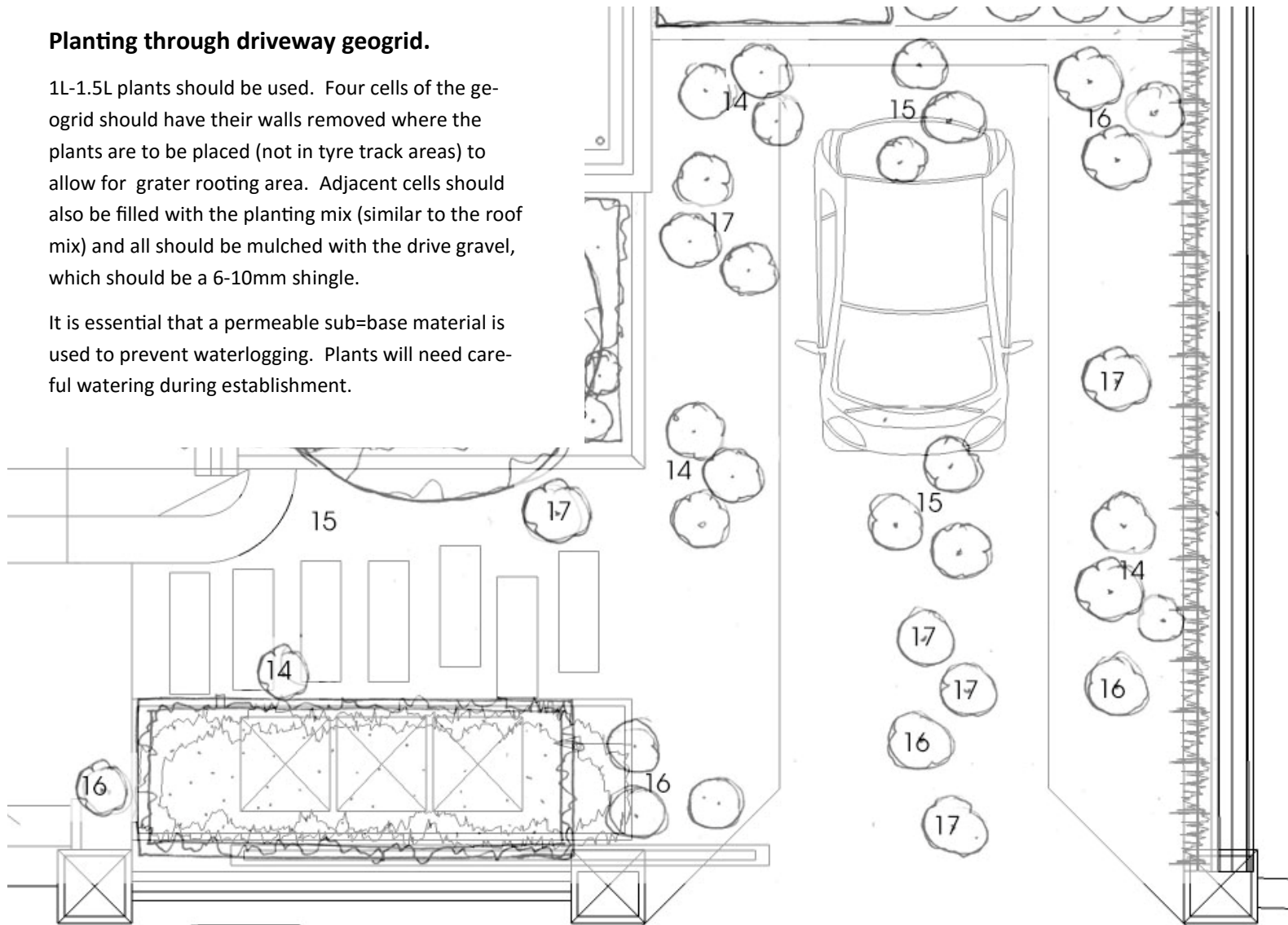
A lightweight gravel/compost (peat-free) mix with some slow release nutrient and water retaining substance (gel etc) should be used. A minimum depth of 150mm should be allowed for as we want plants to grow well. The roof can be constructed from 18mm marine ply with a waterproof membrane over and a drainage geocomposite layer laid over. Drainage spillway at rear should be raised 20-30mm so that a reservoir of water is held at the base before run-off occurs.

Plants should be either plugs, planted at 100mm intervals or 9cm pots, planted at 250mm centres. Planting to be mulched with same gravel as drive.

Planting through driveway geogrid.

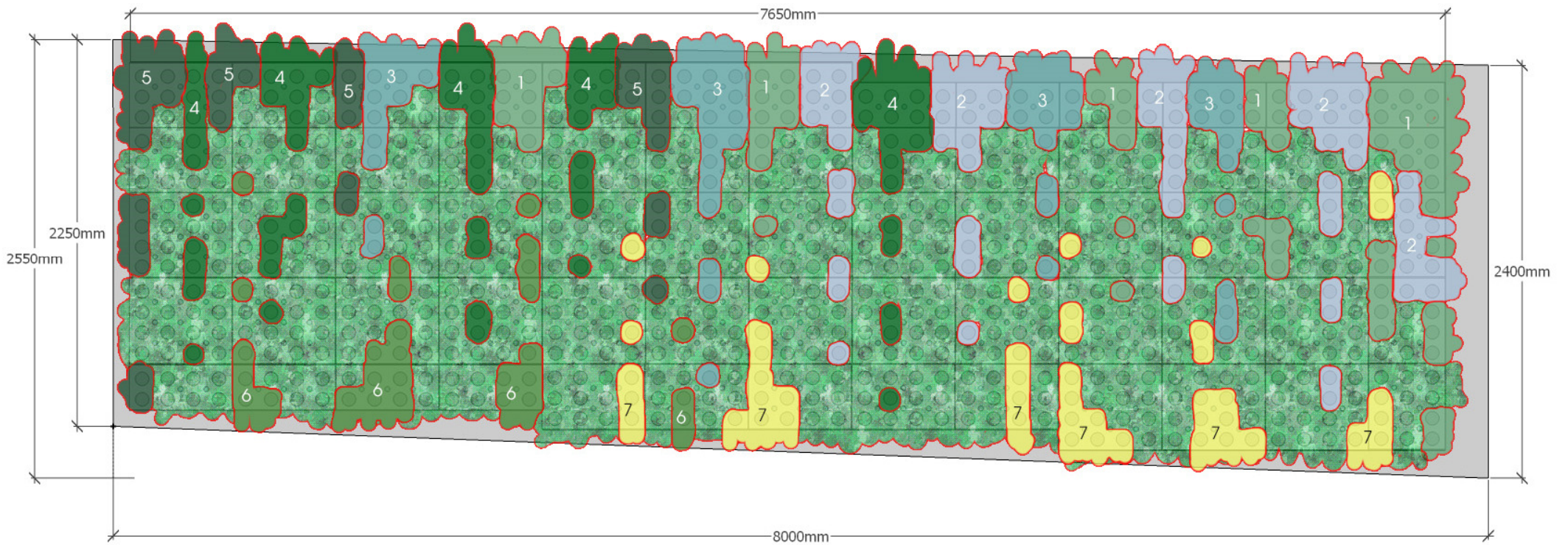
1L-1.5L plants should be used. Four cells of the geogrid should have their walls removed where the plants are to be placed (not in tyre track areas) to allow for greater rooting area. Adjacent cells should also be filled with the planting mix (similar to the roof mix) and all should be mulched with the drive gravel, which should be a 6-10mm shingle.

It is essential that a permeable sub-base material is used to prevent waterlogging. Plants will need careful watering during establishment.



Gravel Planting

- 14. *Leptinella squalida*
- 15. *Delosperma cooperi*
- 16. *Thymus Pink Chintz*
- 17. *Thymus Coccineus*

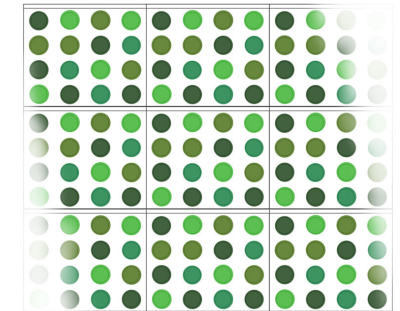
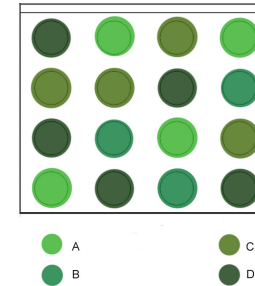


Living wall Planting Design

- 1 Geranium mac. Bevan's Variety
- 2 Lavandula Munstead
- 3 Euphorbia Humpty Dumpty
- 4 Liriope Big Blue
- 5 Carex fol. Irish Green
- 6 Polypodium vulgare
- 7 Acorus Ogon

Matrix Planting (all areas not numbered):

- A Ajuga reptans var.
- B Waldsteinia ternata
- C Euonymus kewensis
- D Erodium x variable Roseaum



Matrix planting: repeat planting of background plants between main groupings