

03 600-15510  
D-D

C

D

Level lbc pending detailed site survey

NOTES

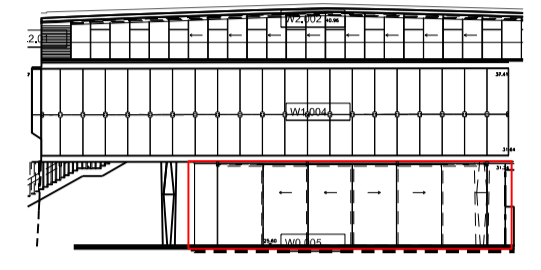
DO NOT SCALE FROM THIS DRAWING. CONTRACTOR TO CHECK ALL DIMENSIONS ON SITE. ANY DISCREPANCIES TO BE REPORTED TO THE ARCHITECT IMMEDIATELY.

THE SURVEY INFORMATION CONTAINED IN THIS DRAWING WAS PROVIDED BY PLOWMAN CRAVEN LTD AND BMCE LTD FOR FURTHER DETAIL PLEASE REQUEST AS APPROPRIATE. CONSTRUCTION DETAILS SUBJECT TO DISCHARGE OF PLANNING CONDITIONS

ASBESTOS AND ANY DANGEROUS OR HAZARDOUS SUBSTANCES: AS MAIN CONTRACT PRELIMINARIES - CLAUSES A34/370 & A34/371A.

THIS DRAWING HAS BEEN ISSUED PRIOR TO RECEIPT OF THE PRE-CONSTRUCTION INFORMATION REQUIRED BY THE DESIGN TEAM.

COPYRIGHT RICK MATHER ARCHITECTS LLP ©

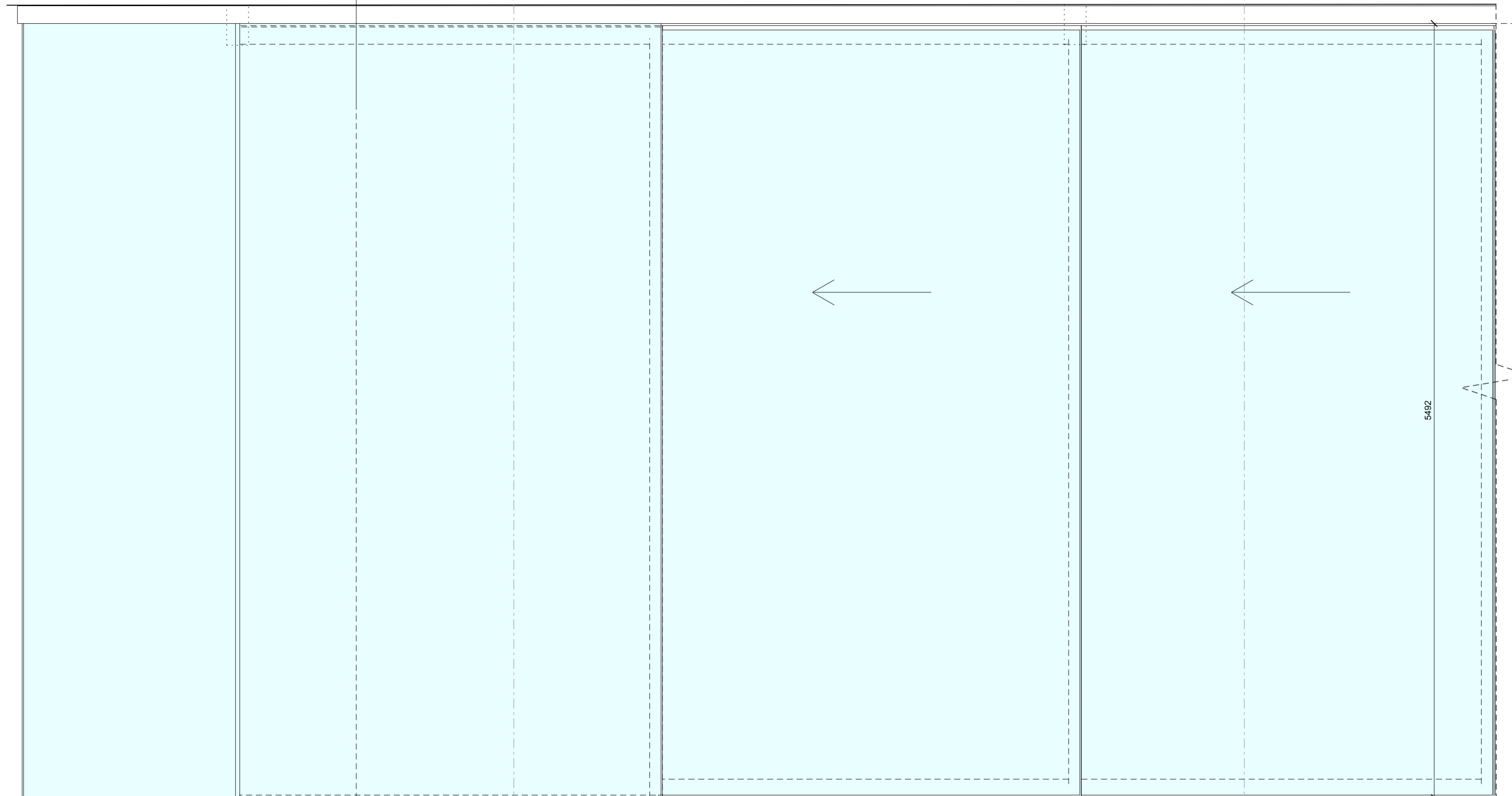


Location Elevation- CPL South

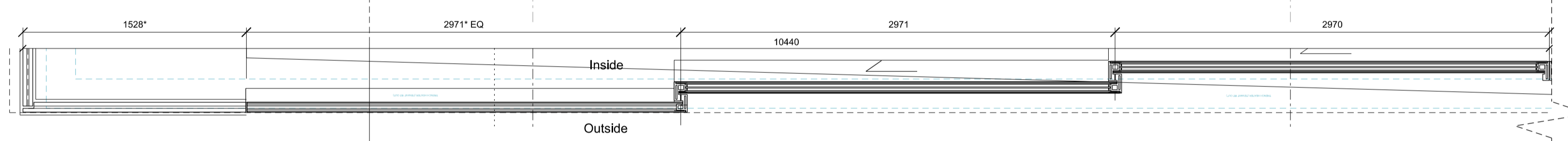
KEY

- \* ALL DIMENSIONS SHOWN ARE NOTIONAL PENDING CONFIRMATION FROM DETAILED SURVEY BY OTHERS.
- DENOTES EXISTING
- MOVEMENT JOINT

W0.005 - S. Elevation  
01 600-15510



W0.005 - Plan 01  
02 600-15510



D-D  
03 600-15510

E

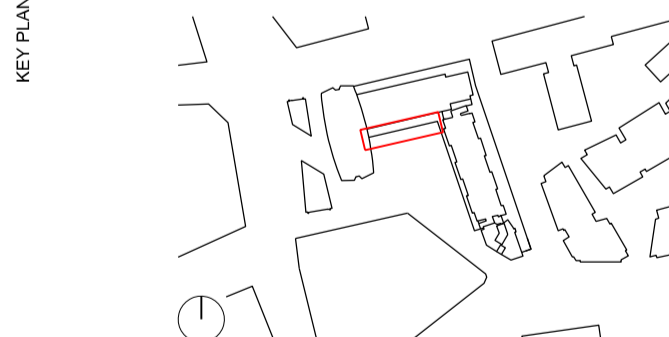
F

Level lbc pending detailed site survey

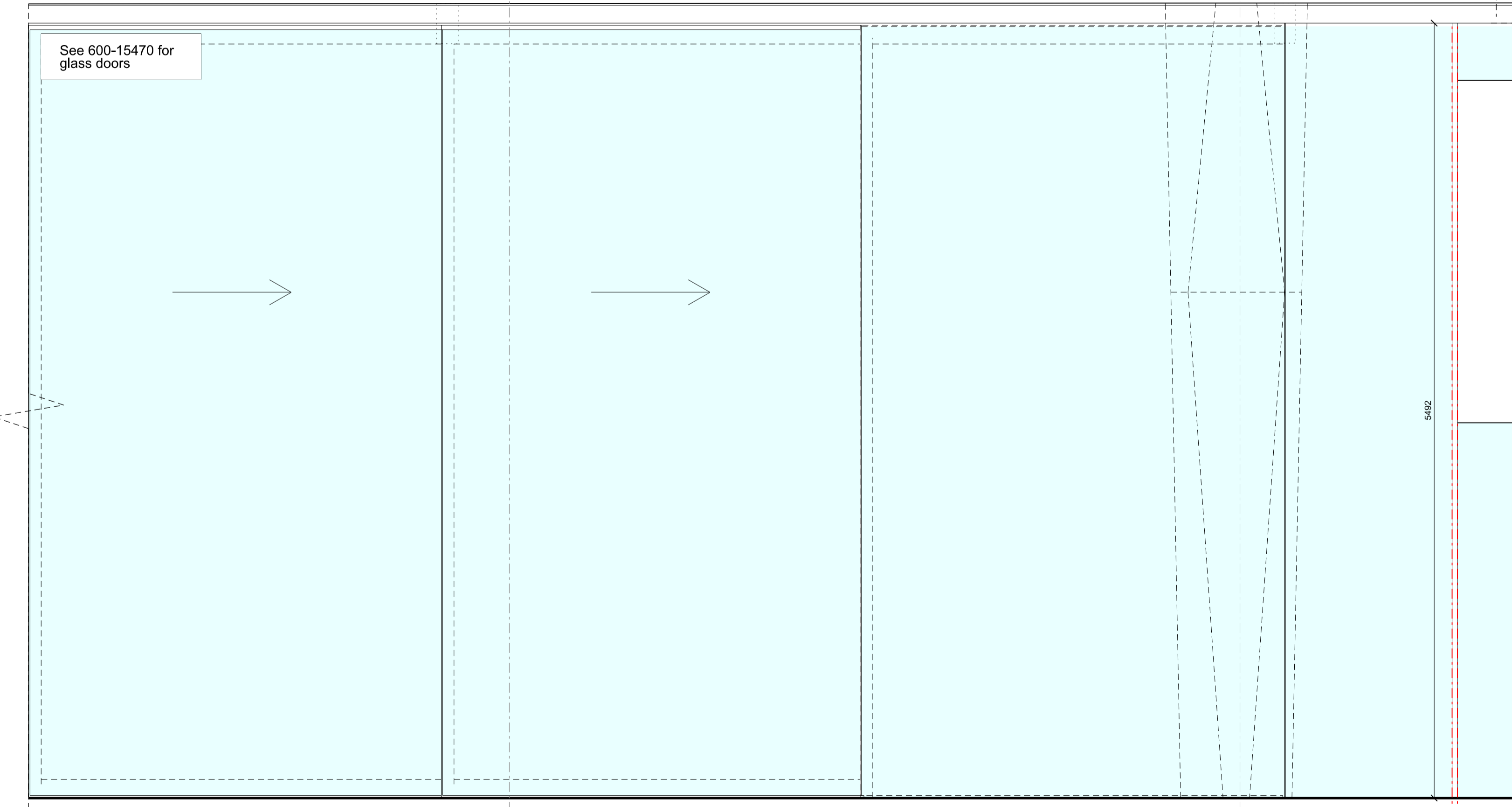
See 600-15470 for glass doors

REVISIONS

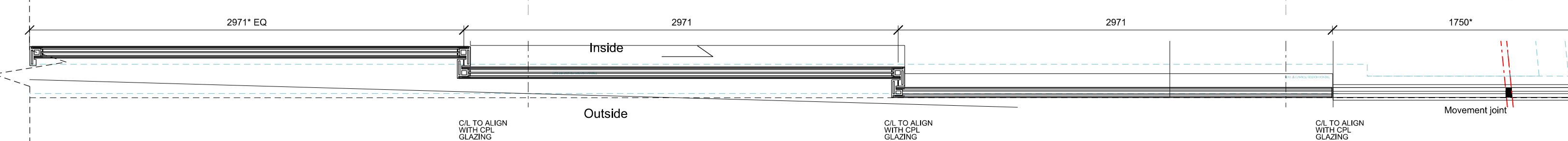
REV	DATE	DESCRIPTION
PL1	02.09.16	Condition discharge 3a



W0.005 - S. Elevation  
03 600-15510



W0.005 - Plan 02  
04 600-15510



# PLANNING

**RICK MATHER ARCHITECTS ©**

123 Camden High Street London NW1 7JR  
T: 020 7284 1727 F: 020 7287 7826  
info@rickmather.com www.rickmather.com

JOB  
**Centre Point**  
101-103 New Oxford Street  
London, WC1A 1DD

TITLE  
**Component Drawing**  
Glazing- R01 Motorised Sliding Doors  
W0.005

DRAWN	JOB #	DRG #	REV
LR	600	15510-CPL	PL1

CHECKED	SCALE@A1	SIZE	DATE	REV/DATE
MF	1:25	A1	AUG 13	02.09.16