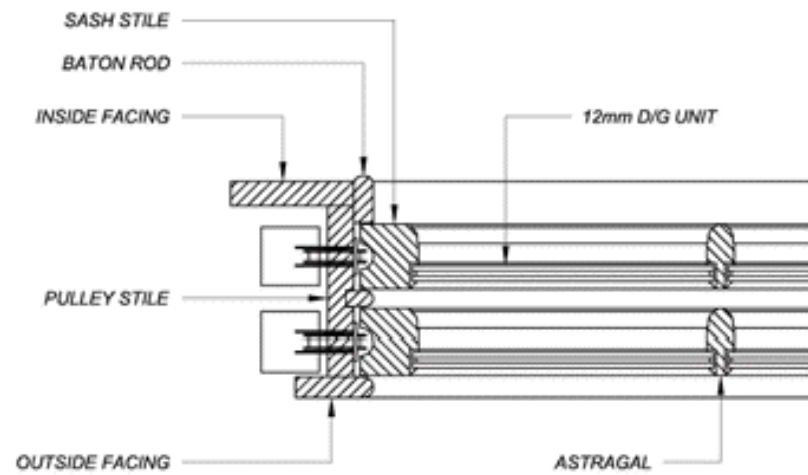
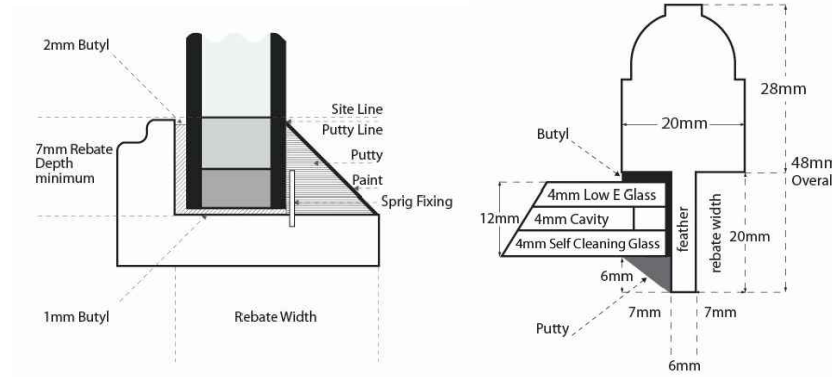
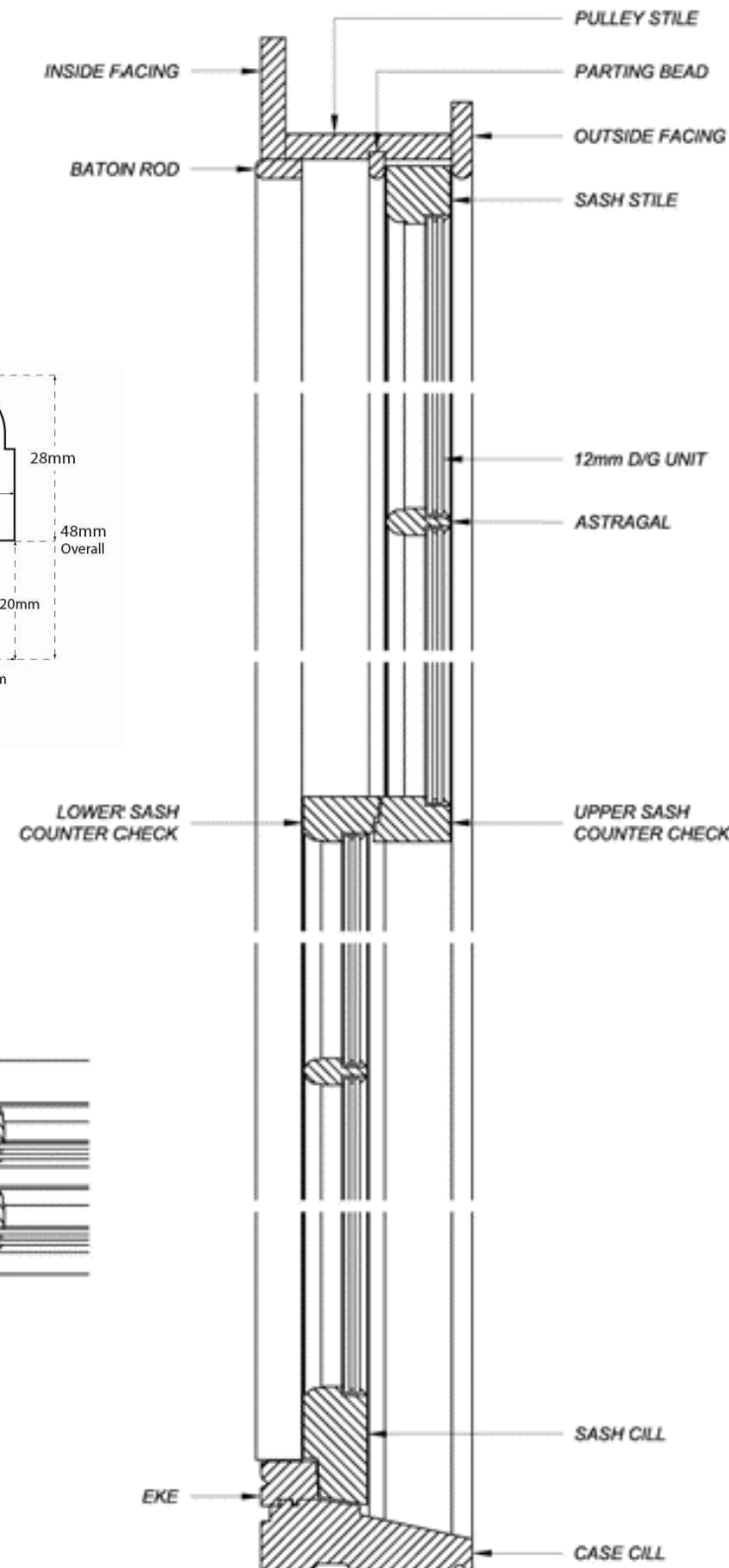


Elevation



Section B-B

Complies with Document L 1st October 2010.  
Suitable for new or replacement windows.



Section A-A

**NOTES**  
DO NOT SCALE FROM THIS DRAWING.  
All dimensions to be verified on site prior to setting out or fabrication.  
All structural, mechanical and electrical elements have been imported from the relevant engineers drawings and reference should be made to the individual engineers drawings for exact setting out, size and type of component.  
This drawing should be read in conjunction with all relevant consultants and specialist sub-contractor supply chain drawings and specifications.  
Discrepancies and / or ambiguities within this drawing, between it and information given elsewhere, must be reported immediately to this office for clarification before proceeding.  
All works to be carried out in accordance with the latest British Standards / Codes of Practice unless specifically directed otherwise in the specification.  
Responsibility for the reproduction of this drawing in paper form, or if issued in electronic format, lies with the recipient to check that all information has been replicated in full and is correct when compared to the original paper or electronic image.  
Graphical representations of equipment on this drawing have been co-ordinated, but are approximations only. Please refer to the Specifications and / or Details for actual sizes and or specific contractor construction information.

All rear elevation window to be replaced as shown.  
Front elevation windows to be re-furbished and redecorated with new secondary glazing installed.

REV.	DETAILS	DATE	CHKD	DRWN

STATUS  
**PLANNING**



**James Taylor Construction**

James Taylor Construction Limited, James Taylor House,  
St. Albans Road East, Hatfield, Hertfordshire AL10 0HE  
Telephone: 01707 244040 Facsimilie: 01707 244041

PROJECT DETAILS  
**64 Lincoln's Inn Field,  
London,**

DRAWING TITLE  
**New rear elevation windows**

SCALE 1:5 @ A3	DATE June'15
DRAWN JR	CHECKED SG
DRAWING NO. 3654-PL-350	