

THIS DRAWING IS COPYRIGHT OF dRMM LIMITED.
 THE ORIGINAL HARD COPY OF THIS DRAWING HAS BEEN EXECUTED TO SCALE AND IS
 DISSEMINATION MAY RESULT IN DISTORTION AND REDUCTION OF DRAWING CONTENT. dRMM
 LIMITED TAKES NO RESPONSIBILITY FOR MEASUREMENTS OR SCALE FROM DRAWINGS
 OTHER THAN THE ORIGINAL HARD COPY ISSUED BY dRMM AND NO RELIANCE
 SHOULD BE PLACED ON THE DIMENSIONS OR DIMENSIONS INDICATED IN THE
 DRAWING OR BY THE MEASUREMENTS OF THE BUILDING OR ANY OTHER DRAWING.
 THE ARCHITECT OR BY SITE MEASUREMENT. THE SIGNING OF ALL STRUCTURAL & SERVICE
 ELEMENTS MUST ALWAYS BE CHECKED AGAINST THE RELEVANT ENGINEERING DRAWINGS.
 ANY DISCREPANCY OR DISCREPANCIES BETWEEN DRAWING INFORMATION SHOULD BE
 BROUGHT TO THE ATTENTION OF THE CONTRACT ADMINISTRATION.
 dRMM REGISTER FLAGGED HAS ISSUES RELATING TO CONSTRUCTION DESIGN AND
 MANAGEMENT TO BE ADDRESSED DURING DESIGN DEVELOPMENT. TO BE READ IN
 CONJUNCTION WITH DESIGN RISK REGISTER AND RESIDENTIAL RISK REGISTER.
 ALL INTERNAL LAYOUTS ARE INDICATIVE ONLY.
 - UNUSUAL DESIGN SHOWN INDICATIVELY - REFER TO LANDSCAPE ARCHITECT DRAWINGS
 - THE BACKGROUND AND CONTEXT INCLUDING THE FRANCHIS CRICK INSTITUTE IS SHOWN FOR ILLUSTRATIVE
 PURPOSES ONLY. THE ARCHITECT HAS CONDUCTED BUT THE DRAWN FORM IS NOT BASED UPON SURVEY
 INFORMATION.
 - THESE SHOWN INDICATIVELY AND NOT SHOWN IN FRONT OF BUILDING FOR CLARITY

NOTES

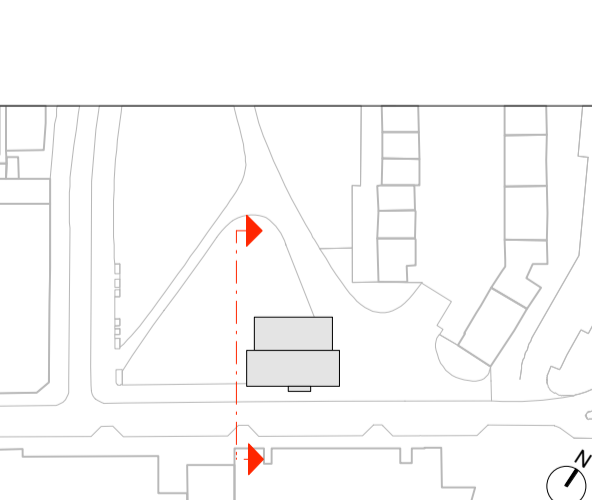
P04	PLANNING ISSUE			
03	STAGE 3 ISSUE			
P02	PLANNING ISSUE			
P01	FINAL PLANNING DRAFT SUBMISSION			

REVISION NOTES

REV	DESCRIPTION	BY	CHK	QA	DATE
P04	PLANNING ISSUE	VG	WH		16.05.16
03	STAGE 3 ISSUE	WH	JST		18.12.15
P02	PLANNING ISSUE	WH	PM		30.11.15
P01	FINAL PLANNING DRAFT SUBMISSION	WH	PM		03.11.15

REV	DESCRIPTION	BY	CHK	QA	DATE
U	CONCRETE COLUMNS WITH FINE SMOOTH VISUAL GRADE FINISH				
V	SLOPED METALLIC FLUSH LOUVER SYSTEM TO MATCH COLOUR OF G PERMITTING NATURAL VENTILATION OF PLANT AREA.				

SITE PLAN - KEY



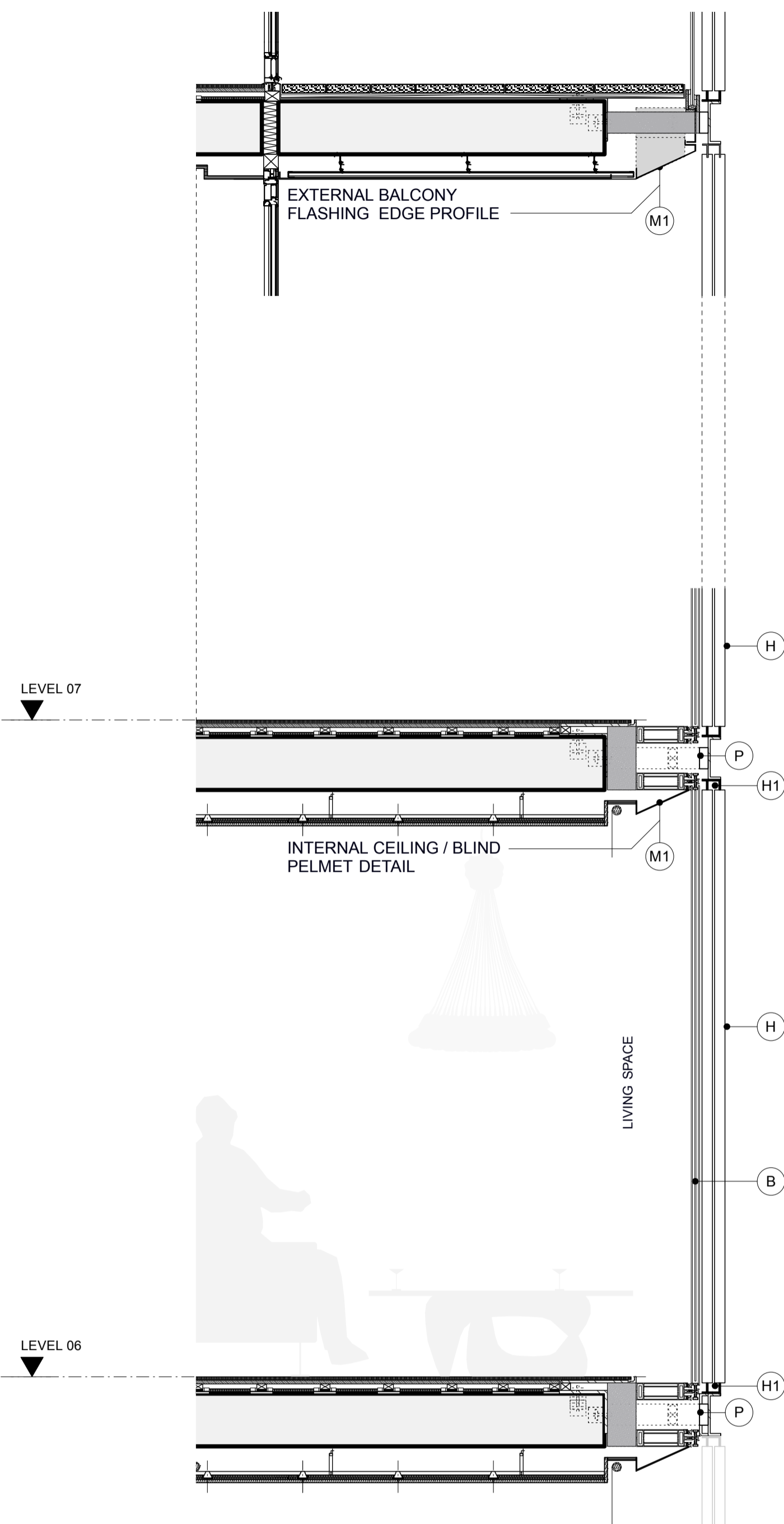
AUTHOR

dRMM ARCHITECTS		
TITLE		
TYPICAL EAST & WEST FACADE DETAIL		
PROJECT	SCALE	SIZE
BRILL PLACE	1:20	A1
DRAWING NO	1:40	A3
		REVISION
372-ELE-459		P04

FACADE MATERIALS

- A** UNITSISED FRAMELESS CURTAIN WALLING SYSTEM WITH CIRCA 200M DEEP GLASS RAINSCREEN FIXED TO OUTSIDE. RAL 9011 STEEL BLUE CERAMIC FRIT TO REAR (FACE 2) OF RAINSCREEN GLASS. GLASS REVEALS AROUND EDGES (TOP, SIDES AND SOFFITS) OF OVERALL RAINSCREEN ZONE TO MATCH
- B** UNITSISED FRAMELESS GLASS CURTAIN WALLING SYSTEM WITH EXTRA CLEAR GLASS.
- C** UNITSISED FRAMELESS GLASS CURTAIN WALLING SYSTEM WITH EXTRA CLEAR GLASS OVER OPAQUE ELEMENTS. SILVER CERAMIC FRIT TO FACE 4
- D** UNITSISED FRAMELESS CURTAIN WALLING SYSTEM WITH EXTRA CLEAR GLASS OVER BESPOKE SILVER PATTERNED CERAMIC FRIT TO FACE 2 AND SOLID SILVER CERAMIC FRIT TO FACE 4 (BOTH TO MATCH C). PATTERN ON FACE 2 TO REFLECT DNA DESIGN OF SOLAR SHADING SCREENS
- E** FRAMELESS OUTWARD OPENING TOP HUNG WINDOW WITH EXTRA CLEAR GLASS. TRANSOM AND FIXED GLAZED LOWER PANEL
- F** RECESSED INWARD OPENING SIDE/VERTICALLY HUNG WINDOW WITH EXTERNAL GLAZED JULIETTE BALUSTRADE AND SATIN ANODISED ALUMINIUM CAPPING. REVEALS FROM RAL 9011 (STEEL BLUE) GLASS TO MATCH FINISH OF A (BLUE/BLACK ANODISED UA150-2 FRAMES EXTERNALLY) HEAD REVEAL FORMED WITH BLUE/BLACK ANODISED LOUVRE (UA150-2)
- G** SILVER METAL STANDING SEAM ROOF INCLUDING HIDDEN GUTTERS (SIMILAR TO THE ROOF COLOUR OF FRANCIS CRICK INSTITUTE)
- H** SATIN ANODISED ALUMINIUM (MECHANICAL/ELECTRICAL MOTORISED) SLIDING SOLAR SHADING SCREENS WITH BESPOKE DNA SAMPLING PERFORATED PATTERN ON DUAL TRACK (UA NATURAL 100A)
- J** EXTERNAL VERTICALLY CANTILEVERED LOW IRON GLASS BALUSTRADE WITH SATIN ANODISED CAPPING TO BALCONIES (1200mm HIGH)
- K** INTERNAL LOW IRON GLASS JULIETTE BALUSTRADE WITH SILVER SATIN ANODISED CAPPING TO SLIDING WINDOWS
- L** FULL HEIGHT FRAMELESS CURTAIN WALLING SYSTEM WITH T-SECTION STEEL MULLION STICKS & CLEAR LOW IRON GLASS AND ANTI-REFLECTIVE COATING. INTEGRATED FRAMELESS DOORS TO GROUND FLOOR INCLUDING AUTOMATIC ACCESS CONTROLLED SLIDING DOOR TO RESIDENTS LOBBY WITH MATCHING GLASS. BESPOKE GLASS MANIFESTATIONS AS INDICATED. AREAS OF BACKFRIT TO MATCH C AS TAGGED L1
- M** BALCONY AND WINTERGARDEN SOFFITS: WHITE INTERLOCKED POWDERCOATED ALUMINIUM PANELS WITH HIDDEN FIXINGS
- N** GROUND FLOOR SOFFIT: SILVER BRIGHTENED ANODISED ALUMINIUM INTERLOCKING PANELS WITH HIDDEN FIXINGS - FORMING SCULPTED SOFFIT (UA NATURAL 100A)
- P** ANODISED EXTRUDED ALUMINIUM C-CHANNEL TO RECEIVE SHUTTER TRACKS WHERE APPLICABLE. VARIOUS FINISHES REQUIRED. TYPICALLY BRIGHTENED SILVER (UA NATURAL 100A). WHERE THE CHANNEL SITS BETWEEN TWO BLUE/BLACK RAINSCREEN ELEMENTS - COLOUR TO BE ANODISED UA 150-2 DARK BLUE. C-CHANNEL PROFILE ALSO VARIES. WHERE CHANNEL SITS BETWEEN TWO RAINSCREEN ELEMENTS - TO BE AN L-CHANNEL AS A CONTINUATION OF THE C-CHANNEL TOP FLANGE - REFER TO DETAILS
- Q** UNITSISED FULL HEIGHT EXTERNALLY FRAMELESS, INTERNAL SLIM FRAMED LOW-IRON GLAZED CURTAIN WALLING SYSTEM TO WINTERGARDENS WITH FIXED AND SLIDING PANELS. AREAS OF ROOF GLAZING TO MATCH AS INDICATED. GLASS RAINSCREEN TO SOFFIT, ROOF AND SIDES INCLUDING SOLID OPENING VENT TO MATCH A
- R** PROJECTING BAY WITH SINGLE PIECE OF EXTRA CLEAR GLASS TO FRONT WITH BLUE/BLACK BACKFRIT TO EDGE AS INDICATED. GLASS RAINSCREEN TO SOFFIT, ROOF AND SIDES INCLUDING SOLID OPENING VENT TO MATCH A
- S** FRAMELESS CURTAIN WALLING SYSTEM TO STAIRCASE, TRANSLUCENT PHOTOVOLTAIC PANELS LAMINATED INTO GLAZING ON SOUTHERN FACE OF STAIRCASE ENCLOSURE (INDICATED BY HORIZONTAL HATCH). AT GROUND FLOOR, GLASS TO BE LOW IRON TO MATCH L (NON HATCHED AREA)
- T** METAL STAIRCASE RAL 1016 SULPHUR YELLOW
- U** CONCRETE COLUMNS WITH FINE SMOOTH VISUAL GRADE FINISH
- V** SLOPED METALLIC FLUSH LOUVER SYSTEM TO MATCH COLOUR OF G PERMITTING NATURAL VENTILATION OF PLANT AREA.

2 TYPICAL EAST / WEST FACADE SECTION
SCALE 1:20



3 TYPICAL EAST / WEST FACADE SECTION
SCALE 1:20

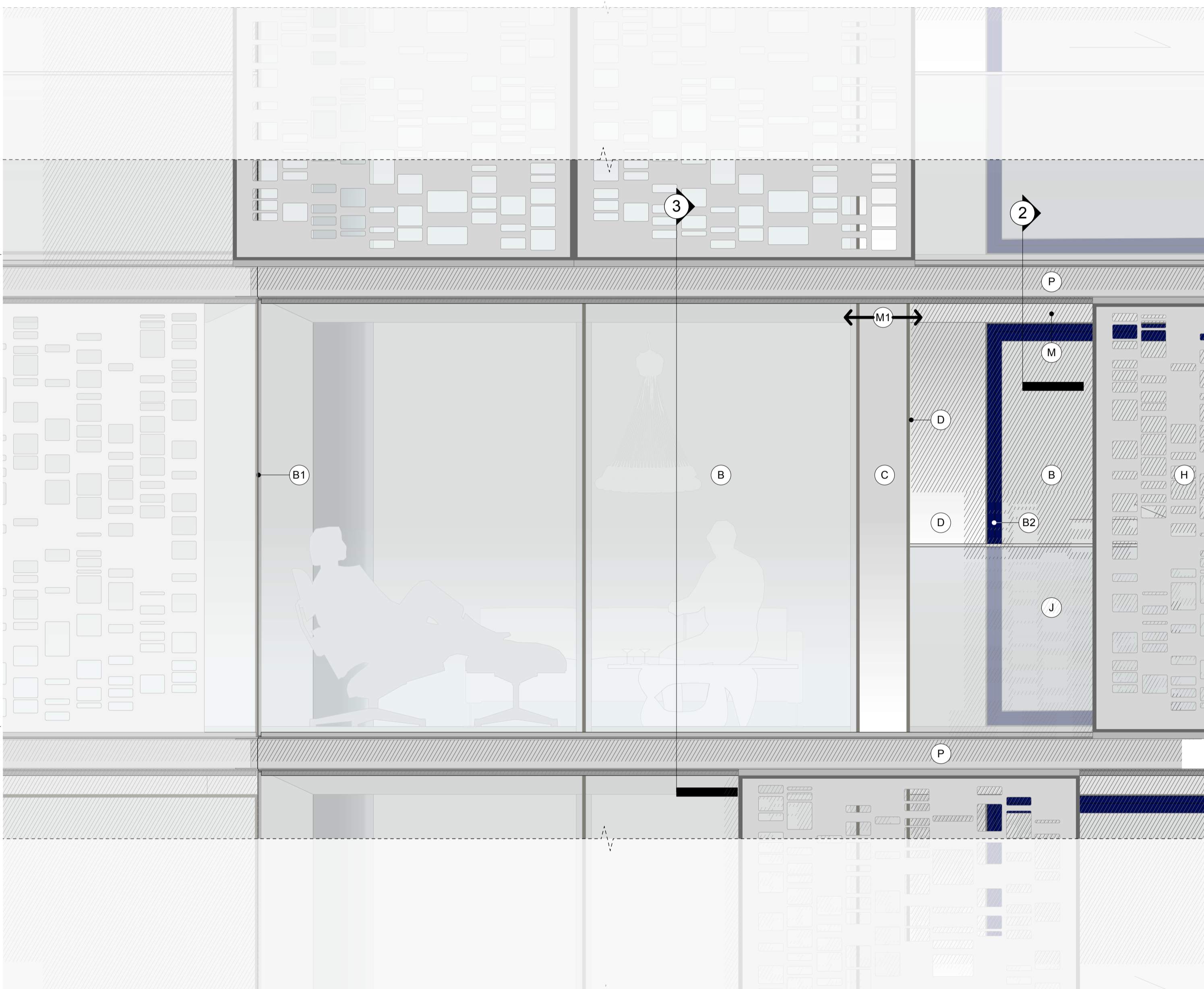
B UNITSISED FRAMELESS GLASS CURTAIN WALLING SYSTEM INCLUDING SLIDING DOOR SYSTEM WITH LEVEL THRESHOLD TO BALCONIES (BLUE/BLACK ANODISED UA150-2 FRAMES EXTERNALLY TO DOORS AND WINDOWS)

B1 GLASS TO GLASS JOINT - NO MULLION ON CORNER

B2 BLUE/BLACK ANODISED SLIDING DOOR FRAME UA150-2

M BALCONY AND WINTERGARDEN SOFFITS: WHITE INTERLOCKED POWDERCOATED ALUMINIUM PANELS WITH HIDDEN FIXINGS

M1 SOFFIT TO HAVE A CIRCA 25 DEGREE CHAMFERED EDGE. PROFILE OF CHAMFER SHOULD MATCH THE PROFILE OF THE INTERNAL CEILING PELMET DETAIL TO ENSURE A CONSISTENT EXTERNAL APPEARANCE



1 TYPICAL EAST / WEST FACADE ELEVATION
SCALE 1:20

1

3