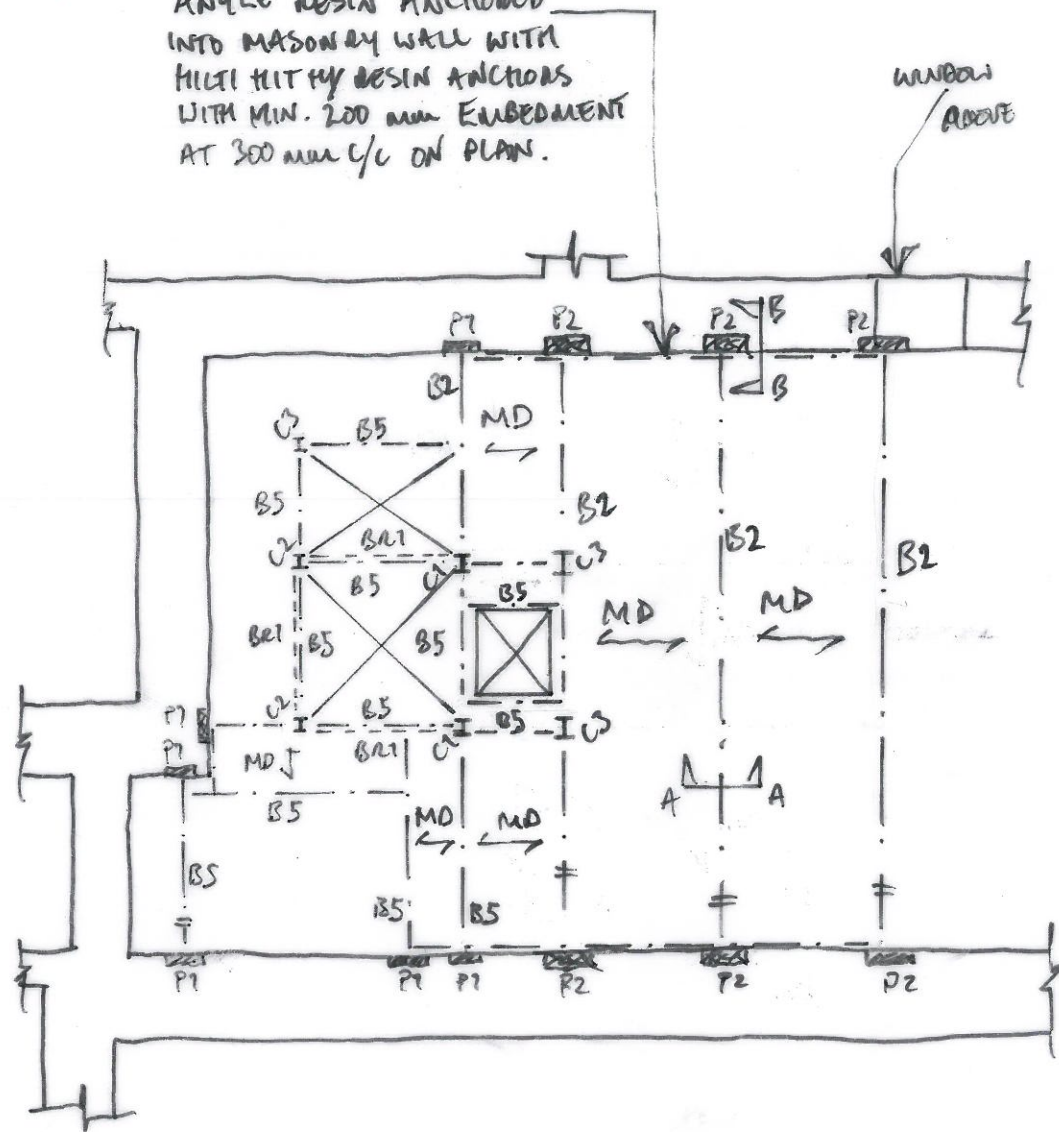


ANGLE RESIN ANCHORED INTO MASONRY WALL WITH HILTI HIT HY RESIN ANCHORS WITH MIN. 200 mm EMBEDMENT AT 300 mm C/C ON PLAN.

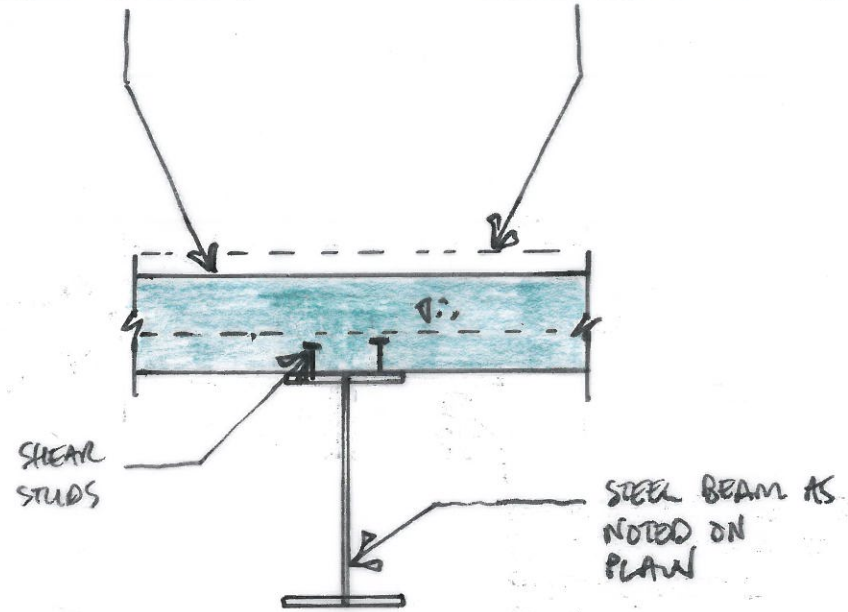


PLANT LEVEL PLAN

(1:100)

130 mm DEEP METAL DECKING

FINISHES TO ARCHITECT'S DETAILS

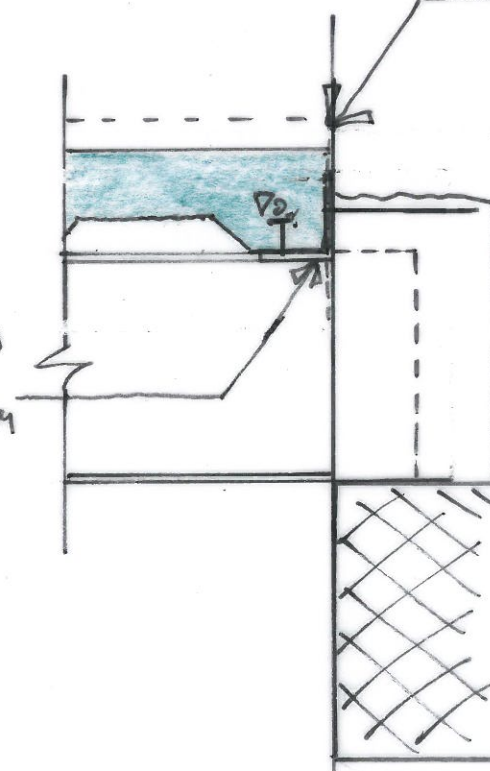


SECTION A-A

(1:10)

DPM TO ARCHITECT'S SPECIFICATIONS

ANGLE RESIN ANCHORED INTO MASONRY WALL



SECTION B-B

(1:10)

NOTE:

B2 = 305 x 165 x 400 UB

B5 = 203 x 102 x 23 UB

- 29.7.16 ISSUED FOR COMMENT LK

job
B.M. - WHITE WING
CLAWFORD STAIR

title
PLANT LEVEL
METAL DECKING SKETCH

drawn LK checked
date JULY '16 scale (original - A3) AS SHOWN

Alan Baxter

75 Cowcross Street London EC1M 6EL
tel 020 7250 1555
email aba@alanbaxter.co.uk

www.alanbaxter.co.uk

drg. no. 0689 / 484 / SK16 rev. -