

UTILITY LINETYPES

BT	Gas	ASR
CATV	Heating Pipes	HT
CCTV	HV Cables	HV
Communications	Multiple Services Route	MSR
Drainage	Drainage	DR
Drainage - Combined Water	Oxygen	OX
Drainage - Fuel Water	Street Lighting	SL
Drainage - Storm Water	Traffic Signal Loop	TSL
Empty Duct	Underground Cable	UC
Electric	Underground Pipeline	ULP
Fire Hydrant Main	Water	W
Fire Duct	High Voltage Cables	HV
Fuel		
Assumed Service Route - See Utility Survey Notes		ASR - XXX - ASR - XXX

UTILITY SURVEY INFORMATION

Area of Concern	Unable to Survey	UTS
Connected Survey Area	Unable to LI (open)	ULI
Depth to Top of Service (mm)	DTS-400	Unable to Trace
End of Trace	Bar	Unable to Trace (due to blockage)
Previous Survey Area	PREVIOUS	Unable to Trace Further

UTILITY SURVEY REFERENCE NOTES
 Standard Note - Refer to the corresponding number located at the base of the page
 General Note - Refer to the corresponding number located at the base of the page

TOPOGRAPHIC & UTILITY DETAILS

Barrier (symbol - sized)	Post (symbol)	+PO
Beltline (symbol)	Rain Water Pipe (symbol)	RWP
Bolard (symbol)	Road Sign (symbol)	+RS
Boxmanhole (symbol)	Roadside Eye (symbol)	ORE
British Telecoms IC	Sapling (symbol)	+SA
Building (incomplete detail)	Sign Post (symbol)	+SP
Cable into Ground (symbol)	Soak Away	SA
Cable TV Box (symbol)	Spot Light (symbol)	SL
CCTV Camera	Spot Height	SH
Cover Level in metres	Stop Cock (symbol)	SC
Direction of Flow (Drainage)	Stop Valve (symbol)	SV
Distribution Board (symbol)	Strip Valve (symbol)	STV
Earth Rod (symbol)	Telephone Pole (symbol)	TP
Electric Cabinet	Telephone Box (symbol)	TB
Electric Pole (symbol)	Traffic Bolard (symbol)	TB
Electric Sign (symbol)	Tree (dimensions in metres - e.g.)	T
Enlightenment	Drainage (1000 base)	DR
Feeder Pipe	Drainage (500 base)	DR
Fire Hydrant	Drainage (200 base)	DR
Flag Pole (symbol)	Drainage (100 base)	DR
Flat Roof Level in metres	Drainage (50 base)	DR
Flood Light (symbol)	Drainage (25 base)	DR
Gas Valve (symbol)	Drainage (12.5 base)	DR
Gate	Drainage (6.25 base)	DR
Ground Level in metres	Drainage (3.125 base)	DR
Gully	Drainage (1.5625 base)	DR
Inspection Cover	Drainage (0.78125 base)	DR
Invert Level in metres	Drainage (0.390625 base)	DR
Junction Box - BT	Drainage (0.1953125 base)	DR
Junction Box - Comm	Drainage (0.09765625 base)	DR
Junction Box - Elec	Drainage (0.048828125 base)	DR
Lamp Post (symbol - sized)	Drainage (0.0244140625 base)	DR
Light Bolard (symbol)	Drainage (0.01220703125 base)	DR
Light in ground (symbol)	Drainage (0.006103515625 base)	DR
Manhole	Drainage (0.0030517578125 base)	DR
Manhole Capped Port	Drainage (0.00152587890625 base)	DR
Parapet Level in metres	Drainage (0.000762939453125 base)	DR
Pipe Diameter in millimetres	Drainage (0.0003814697265625 base)	DR
Pipe into Ground (symbol)	Drainage (0.00019073486328125 base)	DR

GENERAL NOTES
 Utilities may continue outside of the survey area. Any paint marks outside of the area are for investigative purposes only and may not represent the full extent of the sub-surface utilities.
 Only sub-surface utility information is provided. Above ground utility information may be shown where it assists with positional referencing.

Where logic indicates a utility exists but which cannot be positively confirmed with the technology, an assumed route (ASR) is recorded. All Assumed Service Routes (ASR) have been highlighted with a background yellow colour for visual enhancement.
 SUMO does not procure statutory or private source utility information as part of its detection service nor does it record any such information in a utility survey unless otherwise stated. Statutory plans should be consulted to supplement this survey.

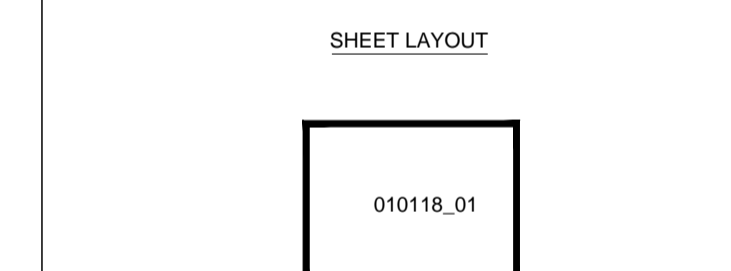
Vertical & Horizontal Position - Vertical position (depth) is indicative to the top of the utility feature and is recorded as DTS (depth to top of service) and should not be taken as exact. Where depth information from the technology is unclear, depth is not shown. Drains may have been detected using threading and the depth indicated could be between the top and the bottom of the drain. Horizontal position is indicative to the centre of the utility feature and should not be taken as exact.

Warranty - Biodegradable paints are used to mark-out the position of the utilities. Before long paint markings may become illegible depending on ground, weather and traffic conditions. No warranty is given in respect of the durability of the paint markings and that they are a complete representation of the sub-surface utilities therefore this drawing should be used as the primary reference for the survey results.

This drawing does not provide an absolute representation of the sub-surface. Utilities have been detected using non-invasive technologies only and the performance can be adversely affected by ground, weather and site conditions outside of SUMO's control therefore some utilities may be undetectable. While SUMO uses reasonable endeavours to detect all utilities it does not warrant that 100% detection will be achieved and that approximate depth penetration of the technologies will be greater than two metres.

Sewer and manhole details shown on this drawing have been obtained by observation and measurement from the surface and as such cannot be guaranteed. Where precise sewer details will be critical to the project design Sumo would recommend that entry into the chamber be undertaken using a specialist team, appropriately qualified for confined space entry. These teams can be supplied on request.

Irrespective of the information provided by a utility survey and statutory plans, excavation work should be undertaken with extreme caution and in accordance with HSE Guidelines - HSG47 Avoiding Danger from Underground Services



Rev	Notes	Drawn	Date
	Notes:		
	Survey is referenced to OS Grid and Level Datum.		

SUMO SERVICES Ltd
 # HAYWARD BUSINESS CENTRE
 NEW LANE
 HAYWARD
 HAMPSHIRE
 PO9 2NL
 TEL: 0845 456 1104
 FAX: 0845 456 0553
 www.sumoservices.com

Title: Utilities & Topographical Details
 Client: Galliford Try
 Project: Astor College, UCL, Charlotte Street, London.
 Date Completed: 26/07/2016 Post Code: W1T 4QB

Surveyed: NL, TD, JS	Scale: 1/200 (A1 Sheet)
Drawn: E.J.G.	
Checked: NL, TD, JS	
Dwg No: 010118_01	Job No: SOR010118
	Rev:

PRELIMINARY