

5. WASTE MANAGEMENT

A Phoenix 2-15W (with Elite 2 4x2 chassis) has been used to simulate a large refuse vehicle in all situations and locations. From Consultation with Camden it is required that; Collectors should not have to cart a 2 wheeled bins more than 10 metres and 4 wheeled bins 15 metres from the point of storage to the collection vehicle.

Waste from residents will be stored in the basement via 3 x 1100L Eurobins and removed via platform lift to ground level by the concierge. Refuse collectors to take from this point – circa 12m to refuse truck and within the guidelines set out above.

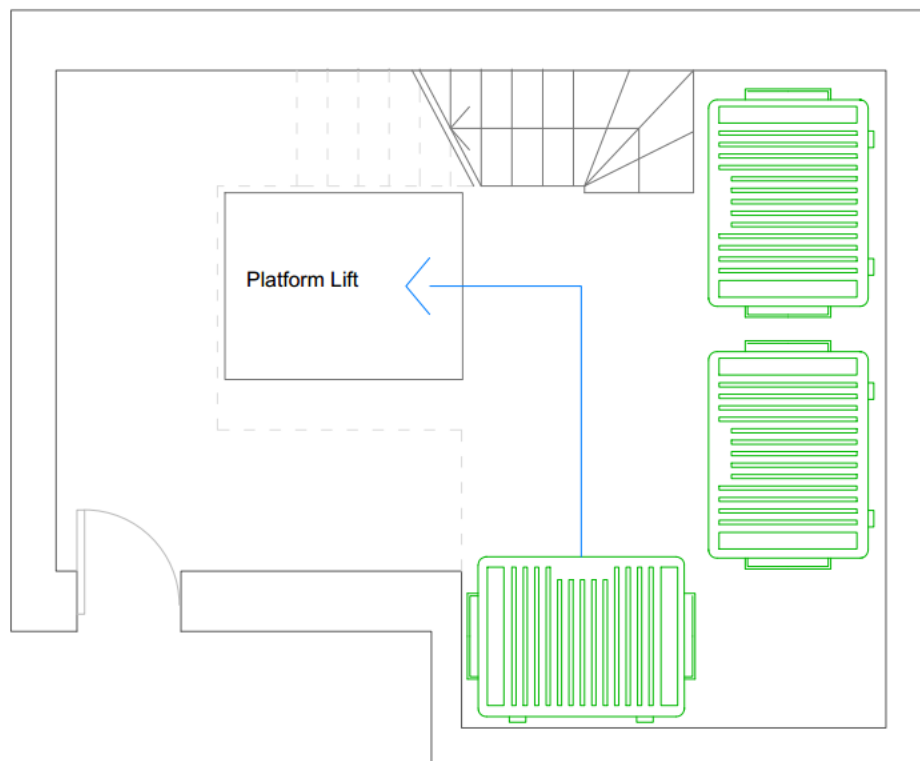


Figure 3: Basement Layout Showing Waste Storage Area