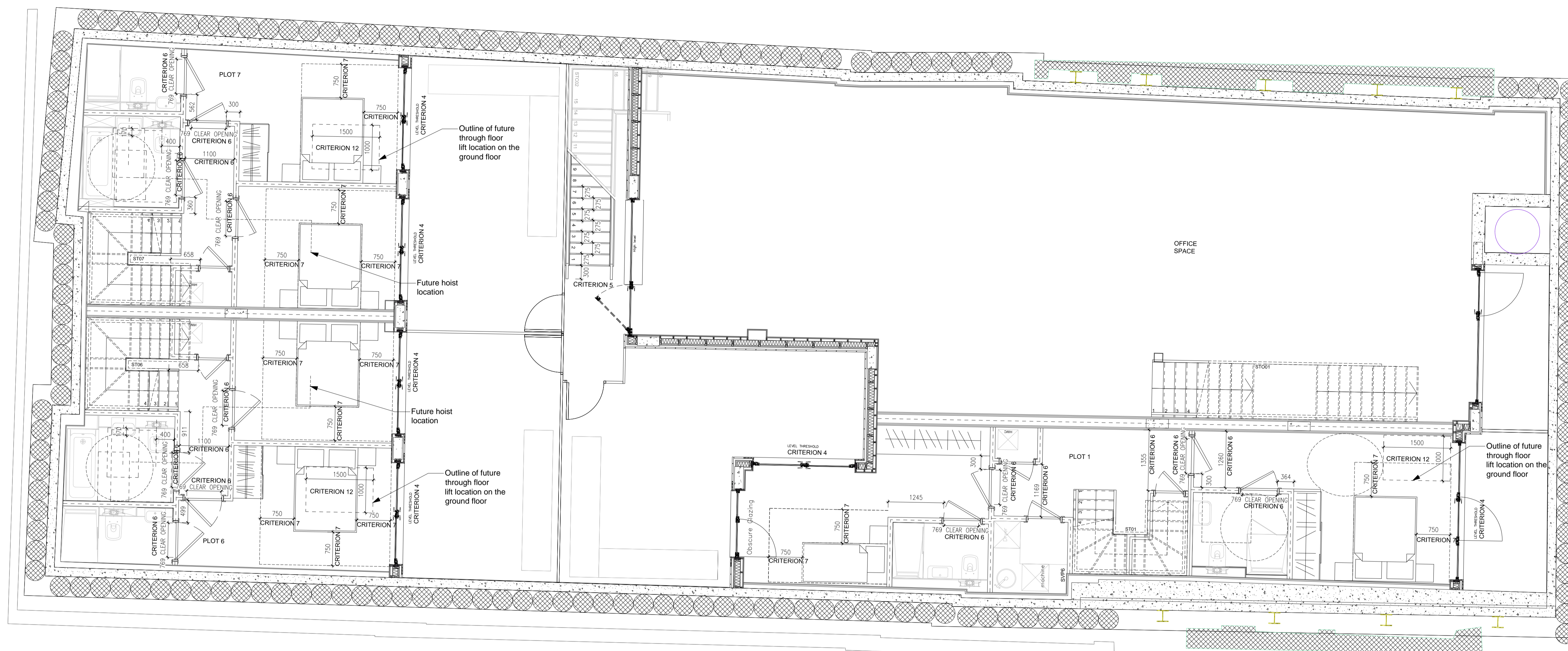


KEY PLAN



P1 31.08.16 Initial Issue

Revisions

**MGM**

CHARTERED ARCHITECTS

10 COLDBATH SQ LONDON EC1R 5HL

020 7713 8100 020 7837 0800

Project  
59-61, LEIGHTON ROAD  
LONDON  
NWS2QH

Title  
BASEMENT FLOOR PLAN  
(Life Time Homes)

Scale  
1:50@A1 Drawn by  
MGM/LF

Date  
AUGUST 2016 Checked  
VP

Drawing Number  
5381/P/01 LTH Revision  
P1

CRITERION 11:  
Walls in the bathrooms and WC compartments are capable of firm fixing and support for grab rails or similar adaptation.

CRITERION 12:  
All stairs are designed to enable seated lift installation.

PLANNING

DO NOT SCALE FROM THIS DRAWING. ALL DIMENSIONS ARE TO BE CHECKED AND VERIFIED ON SITE AND ALL DISCREPANCIES REPORTED TO MGM ASSOCIATES PRIOR TO ANY CONSTRUCTION WORK TAKING PLACE.  
THIS DRAWING IS THE PROPERTY AND COPYRIGHT OF MGM ASSOCIATES AND CAN NOT BE REPRODUCED WITHOUT PERMISSION.