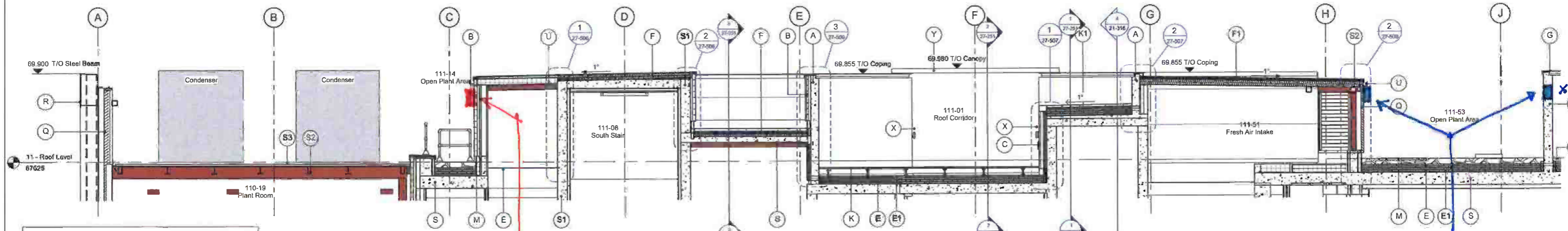
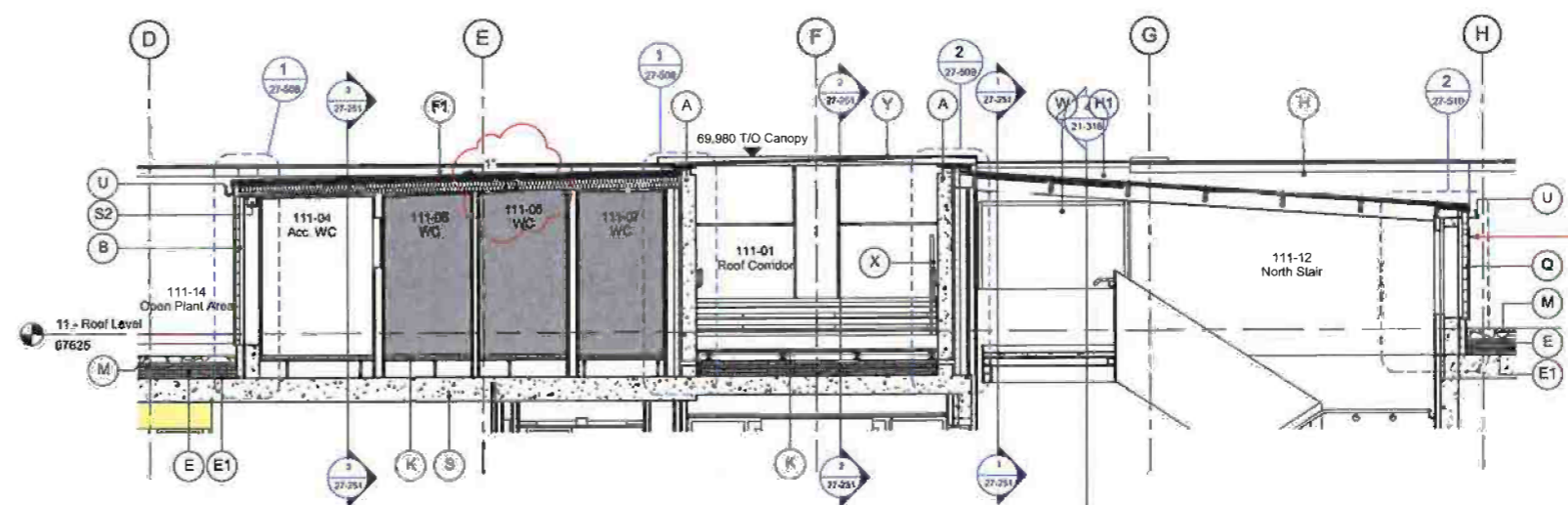


1 Roof Key Section 1
1:50



2 Roof Key Section 2
1:50



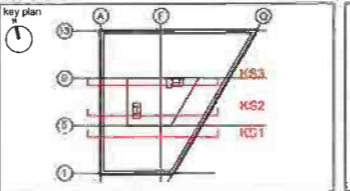
3 Roof Key Section 3
1:50

- (A) EXPOSED CONCRETE - Cast In-Situ Form-Faced & Board Marked Concrete (with water repellent sealer) to SE specification C20-44D
- (B) METAL COMPOSITE INSULATED PANEL (Refer to NBS H43) - 60mm Kingspan Meta-Rib Profiled KS600-1000 MR (or similar approved) Composite Cladding Panel horizontally laid & concealed fixings to Concrete Structure or Steel Framing System (SFS) to achieve an overall wall U-Value of 0.25W/m²K
- (B1) EXTERNAL RENDER BOARD - 10mm Small Buckled (or similar approved) Smoothing Board with Weber Rend MT-Green thick meshcloth reinforced coat LAC finished with synthetic textured plaster (or similar approved). See NBS Spec M20-210
- (B2) EXTERNAL WALL INSULATION SYSTEM (Refer to NBS M21210) - Weather shield MM (or similar approved) Rigid approved EPS system mechanically fixed to substrate. Render 6mm meshcloth, render LAC with textured finish (PM218)
- (C) CEMENT MARBLE CLADDING (Refer to NBS H51) - 50mm Cement Marble Cladding Panel
- (D) CURTAIN WALL SYSTEM (Refer to NBS I11701) - Unfixed Curtain Walling System with Insulated Glass Units by floor
- (E) INVERTED FLAT ROOF SYSTEM (Refer to NBS Z21) - Kingspan Aquadome (or similar approved) Non-Woven Polyethylene Membrane Protection Sheet laid onto 200mm (100mm x2) Kingspan Sluzogone N200R (or similar approved) Rigid Extruded Polystyrene (EPS) Insulation Non-Woven Polyester Fibre Insulating Membrane laid onto Hot Mel Roofing System to achieve an overall roof U-Value of 0.18W/m²K
- (E1) HOT MEL ROOFING SYSTEM (Refer to NBS Z21) - 3mm Green Coils x2 IZO Parnatex (or similar approved) Hot Applied Rubberised Bitumen modified with Polymer Resin & a Spun-Bound Polyester Reinforcement Fabric Sheet embedded between coats
- (F) SINGLE PLY WATERPROOFING (Refer to NBS J42115) - Reinforced Single-Ply Membrane adhered to 150mm Kingspan Thermoplastic LSPCFM (or similar approved) Rigid Thermal Insulation onto Vapor Control Layer (VCL) laid on tapered screed to provide a fall of 1:40-1:50 gradient (1° degree) to achieve an overall roof U-Value of 0.18W/m²K
- (F1) SINGLE PLY WATERPROOFING (Refer to NBS J42115) - Reinforced Single-Ply Membrane adhered to 40mm Kingspan Thermoplastic LSPCFM (or similar approved) Rigid Thermal Insulation on 18mm Plywood fixed to 145mm deep x 600mm cover width Structural Liner Tray with 140mm Celotex XR4000 (or similar approved) laid onto trays to achieve an overall roof U-Value of 0.18W/m²K
- (G) COPING SYSTEM (Refer to NBS H21445) - 3mm Anodised Aluminium or Stainless Steel Parapet Coping with EPDM Sealer & concealed Fixing Strip (ColourRAL7021 30% gloss)
- (H) ROOFLIGHT SYSTEM (Refer to NBS L10) - Thermally Broken PVC Aluminium Rooflight System comprising of 6 heat seal sealed toughened glass Outer Pane. Cavity & a laminated heat strengthened inner Pane. Insulated Aluminium cover Fixing. Part of Rooflight System.
- (J) BALUSTRADE SYSTEM (Refer to NBS L20110) - 1100mm high (9.5M loading) Low-Iron Laminated Safety Glass Balustrade with 2.5mm Wirerod Central Finished Steel Capping Handrail System to terraces & balconies by Sub-contracting (Bach) specification
- (K) CEMENT MARBLE PAVING (Refer to NBS Q25) - 1125x1240mm (50mm thick) Exposed Aggregate Honed Precast Cement Marble Paving Slabs supported by Buzo (or similar approved) Adjustable Pedestals for Raised Access Floor
- (K1) CEMENT MARBLE PAVING (Refer to NBS M41) - 1125x1240mm (50mm thick) Exposed Aggregate Honed Precast Cement Marble Tiling supported by Hammer (or similar approved) Uni-Ring Fixing Support with slope corrector and string
- (L) PAVING SYSTEM (Refer to NBS M401171) - 500x500mm (50mm thick) Paving Slabs (material TBC) supported by Hammer Modulock (or similar approved) Adjustable Pedestal Support for Raised External Access Floor with open jointing for drainage
- (M) CONCRETE PAVING (Refer to M40) - 600x600mm (50mm thick) Concrete Paving Slabs supported by Buzo (or similar approved) Adjustable Pedestals or Raised External Access Floor
- (N) HARDWOOD TIMBER DECKING SYSTEM - Decking Boards, fixed to joists & supported by a pedestal system.
- (P) CEMENT MARBLE TILING (Refer to NBS M41) - 1125x1240mm (50mm thick) Exposed Aggregate Honed Precast Cement Marble Tiling onto 10mm Tile Bedding with 75mm Screed & 185mm Void Frame
- (Q) Louvre System for Ventilation to MEP specification
- (R) WEATHERING STEEL - Structure Grade & External Weathering Steelwork to SE specification
- (S) STRUCTURAL SLAB - Post-Tensioned (PT) Concrete Slab to SE specification
- (S1) Reinforced Concrete (RC) Wall to SE specification
- (S2) Structural Steel Framing to SE specification
- (S3) Metal Deck to SE specification
- (T) Recessed Luminaires
- (U) 100mm wide x 100mm deep PPC Aluminium Gutter with 63mm diameter Rainwater Outlets & Downpipes (to PH specification)
- (V) Flush Metal Panel Doors - Refer to Door Schedule
- (W) Aluminium Window - Refer to Window Schedule
- (X) Painted Steel Handrail
- (Y) METAL CANOPY - Folded metal canopy to specialist sub-contractor's specification. Formed from mild steel with welded joints to provide single joints. Finish with 2 part epoxy paint finish (colour TBC)
- (Z) Landscaping Build-up by Wileyby onto an Intertex Flat Roof UGL Unit Waterproofing System. See structural drawings for levels and details

DO NOT SCALE FROM THIS DRAWING
ALL DIMENSIONS TO BE CHECKED ON SITE

NOTES:
1. This drawing shows design intent only & is subject to detailed design from approvals.
2. If any dimensions only are to be taken from this drawing, all dimensions must be taken from the drawing & are responsible for taking & checking all dimensions relating to this drawing. (BIM) Design to be checked at any stage between drawings & site conditions.
3. All vertical dimensions to be taken from FFL, please note that all manufacturing schedules are to take this into account.
4. All dimensions are to be in millimeters unless noted otherwise.
5. All levels are to be in meters unless noted otherwise.
6. All levels to be in meters unless noted otherwise.
7. To be read in conjunction with:
8. BAMO DTD drawings for structural frame, openings, supports (reinforcement) etc.
9. BAMO MEP drawings for services layouts, routes
10. RIBA drawings for L&B details

REV	BY	DATE	CHKD	COMMENTS
005	BC	08/02/16	JC	Design development & updated CMT comments
004	VH	25.11.15	KD	Sections updated to suit EPA comments 01.09.15 Construction Issue
003	VH	12.08.15	KD	Issued For Information Sections updated
002	NW	18.05.15	KD	Updated to CMT Comments
001	VH	19.02.15	KD	For Pricing
000	VH	27.02.15	KD	For Pricing



KINGS CROSS ZONE B
4 PANCRAS SQUARE

Roof Key Sections (Sheet 1)

CONSTRUCTION			
PROJECT	KXC-B5-001	DATE	19/05/15
DESIGNER	VH	CHECKER	KD
DRAWING NO.	BD4359	SCALE	1:50 @ A1
NO.	A	REV.	27-250
		NO.	005