

NOTE: ALL NEW STEEL BEAMS
TO BE BEAM REFERENCE B5,
UNLESS NOTED OTHERWISE.

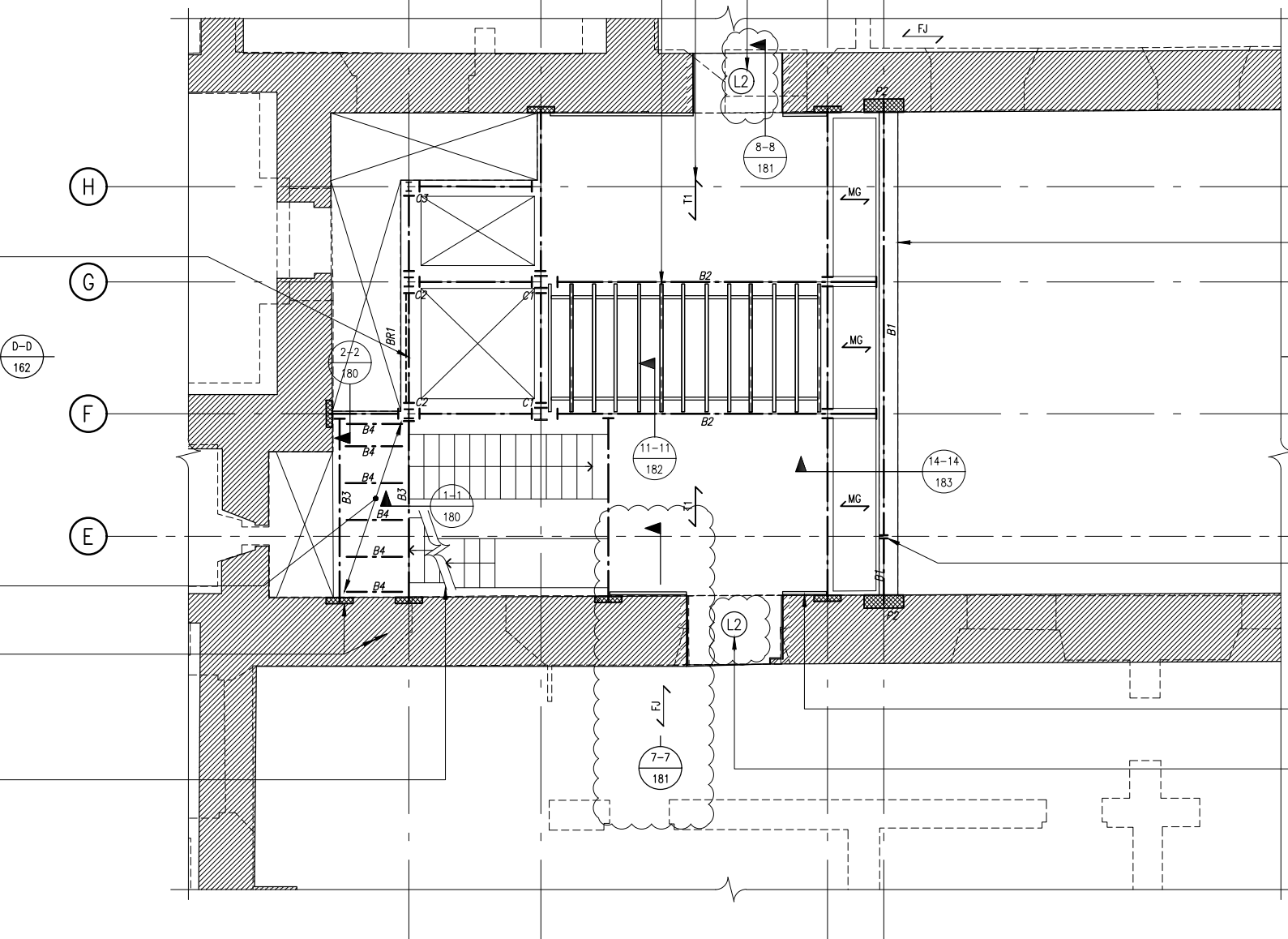
NOTE: ALL NEW MASS
CONCRETE PADSTONES TO BE
PADSTONE REFERENCE P1,
UNLESS NOTED OTHERWISE.

NEW JOISTED TIMBER FLOOR WITH 2 No.
LAYERS 15mm PLY SCREWED ON TOP.

TYPICAL TIMBER FLOOR BAY:
SHOWING JOISTS, BLOCKING AND STRAPS.

NEW OPENING TO BE FORMED WITH
PRECAST CONCRETE LINTELS OVER.

1 2 3 4



NEW STEEL LIFT SHAFT TO BE
BRACED ON 1 No. SIDE AS SHOWN.

PROPRIETARY PRE-ASSEMBLED
FACADE SYSTEM TO FORM
ELEVATION TO ARCHITECT'S
SPECIFICATIONS.

STEEL PLATE 6mm THICK.

CONCRETE PADSTONES.

PREFABRICATED STEEL STAIR TO
BE DESIGNED BY OTHERS.

SPLICE TO NEW STEEL BEAM
LOCATION TO BE AGREED.

TIMBER WALL PLATE.

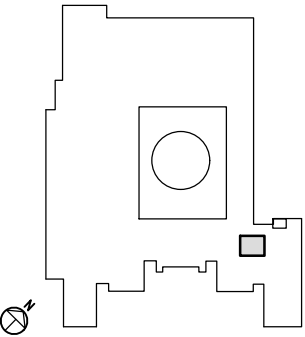
NEW OPENING TO BE FORMED WITH
PRECAST CONCRETE LINTELS OVER.

notes

1. THIS DRAWING IS TO BE READ IN CONJUNCTION
WITH ALL RELEVANT ARCHITECTS & ENGINEERS
DRAWINGS & THE SPECIFICATION.
2. DO NOT SCALE FROM THIS DRAWING.
3. FOR GENERAL NOTES REFER TO DRAWING No.
0699/454/099.

ISSUED FOR
INFORMATION

B	29.07.16	MINOR AMENDMENTS, ISSUED FOR INFORMATION.	FN
A	22.07.16	ISSUED FOR INFORMATION UPDATED - INFORMATION ADDED	FN
-	01.07.16	ISSUED FOR INFORMATION	AS



job

**BRITISH MUSEUM
WHITE WING -
CRAWFORD STAIR**

title

**PROPOSED STRUCTURE:
LEVEL 6 PLAN**

drawn

DF

checked

LK

date

JUNE 2016

scale (original - A1)

1:50

Alan Baxter

75 Cowcross Street London EC1M 6EL
tel 020 7250 1555
email aba@alanbaxter.co.uk

www.alanbaxter.co.uk

drg. no.

0699/454/168

rev.

B