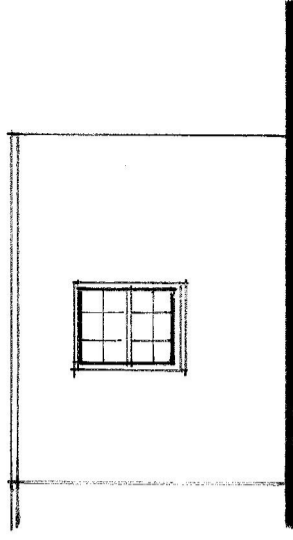
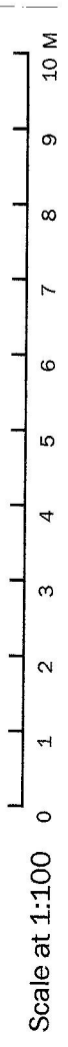



NORTH ELEVATION



PART WEST ELEVATION



 <b>Nationcare</b> <small>WINDOWS &amp; PROPERTY SERVICES</small>	
<small>Unit 11 Barwell Business Park • Chessington • Surrey • KT9 2NY • Tel: 0208 397 3700</small>	
<b>Project:</b> Renewal of existing timber single glazed windows and doors with matching double glazed timber units at:- Goldsmiths House, Park Village East, NW1 3SX	
<b>Client:</b> Viridian Housing	
<b>Title:</b> <b>PROPOSED ELEVATION (Sheet 8 of 11)</b>	
<b>Drawn:</b> RAB	<b>Scale:</b> 1:100 at A3
<b>Dir. No. 16 / 572 / 8</b>	