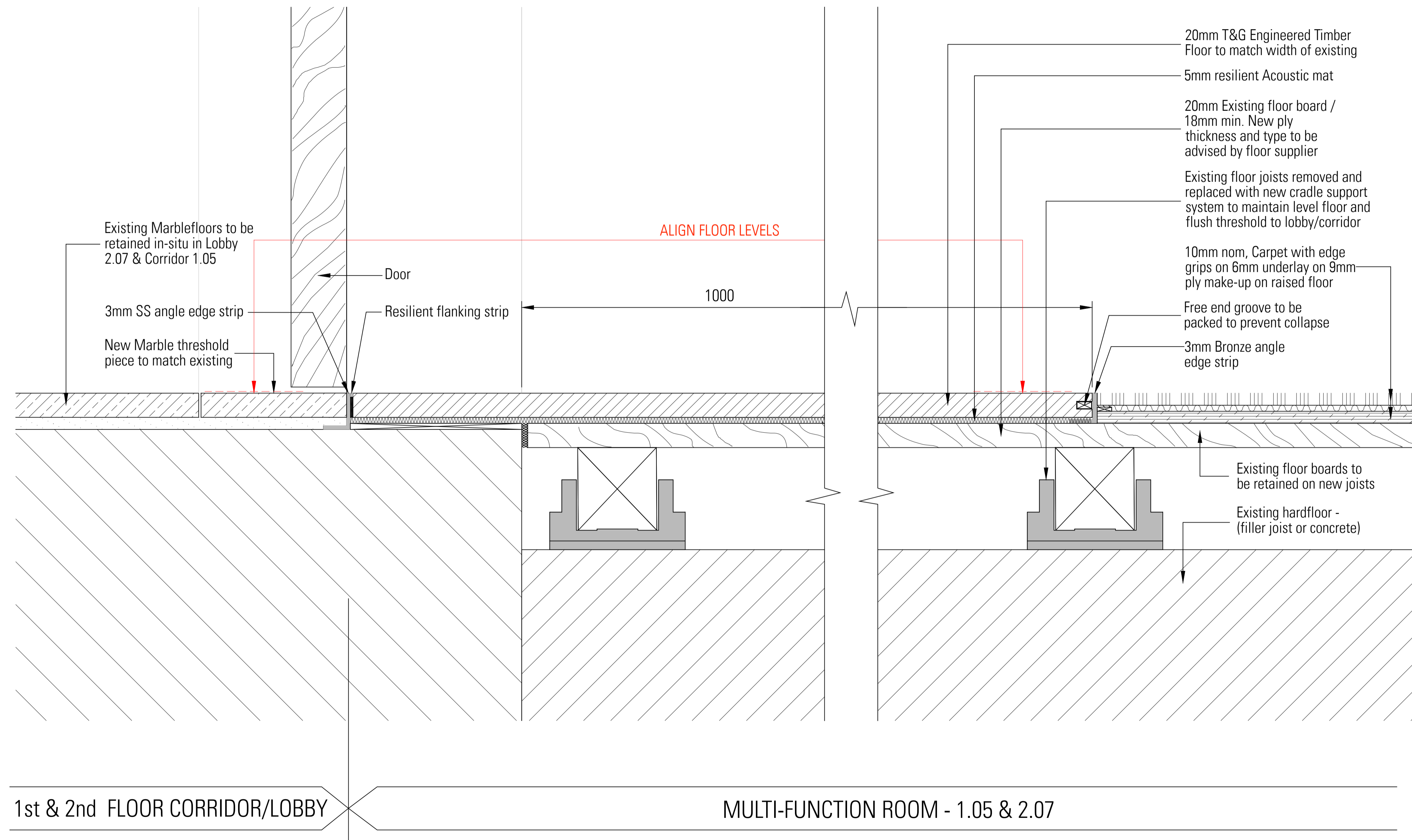


BATHROOM NOTES

These drawings are for a bespoke stand-alone en-suite bathroom. Refer to the following drawings for set out & co-ordination:
 586-GA Series (General Arrangement)
 586-PA Series (Partitions)
 586-BW Series (Builders Work)
 586-SP Series (NSI Specification)
 586-sE FFE Schedule

Refer to Sanitaryware Schedule - sT Series
 Refer to Interior Designer's Schedule



P1 Issued for LBC 22/08/2016

Revisions

CONSTRUCTION

Gato House
 1 St John's Square
 London EC1M 4DH
 T +44 20 7490 7674
 studio@harperdownie.com
 www.harperdownie.com

Client	Havza		
Project	2-6 Southampton Row		
Drawing Title	Filler Joist Floor First & Second Floor Corridor / Multi-function Rooms 1.05 & 2.07 Threshold Detail		
Status	LBC	Drawn	Checked AI
Scale	1:2 @ A1	Date	Aug 2016
Drwg. No.	586 df054	Revision	P1