
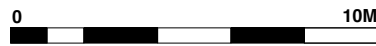
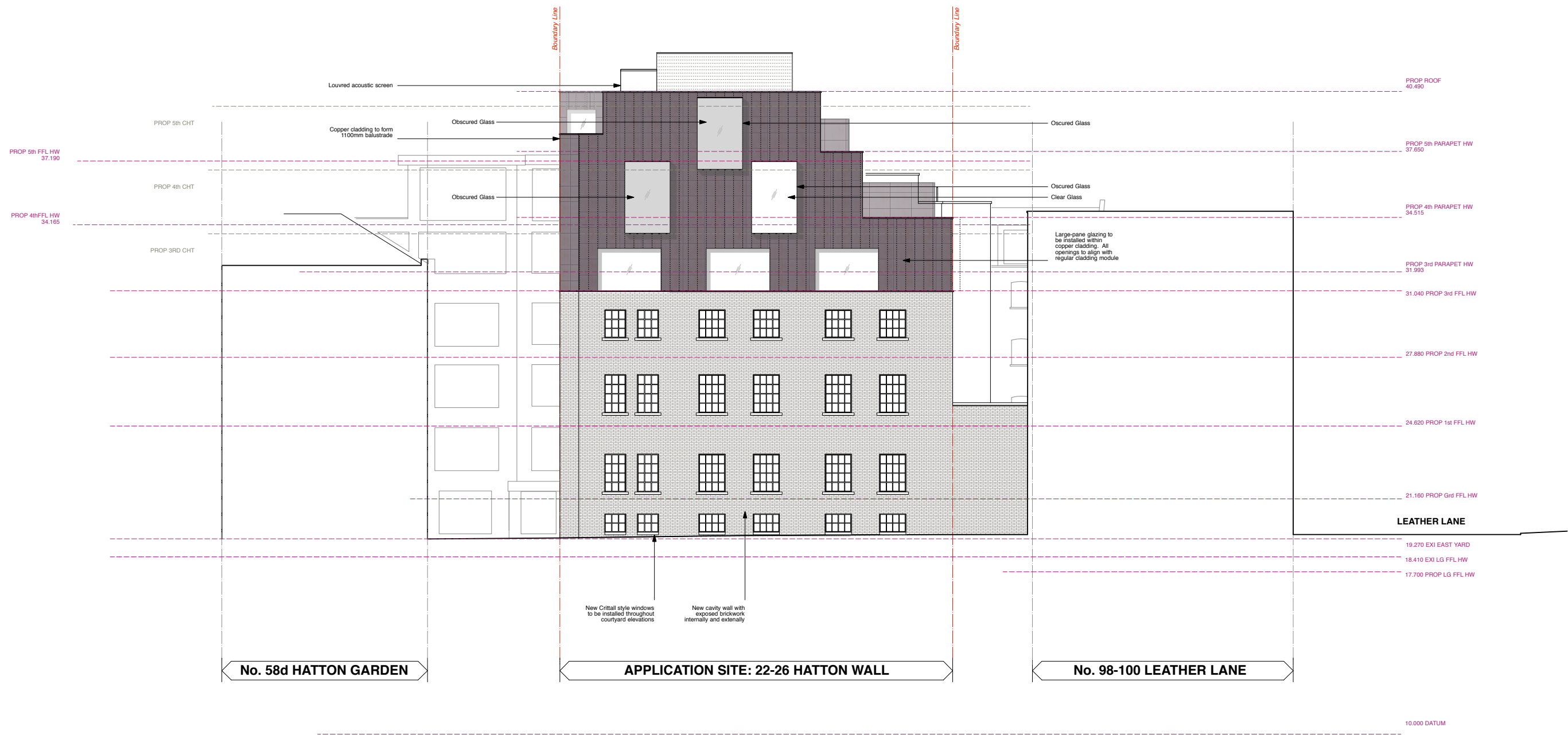

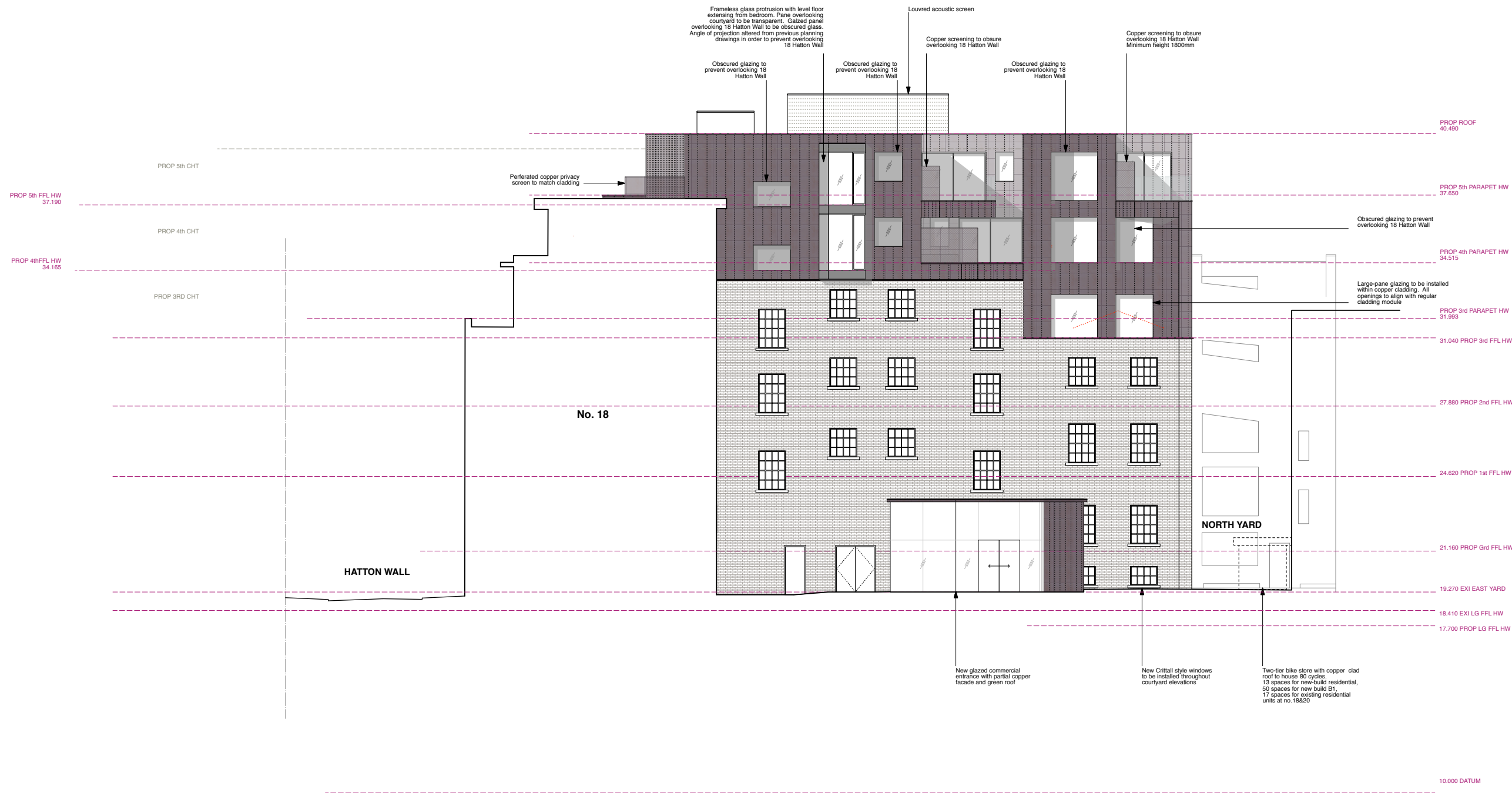




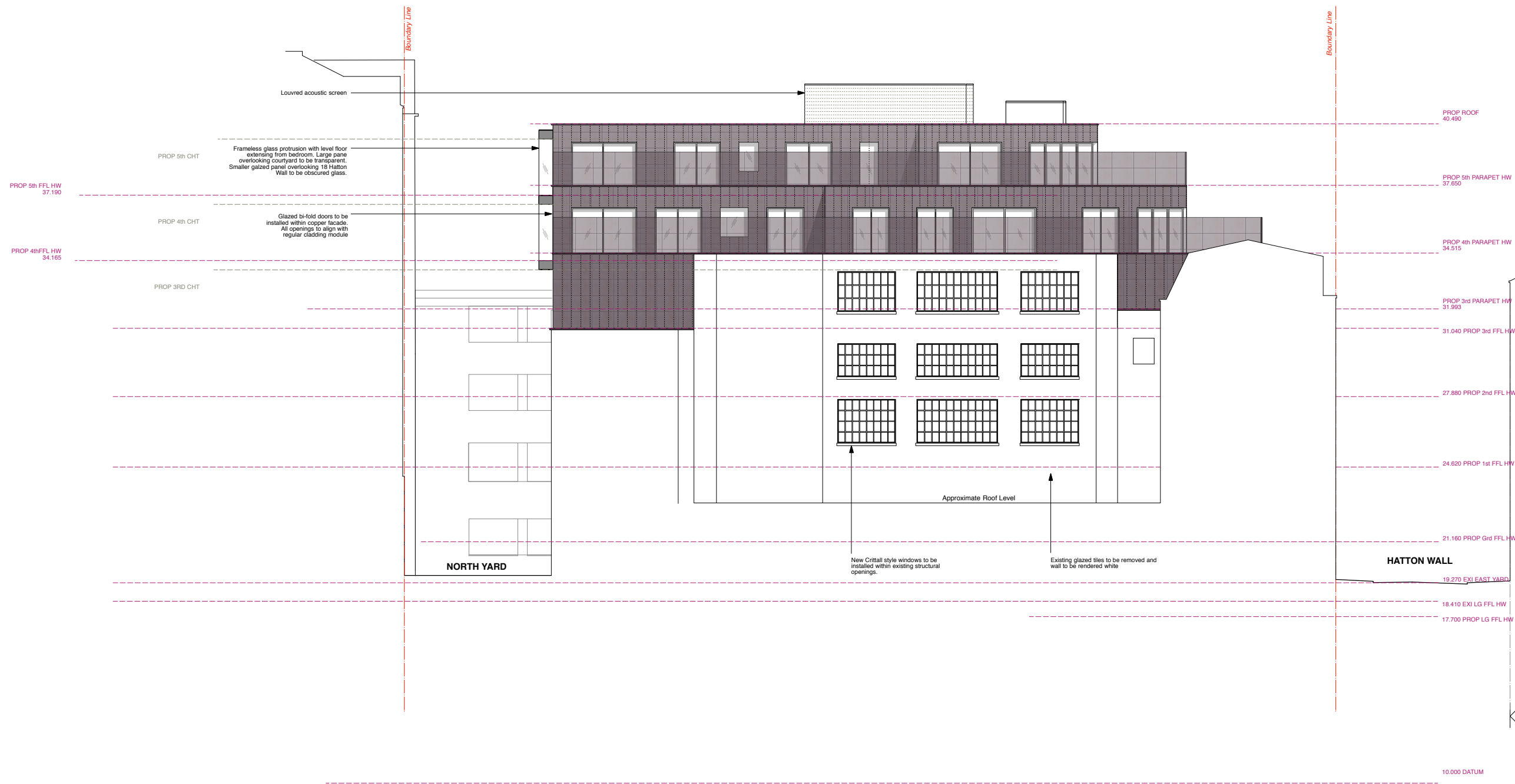
PROJECT		18-26 HATTON WALL, LONDON, EC1N 8JH		DRAWING TITLE		PROPOSED FRONT ELEVATION SETTING OUT	
CLIENT		BOULTBEE (HATTON WALL) LTD		 architecture & interior design		Unit 1 9a Dallington Street Clerkenwell London EC1V 0BQ	
rev. A	date 28/04/2015	notes	Construction developments	SCALE 1:100@A1 / 1:200 @A3	DATE APRIL 15	DWG BY JA	REV. A
© gpad London Ltd.		CHKD. CB	DWG NO. 435-PA.11	T: 020 7549 2133 F: 020 7549 2144 E: info@gpadltd.com W: www.gpadltd.com			



PROJECT		18-26 HATTON WALL, LONDON, EC1N 8JH		DRAWING TITLE		PROPOSED REAR ELEVATION SETTING OUT	
CLIENT		BOULTBEE (HATTON WALL) LTD		 architecture & interior design		Unit 1 9a Dallington Street Clerkenwell London EC1V 0BQ	
rev. A	date 28/04/2015	notes Construction developments	SCALE 1:100@A1 / 1:200 @A3	DATE APRIL 15	DWG BY JA	REV. A	T: 020 7549 2133 F: 020 7549 2144 E: info@gpadltd.com W: www.gpadltd.com
© gpad London ltd.			CHKD. CB	DWG NO. 435-PA.12			



PROJECT		18-26 HATTON WALL, LONDON, EC1N 8JH		DRAWING TITLE		PROPOSED EAST ELEVATION SETTING OUT	
CLIENT		BOULTBEE (HATTON WALL) LTD		gpad		architecture & interior design	
rev. A	date 28/04/2015	notes	Construction developments	SCALE 1:100@A1 / 1:200 @A3	DATE APRIL 15	DWG BY JA	REV. C
© gpad London Ltd.				CHKD. CB	DWG NO. 435-PA.13	T: 020 7549 2133 F: 020 7549 2144 E: info@gpadltd.com W: www.gpadltd.com	
						Unit 1 9a Dallington Street Clerkenwell London EC1V 0BQ	



No. 31



PROJECT		18-26 HATTON WALL, LONDON, EC1N 8JH		DRAWING TITLE		PROPOSED WEST ELEVATION SETTING OUT	
CLIENT		BOULTBEE (HATTON WALL) LTD		gpad		architecture & interior design	
rev. A	date 28/04/2015	notes	Construction developments	SCALE 1:100@A1 / 1:200 @A3	DATE APRIL 15	DWG BY JA	REV. A
© gpad London Ltd.				CHKD. CB	DWG NO. 435-PA.14	T: 020 7549 2133 F: 020 7549 2144 E: info@gpadltd.com W: www.gpadltd.com	
						Unit 1 9a Dallington Street Clerkenwell London EC1V 0BQ	