



Store Name: Kentish Town
 Store No: 5818
 Store Type: Everyday Convenience - Premium
 Programme: Rollback
 Address: 250-254 Kentish Town Road
 Kentish Town
 London
 NW5 2AB
 CAD ref: N/A

Revision:
 Rev A

Rev A1 (Planning)
 Rev A2 (Planning)

05/04/16 - KA - Original Scheme
 17/06/16 - KA - Fascia sign D amended following check survey, trough light removed from section.
 27/07/16 - TH - Corrected HAGLs & address
 25/08/16 - TH - Added illumination extra detail

delivering
 branded
 environments™



Telephone:
 0113 270 5595
 Facsimile:
 0113 277 1143
 E-mail:
 postbox@futurama.ltd.uk

Olympia House
 Lockwood Court
 Middleton Grove
 Leeds
 LS11 5TY
 United Kingdom



Existing - Elevation 1

Telephone:
0113 270 5595
Facsimile:
0113 277 1143
E-mail:
postbox@futura.ma.ltd.uk

Olympia House
Lockwood Court
Middleton Grove
Leeds
LS11 5TY
United Kingdom

delivering
branded
environments™





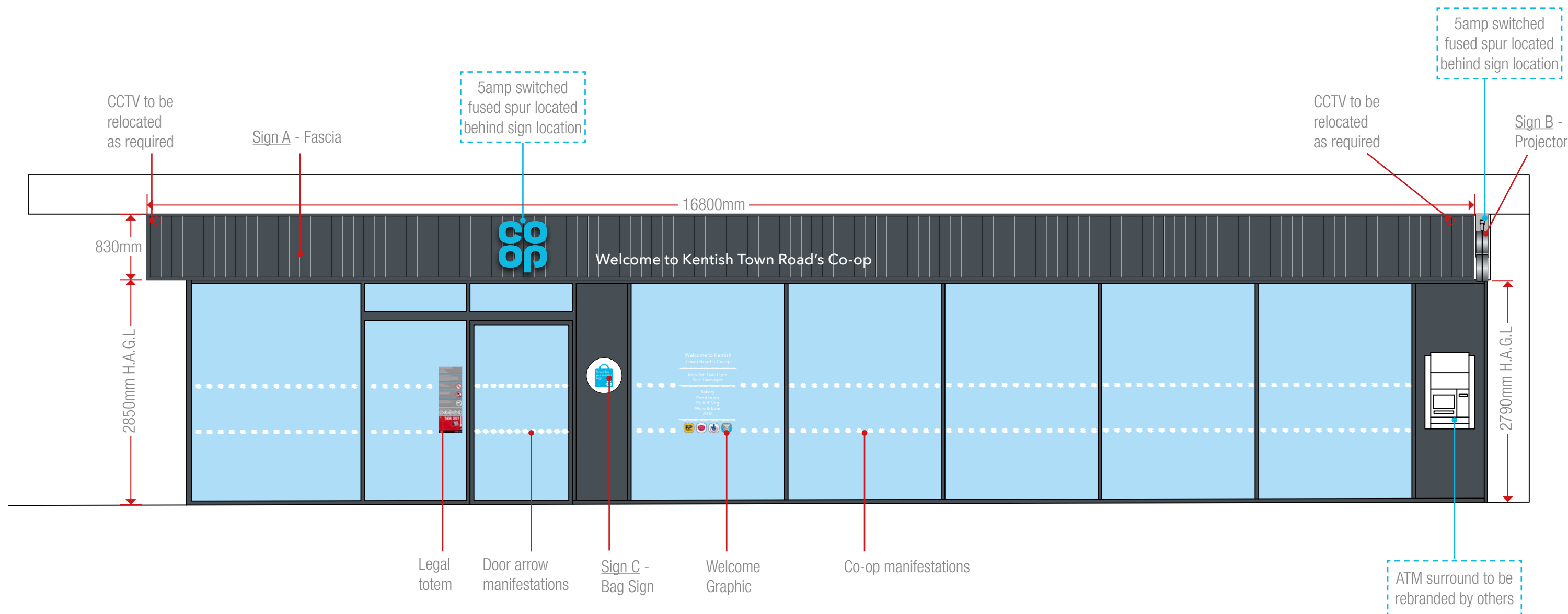
Photos of store

Telephone:
0113 270 5595
Facsimile:
0113 277 1143
E-mail:
postbox@futura.ltd.uk

Olympia House
Lockwood Court
Middleton Grove
Leeds
LS11 5TY
United Kingdom

delivering
branded
environments™





Proposed Elevation 1
Scale 1:50 @A3

Key:

Actions to be carried out by others
New sign references/ general notes

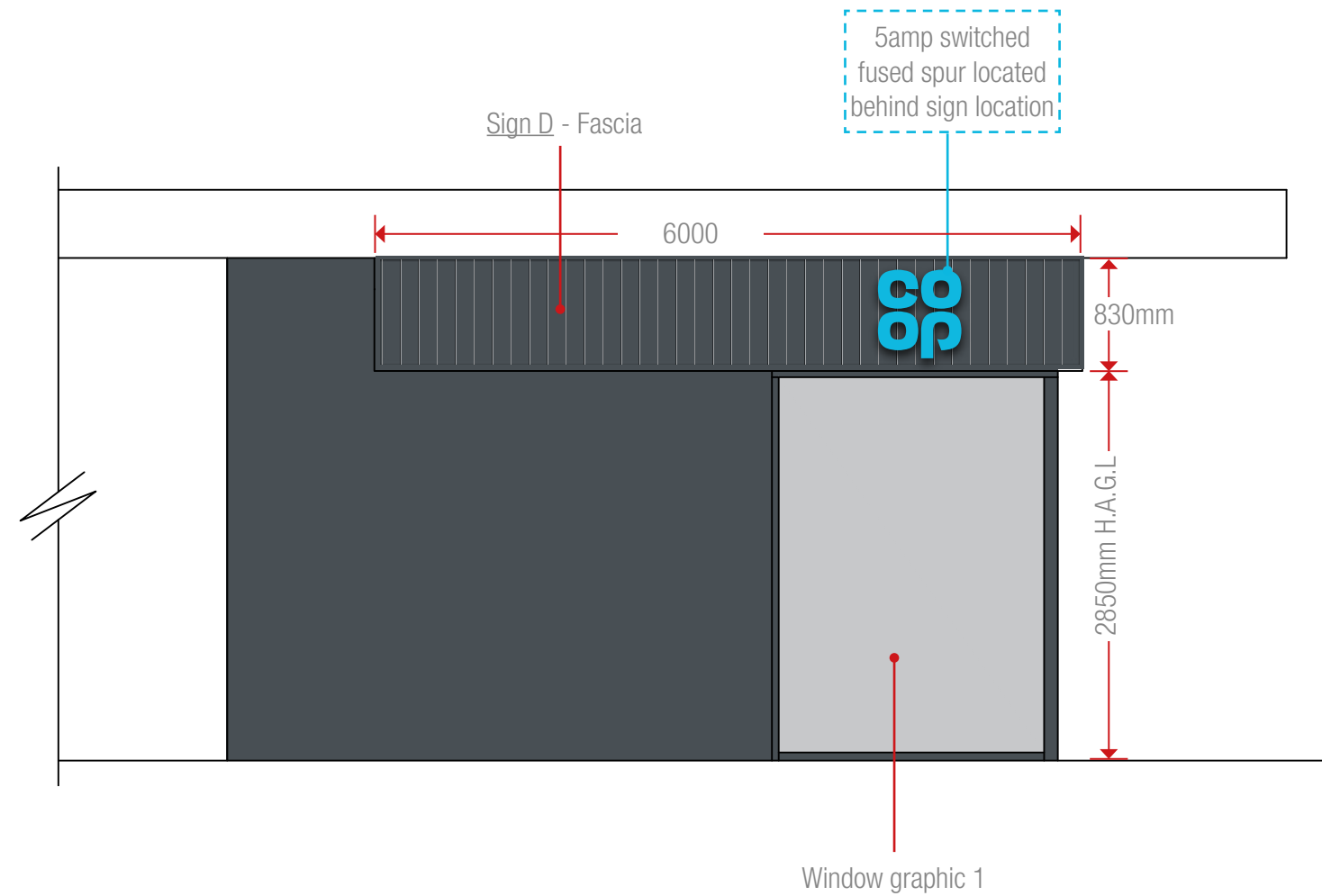


Telephone:
0113 270 5595
Facsimile:
0113 277 1143
E-mail:
postbox@futura.ltd.uk

Olympia House
Lockwood Court
Middleton Grove
Leeds
LS11 5TY
United Kingdom

delivering
branded
environments™





Proposed Elevation 2
Scale 1:50 @A3

Key:

Actions to be carried out by others
New sign references/ general notes



Telephone:
0113 270 5595
Facsimile:
0113 277 1143
E-mail:
postbox@futurama.ltd.uk

Olympia House
Lockwood Court
Middleton Grove
Leeds
LS11 5TY
United Kingdom

delivering
branded
environments™





Sign A - 16800 x 830mm (WxH) including upstand



Logo

Welcome to Kentish Town Road's Co-op

Letters



Sign D - 6000 x 830mm (WxH) including upstand



Logo

Scale 1:50 @ A3

Sign A & D Specifications:

Fascia

Aluminium slat fascia to suit site conditions.

Fascia constructed from individual Aluminium extrusions. Perimeter support extrusion fixed to the building substrate with suitable fixings, Aluminium vertical slats mounted and fixed to the support extrusion and trimmed around the perimeter with a chamfered trim.

Slat and trim to be finished Dark Grey Wood effect:

Decoral powder coating: 8G-940-A005 (lab code FP 714/38)

Decoral sublimatic Film: 2217/19 L.

(CFP-EX-I/M & CFP-EX-G/DG & CFP-EX-H/DG & CFP-EX-A/DG)

Logo

650mm Single sided built up logo.(CFP-L-WM0650-WM/B)

Steel mounting plate with individual built-up internally illuminated letters.Mounting plate to be 3mm Mild Steel fixed to building substrate with brass locator fixings.

3D built-up letters to have aluminium sides, 50mm deep with 5mm

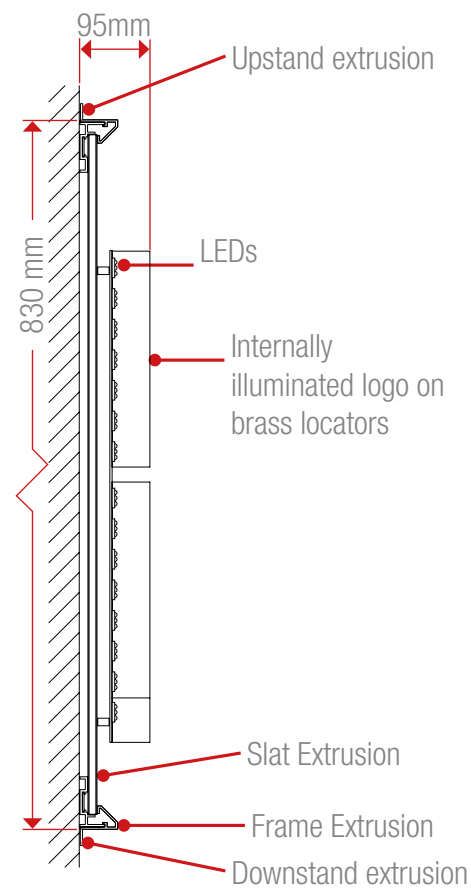
Co-op BLUE acrylic faces. All visible edges, aluminium returns & mounting plate to be finished Silver RAL 9006 60% gloss.

Internally illuminated by white LEDs.

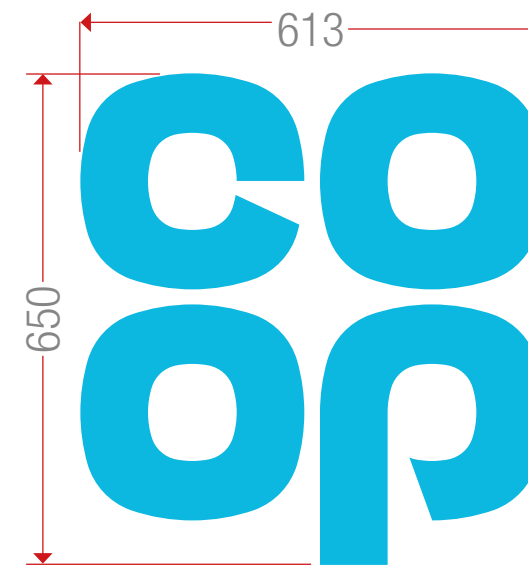
Letters

"Welcome to Anytown Co-op" 190mm to match 500mm/650mm

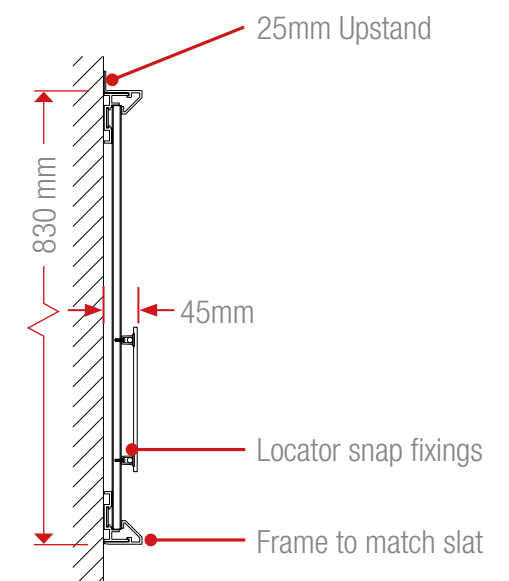
logo to be from 5mm WHITE Perspex 069 Acrylic on locator snap fixings.(CFP-WL0650-A/W)



Logo Cross Section
Scale 1:10 @A3



Size 2 - 650mm
Scale 1:10



Letters Cross Section
Scale 1:10 @A3



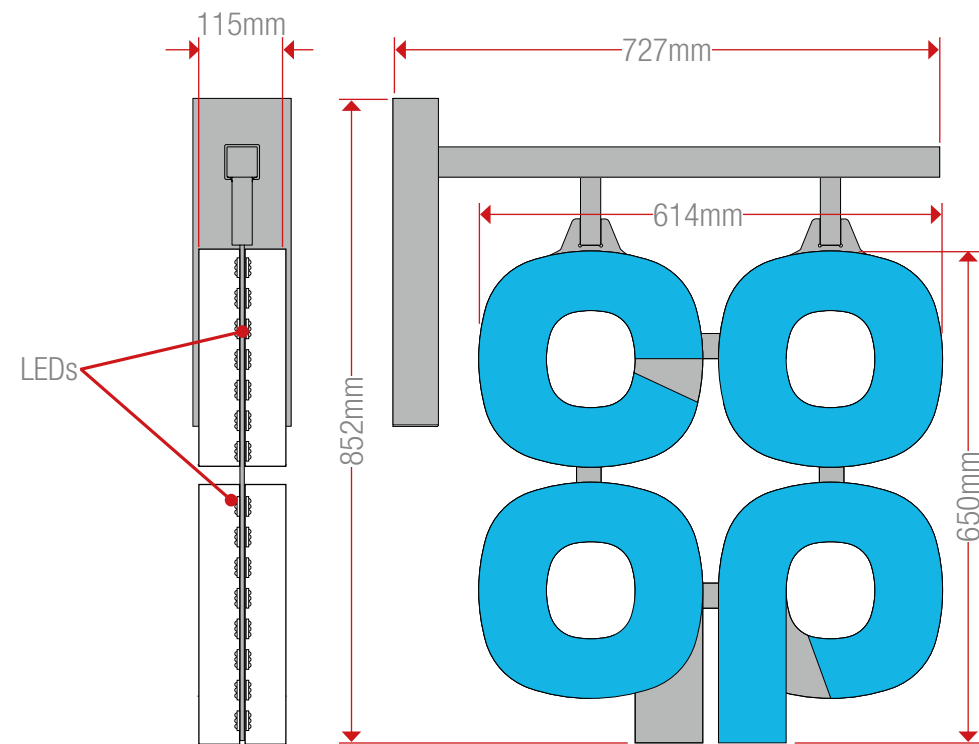
Collections

Telephone:
0113 270 5595
Facsimile:
0113 277 1143
E-mail:
postbox@futura.com

Olympia House
Lockwood Court
Middleton Grove
Leeds
LS11 5TY
United Kingdom

delivering
branded
environments™



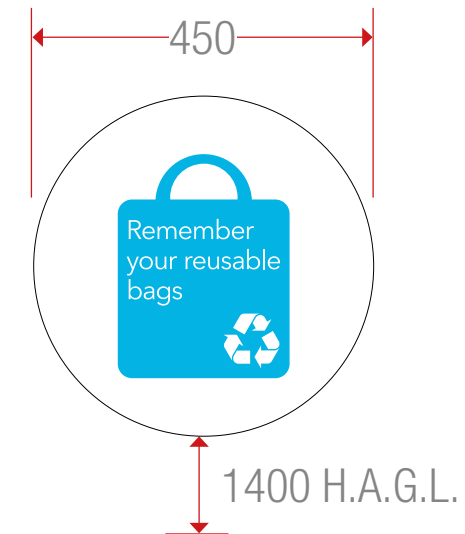


Size 2 - 650mm
Scale 1:10

Sign B Specifications:

Projection sign size 2 (650mm) Internally Illuminated built up letters on both sides. Individual 3D letters constructed from silver aluminium side returns and Co-op BLUE acrylic faces - faces only to illuminate.

Fully welded 5mm Mild Steel wall mounting plate and support frame. Profile cut logo mounting plate from 5mm Mild Steel, welded to the hanging tubes. All visible steel work to be finished silver to match RAL 9006 60% gloss. (CFP-P-FF0650/B).



Sign C - Scale 1:10

450mm dia. Circular parking icon "Remember your reusable bags"
Flat aluminium panel with applied vinyl display, anti-graffiti lacquered, rounded corners.
Non-illuminated.
(CFP-CP-WM-0450-I002)



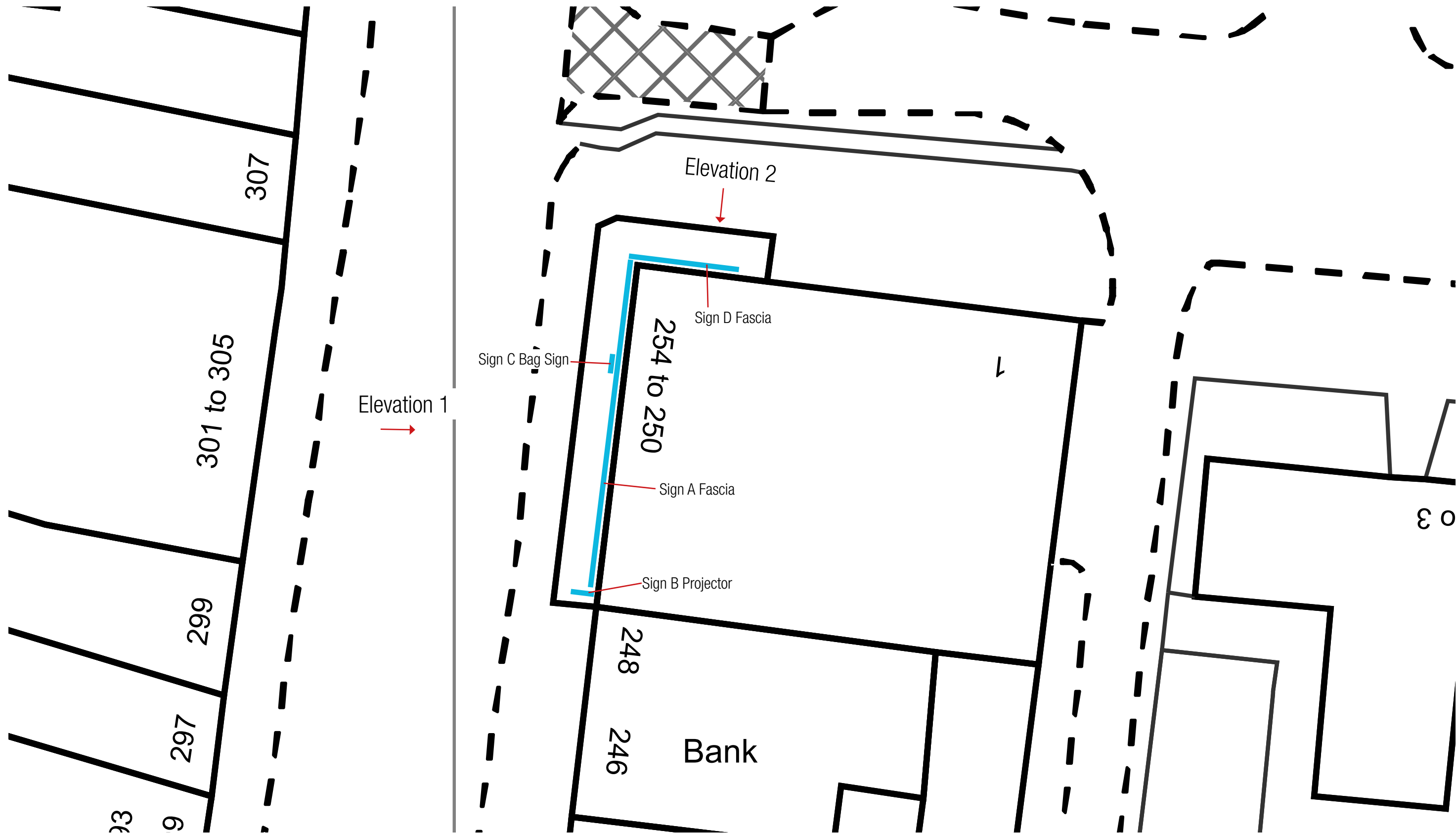
Collections

Telephone:
0113 270 5595
Facsimile:
0113 277 1143
E-mail:
postbox@futura.ltd.uk

Olympia House
Lockwood Court
Middleton Grove
Leeds
LS11 5TY
United Kingdom

delivering
branded
environments™





Proposed Site Plan
Scale: NTS

* 3rd party signs to remain in current locations

Key

Co-op signs
3rd party signs



Telephone:
0113 270 5595
Facsimile:
0113 277 1143
E-mail:
postbox@futurama.ltd.uk

Olympia House
Lockwood Court
Middleton Grove
Leeds
LS11 5TY
United Kingdom

delivering
branded
environments™

