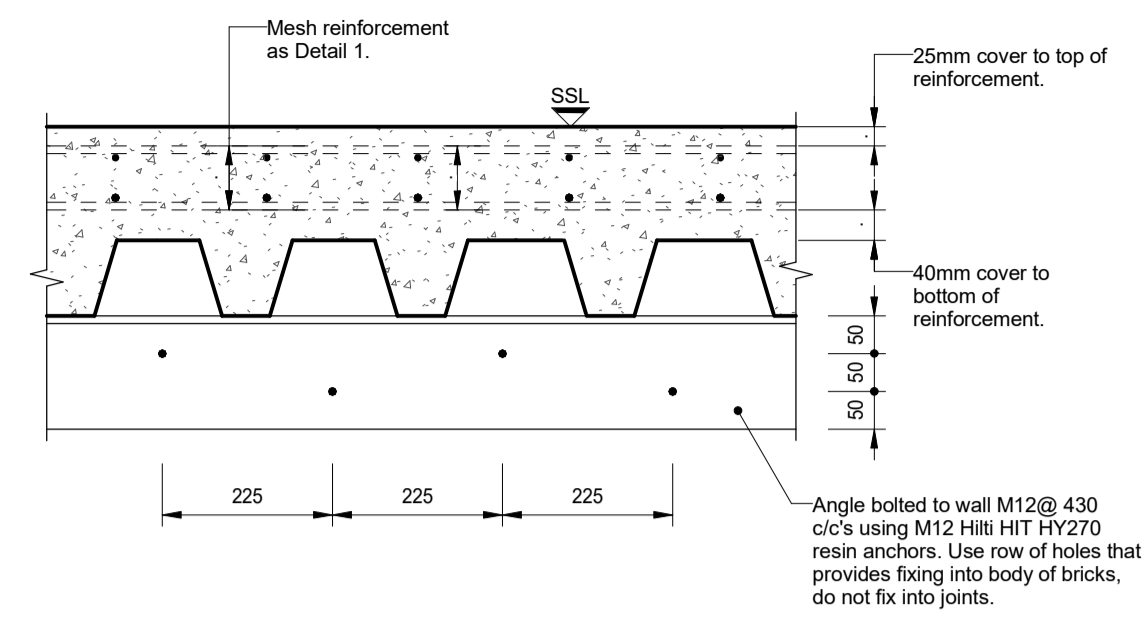


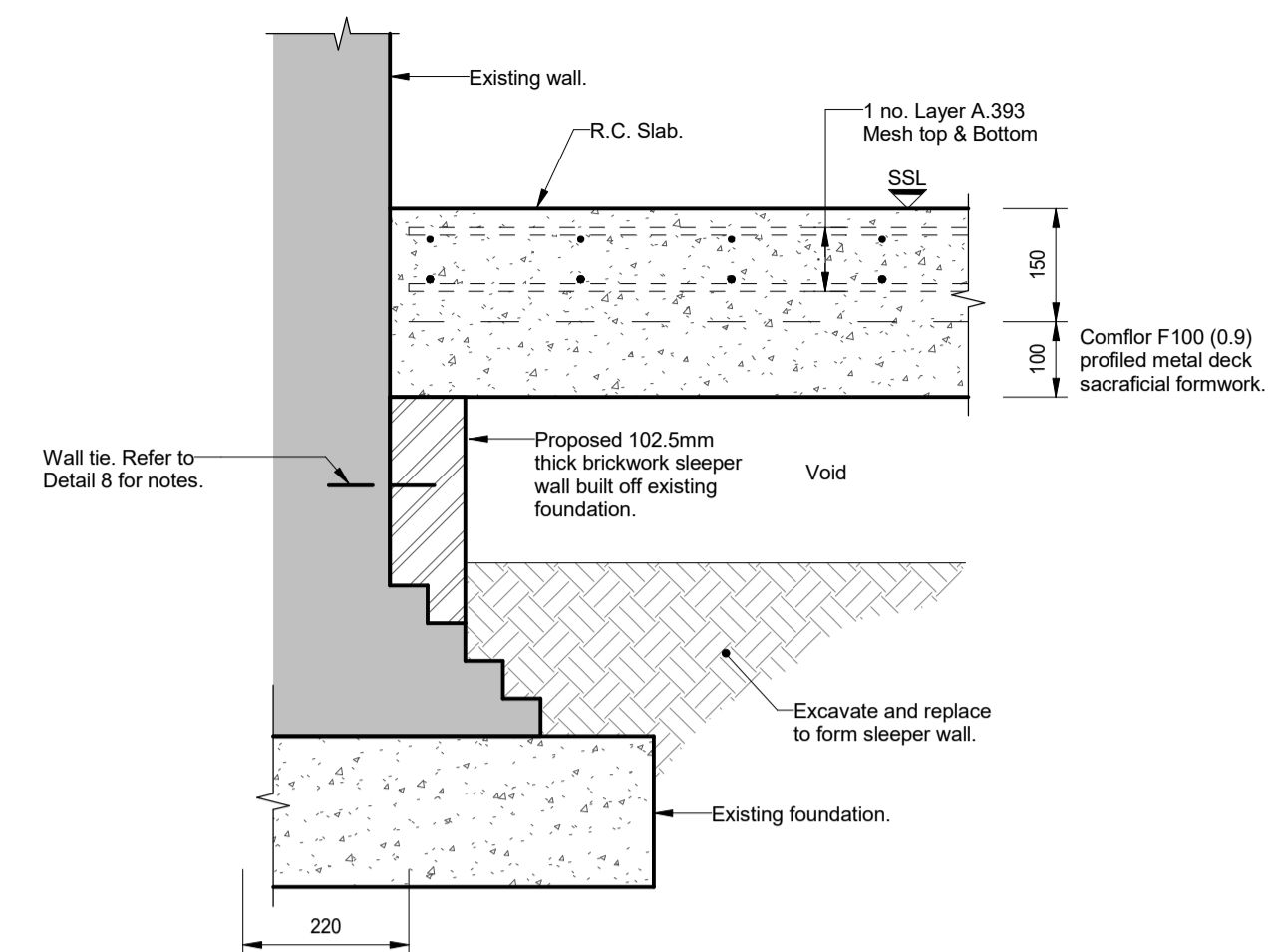
**NOTE**  
Existing brick testing required to confirm angle connection detail. See Section 1-1.

**Detail 1: Typical End Bay Detail**  
scale 1 : 10



**NOTE**  
Existing brick testing required to confirm angle connection detail. See Section 1-1.

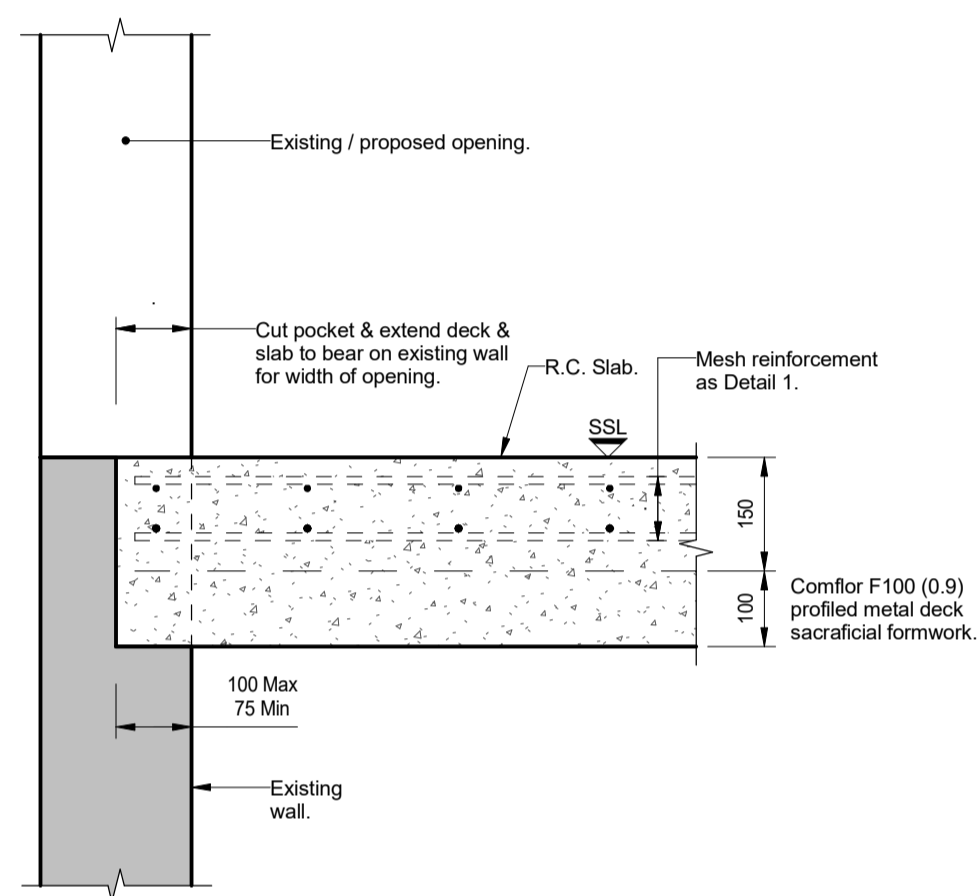
**Section 2-2**



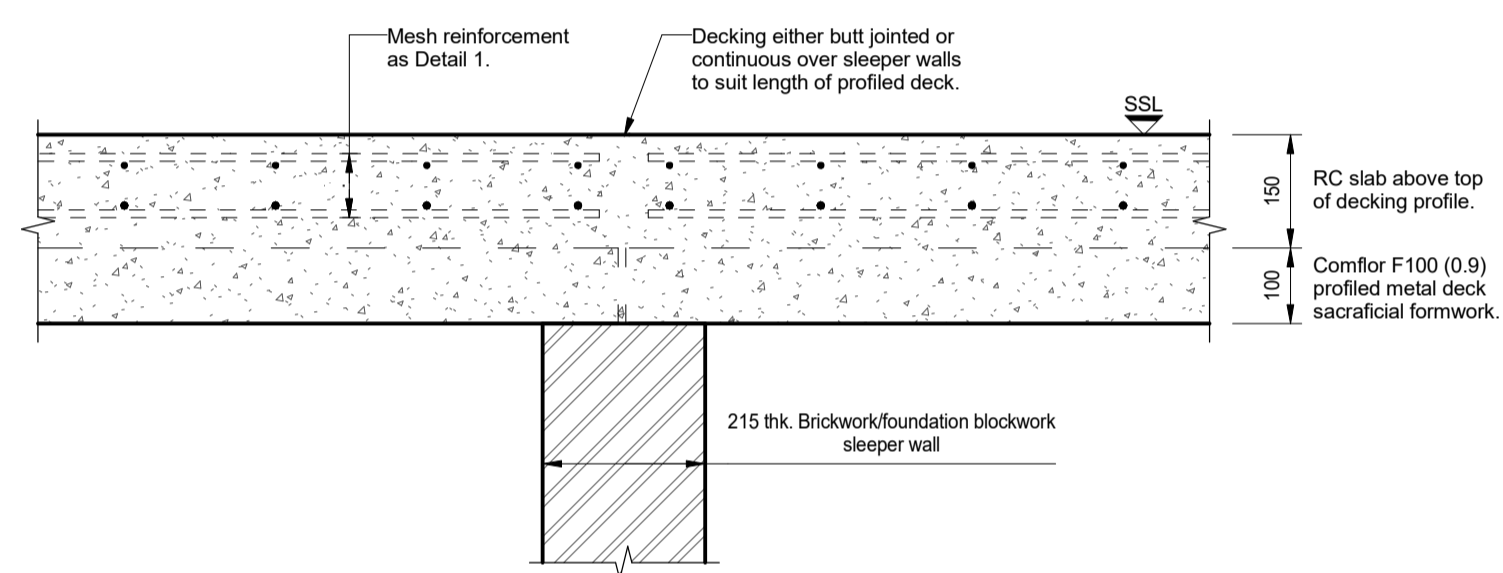
**Detail 3: Proposed Bearing onto Sleeper Wall Off Existing Foundation**  
scale 1 : 10

- General Notes**
1. Drawings shall be referred to for structural work only unless otherwise stated and read in conjunction with Architect's, Service Engineer's and Sub-Contractor's drawings.
  2. The Contractor shall check all levels and dimensions, any errors or omissions are to be reported at once to the Engineer.
  3. For General Notes refer to no. 9100-DRG-99YY-GN002.

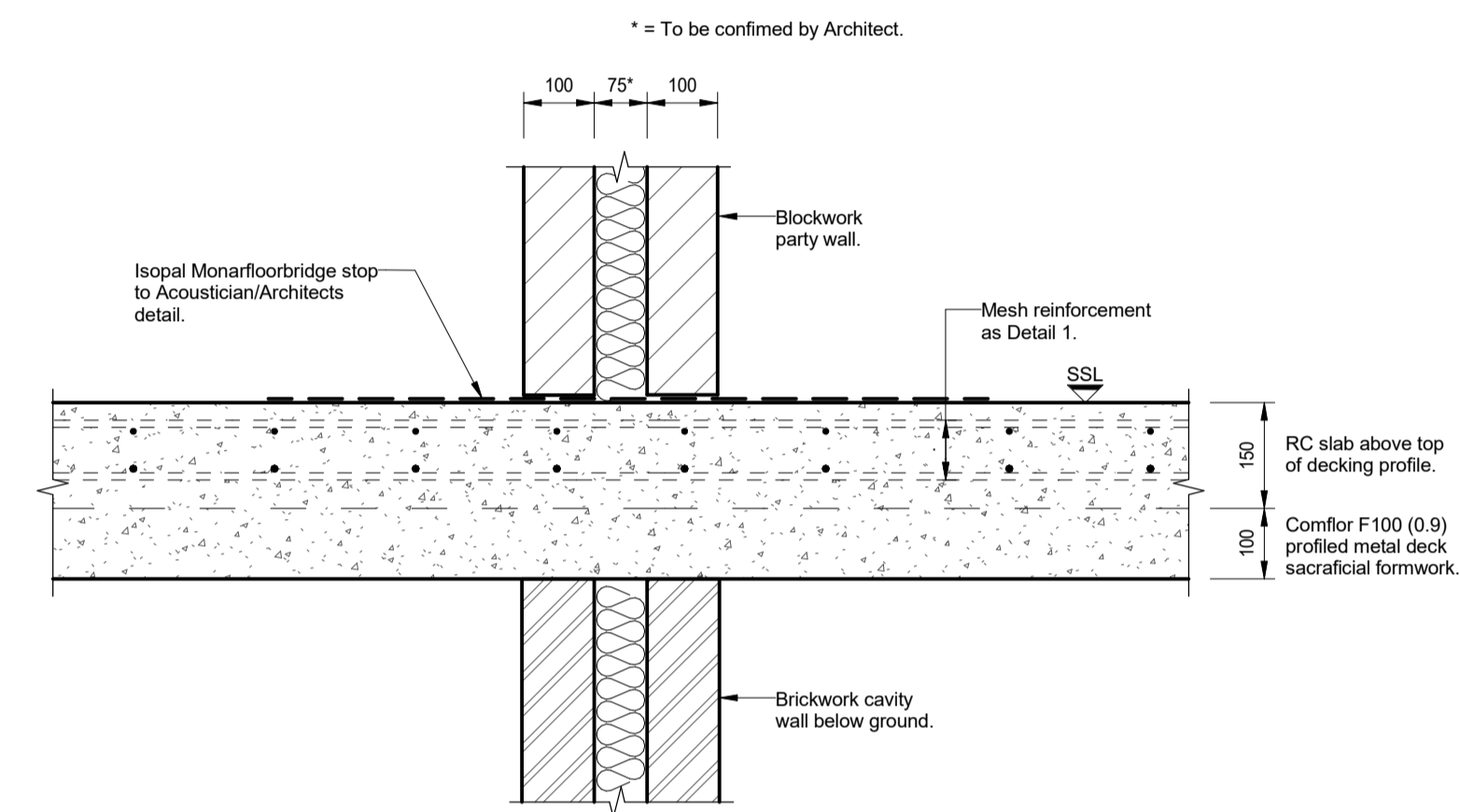
**NOTE**  
1. End & side laps to mesh to be minimum of 450mm  
2. Finishes & damp proofing to architects details.



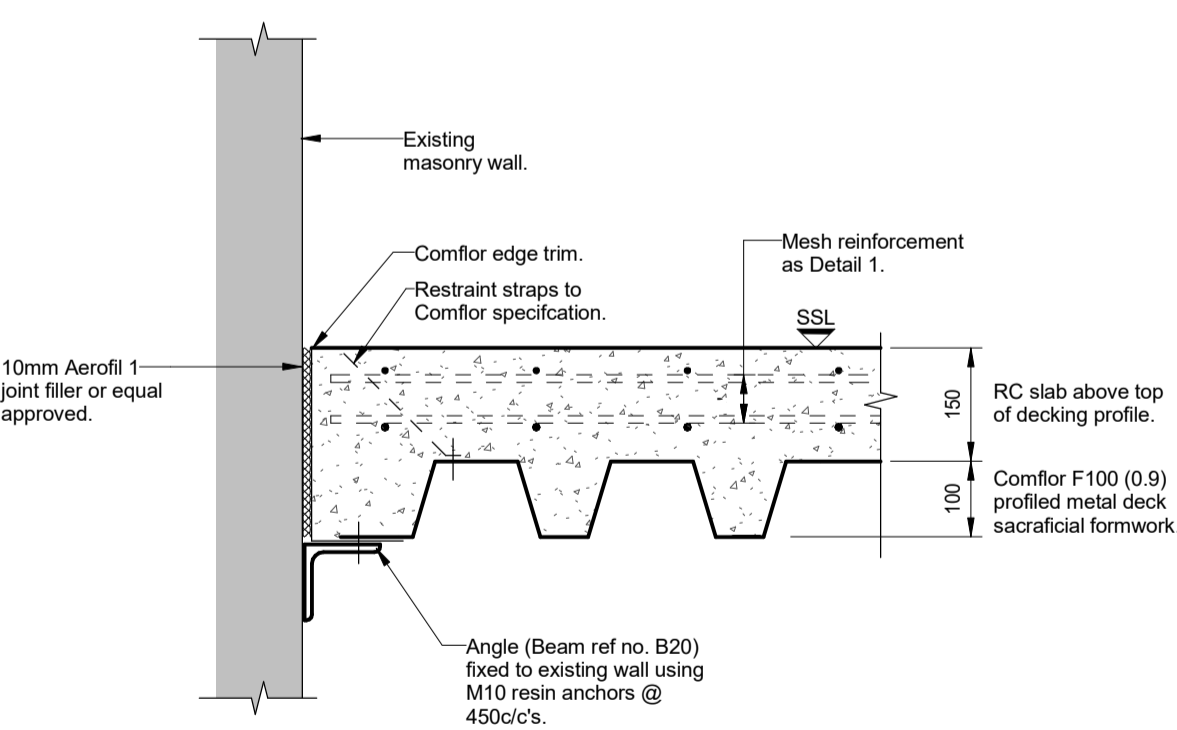
**Detail 4: Proposed Slab Bearing at Openings in Wall**  
scale 1 : 10



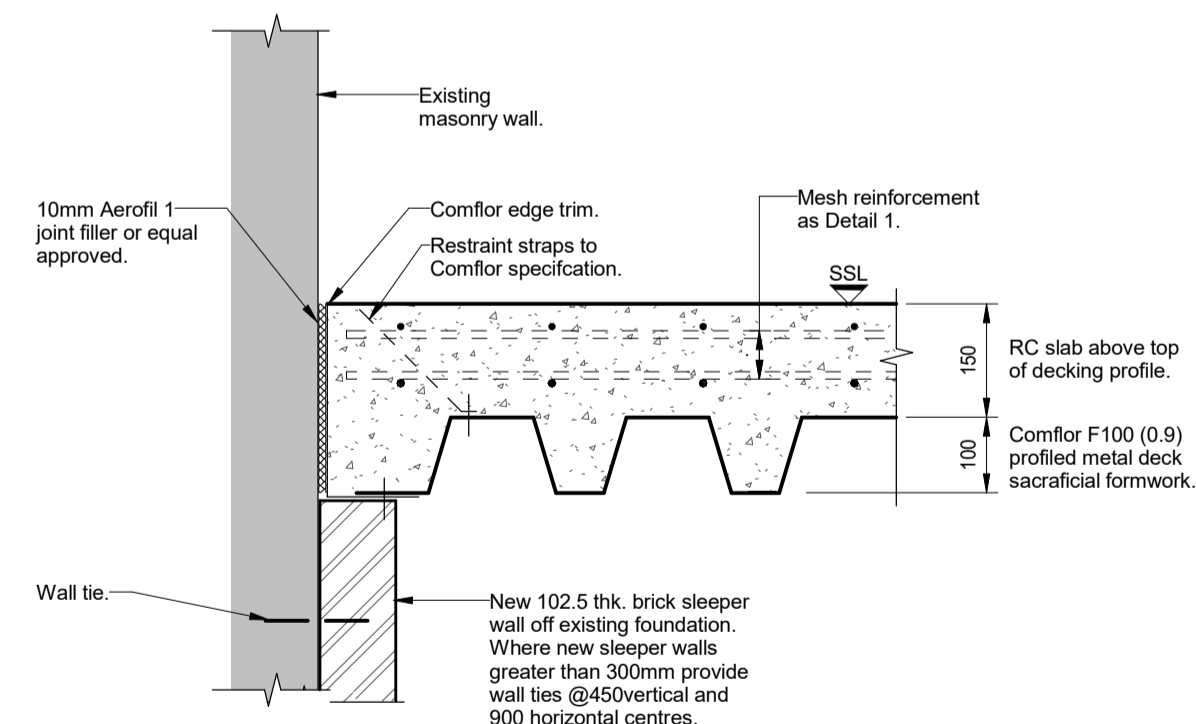
**Detail 5: Proposed Slab Bearing on Sleeper Wall**  
scale 1 : 10



**Detail 6: Proposed Slab Bearing at Party Wall**  
scale 1 : 10



**Detail 7: Typical Edge Detail Where Floor Spans Parallel to Walls (supported on Angle Bracket)**  
scale 1 : 10



**Detail 8: Typical Edge Detail Where Floor Spans Parallel to Walls (supported on new sleeper wall)**  
scale 1 : 10

REV	DATE	DESCRIPTION	BY	CHKD
-	28.07.16	First Issue	DA	TP

**FOR TENDER**



TITLE:  
**Generic Details for Non-Composite Metal Deck RC Floor**

PROJECT:  
Project No:11581  
Kidderpore Avenue

SCALE: A1@ 1:10    DATE: July 16    DRAWN: DA    CHKD: Checker

DRG NO.    REV.

9100-DRG-00YY-DE008    -

**Tully De'Ath** consultants  
Engineering at its Best

T: 01342 828 000  
E: info@tullydeath.com  
W: www.tullydeath.com