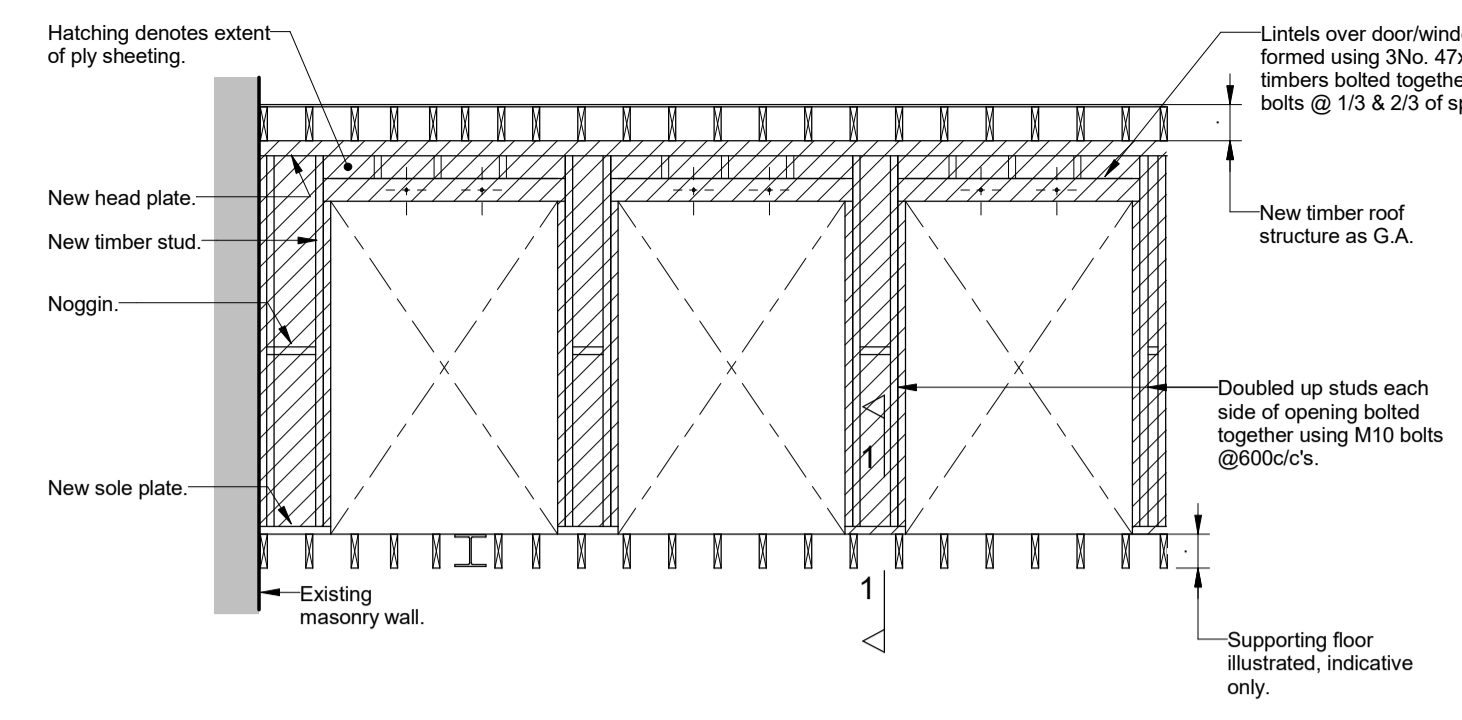
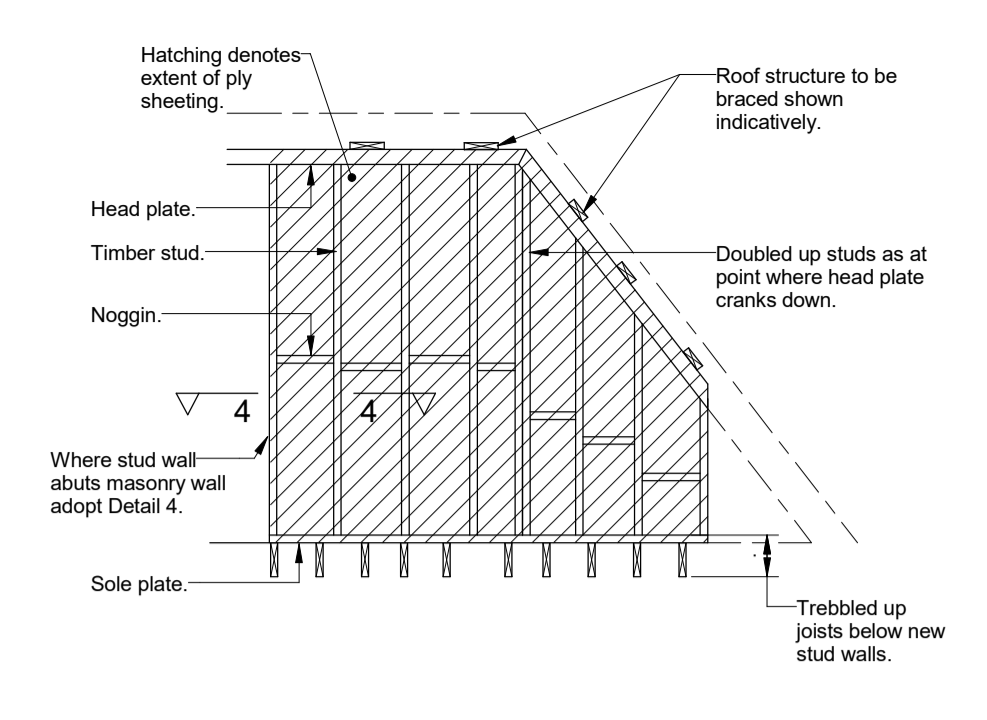


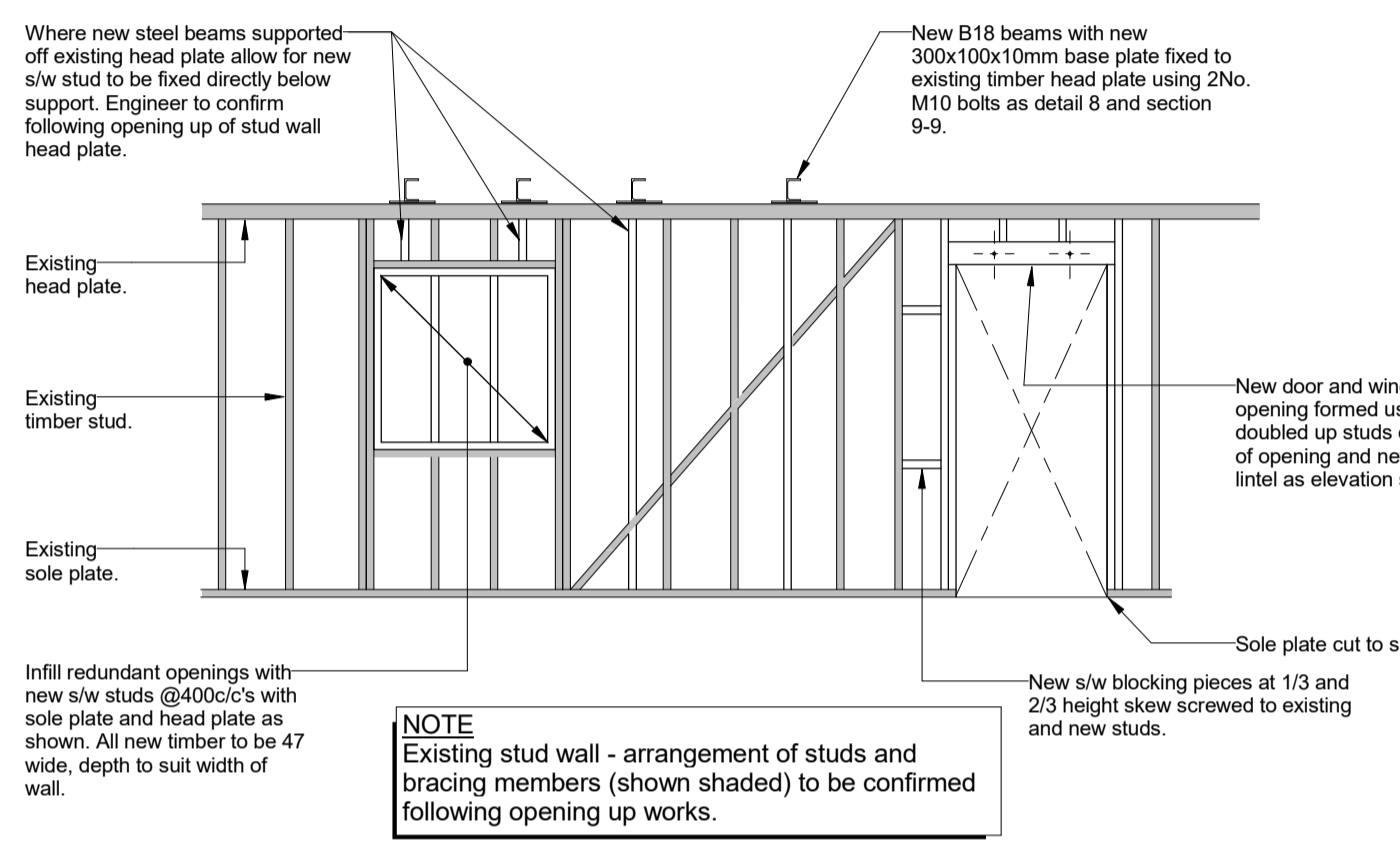
**Elevation of Scenario 1: Plan Stud Wall Supporting Joists/Beams**  
scale 1 : 50



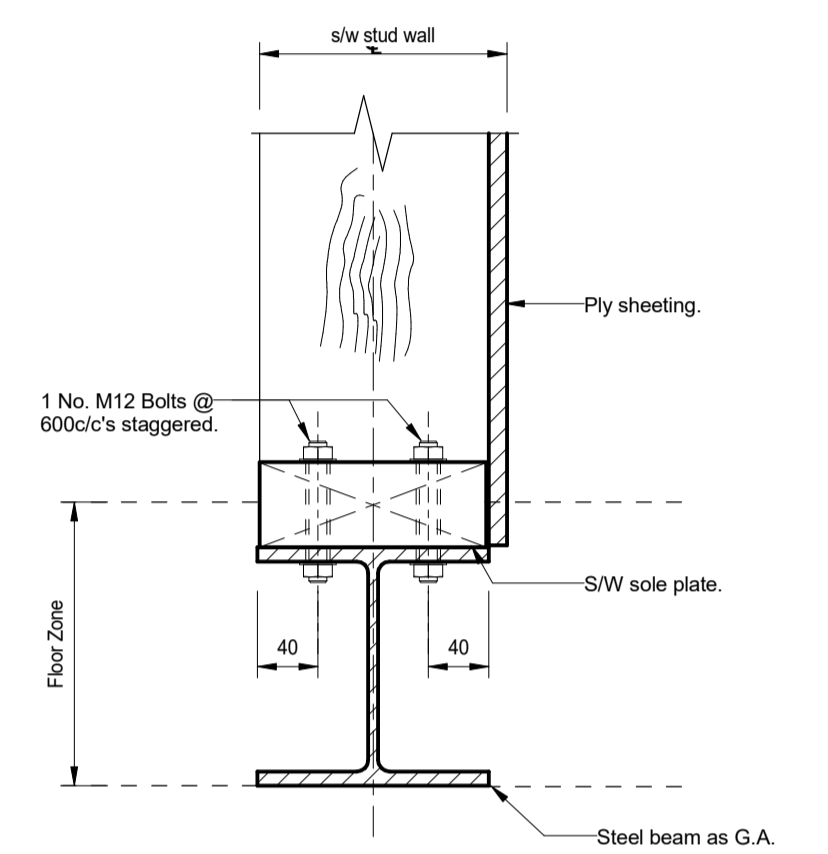
**Elevation of Scenario 2: Plan 150mm Wide Stud Wall with Openings**  
scale 1 : 50



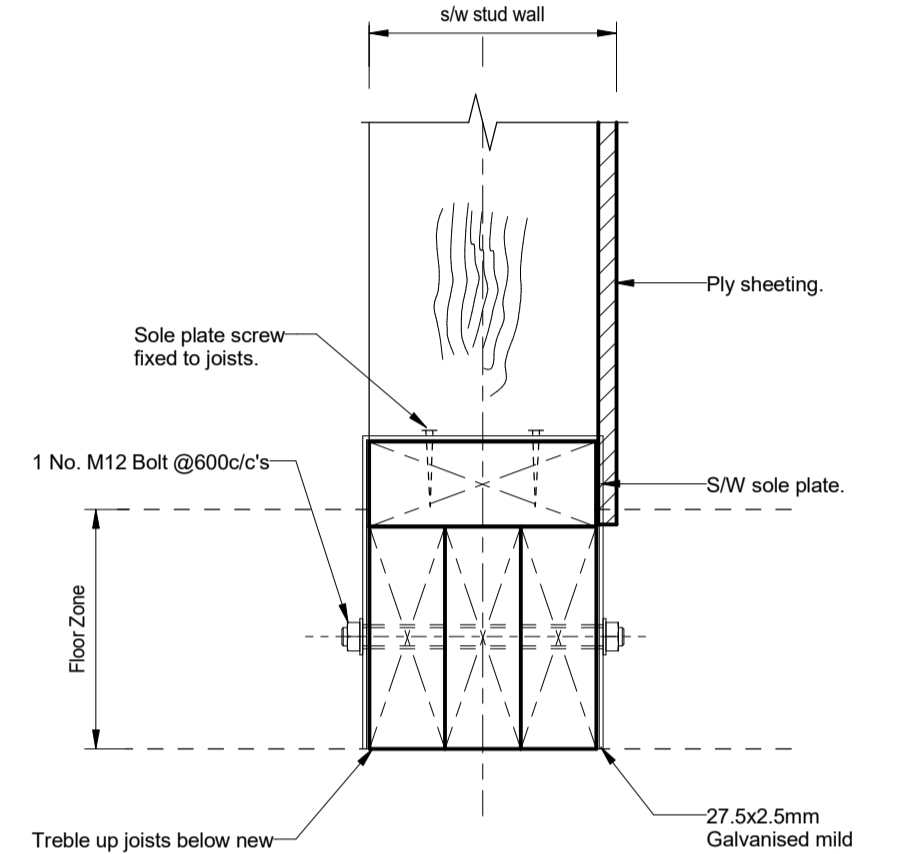
**Elevation of Scenario 3: Plan Bracing Stud Wall Below Roof Structure**  
scale 1 : 50



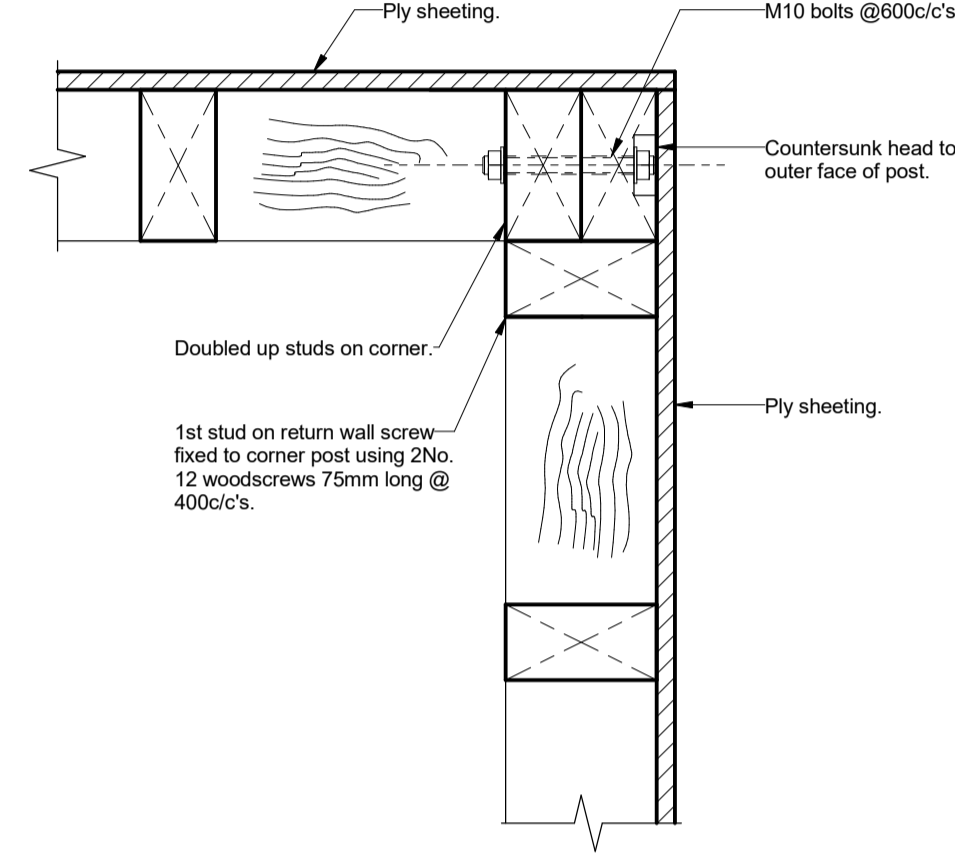
**Elevation of Scenario 4: Alterations to Existing Load Bearing Stud Wall**  
scale 1 : 50



**Detail 1: Sole Plate to Steel Beam Support**  
scale 1 : 5



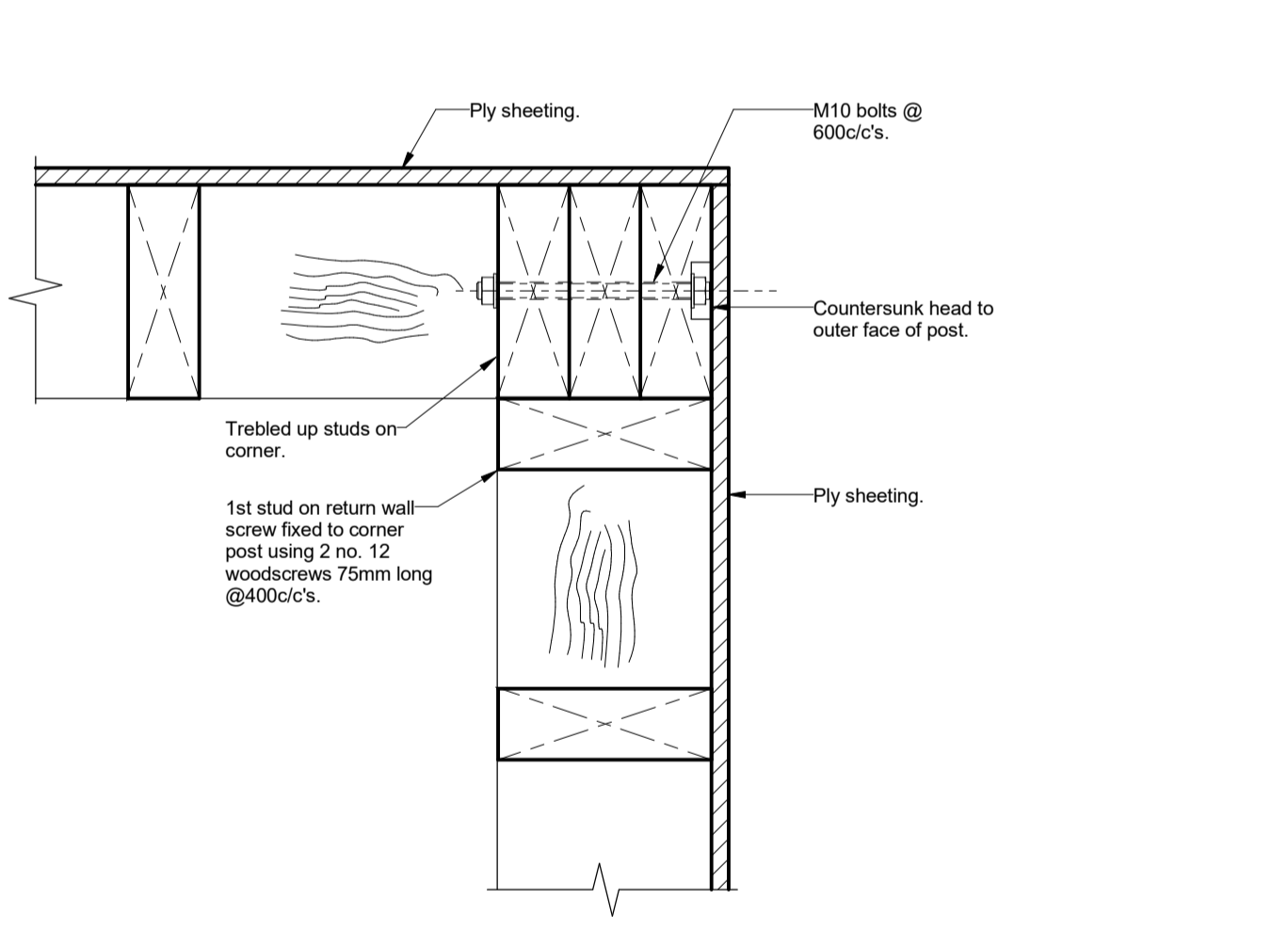
**Detail 2: Sole Plate to Joist Support**  
scale 1 : 5



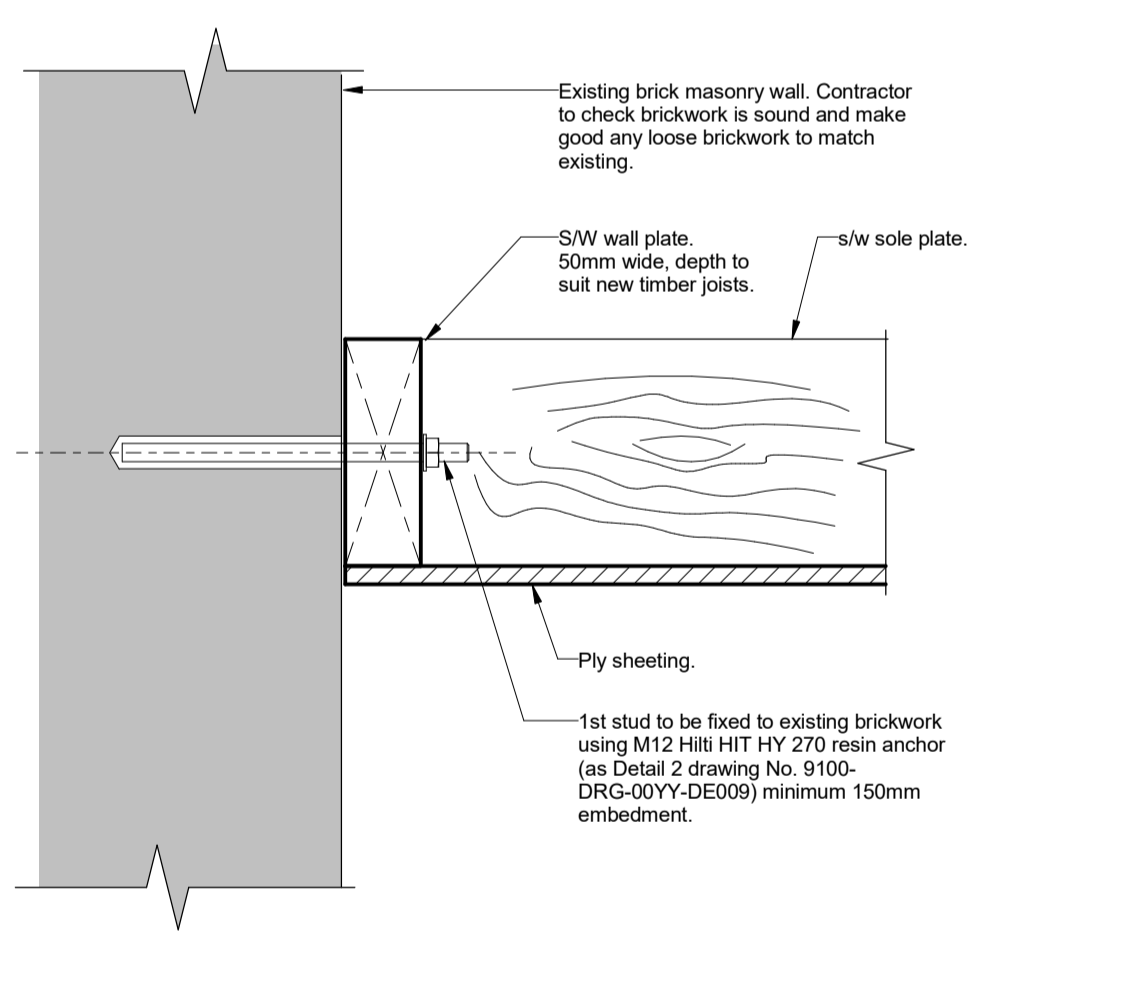
**Detail 3: For 100 Wide Stud Wall**  
scale 1 : 5

**NOTE**  
New 150mm wide load bearing timber stud walls to be formed using 47mm wide by 150mm s/w studs at max 400mm c/c with 72x150mm head plate and sole plate screw-fixed together, with 47x150mm s/w blocking pieces at mid height of studs. 18mm marine ply sheeting to be screw fixed to one face using No.12 woodscrews, 50mm long at 400mm c/c to all elements.

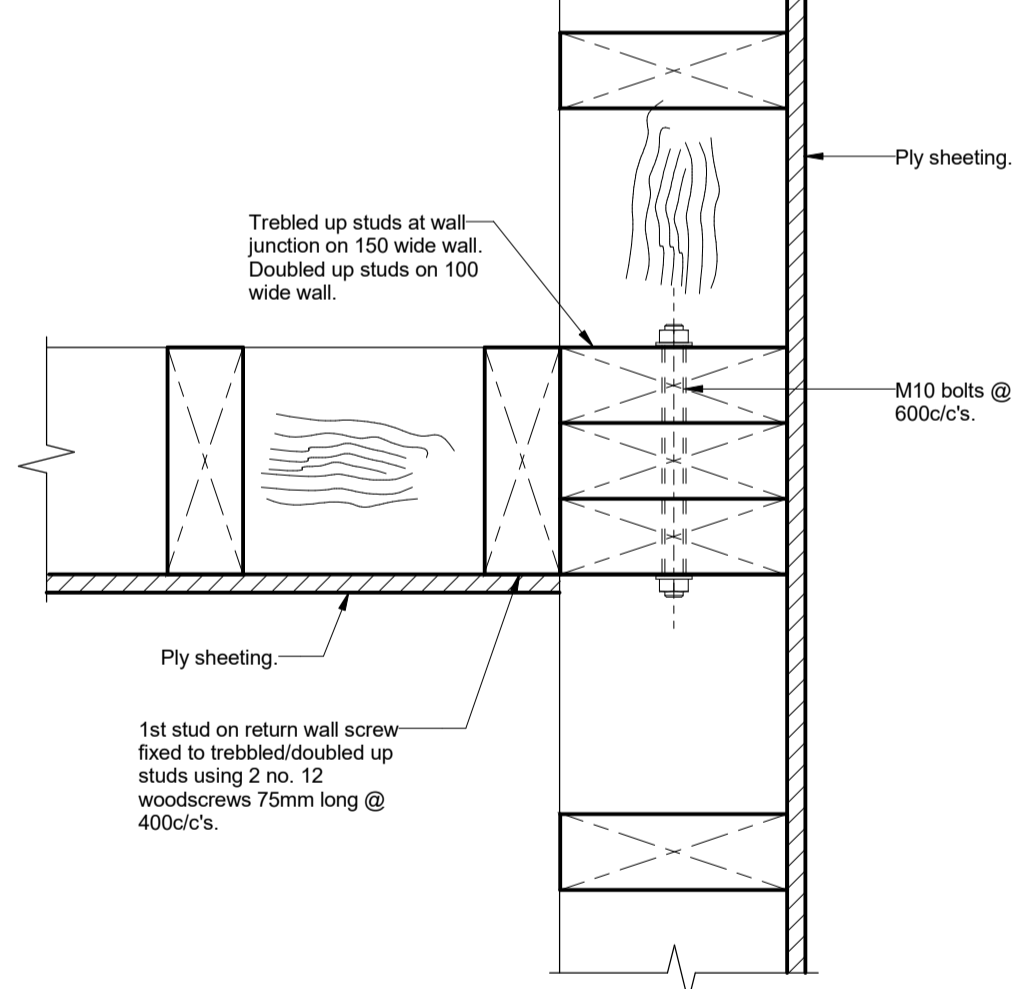
**NOTE**  
New 100mm wide load bearing timber stud walls to be formed using 47mm wide by 100mm s/w studs at max 400mm c/c with 47x100mm head plate and sole plate screw-fixed together, with 47x100mm s/w blocking pieces at mid height of studs. 18mm marine ply sheeting to be screw fixed to one face using No.12 woodscrews, 50mm long at 400mm c/c to all elements.



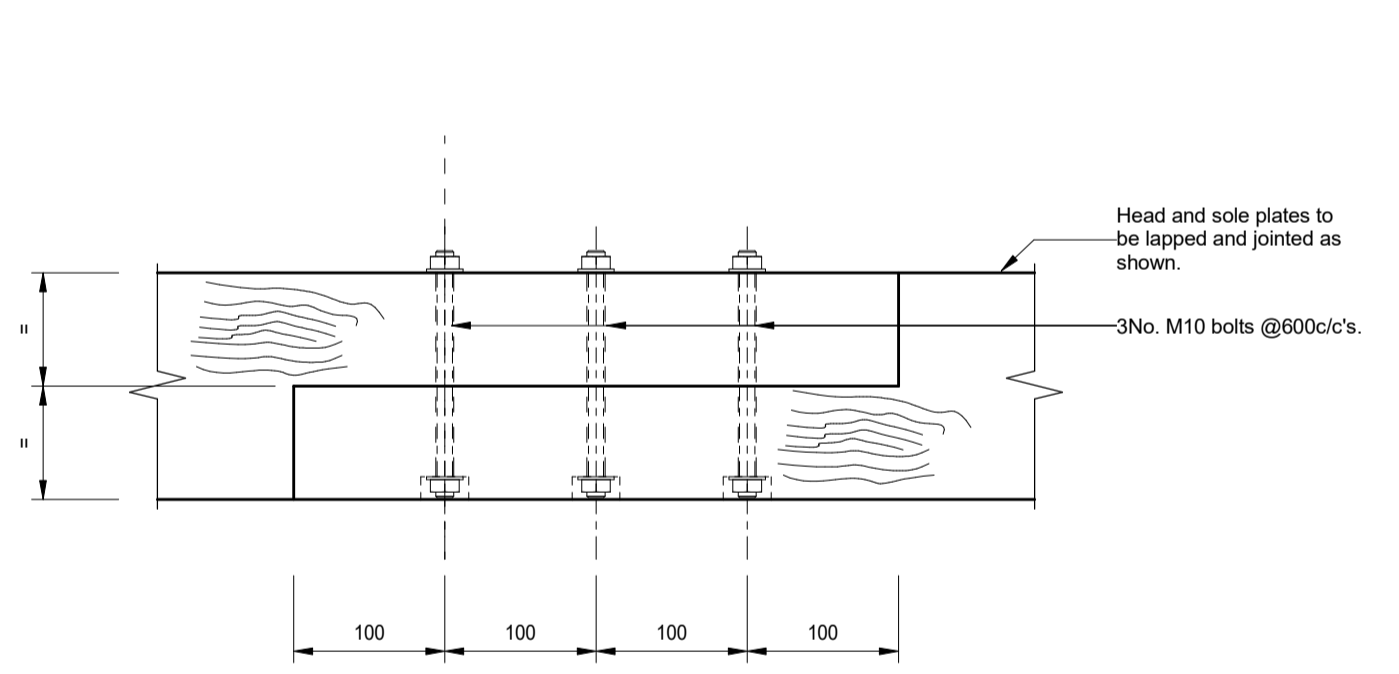
**Detail 3: For 150 Wide Stud Wall**  
scale 1 : 5



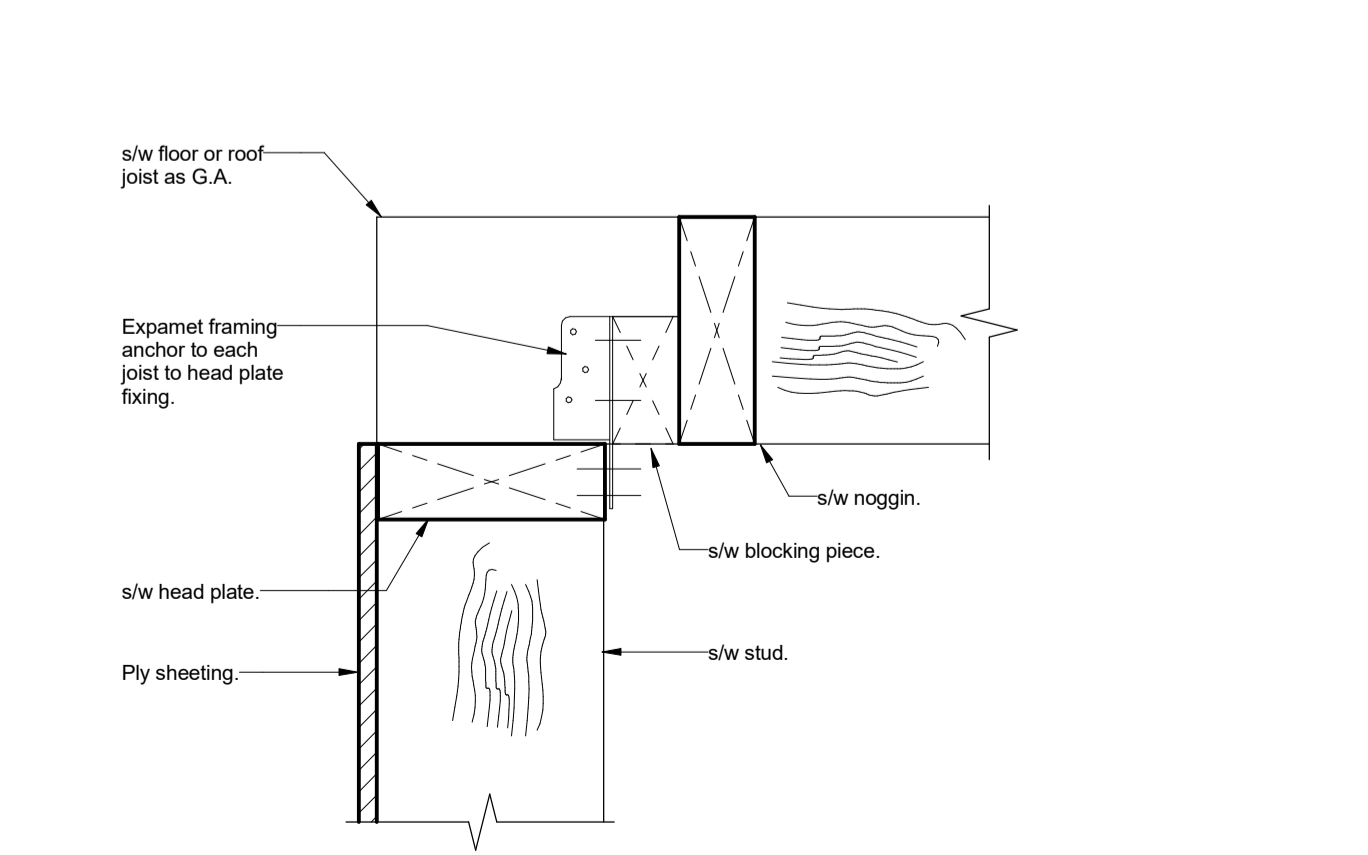
**Detail 4: New Stud Wall to Existing Brick Wall Junction**  
scale 1 : 5



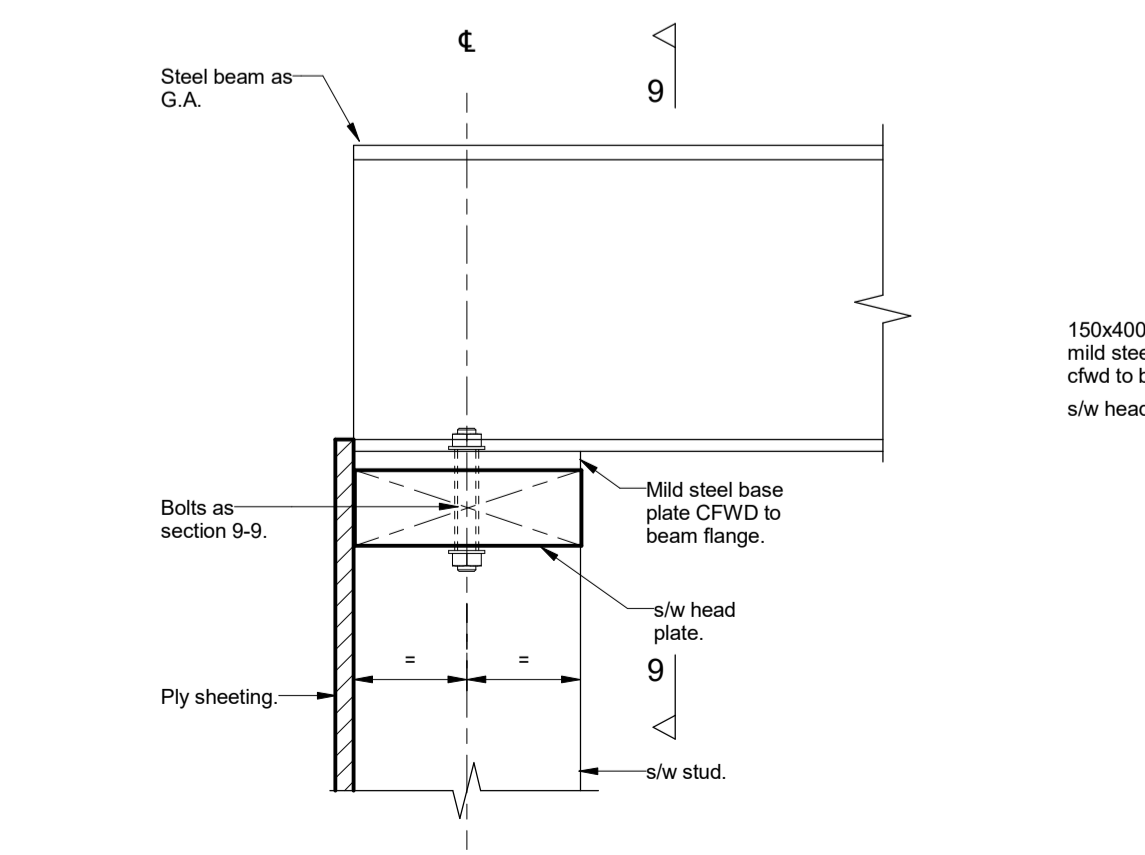
**Detail 5: New Stud Wall to Stud Wall Junction**  
scale 1 : 5



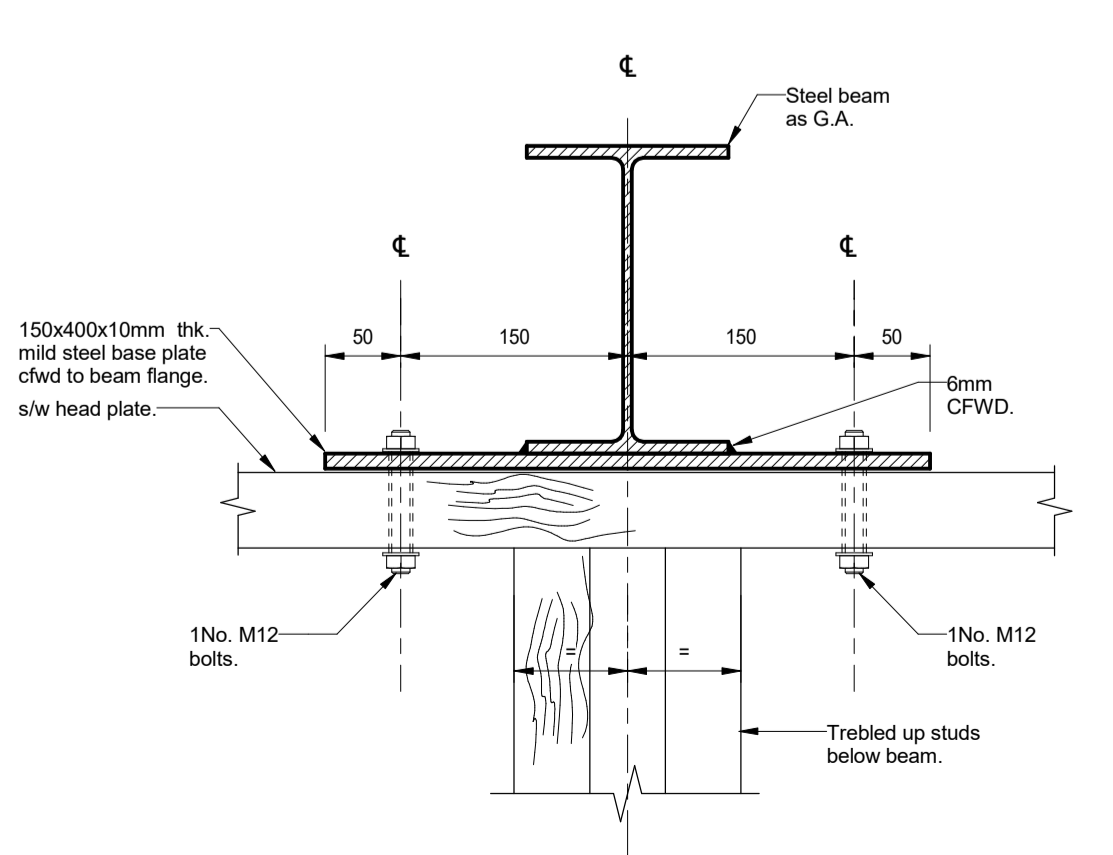
**Detail 6: Lapped Joint to Sole/Head Plate**  
scale 1 : 5



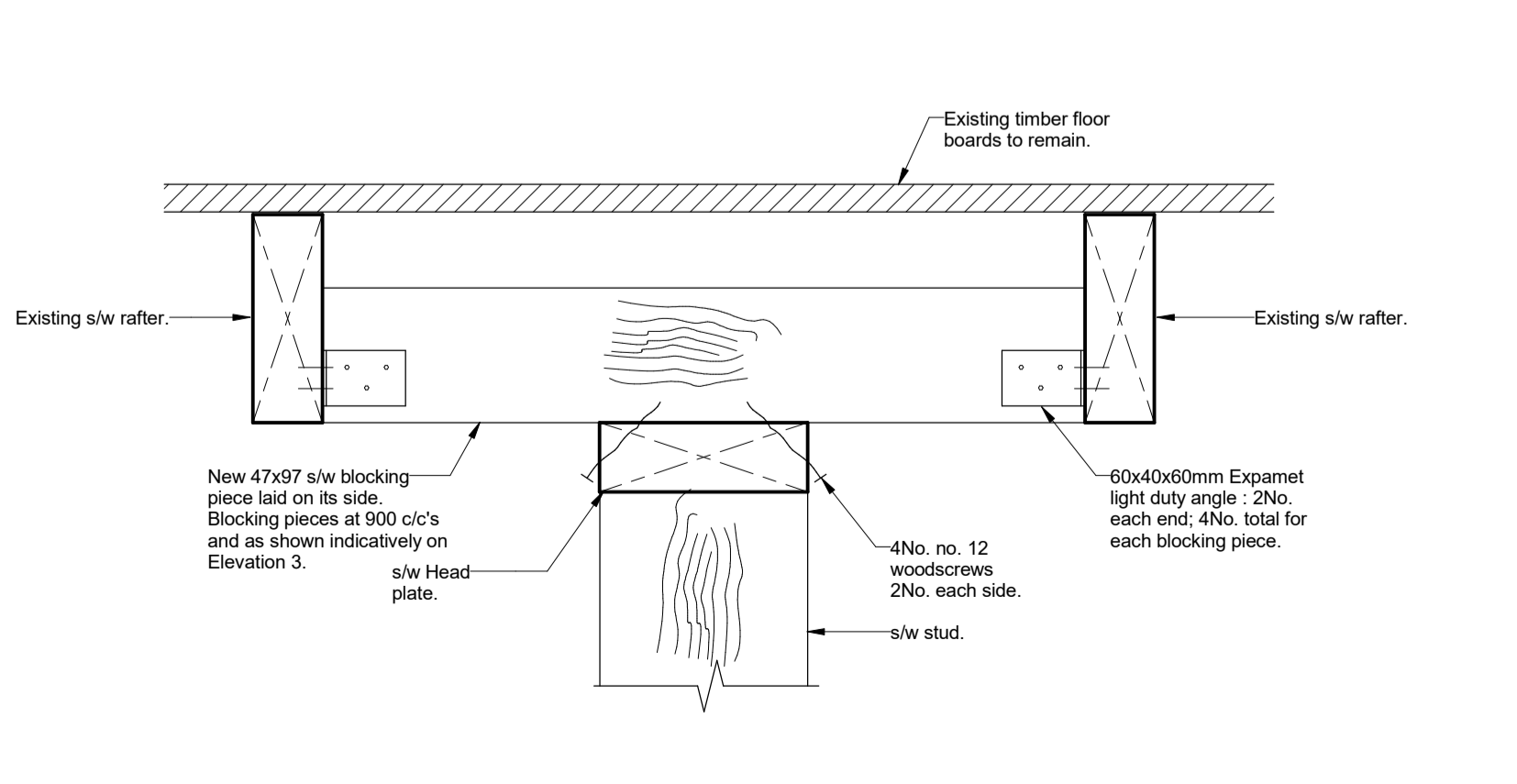
**Detail 7: Joist support detail**  
scale 1 : 5



**Detail 8: Steel Beam Support Detail On New Timber Stud.**  
scale 1 : 5



**Section 9-9**  
scale 1 : 5



**Detail 10: New Stud Wall to Existing Roof Junction**  
scale 1 : 5

**General Notes**  
1. Drawings shall be referred to for structural work only unless otherwise stated and read in conjunction with Architects, Service Engineer's and Sub-Contractor's drawings.  
2. The Contractor shall check all levels and dimensions, any errors or omissions are to be reported at once to the Engineer.  
3. For General Notes refer to no. 9100-DRG-99YY-GN002.

27.07.16	First Issue	DA	TP
REV	DATE	DESCRIPTION	BY

**FOR TENDER**



TITLE:  
**Generic Details for New and Existing Structural Timber Stud Walls**  
PROJECT:  
**Project No:11581  
Kidderpore Avenue**  
SCALE: A1@ As Shown DATE: July16 DRAWN: DA CHKD: TP  
DRG NO. 9100-DRG-00YY-DE010 REV. -

