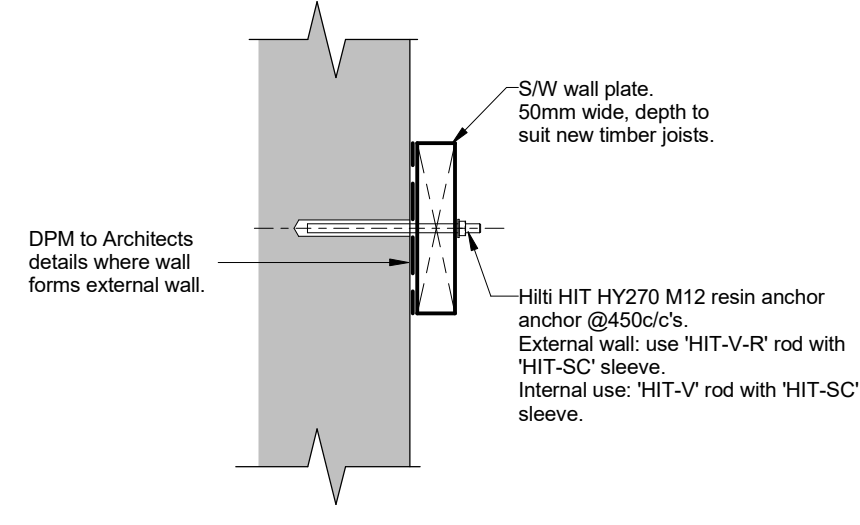
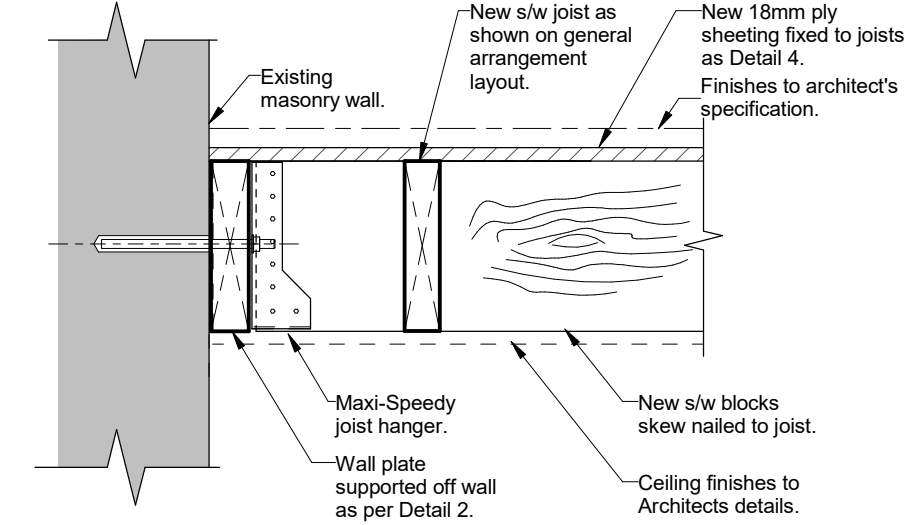


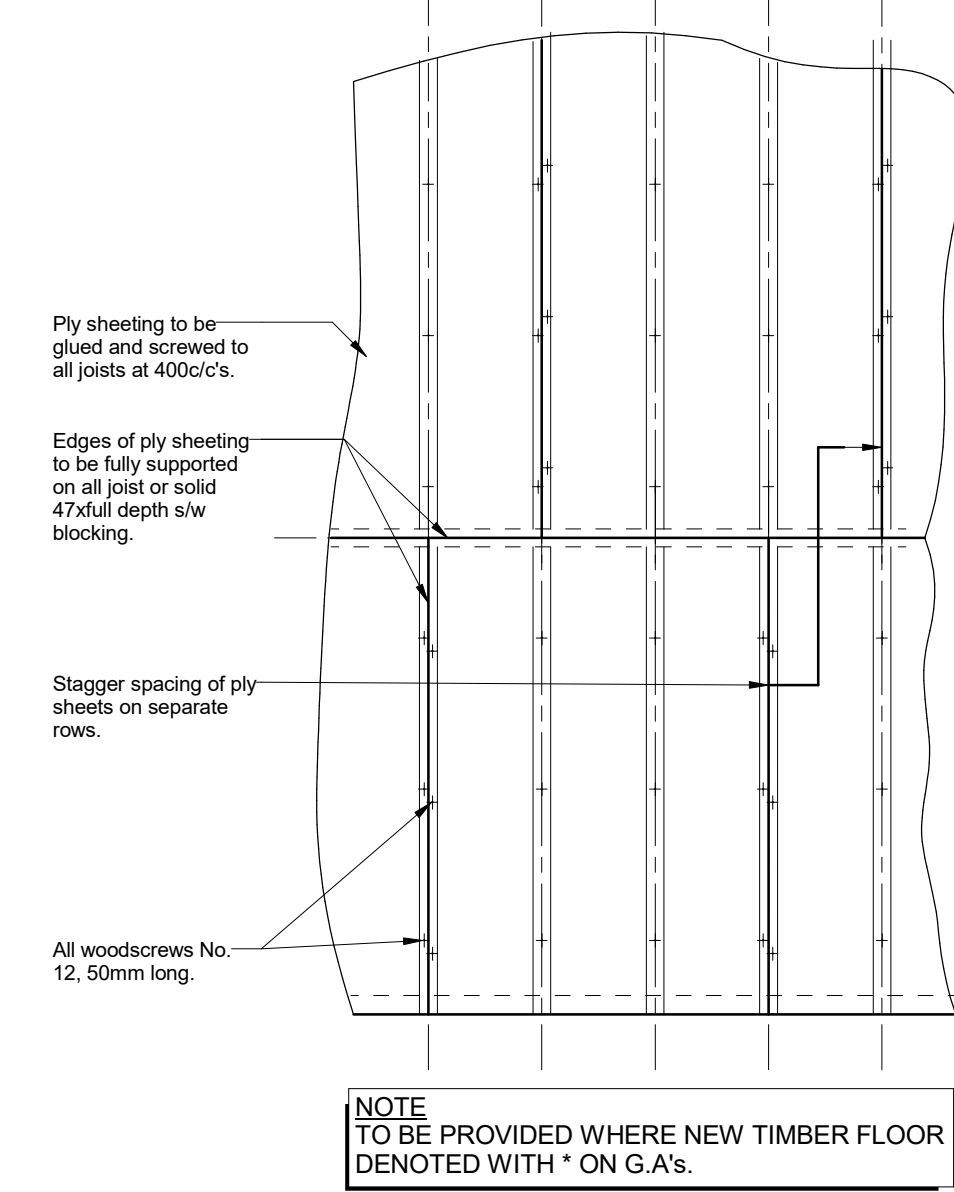
**Detail 1: Support Of New Timber Floor Off Existing Masonry Wall-Option 1.**  
scale 1 : 10



**Detail 2: New Timber Wall Plate Connection To Existing Masonry Wall**  
scale 1 : 10

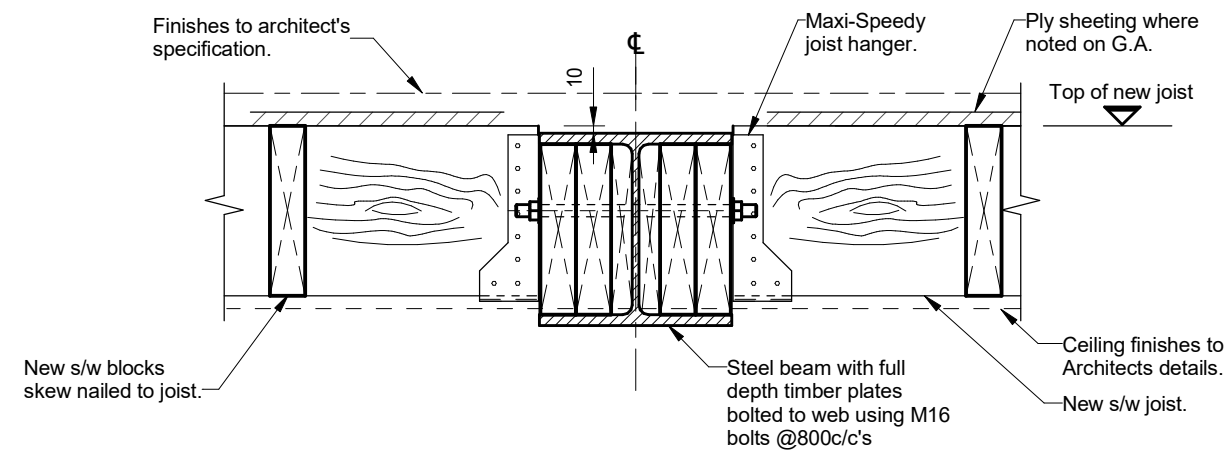


**Detail 3: Support Of New Timber Floor off Existing Wall-Option 2**  
scale 1 : 10

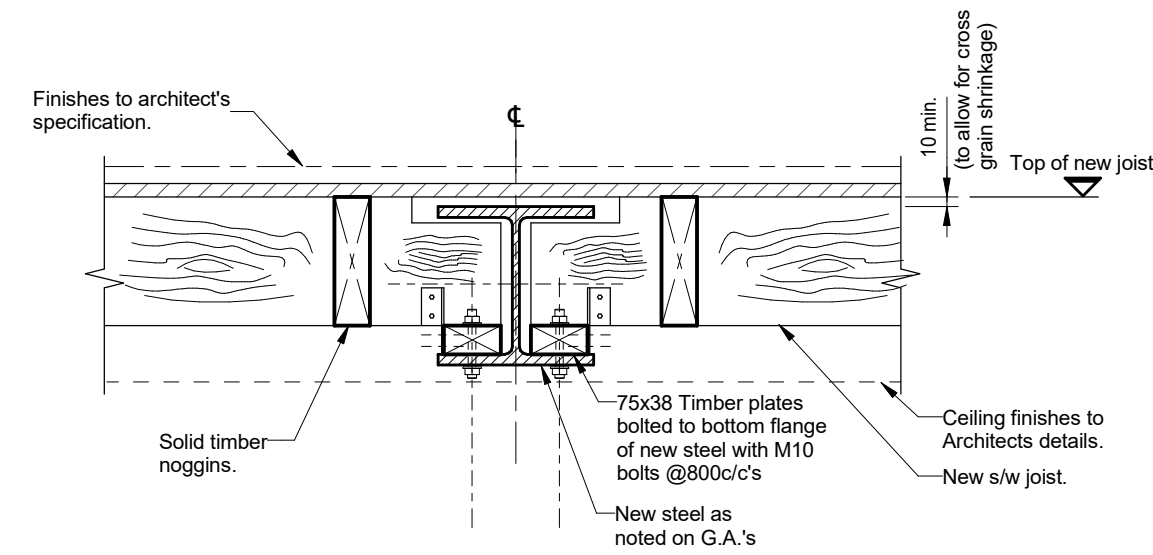


**Detail 4: Ply sheeting fixing for diaphragm action**  
scale 1 : 20

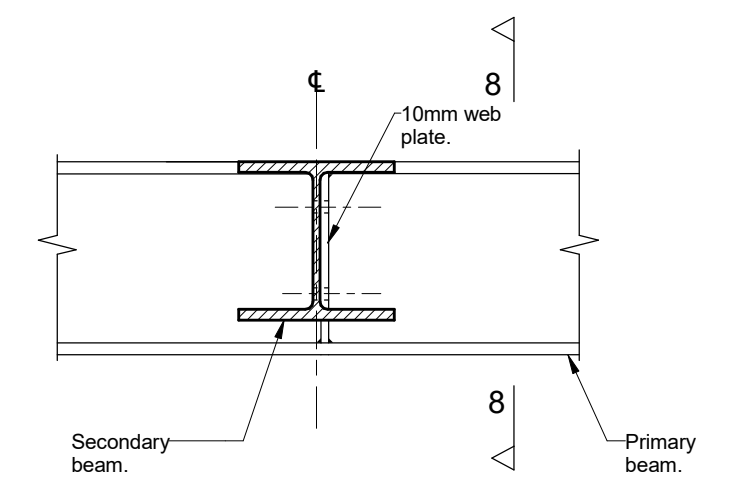
**NOTE**  
TO BE PROVIDED WHERE NEW TIMBER FLOOR DENOTED WITH \* ON G.A.'S.



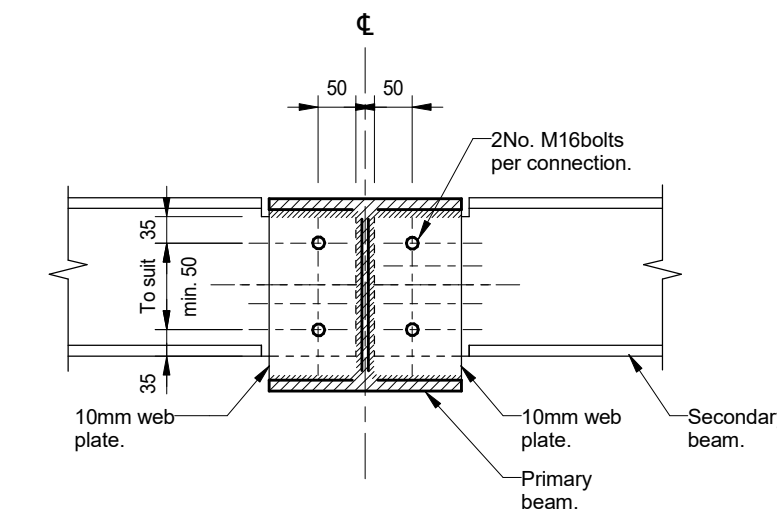
**Detail 5: New Timber Floor Supported Off Steel Beam-Option 1**  
scale 1 : 10



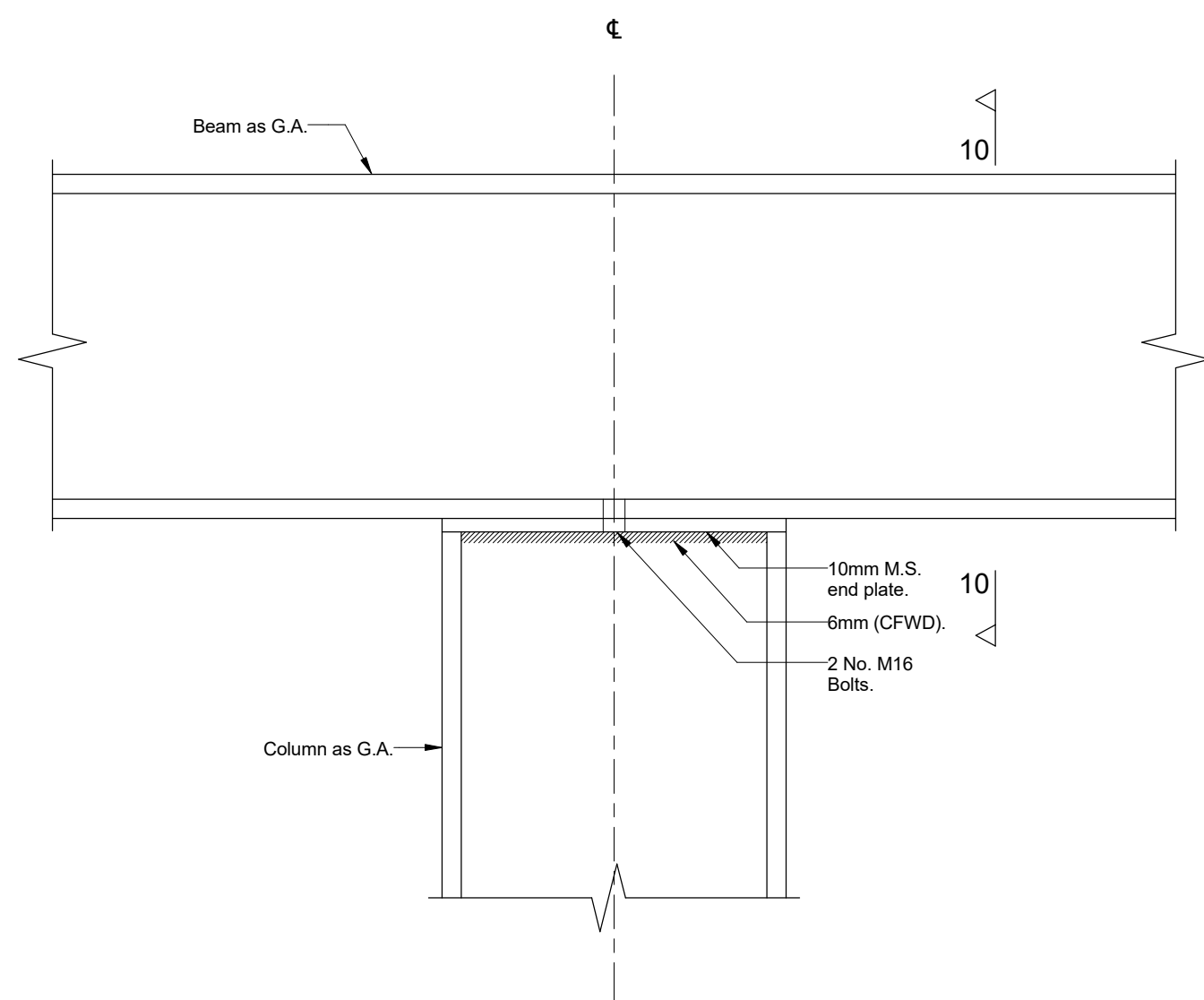
**Detail 6: New Timber Floor Supported Off Steel Beam-Option 2**  
scale 1 : 10



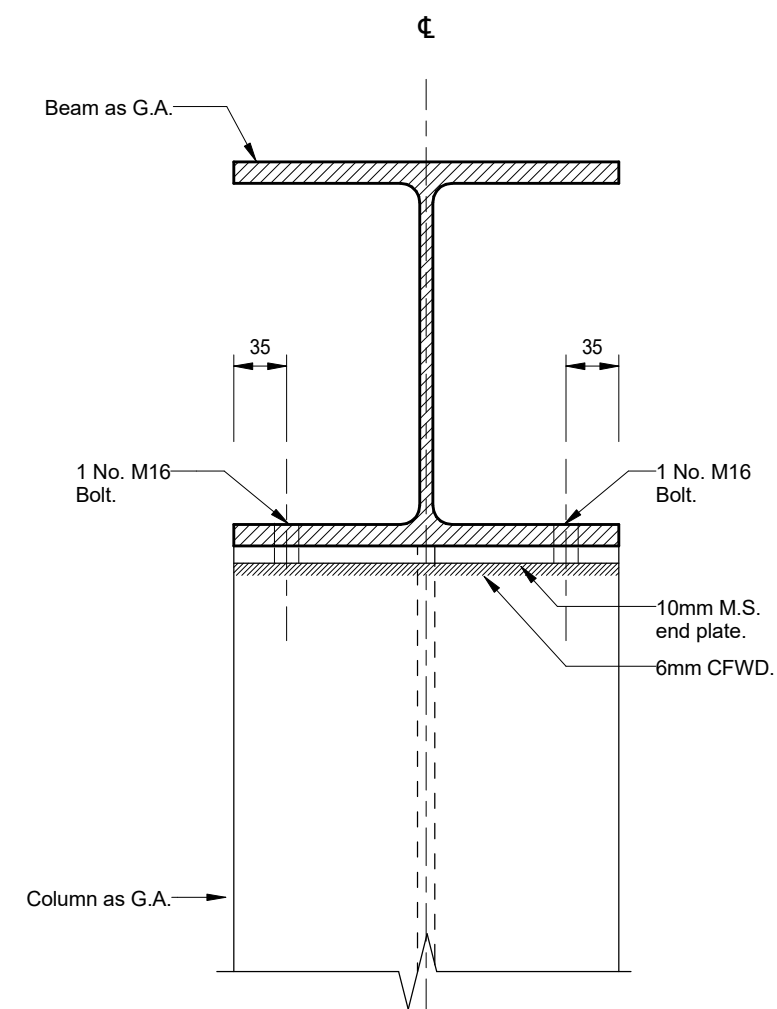
**Detail 7: Typical Primary and Secondary Beam Connection**  
scale 1 : 10



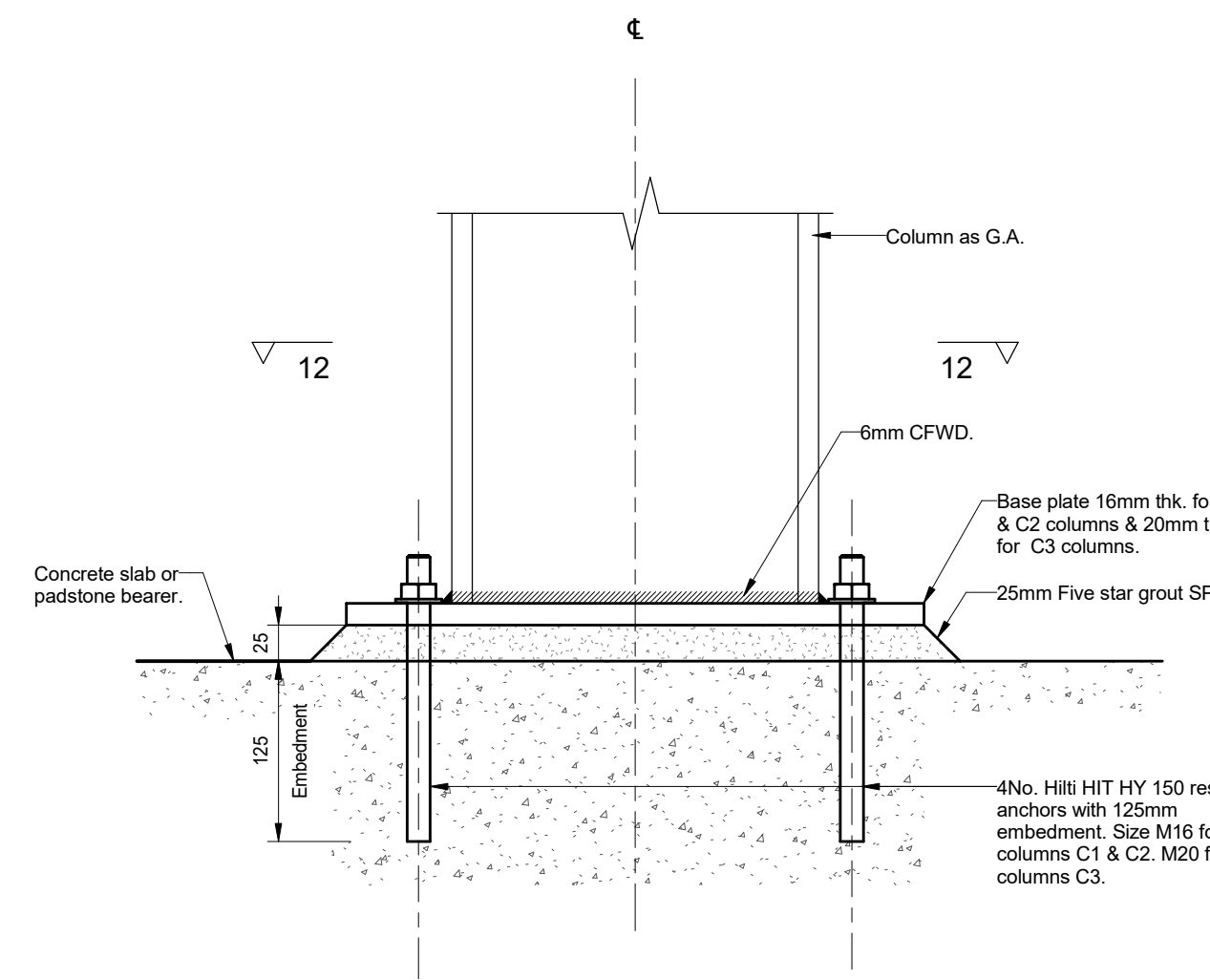
**Section 8-8**  
scale 1 : 10



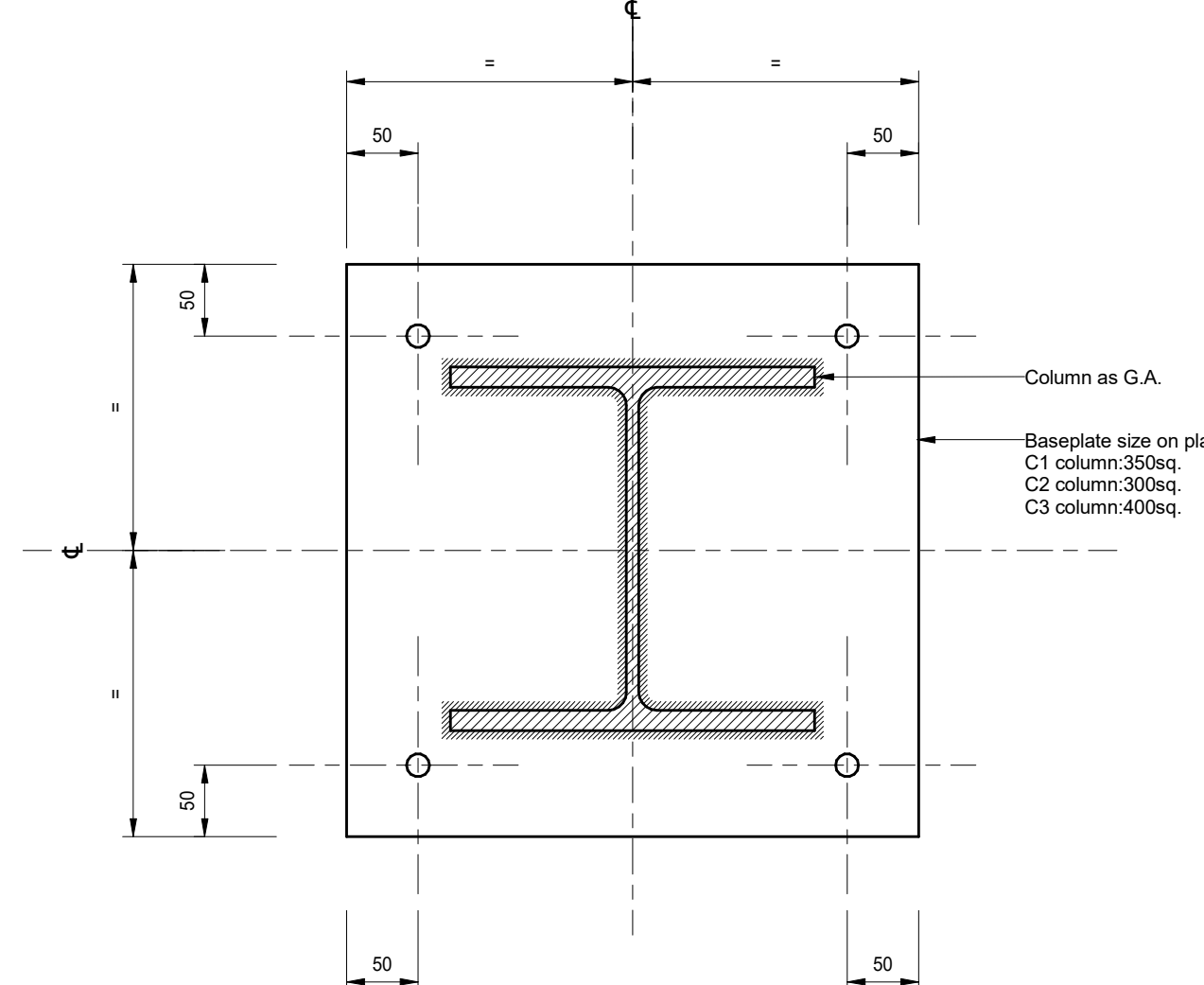
**Detail 9: Column to beam connection**  
scale 1 : 5



**Section 10-10**  
scale 1 : 5



**Detail 11: Column baseplate detail.**  
scale 1 : 5



**Section 12-12**  
scale 1 : 5

- General Notes**
1. Drawings shall be referred to for structural work only unless otherwise stated and read in conjunction with Architects, Service Engineer's and Sub-Contractor's drawings.
  2. The Contractor shall check all levels and dimensions, any errors or omissions are to be reported at once to the Engineer.
  3. For General Notes refer to no. 9100-DRG-99YY-GN002.

REV	DATE	DESCRIPTION	BY	CHKD
1	27.07.16	First Issue	DA	TP

**FOR TENDER**



TITLE:  
**Generic Details for New Timber Floors and Steelwork**

PROJECT:  
**Project No:11581  
Kidderpore Avenue**

SCALE: A1@ As Shown DATE: July16 DRAWN: DA CHKD: TP

DRG NO. 9100-DRG-00YY-DE009 REV. -

**Tully De'Ath**  
consultants

Engineering at its Best

T: 01342 828 000  
E: info@tullydeath.com  
W: www.tullydeath.com