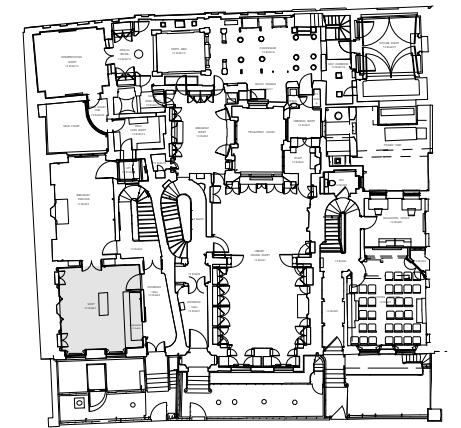


GENERAL NOTES: -

- Drawing to be read in conjunction with drawing no. 506CP1/16/DD002, which illustrates detail at A-A.



GROUND FLOOR KEY PLAN

WEST WALL

NOTES: -

- ① Contractor to supply and install 1 no. picture rail including steel angle, approx. 50 x 25mm deep with a supporting cleat on back surface and 70 x 5mm mirror polished stainless steel covering plate to base.
- ② Contractor to assume that the steel angle will be fixed to the existing masonry wall at 4 no. positions, with stainless steel M10 resin anchor bolt. (NB Existing plaster around these fittings to be made good and decorations touched in).

DRAWING REVISIONS: -
Rev. A: Aug. 2016: Side cabinets added (for clarity).

SIR JOHN SOANE'S MUSEUM
CAPITAL PROJECT

SHOP 12RmG/1 DRWG 506CP1/16/DD001A

WEST WALL SCALE 1:20 @ A3

AS PROPOSED DATE JULY 2016

JULIANHARRAP
ARCHITECTS LLP

95 KINGSLAND ROAD LONDON E2 8AG
PHONE 020 7729 5111 www.julianharraparchitects.co.uk