



CAMDEN

191-192 Camden High Street, London, NW1 7BT

TECHNICAL DETAIL

APPROVED APPROVED with comments NOT APPROVED




COMMENTS

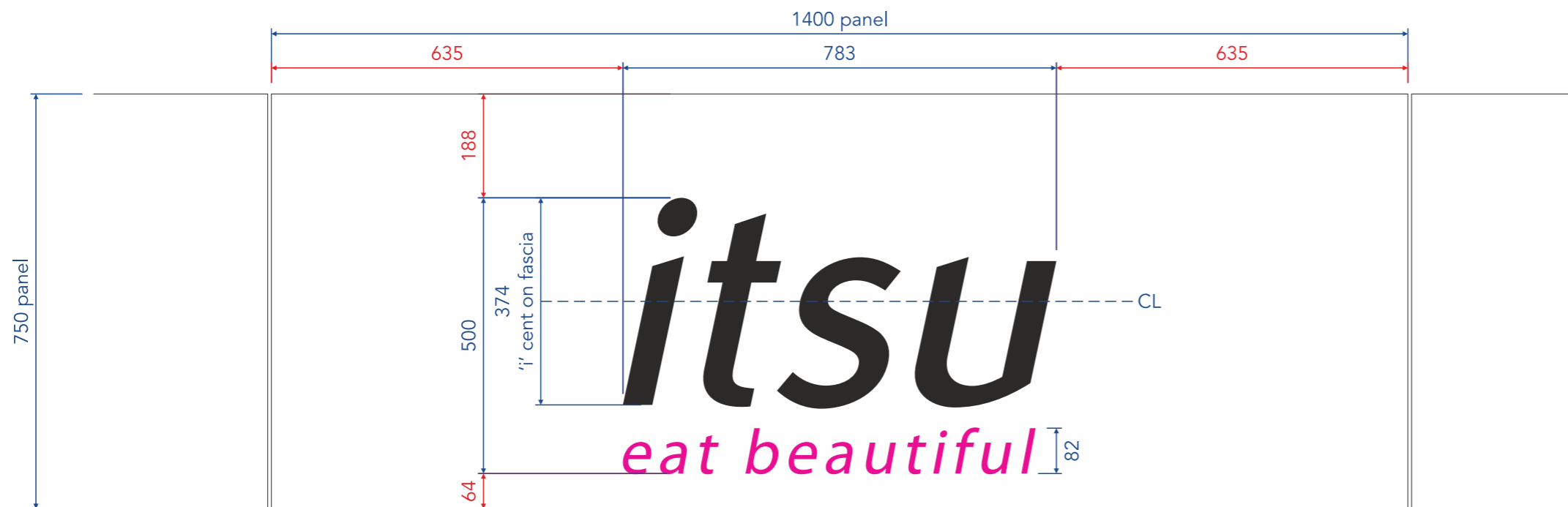
NAME

DATE

REV **DESIGNER** M. Croft (DM)

1 -

	Black: CMYK 0/0/0/100 Other: RAL 9005 Jet Black (satin)
	Magenta: PMS Rhodamine Red C Other: Perspex Red 4415
	White: CMYK 0/0/0/0 Other: RAL 9016 Traffic White (satin)



ITEM 1 Built-up Halo Letters
Scale 1:10

ITEM 1 Built-up Halo Letters

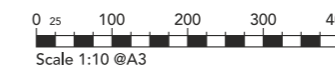
'itsu' fabricated from 1mm thick aluminium face and 80mm deep returns finished Black. Letter backs to be from 5mm Opal 030 acrylic to allow for halo illumination and reduce spotting reflection. Letters mounted to glass fascia via M5 RAWLnuts through Ø10mm holes.

'eat beautiful' fret cut from 3mm thick Red 4415 Perspex and bonded to glass panel via double sided VHB tape.

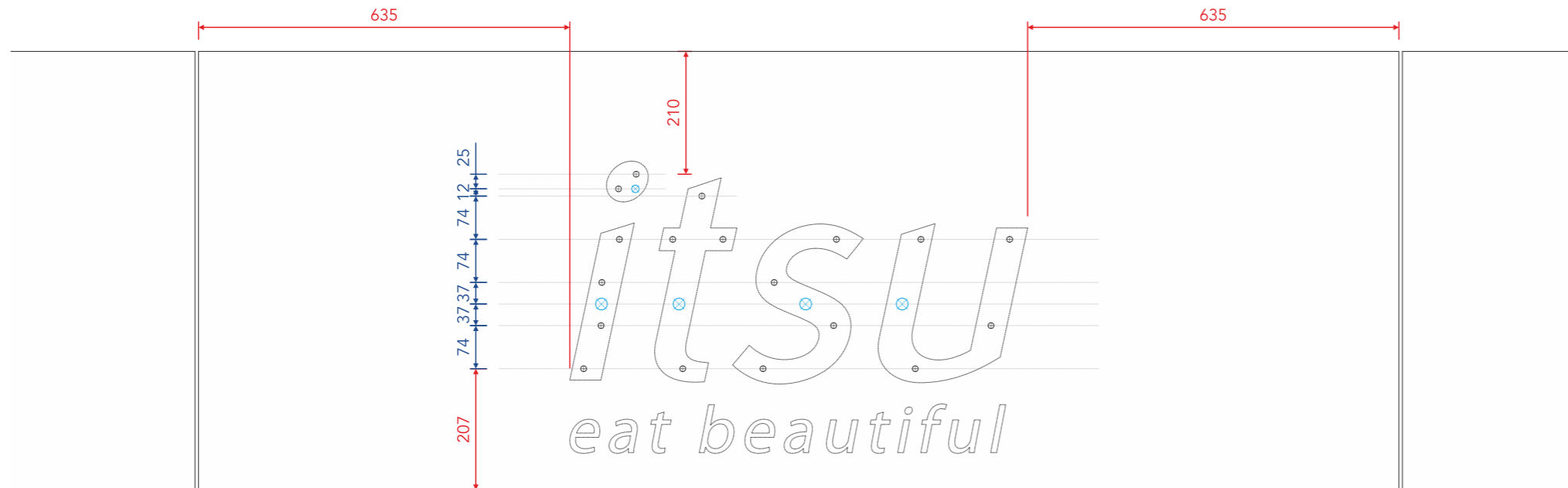
Internally illuminated by White LEDs to halo illuminate 'itsu' only, 'eat beautiful' is non-illuminated.

Qty 1no.

STATUS (X) Issue - (!) Take Note - (✓) Passed
> (✓) READY FOR MANUFACTURE.



REV **DESIGNER** M. Croft (DM)



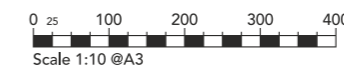
ITEM 2 Glass Fascia Panel - Fixing Hole Layout
Scale 1:10

ITEM 2 Glass Fascia Panel
6mm low-iron toughened glass back sprayed opaque White to match RAL 9016 Traffic White.

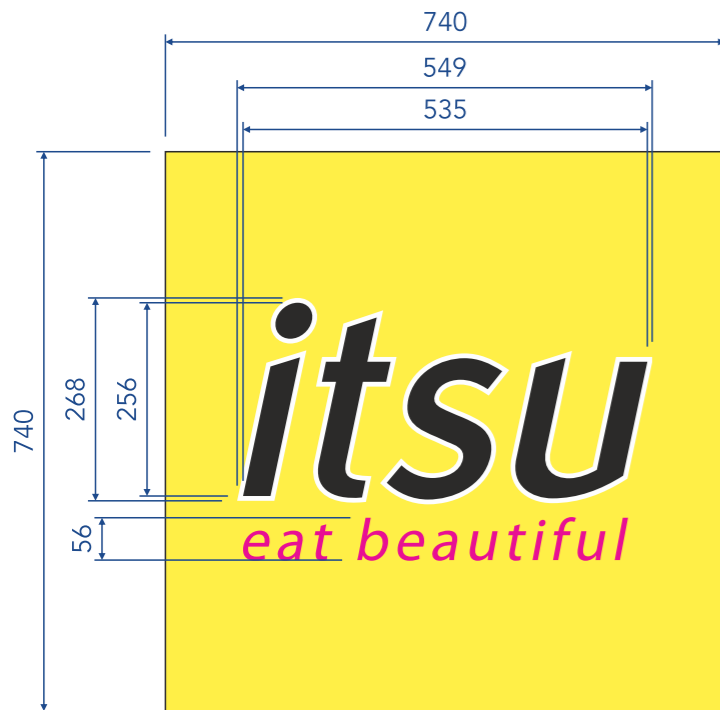
- Ø10mm fixing holes.
- Ø20mm cable holes.

Non-illuminated.
Qty 1no.

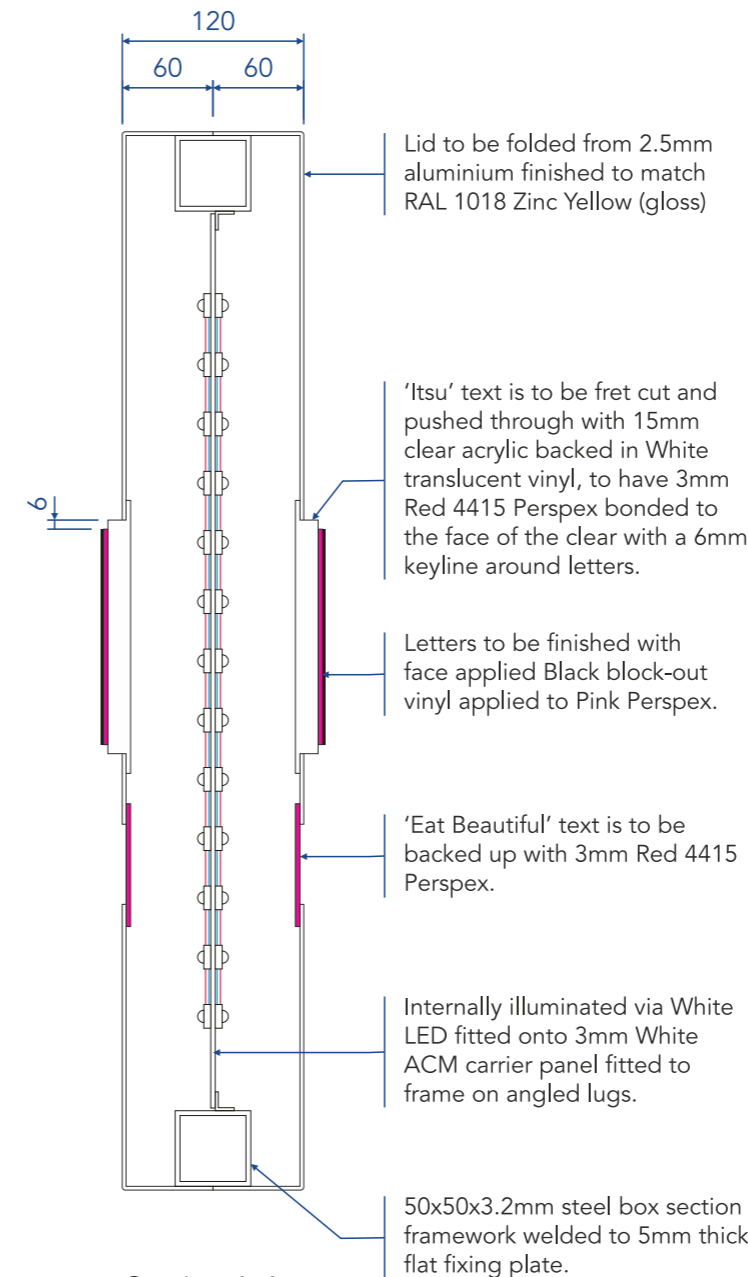
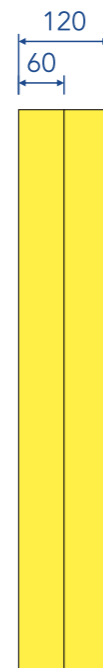
STATUS (x) Issue - (!) Take Note - (✓) Passed
(✓) MANUFACTURED by others.



REV **DESIGNER** M. Croft (DM)



ITEM 3 Projecting Sign
Scale 1:10



Section A-A
Scale 1:5



	Black: CMYK 0/0/0/100 Other: Black block out vinyl
	Magenta: PMS Rhodamine Red C Other: Perspex Red 4415
	Yellow: PMS 108c Other: RAL 1018 Zinc Yellow (gloss)
	White: CMYK 0/0/0/0 Other: Translucent White Vinyl

ITEM 3 Projecting Sign

To be constructed as 2no. fret cut 60mm deep lids fitted back to back onto a 50x50x3mm box section frame and 5mm thick fixing plate. Total sign depth to be 120mm, panels to be finished to match RAL 1018 Zinc Yellow (gloss).

'itsu' text to be pushed through with 15mm clear acrylic top-hat backed in White vinyl, to have 3mm thk Red 4415 Perspex bonded onto the face to leave a 6mm White keyline around letters, to be finished with face applied Black block-out vinyl applied to Pink Perspex. 'Eat Beautiful' text is to be backed up with 3mm Red 4415 Perspex.

To be internally illuminated via White LED fitted onto 3mm White ACM carrier panel which is to be fixed onto internal frame using angled lugs, to illuminated Text only.

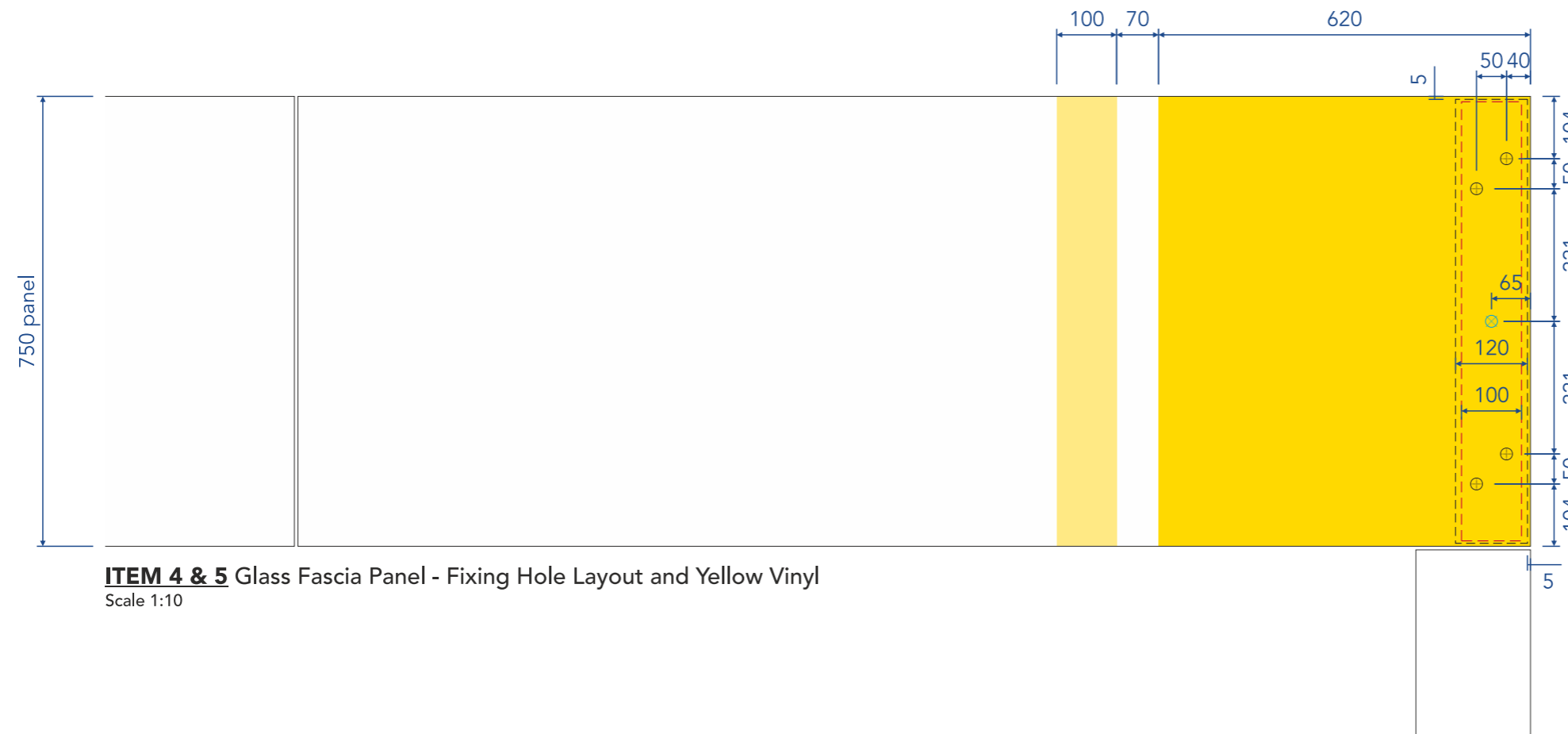
Qty 1no.

STATUS (X) Issue - (!) Take Note - (✓) Passed

- › (!) To be fitted through glass into fixing grounds.
- › (✓) READY FOR MANUFACTURE.

REV **DESIGNER** M. Croft (DM)

	Yellow: PMS 108c Other: Digitally printed Yellow vinyl (gloss)
	Pale Yellow: PMS 108c (56%) Other: Digitally printed Yellow vinyl (gloss)
	White: CMYK 0/0/0/0 Other: RAL 9016 Traffic White (satin)



ITEM 4 & 5 Glass Fascia Panel - Fixing Hole Layout and Yellow Vinyl
Scale 1:10

ITEM 4 Glass Fascia Panel
6mm low-iron toughened glass back sprayed opaque White to match RAL 9016 Traffic White.

- Ø20mm fixing holes.
- Ø20mm cable holes.

Non-illuminated.

Qty 1no.

ITEM 5 Yellow Vinyl Detail
Face applied digitally printed vinyl to match Yellow and Pale Yellow as detailed with gloss laminate.

Qty 1no.

STATUS (x) Issue - (!) Take Note - (✓) Passed
 ✓ **ITEM 4** MANUFACTURED by others.
 ✓ **ITEM 5** READY MANUFACTURED.