

Hawkins\
Brown

to studio



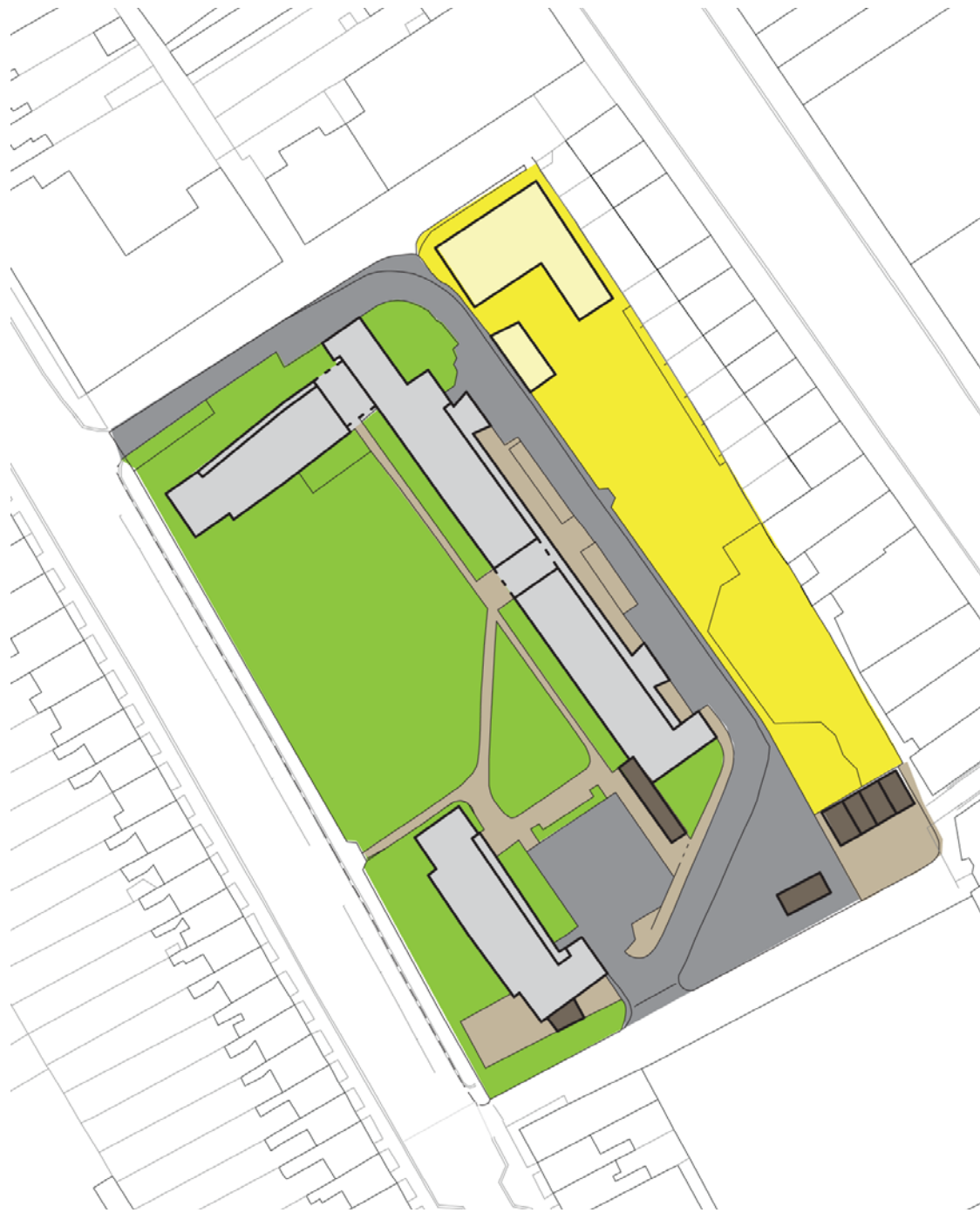
Play, Adventure & Community Enrichment

Camden Housing Three Fields

Sketchbook 08- Play Centre Consultation

January 25 2016

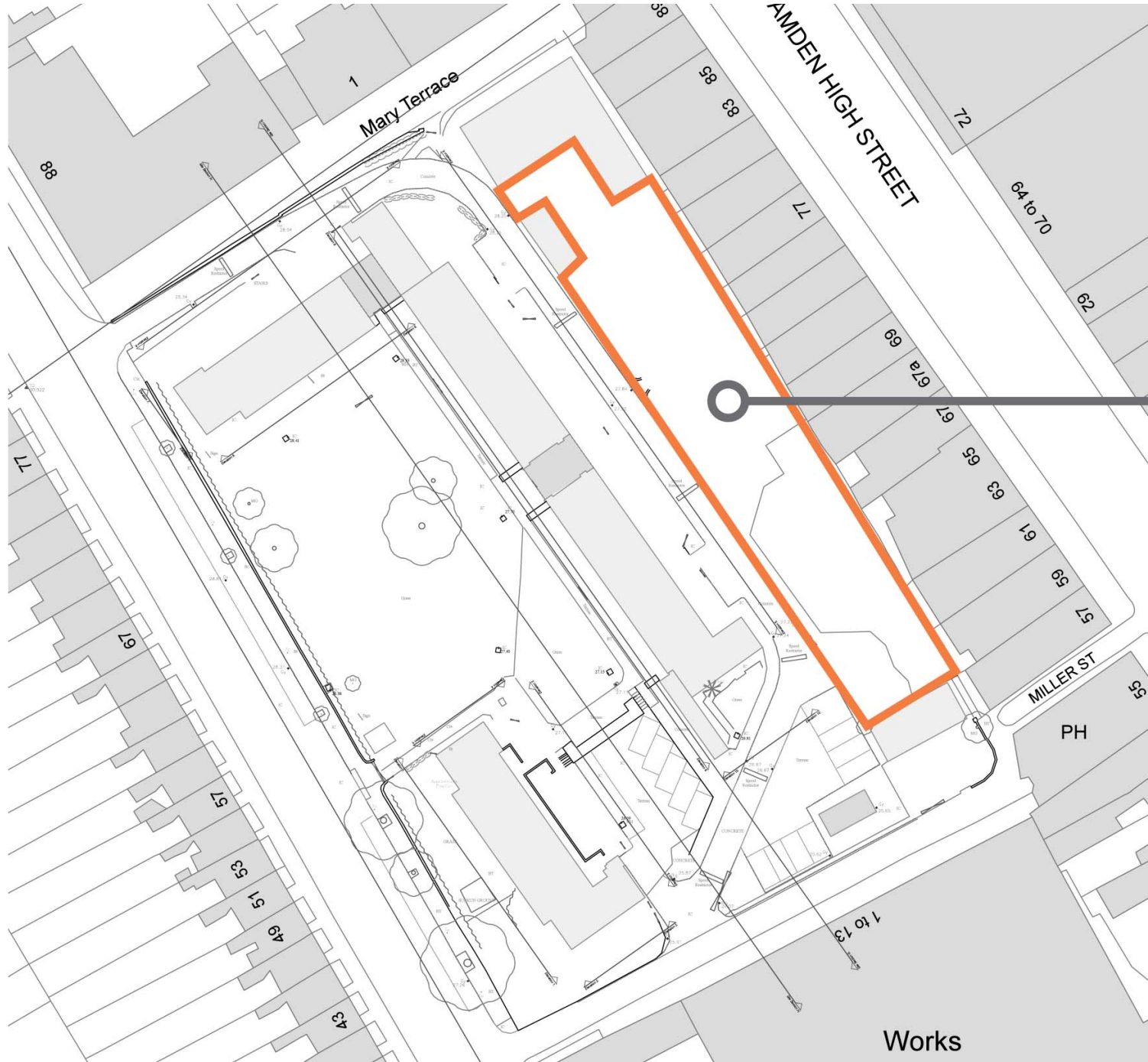
Threefields - Existing Areas



- Roads and Parking
1388m²
- Paths and Paving
516m²
- Ancillary Buildings
117m²
- Residential Buildings
1132m²
- Nursery Buildings
239m²
- Nursery Play Space
1083m²
- Open Green Space
2451m²
- Private Green Space
0m²

Three Fields
Existing Areas

Play Centre - Existing External Play Provision



1083 m²

Play Centre
Existing
External Play Provision

Threefields - Existing Equipment



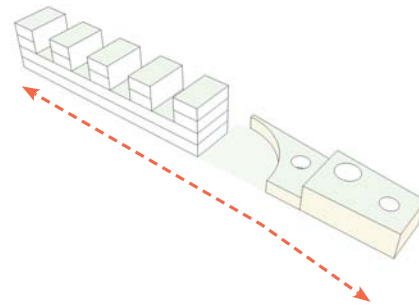
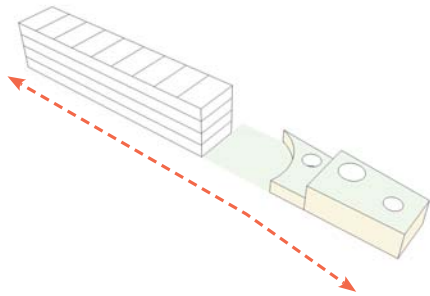
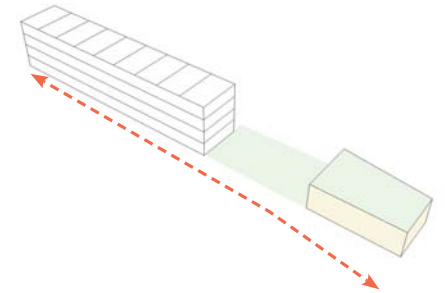
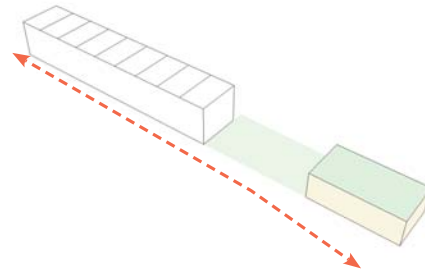
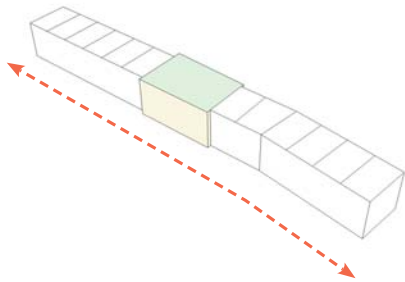
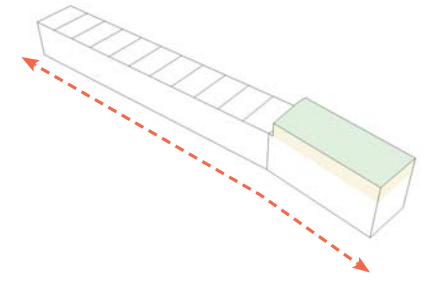
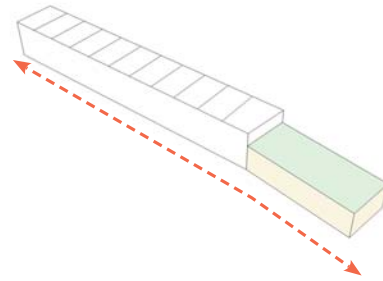
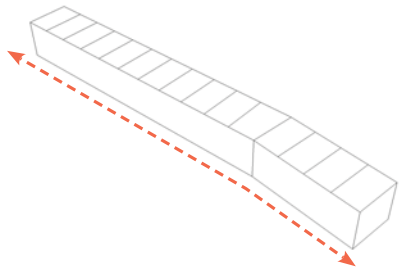
Play Centre
Existing Equipment

Play Centre - Existing Equipment

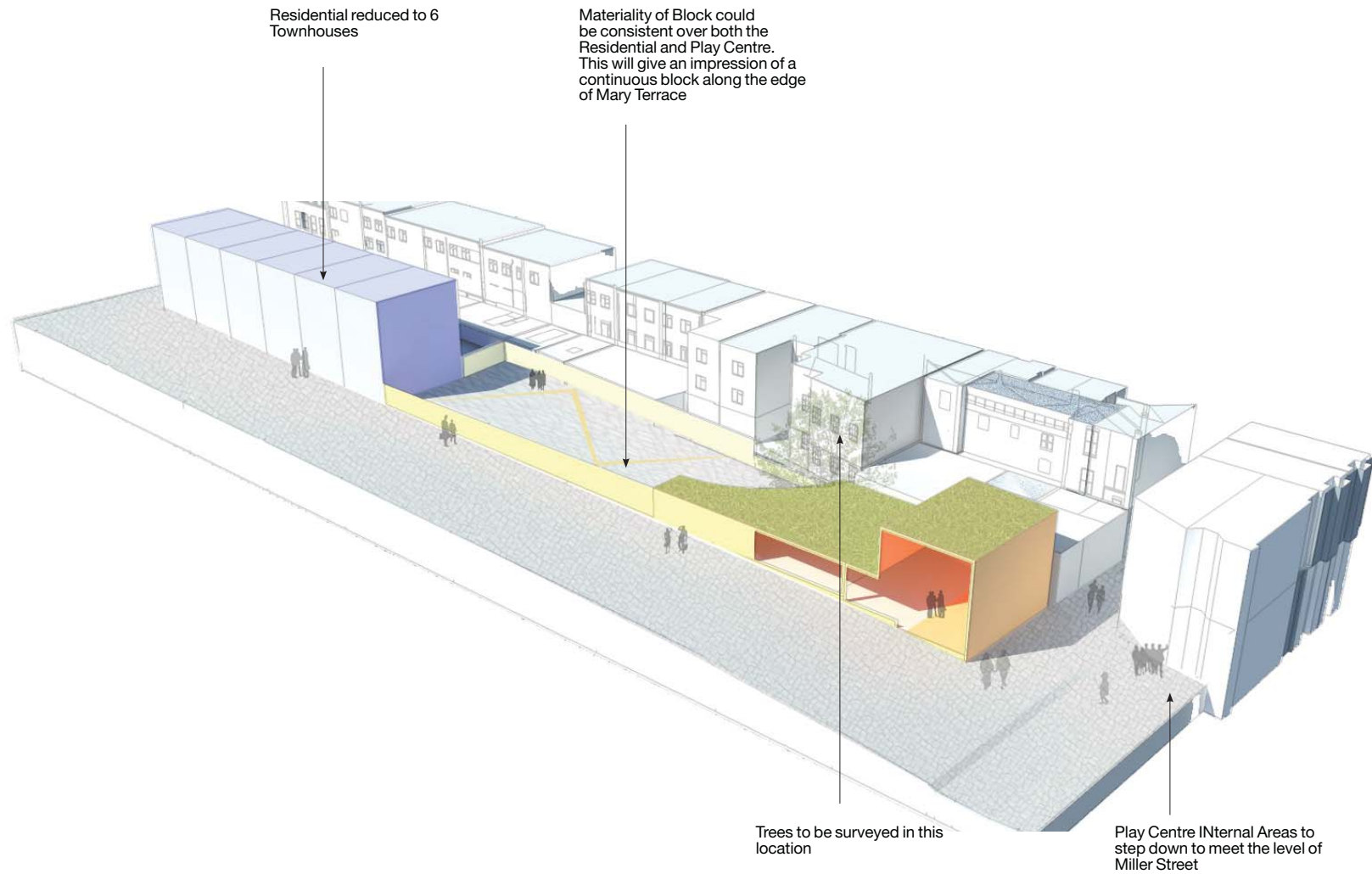


Play Centre
Existing Equipment

Play Centre- Approach to Mary Terrace



Play Centre - Approach to Mary Terrace



Play Centre- Previous Brief Requirements

Fairfield Redevelopment Requirements

About PACE:

PACE is a user-led, grass-roots charity founded in 2011 by a group of parents of disabled children and play work professionals in Camden.

We aim to: create responsive local services that improve the health and happiness of children and their families; re-invent and improve the environment and practice of play work; develop relationships between parents/professionals and improve the way children, young people and adults perceive difference.

We enjoy strong links within the local community and employ a highly experienced, expert staff team.

PACE deliver a range of services including:

- Out of School Childcare & Play Provision for children aged 4-12 years
- A preschool service for children aged 2-4 years
- Overnight "Short Breaks" for children aged 8-14 years
- A daytime mentoring service for children excluded from school or at risk of exclusion
- A pilot after school and holiday programme for vulnerable children with social, emotional and behavioural issues.
- An additional service in the pipeline involves inclusive weekend activities involving natural play, arts and off-site trips

The Fairfield preschool service offers a half-day nursery with 36 places per day, however we would like to increase the number of places we offer (see appendix 1)

Indoor Requirements

Specific legal space requirements are:

- Children under 2 years - 3.5 m² per child ✓
- 2 ~~2~~ years old - 2.5 m² per child ✓ *2 years 3.5 m².*
- Children aged 3-5 years - 2.3 m² per child ✓
- Calculations of available indoor space should be based on the net or useable areas of the rooms by the children (this does not including storage areas, thoroughfares, dedicated staff areas, cloakrooms, utility rooms, kitchens or toilets).
- 1 toilet and 1 hand basin for every 10 children over the age of two.

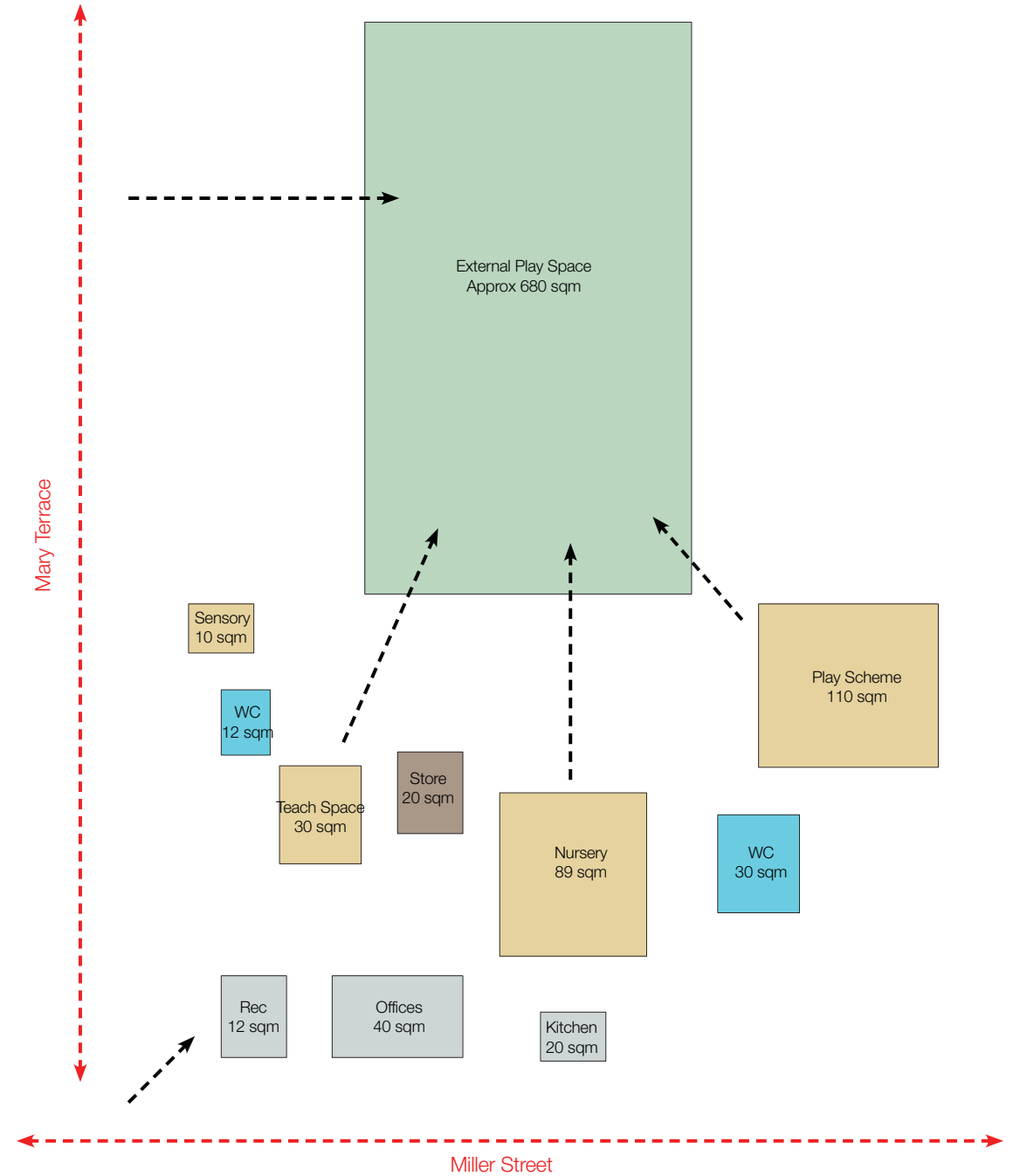
*EYF's framework 01/09/14.
premises (p27).*

age 5+ over 1 WC for every 20 children.

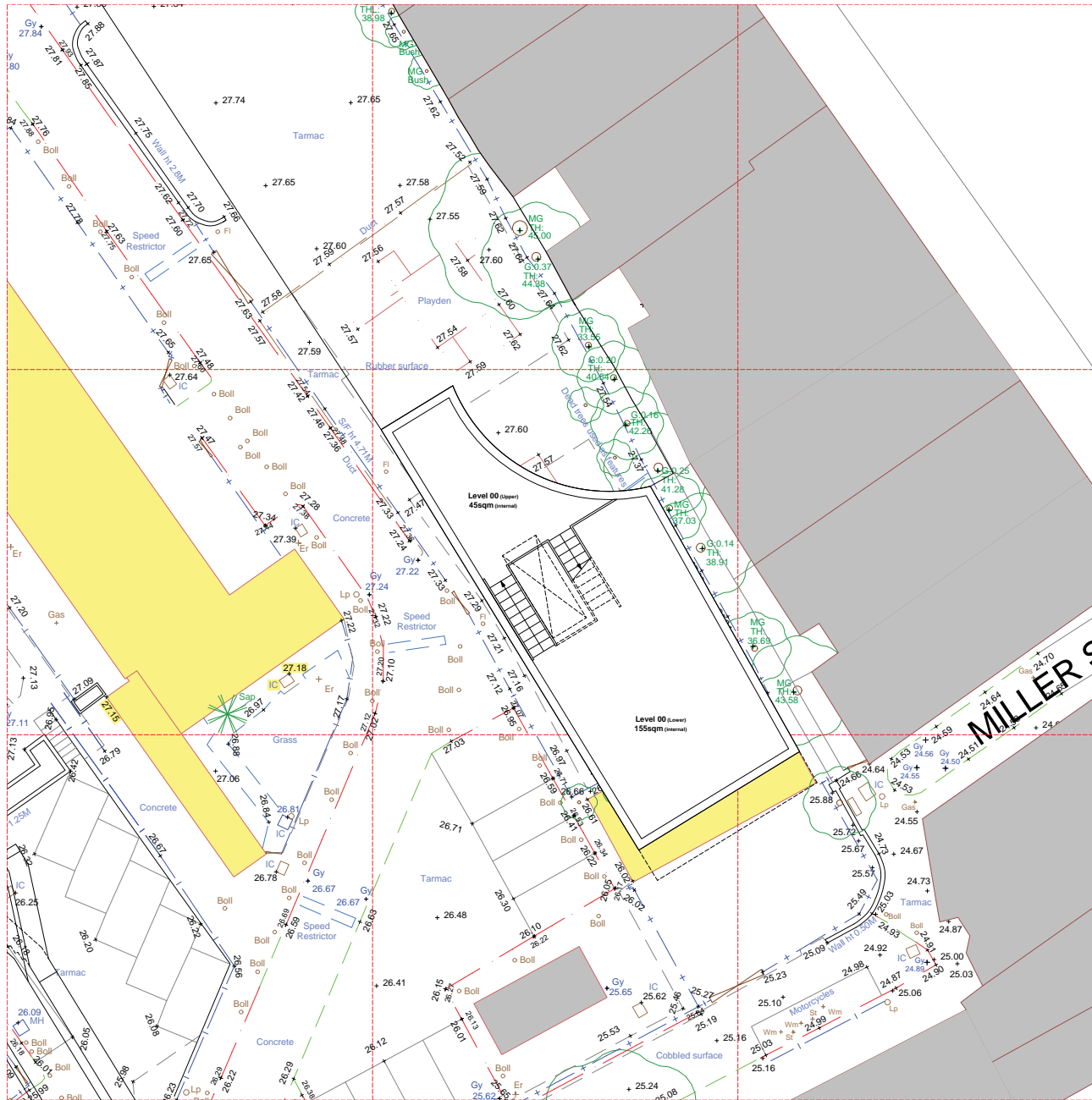
Dedicated space for full-day nursery places:

- 6 spaces for children aged 0-2 years (21 m²)
- 16 spaces for 2 year olds (40 m²)
- 12 spaces for 3 & 4 year olds (28 m²)
- Total space required (89 m²)
- 3 toilets and hand basins (approx. 12 m²)

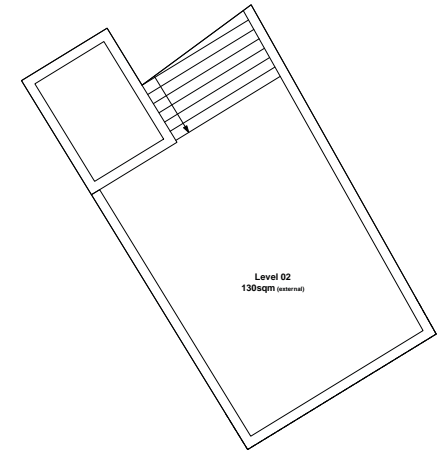
Play Centre - Previous Brief Requirements



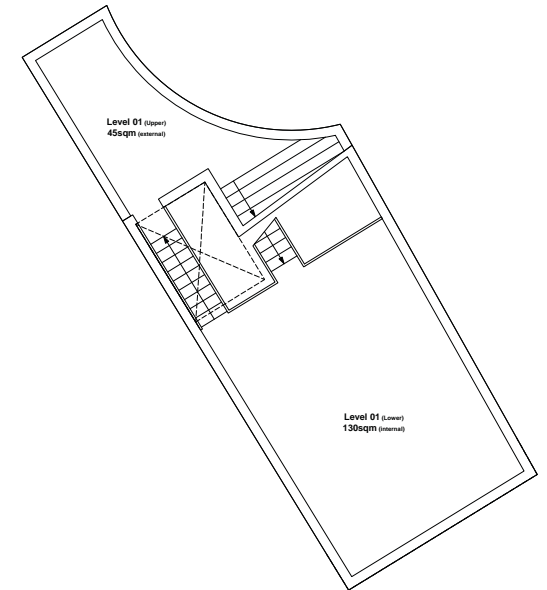
Play Centre- Layout - Areas



Play Centre Level 00
1:100

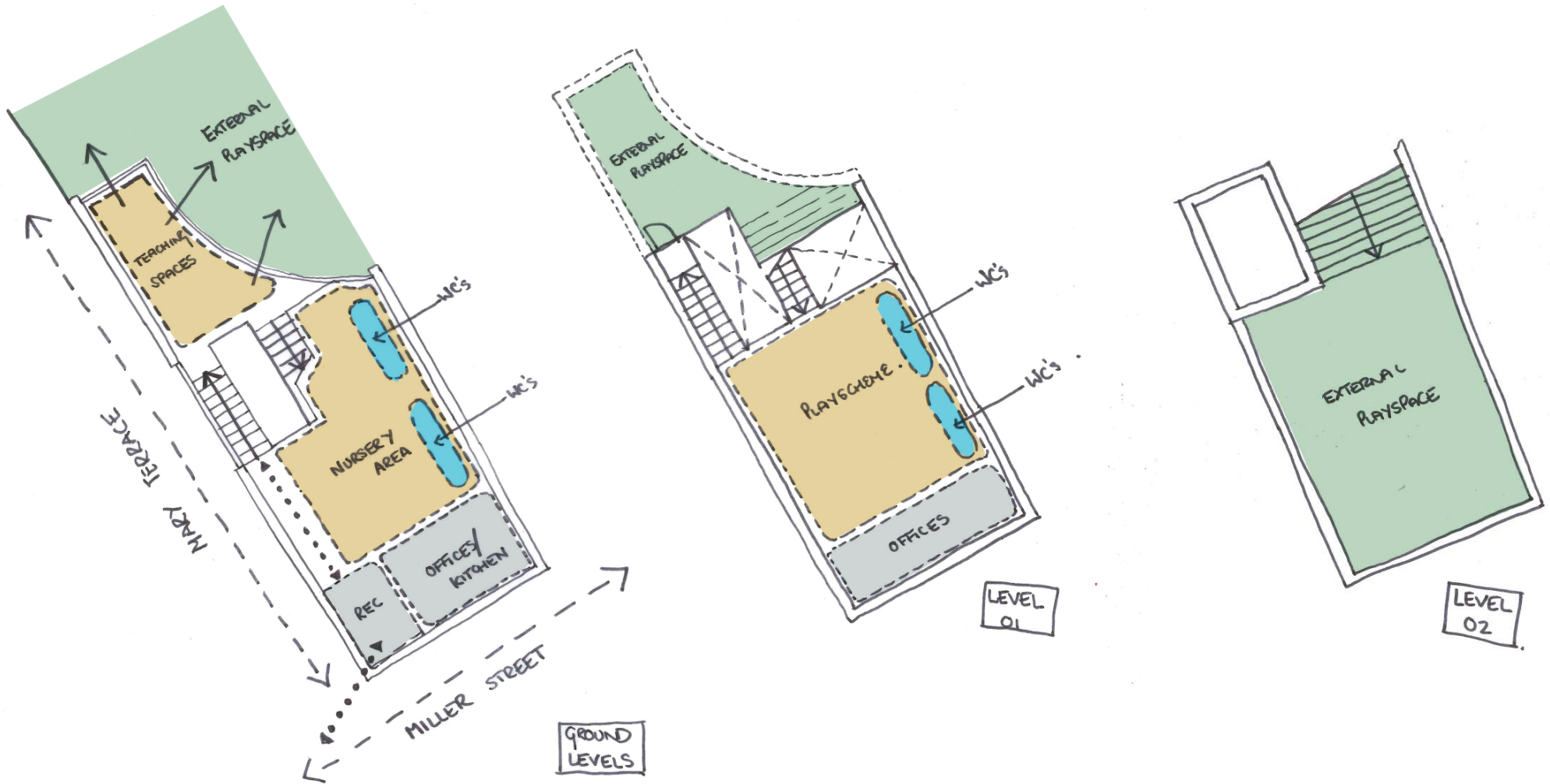


Play Centre Level 02
1:100

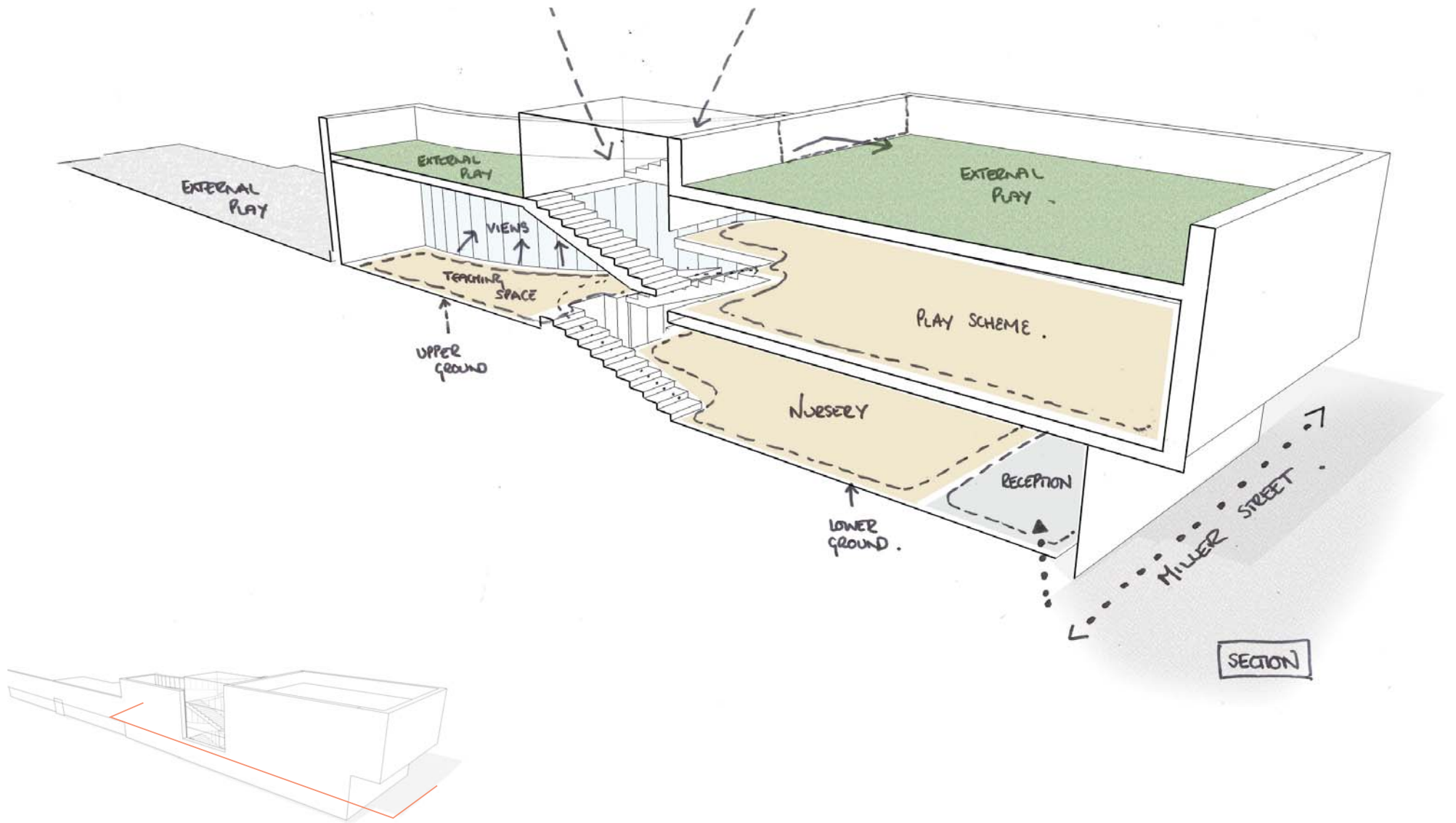


Play Centre Level 01
1:100

Play Centre - Layout - Adjacency Option



Play Centre- Layout - Section



Play Centre - Opportunities and Further Development

- Improved Adjacencies
- Separation of Teaching Spaces
- Variety of Teaching Spaces
- Improved Internal Environment
- Improved External Playspaces
- Improved Street Presence