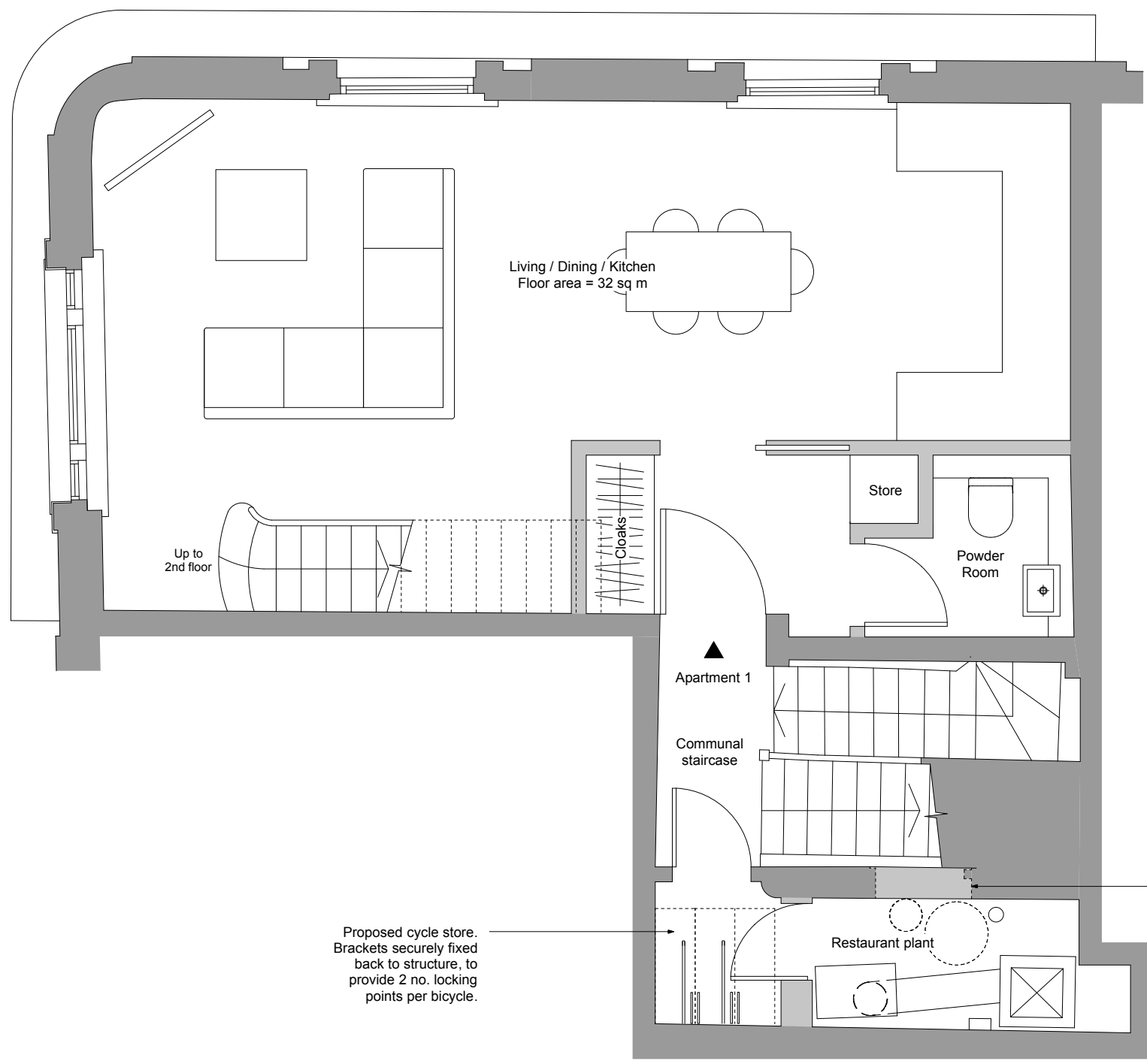


- Existing Fabric
- Proposed Fabric



Living / Dining / Kitchen  
Floor area = 32 sq m

Up to  
2nd floor

Apartment 1

Communal  
staircase

Store

Powder  
Room

Restaurant plant

Proposed cycle store.  
Brackets securely fixed  
back to structure, to  
provide 2 no. locking  
points per bicycle.

Dashed line indicates location of  
existing window (to be filled in to  
avoid outlook over restaurant  
plant).

Duplex Apartment 1  
First Floor GIA = 40 sq m  
Second Floor GIA = 40 sq m  
Duplex Apartment 1 Total GIA = 80 sq m

P2 19.08.16 Issued For Planning  
rev 1 date 19.08.16 note do not scale drawing copyright © architects ltd

**FOR PLANNING**

**tfa** ARCHITECTS  
250 Kennington Lane  
London SE11 5RD  
t: 020 7091 9800  
f: 020 7091 9830  
office@tfa.co.uk  
www.tfa.co.uk

project  
14 CHARLOTTE ST  
LONDON W1T 2LX

drawing  
PROPOSED PLAN:  
FIRST FLOOR  
DUPLEX APARTMENT 1

date	09.08.16	dep no	210/022
scale	1:50 @ A3	rev	P2